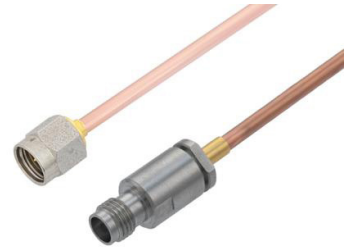


2.92mm Male to 1.85mm Female Cable Using RG405 Semi-Rigid Coax



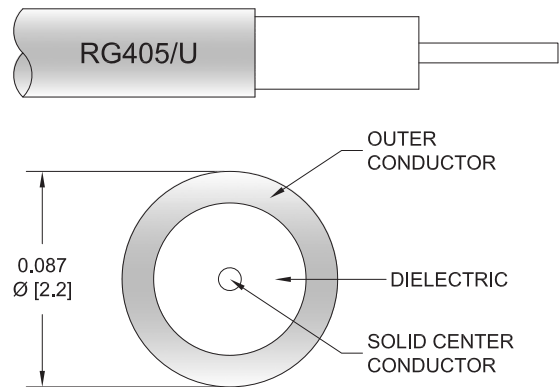
PE3C10446

Configuration

- Connector 1: 2.92mm Male
- Connector 2: 1.85mm Female
- Cable Type: RG405
- Coax Flex Type: Semi-Rigid

Features

- Max Frequency 40 GHz



Applications

- General Purpose
- Laboratory Use

Description

Pasternack's PE3C10446 2.92mm male to 1.85mm female cable using RG405 coax is part of our full line of RF components available for same-day shipping. Pasternack's semi-rigid RF cable assemblies are ideal for high performance applications and can be formed, using proper tooling, to the routing pattern required. This Pasternack 2.92mm to 1.85mm cable assembly has a male to female gender configuration with 50 ohm semi-rigid RG405 coax. The PE3C10446 2.92mm male to 1.85mm female cable assembly operates to 40 GHz.

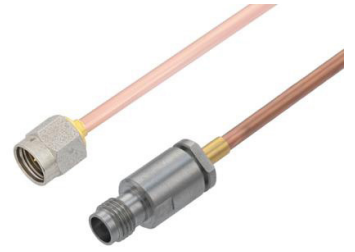
Custom versions of most RF cable assemblies can be built and shipped same day. Custom cable assembly lengths can be obtained by specifying the desired length on the web site at time of order or by contacting a sales representative. Other available RF cable assembly value added services include connector orientation or clocking, heat shrink booting and custom labeling. RF testing can also be performed to document the electrical performance of your cable assembly.

Electrical Specifications

Description	Minimum	Typical	Maximum	Units
Frequency Range	DC		40	GHz
VSWR			1.4:1	
Dielectric Withstanding Voltage (AC)			1,000	Vrms

Specifications by Frequency

2.92mm Male to 1.85mm Female Cable Using RG405 Semi-Rigid Coax



PE3C10446

Part Number	Length	Description	F1	F2	F3	F4	Units	Weight (lbs)
		Frequency	2500	5000	10000	20000	MHz	
PE3C10446	Custom Lengths Available	Insertion Loss (Typ.)	0.316	0.477	0.8	1.2	dB/ft	
			1.04	1.57	2.63	3.94	dB/m	
PE3C10446-6	6 Inch	Insertion Loss (Typ.)	0.36	0.44	0.6	0.8	dB	0.029
PE3C10446-12	12 Inch	Insertion Loss (Typ.)	0.52	0.68	1	1.4	dB	0.035
PE3C10446-18	18 Inch	Insertion Loss (Typ.)	0.68	0.92	1.4	2	dB	0.042
PE3C10446-24	24 Inch	Insertion Loss (Typ.)	0.84	1.16	1.8	2.6	dB	0.049
PE3C10446-36	36 Inch	Insertion Loss (Typ.)	1.15	1.64	2.6	3.8	dB	0.062

The insertion loss data for the base model does not include loss due to the connectors. Each length includes insertion loss due to the connectors.

Loss due to Connector 1:	0.1 dB
Loss due to Connector 2:	0.1 dB
Base Weight:	0.035 pounds
Additional Weight per Inch:	0.00109 pounds

Mechanical Specifications

Cable Assembly

Width/Diameter	0.5 in [12.7 mm]
Weight	0.035 lbs [15.88 g]

Cable

Cable Type	RG405
Impedance	50 Ohms
Inner Conductor Type	Solid
Inner Conductor Material and Plating	Copper Clad Steel, Silver
Dielectric Type	PTFE
Number of Shields	1
Outer Conductor 1 Material and Plating	Copper
Jacket Material	Tan
Repeated Minimum Bend Radius	0.05 in [1.27 mm]

2.92mm Male to 1.85mm Female Cable Using RG405 Semi-Rigid Coax



PE3C10446

Connectors

Description	Connector 1	Connector 2
Type	2.92mm Male	1.85mm Female
Impedance	50 Ohms	50 Ohms
Configuration	Straight	Straight
Mating Cycles		500
Contact Material and Plating	Beryllium Copper, Gold over Nickel	Beryllium Copper, Gold over Nickel over Copper
Contact Plating Specification	50 µin minimum	
Dielectric Type	PCTFE	PPO
Body Material and Plating	Beryllium Copper, Gold over Nickel	Stainless Steel, Passivated
Body Plating Specification	50 µin minimum	
Coupling Nut Material and Plating	Passivated Stainless Steel	
Hex Size	5/16 inch	
Torque	8 in-lbs 0.9 Nm	

Environmental Specifications

Compliance Certifications (see [product page](#) for current document)

Plotted and Other Data

Notes:

2.92mm Male to 1.85mm Female Cable Using RG405 Semi-Rigid Coax



PE3C10446

Typical Performance Data

How to Order

Part Number Configuration:

PE3C10446

- xx

uu

Unit of Measure:
cm = Centimeters
<blank> = Inches

Length
Base Number

Example: PE3C10446-12 = 12 inches long cable
PE3C10446-100cm = 100 cm long cable

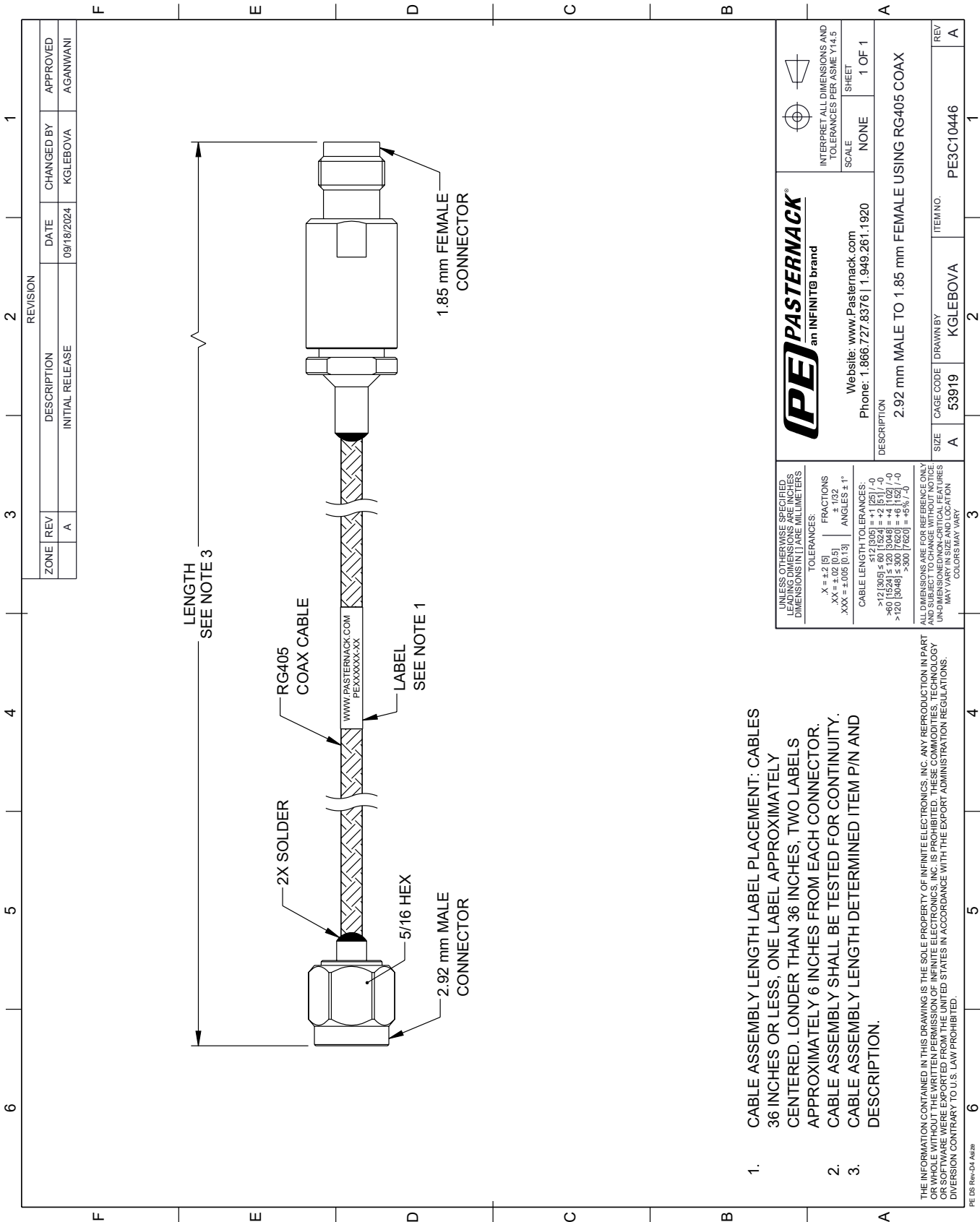
2.92mm Male to 1.85mm Female Cable Using RG405 Semi-Rigid Coax from Pasternack Enterprises has same day shipment for domestic and International orders. Our RF, microwave and millimeter wave products maintain a 99.4% availability and are part of the broadest selection in the industry.

Click the following link (or enter part number in "SEARCH" on website) to obtain additional part information including price, inventory and certifications: [2.92mm Male to 1.85mm Female Cable Using RG405 Semi-Rigid Coax PE3C10446](https://www.pasternack.com/2.92mm-male-to-1.85mm-female-cable-using-rg405-pe3c10446-p.aspx)

URL: <https://www.pasternack.com/2.92mm-male-to-1.85mm-female-cable-using-rg405-pe3c10446-p.aspx>

The information contained within this document is accurate to the best of our knowledge and representative of the part described herein. It may be necessary to make modifications to the part and/or the documentation of the part in order to implement improvements. Pasternack Enterprises reserves the right to make such changes as required. Unless otherwise stated, all specifications are nominal. Pasternack Enterprises does not make any representation or warranty regarding the suitability of the part described herein for any particular purpose, and Pasternack Enterprises does not assume liability arising out of the use of any part or document.

PE3C10446 CAD Drawing
2.92mm Male to 1.85mm Female Cable Using RG405 Semi-Rigid Coax



- 1. CABLE ASSEMBLY LENGTH LABEL PLACEMENT: CABLES 36 INCHES OR LESS, ONE LABEL APPROXIMATELY CENTERED. LONGER THAN 36 INCHES, TWO LABELS APPROXIMATELY 6 INCHES FROM EACH CONNECTOR.
- 2. CABLE ASSEMBLY SHALL BE TESTED FOR CONTINUITY.
- 3. CABLE ASSEMBLY LENGTH DETERMINED ITEM P/N AND DESCRIPTION.

THE INFORMATION CONTAINED IN THIS DRAWING IS THE SOLE PROPERTY OF INFINITE ELECTRONICS, INC. ANY REPRODUCTION IN PART OR WHOLE WITHOUT THE WRITTEN PERMISSION OF INFINITE ELECTRONICS, INC. IS PROHIBITED. THESE COMMODITIES, TECHNOLOGY OR SOFTWARE WERE EXPORTED FROM THE UNITED STATES IN ACCORDANCE WITH THE EXPORT ADMINISTRATION REGULATIONS. DIVISION CONTRARY TO U.S. LAW PROHIBITED.

UNLESS OTHERWISE SPECIFIED, LEADING DIMENSIONS ARE IN INCHES. DIMENSIONS IN [] ARE MILLIMETERS.		PE PASTERNAK an INFINITE brand		INTERPRET ALL DIMENSIONS AND TOLERANCES PER ASME Y14.5	
TOLERANCES:		Website: www.Pasternack.com		SCALE: NONE	
X = ±.2 [5]		Phone: 1.866.727.8376 1.949.261.1920		SHEET 1 OF 1	
.XX = ±.02 [0.5]		DESCRIPTION		2.92 mm MALE TO 1.85 mm FEMALE USING RG405 COAX	
.XXX = ±.005 [0.13]		SIZE		CAGE CODE	
ANGLES ± 1°		A		53919	
CABLE LENGTH TOLERANCES:		DRAWN BY		KGLEBOVA	
>12 [305] ±.60 [15.24]		ITEM NO.		PE3C10446	
>12 [305] ±.12 [3.05]		REV		A	
>60 [1524] ±.120 [3.048]		COLORS MAY VARY			
>120 [3048] ±.300 [7.620]					