

## 2.92mm Male to 2.92mm Male Right Angle Cable Using PE-118SR Semi-Rigid Coax

### PE3C10452

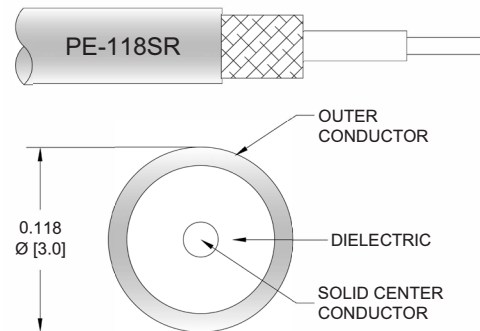


#### Configuration

- Connector 1: 2.92mm Male
- Connector 2: 2.92mm Male Right Angle
- Cable Type: PE-118SR
- Coax Flex Type: Semi-Rigid

#### Features

- Max Frequency 40 GHz
- 500 Mating Cycles



#### Applications

- General Purpose
- Laboratory Use

#### Description

Pasternack's PE3C10452 2.92mm male to 2.92mm male right angle cable using PE-118SR coax is part of our full line of RF components available for same-day shipping. Pasternack's semi-rigid RF cable assemblies are ideal for high performance applications and can be formed, using proper tooling, to the routing pattern required. This Pasternack 2.92mm to 2.92mm cable assembly has a male to male gender configuration with 50 ohm semi-rigid PE-118SR coax. The PE3C10452 2.92mm male to 2.92mm male cable assembly operates to 40 GHz. The right angle 2.92mm interface on the PE-118SR cable allows for easier connections in tight spaces.

Custom versions of most RF cable assemblies can be built and shipped same day. Custom cable assembly lengths can be obtained by specifying the desired length on the web site at time of order or by contacting a sales representative. Other available RF cable assembly value added services include connector orientation or clocking, heat shrink booting and custom labeling. RF testing can also be performed to document the electrical performance of your cable assembly.

#### Electrical Specifications

Description	Minimum	Typical	Maximum	Units
Frequency Range	DC		40	GHz
VSWR			1.4:1	

#### Specifications by Frequency

## 2.92mm Male to 2.92mm Male Right Angle Cable Using PE-118SR Semi-Rigid Coax



### PE3C10452

Part Number	Length	Description	F1	F2	F3	F4	Units	Weight (lbs)
		Frequency	2500	5000	10000	20000	MHz	
PE3C10452	Custom Lengths Available	Insertion Loss (Typ.)	0.175	0.258	0.425	0.625	dB/ft	
			0.58	0.85	1.4	2.06	dB/m	
PE3C10452-6	6 Inch	Insertion Loss (Typ.)	0.92	1.23	1.68	2.31	dB	0.049
PE3C10452-12	12 Inch	Insertion Loss (Typ.)	1.01	1.36	1.89	2.62	dB	0.06
PE3C10452-18	18 Inch	Insertion Loss (Typ.)	1.1	1.49	2.11	2.93	dB	0.072
PE3C10452-24	24 Inch	Insertion Loss (Typ.)	1.19	1.62	2.32	3.24	dB	0.083
PE3C10452-36	36 Inch	Insertion Loss (Typ.)	1.36	1.87	2.74	3.87	dB	0.106

The insertion loss data for the base model does not include loss due to the connectors. Each length includes insertion loss due to the connectors.

Loss due to Connector 1: 0.4\*SQRT(FGHz) dB  
 Loss due to Connector 2: 0.2 dB  
 Base Weight: 0.06 pounds  
 Additional Weight per Inch: 0.00188 pounds

### Mechanical Specifications

#### Cable Assembly

Width/Diameter 0.5 in [12.7 mm]  
 Weight 0.06 lbs [27.22 g]

#### Cable

Cable Type PE-118SR  
 Impedance 50 Ohms  
 Inner Conductor Type Solid  
 Inner Conductor Material and Plating Copper, Silver  
 Dielectric Type PTFE (LD)  
 Number of Shields 1  
 Shield Layer 1 Copper  
 Jacket Material Tan  
 One Time Minimum Bend Radius 0.4 in [10.16 mm]

## 2.92mm Male to 2.92mm Male Right Angle Cable Using PE-118SR Semi-Rigid Coax



### PE3C10452

#### Connectors

Description	Connector 1	Connector 2
Type	2.92mm Male	2.92mm Male Right Angle
Impedance	50 Ohms	50 Ohms
Configuration	Straight	Right Angle
Mating Cycles	500	500
Contact Material and Plating	Beryllium Copper, Gold	Beryllium Copper, Gold over Nickel over Copper
Contact Plating Specification	ASTM-B488	
Dielectric Type	PTFE	PPO
Body Material and Plating	Beryllium Copper, Gold	Stainless Steel, Passivated
Body Plating Specification	ASTM-B488	
Coupling Nut Material and Plating	Steel	
Torque	8 in-lbs 0.9 Nm	

#### Environmental Specifications

Operating Range Temperature -40 to +105 deg C

**Compliance Certifications** (see [product page](#) for current document)

#### Plotted and Other Data

Notes:

## 2.92mm Male to 2.92mm Male Right Angle Cable Using PE-118SR Semi-Rigid Coax



### PE3C10452

#### Typical Performance Data

#### How to Order

Part Number Configuration: **PE3C10452**    **- xx**    **uu**

Unit of Measure:  
cm = Centimeters  
<blank> = Inches

Length

Base Number

Example: PE3C10452-12 = 12 inches long cable  
PE3C10452-100cm = 100 cm long cable

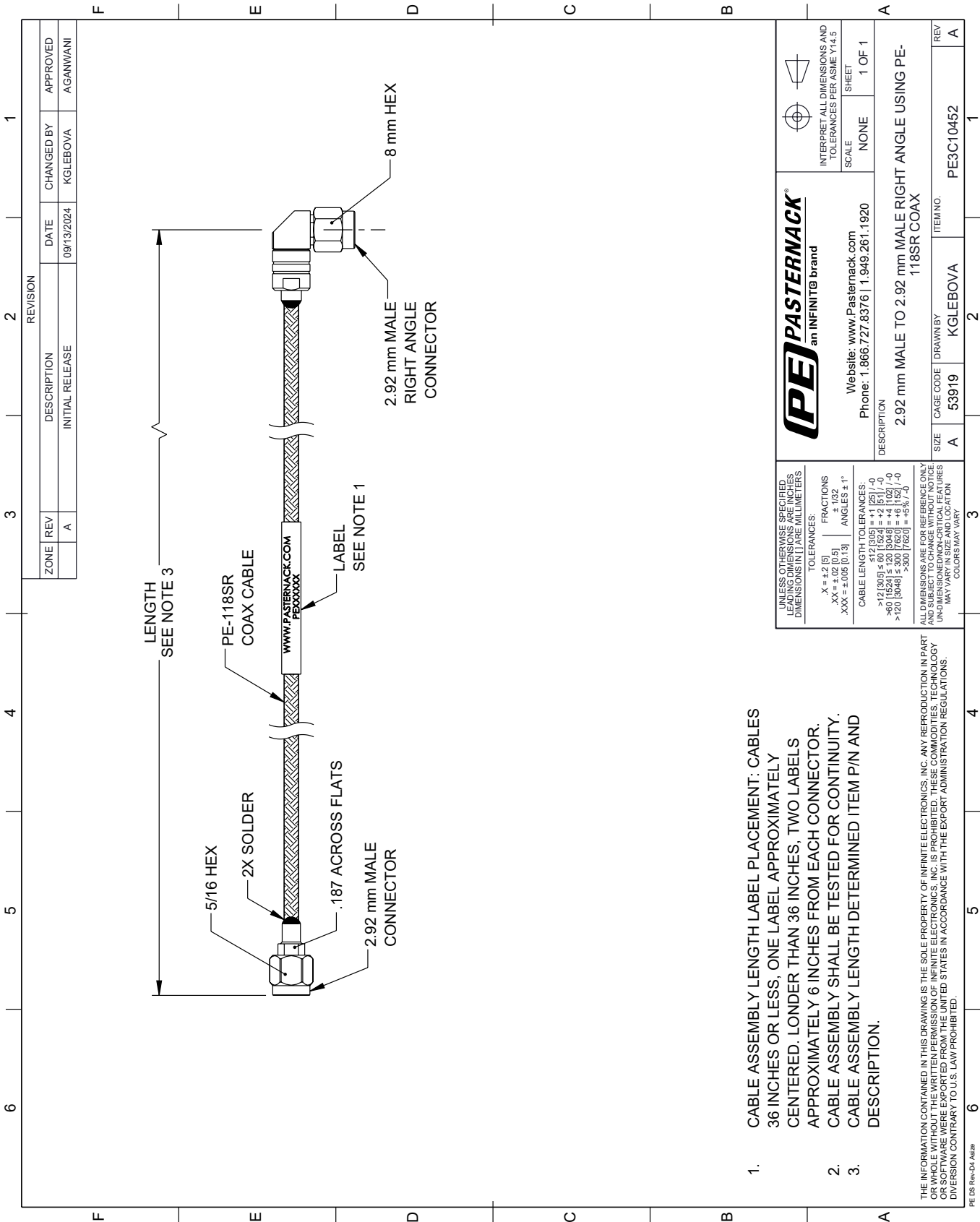
2.92mm Male to 2.92mm Male Right Angle Cable Using PE-118SR Semi-Rigid Coax from Pasternack Enterprises has same day shipment for domestic and International orders. Our RF, microwave and millimeter wave products maintain a 99.4% availability and are part of the broadest selection in the industry.

Click the following link (or enter part number in "SEARCH" on website) to obtain additional part information including price, inventory and certifications: [2.92mm Male to 2.92mm Male Right Angle Cable Using PE-118SR Semi-Rigid Coax PE3C10452](https://www.pasternack.com/2.92mm-male-to-2.92mm-male-right-angle-cable-using-pe-118sr-semi-rigid-coax-pe3c10452-p.aspx)

URL: <https://www.pasternack.com/2.92mm-male-to-2.92mm-male-cable-using-pe-118sr-pe3c10452-p.aspx>

The information contained within this document is accurate to the best of our knowledge and representative of the part described herein. It may be necessary to make modifications to the part and/or the documentation of the part in order to implement improvements. Pasternack Enterprises reserves the right to make such changes as required. Unless otherwise stated, all specifications are nominal. Pasternack Enterprises does not make any representation or warranty regarding the suitability of the part described herein for any particular purpose, and Pasternack Enterprises does not assume liability arising out of the use of any part or document.

PE3C10452 CAD Drawing
2.92mm Male to 2.92mm Male Right Angle Cable Using PE-118SR Semi-Rigid Coax



- 1. CABLE ASSEMBLY LENGTH LABEL PLACEMENT: CABLES 36 INCHES OR LESS, ONE LABEL APPROXIMATELY CENTERED. LONGER THAN 36 INCHES, TWO LABELS APPROXIMATELY 6 INCHES FROM EACH CONNECTOR.
- 2. CABLE ASSEMBLY SHALL BE TESTED FOR CONTINUITY.
- 3. CABLE ASSEMBLY LENGTH DETERMINED ITEM P/N AND DESCRIPTION.

THE INFORMATION CONTAINED IN THIS DRAWING IS THE SOLE PROPERTY OF INFINITE ELECTRONICS, INC. ANY REPRODUCTION IN PART OR WHOLE WITHOUT THE WRITTEN PERMISSION OF INFINITE ELECTRONICS, INC. IS PROHIBITED. THESE COMMODITIES, TECHNOLOGY OR SOFTWARE WERE EXPORTED FROM THE UNITED STATES IN ACCORDANCE WITH THE EXPORT ADMINISTRATION REGULATIONS. DIVISION CONTRARY TO U.S. LAW PROHIBITED.

PE D9 Rev-D4 Adda