

MMCX Plug Right Angle to SMA Female Cable Using PE-P047 Coax



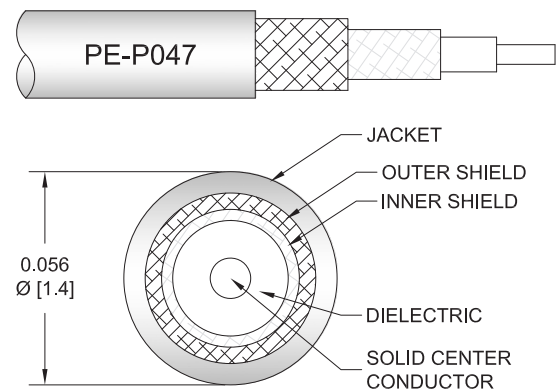
PE3C10798

Configuration

- Connector 1: MMCX Plug Right Angle
- Connector 2: SMA Female
- Cable Type: PE-P047
- Coax Flex Type: Flexible

Features

- Max Frequency 6 GHz
- Shielding Effectivity > 90 dB
- 70% Phase Velocity
- Double Shielded
- FEP Jacket



Applications

- General Purpose
- Laboratory Use

Description

Pasternack's PE3C10798 MMCX plug right angle to SMA female cable using PE-P047 coax is part of our full line of RF components available for same-day shipping. Pasternack's flexible RF cable assemblies are ideal for applications where tight bends and flexure are required. This Pasternack MMCX to SMA cable assembly has a plug to female gender configuration with 50 ohm flexible PE-P047 coax. The PE3C10798 MMCX plug to SMA female cable assembly operates to 6 GHz. The right angle MMCX interface on the PE-P047 cable allows for easier connections in tight spaces. The double shielding of this Pasternack cable assembly provides excellent shielding effectiveness of better than 90 dB.

Custom versions of most RF cable assemblies can be built and shipped same day. Custom cable assembly lengths can be obtained by specifying the desired length on the web site at time of order or by contacting a sales representative. Other available RF cable assembly value added services include connector orientation or clocking, heat shrink booting and custom labeling. RF testing can also be performed to document the electrical performance of your cable assembly.

Electrical Specifications

Description	Minimum	Typical	Maximum	Units
Frequency Range	DC		6	GHz
VSWR			1.4:1	
Velocity of Propagation		70		%
RF Shielding	90			dB
Capacitance		29 [95.14]		pF/ft [pF/m]

Specifications by Frequency

MMCX Plug Right Angle to SMA Female
Cable Using PE-P047 Coax



PE3C10798

Part Number	Length	Description	F1	F2	F3	Units	Weight (lbs)
			Frequency	1000	2500	6000	
PE3C10798	Custom Lengths Available	Insertion Loss (Typ.)	0.335	0.539	0.869	dB/ft	
			1.1	1.77	2.86	dB/m	
PE3C10798-6	6 In	Insertion Loss (Typ.)	0.47	0.57	0.74	dB	0.012
PE3C10798-12	12 In	Insertion Loss (Typ.)	0.64	0.84	1.17	dB	0.014
PE3C10798-18	18 In	Insertion Loss (Typ.)	0.81	1.11	1.61	dB	0.015
PE3C10798-24	24 In	Insertion Loss (Typ.)	0.97	1.38	2.04	dB	0.017
PE3C10798-36	36 In	Insertion Loss (Typ.)	1.31	1.92	2.91	dB	0.02

The insertion loss data for the base model does not include loss due to the connectors. Each length includes insertion loss due to the connectors.

Loss due to Connector 1: 0.2 dB
 Loss due to Connector 2: 0.1 dB
 Base Weight: 0.014 pounds
 Additional Weight per Inch: 0.00025 pounds

Mechanical Specifications

Cable Assembly

Width/Diameter 0.5 in [12.7 mm]
 Weight 1.571 lbs [712.59 g]

Cable

Cable Type PE-P047
 Impedance 50 Ohms
 Inner Conductor Type Solid
 Inner Conductor Material and Plating Copper, Silver
 Dielectric Type FEP
 Number of Shields 2
 Shield Layer 1 Silver Plated Copper Tape
 Shield Layer 2 Silver Plated Copper Braid
 Jacket Material FEP, Blue
 Jacket Diameter 0.056 in [1.42 mm]
 One Time Minimum Bend Radius 0.2 in [5.08 mm]
 Repeated Minimum Bend Radius 0.4 in [10.16 mm]

MMCX Plug Right Angle to SMA Female
Cable Using PE-P047 Coax



PE3C10798

Connectors

Description	Connector 1	Connector 2
Type	MMCX Plug Right Angle	SMA Female
Specification		MIL-STD-348
Impedance	50 Ohms	50 Ohms
Configuration	Right Angle	Straight
Contact Material and Plating	Brass, Gold	Beryllium Copper, Gold
Contact Plating Specification		MIL-G-45204
Dielectric Type	PTFE	PTFE
Body Material and Plating	Brass, Gold	Brass, Gold
Body Plating Specification		MIL-G-45204

Environmental Specifications

Operating Range Temperature -65 to +165 deg C

Compliance Certifications (see [product page](#) for current document)

Plotted and Other Data

Notes:

MMCX Plug Right Angle to SMA Female Cable Using PE-P047 Coax



PE3C10798

Typical Performance Data

How to Order

Part Number Configuration:

PE3C10798

- **xx**

uu

Unit of Measure:

cm = Centimeters

<blank> = Inches

Length

Base Number

Example: PE3C10798-12 = 12 inches long cable
PE3C10798-100cm = 100 cm long cable

MMCX Plug Right Angle to SMA Female Cable Using PE-P047 Coax from Pasternack Enterprises has same day shipment for domestic and International orders. Our RF, microwave and millimeter wave products maintain a 99.4% availability and are part of the broadest selection in the industry.

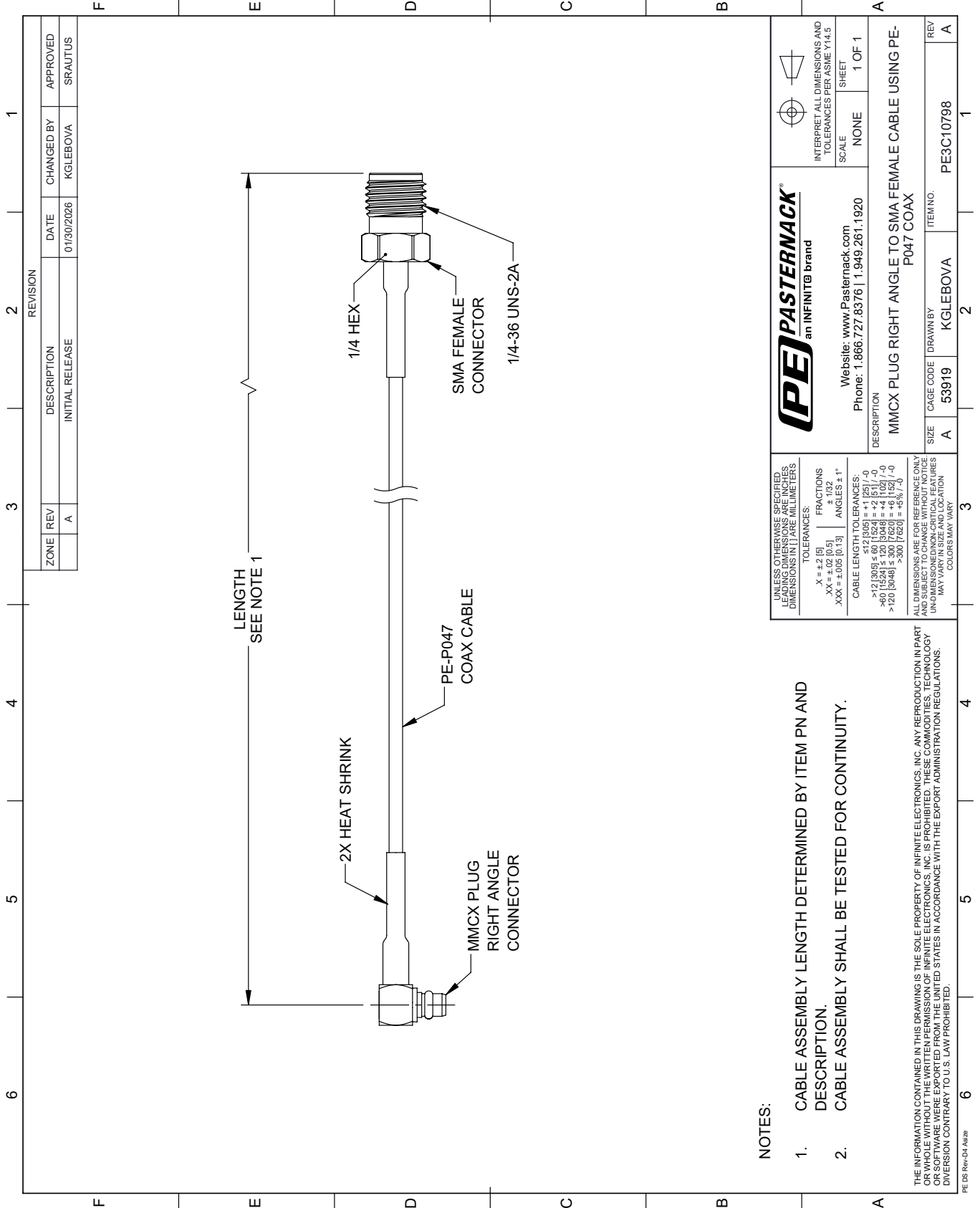
Click the following link (or enter part number in "SEARCH" on website) to obtain additional part information including price, inventory and certifications: [MMCX Plug Right Angle to SMA Female Cable Using PE-P047 Coax PE3C10798](#)

URL: <https://www.pasternack.com/mmcx-plug-right-angle-to-sma-female-cable-using-pe-p047-pe3c10798-p.aspx>

The information contained within this document is accurate to the best of our knowledge and representative of the part described herein. It may be necessary to make modifications to the part and/or the documentation of the part in order to implement improvements. Pasternack Enterprises reserves the right to make such changes as required. Unless otherwise stated, all specifications are nominal. Pasternack Enterprises does not make any representation or warranty regarding the suitability of the part described herein for any particular purpose, and Pasternack Enterprises does not assume liability arising out of the use of any part or document.

PE3C10798 CAD Drawing

MMCX Plug Right Angle to SMA Female Cable Using PE-P047 Coax



REVISION		DATE	CHANGED BY	APPROVED
ZONE	REV	DESCRIPTION		
	A	INITIAL RELEASE	KGLEBOVA	SRAUTUS

NOTES:

1. CABLE ASSEMBLY LENGTH DETERMINED BY ITEM PN AND DESCRIPTION.
2. CABLE ASSEMBLY SHALL BE TESTED FOR CONTINUITY.

THE INFORMATION CONTAINED IN THIS DRAWING IS THE SOLE PROPERTY OF INFINITE ELECTRONICS, INC. ANY REPRODUCTION IN PART OR WHOLE WITHOUT THE WRITTEN PERMISSION OF INFINITE ELECTRONICS, INC. IS PROHIBITED. THESE COMMODITIES, TECHNOLOGY OR SOFTWARE WERE EXPORTED FROM THE UNITED STATES IN ACCORDANCE WITH THE EXPORT ADMINISTRATION REGULATIONS. DIVISION CONTRARY TO U.S. LAW PROHIBITED.

UNLESS OTHERWISE SPECIFIED, DIMENSIONS ARE IN INCHES. DIMENSIONS IN [] ARE MILLIMETERS.

TOLERANCES:
 .X = ±.2 [5]
 .XX = ±.02 [0.5]
 .XXX = ±.005 [0.13]

FRACTIONS
 ± 1/32

ANGLES ± 1°

CABLE LENGTH TOLERANCES:
 <12 [305] ≤ 60 [1524] = ±.12 [3] / -0
 >60 [1524] ≤ 120 [3048] = ±.10 [2.5] / -0
 >120 [3048] ≤ 300 [7620] = ±.12 [3] / -0
 >300 [7620] = ±.15 [3.8] / -0

ALL DIMENSIONS ARE FOR REFERENCE ONLY. UNLESS OTHERWISE SPECIFIED, DIMENSIONS ARE NON-CRITICAL FEATURES. DIMENSIONS MAY VARY.

COLORS MAY VARY

PE PASTERNAK
 an INFINITIB brand

Website: www.Pasternack.com
 Phone: 1.866.727.8376 | 1.949.261.1920

INTERPRET ALL DIMENSIONS AND TOLERANCES PER ASME Y14.5

SCALE: NONE

SHEET: 1 OF 1

DESCRIPTION	SIZE	CAGE CODE	DRAWN BY	ITEM NO.	REV
MMCX PLUG RIGHT ANGLE TO SMA FEMALE CABLE USING PE-P047 COAX	A	53919	KGLEBOVA	PE3C10798	A