

2.92mm Male to SMPS Female VITA
67.3 Cable Using PE-P047HF Coax



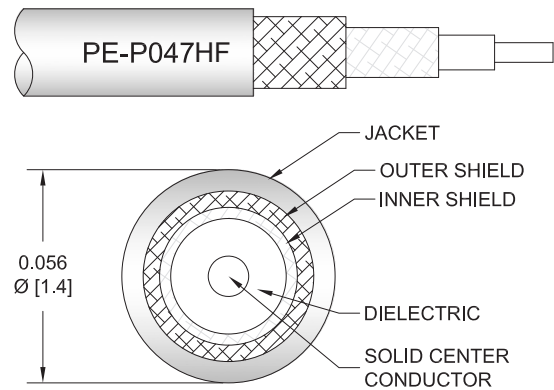
PE3C10823

Configuration

- Connector 1: 2.92mm Male
- Connector 2: SMPS Female
- Cable Type: PE-P047HF
- Coax Flex Type: High Flex

Features

- Max Frequency 40 GHz
- Shielding Effectivity > 90 dB
- 70% Phase Velocity
- Double Shielded
- FEP Jacket



Applications

- General Purpose
- Laboratory Use

Description

Pasternack's PE3C10823 2.92mm male to SMPS female cable using PE-P047HF coax is part of our full line of RF components available for same-day shipping. This Pasternack 2.92mm to SMPS cable assembly has a male to female gender configuration with 50 ohm high flex PE-P047HF coax. The PE3C10823 2.92mm male to SMPS female cable assembly operates to 40 GHz. The double shielding of this Pasternack cable assembly provides excellent shielding effectiveness of better than 90 dB.

Custom versions of most RF cable assemblies can be built and shipped same day. Custom cable assembly lengths can be obtained by specifying the desired length on the web site at time of order or by contacting a sales representative. Other available RF cable assembly value added services include connector orientation or clocking, heat shrink booting and custom labeling. RF testing can also be performed to document the electrical performance of your cable assembly.

Electrical Specifications

Description	Minimum	Typical	Maximum	Units
Frequency Range	DC		40	GHz
VSWR			1.4:1	
Velocity of Propagation		70		%
RF Shielding	90			dB
Capacitance		29 [95.14]		pF/ft [pF/m]

Specifications by Frequency

2.92mm Male to SMPS Female VITA
67.3 Cable Using PE-P047HF Coax



PE3C10823

Part Number	Length	Description	F1	F2	F3	F4	F5	Units	Weight (lbs)
			Frequency					MHz	
PE3C10823	Custom Lengths Available	Insertion Loss (Typ.)	0.557	0.808	1.177	1.784	2.774	dB/ft	
			1.83	2.66	3.87	5.86	9.11	dB/m	
PE3C10823-6	6 In	Insertion Loss (Typ.)	0.48	0.61	0.79	1.1	1.59	dB	0.011
PE3C10823-9	9 In	Insertion Loss (Typ.)	0.62	0.81	1.09	1.54	2.29	dB	0.012
PE3C10823-12	12 In	Insertion Loss (Typ.)	0.76	1.01	1.38	1.99	2.98	dB	0.013
PE3C10823-18	18 In	Insertion Loss (Typ.)	1.04	1.42	1.97	2.88	4.37	dB	0.015
PE3C10823-24	24 In	Insertion Loss (Typ.)	1.32	1.82	2.56	3.77	5.75	dB	0.017

The insertion loss data for the base model does not include loss due to the connectors. Each length includes insertion loss due to the connectors.

Loss due to Connector 1: 0.1 dB
 Loss due to Connector 2: 0.1 dB
 Base Weight: 0.0129 pounds
 Additional Weight per Inch: 0.00034 pounds

Mechanical Specifications

Cable Assembly

Width/Diameter 0.5 in [12.7 mm]
 Weight 0.013 lbs [5.9 g]

Cable

Cable Type PE-P047HF
 Impedance 50 Ohms
 Inner Conductor Type Solid
 Inner Conductor Material and Plating Copper, Silver
 Dielectric Type PTFE
 Number of Shields 2
 Shield Layer 1 Silver Plated Copper Tape
 Shield Layer 2 Silver Plated Copper Braid
 Jacket Material FEP, Blue
 Jacket Diameter 0.06 in [1.52 mm]
 Repeated Minimum Bend Radius 0.1 in [2.54 mm]

2.92mm Male to SMPS Female VITA
67.3 Cable Using PE-P047HF Coax



PE3C10823

Connectors

Description	Connector 1	Connector 2
Type	2.92mm Male	SMPS Female
Impedance	50 Ohms	50 Ohms
Configuration	Straight	Straight
Contact Material and Plating	Beryllium Copper, Gold over Nickel	Beryllium Copper, Gold
Contact Plating Specification	50 µin minimum	
Dielectric Type	PEI	PTFE
Outer Conductor Material and Plating		Beryllium Copper, Gold
Body Material and Plating	Passivated Stainless Steel	Passivated Stainless Steel
Body Plating Specification	SAE-AMS-2700	
Coupling Nut Material and Plating	Passivated Stainless Steel	
Coupling Nut Plating Specification	SAE-AMS-2700	
Hex Size	5/16 inch	
Torque	8 in-lbs 0.9 Nm	

Environmental Specifications

Compliance Certifications (see [product page](#) for current document)

Plotted and Other Data

Notes:

2.92mm Male to SMPS Female VITA
67.3 Cable Using PE-P047HF Coax



PE3C10823

Typical Performance Data

How to Order

Part Number Configuration:

PE3C10823

- **xx**

uu

Unit of Measure:
cm = Centimeters
<blank> = Inches
Length
Base Number

Example: PE3C10823-12 = 12 inches long cable
PE3C10823-100cm = 100 cm long cable

2.92mm Male to SMPS Female VITA 67.3 Cable Using PE-P047HF Coax from Pasternack Enterprises has same day shipment for domestic and International orders. Our RF, microwave and millimeter wave products maintain a 99.4% availability and are part of the broadest selection in the industry.

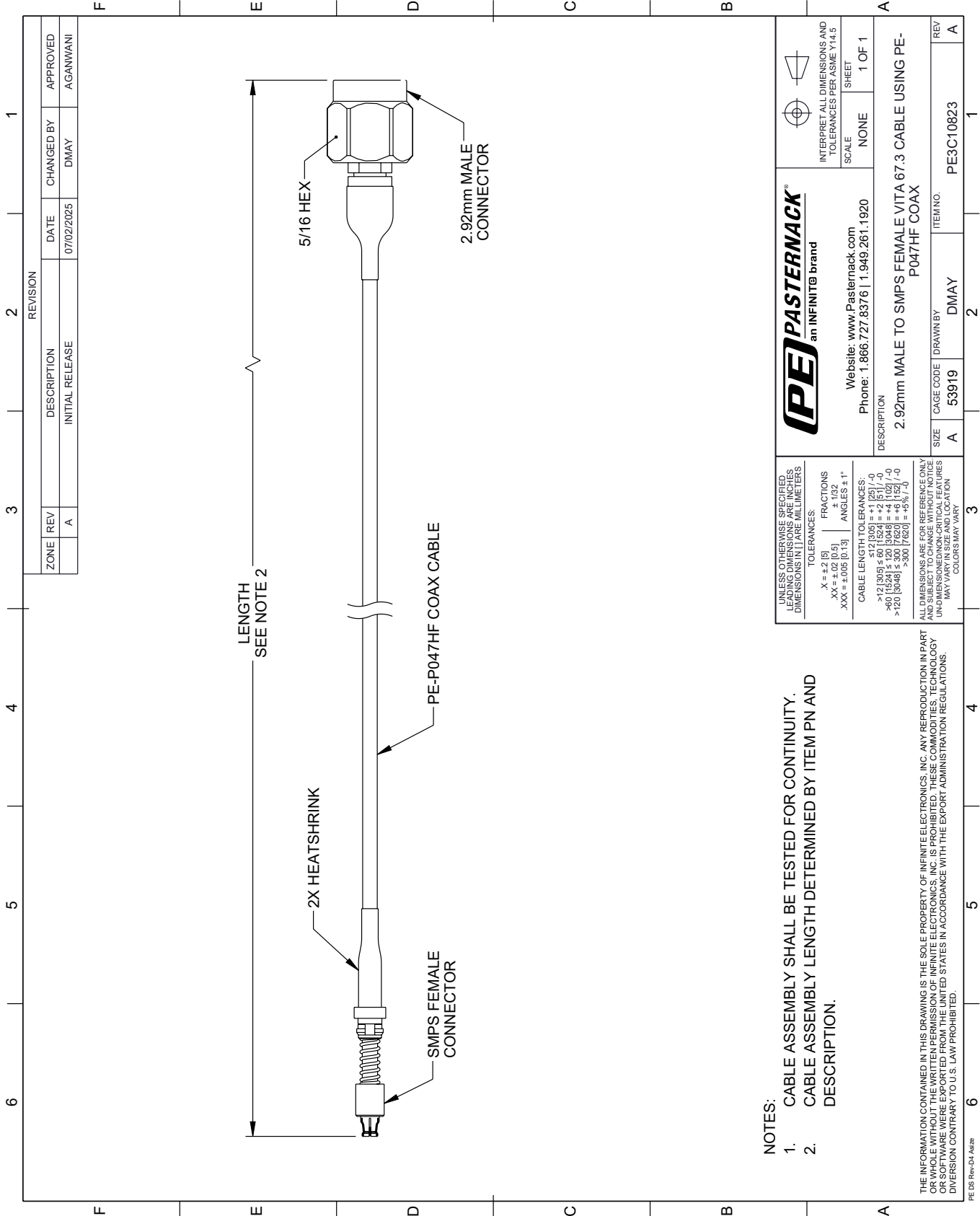
Click the following link (or enter part number in "SEARCH" on website) to obtain additional part information including price, inventory and certifications: [2.92mm Male to SMPS Female VITA 67.3 Cable Using PE-P047HF Coax PE3C10823](https://www.pasternack.com/2.92mm-male-to-smmps-female-vita-67.3-cable-using-pe-p047hf-pe3c10823-p.aspx)

URL: <https://www.pasternack.com/2.92mm-male-to-smmps-female-vita-67.3-cable-using-pe-p047hf-pe3c10823-p.aspx>

The information contained within this document is accurate to the best of our knowledge and representative of the part described herein. It may be necessary to make modifications to the part and/or the documentation of the part in order to implement improvements. Pasternack Enterprises reserves the right to make such changes as required. Unless otherwise stated, all specifications are nominal. Pasternack Enterprises does not make any representation or warranty regarding the suitability of the part described herein for any particular purpose, and Pasternack Enterprises does not assume liability arising out of the use of any part or document.

PE3C10823 CAD Drawing

2.92mm Male to SMPS Female VITA 67.3 Cable Using PE-P047HF Coax



REVISION		DATE	CHANGED BY	APPROVED
ZONE	REV	DESCRIPTION	INITIAL RELEASE	
	A			AGANWANI

- NOTES:
1. CABLE ASSEMBLY SHALL BE TESTED FOR CONTINUITY.
 2. CABLE ASSEMBLY LENGTH DETERMINED BY ITEM PN AND DESCRIPTION.

PE PASTERNAK
an INFINITI® brand

Website: www.Pasternack.com
Phone: 1.866.727.8376 | 1.949.261.1920

SCALE: NONE
SHEET: 1 OF 1

INTERPRET ALL DIMENSIONS AND TOLERANCES PER ASME Y14.5

DESCRIPTION: 2.92mm MALE TO SMPS FEMALE VITA 67.3 CABLE USING PE-P047HF COAX

SIZE	A	CAGE CODE	DMAY	ITEM NO.	PE3C10823
REV	A	DRAWN BY		DMAY	

UNLESS OTHERWISE SPECIFIED, LEADING DIMENSIONS ARE IN INCHES AND TRAILING DIMENSIONS ARE IN MILLIMETERS

TOLERANCES:
 .X = ±.2 (5) FRACTIONS ± 1/32
 .XX = ±.02 (0.5) ANGLES ± 1°
 .XXX = ±.005 (0.13)

CABLE LENGTH TOLERANCES:
 >12 (305) ≤ 60 (1524) = ±.1 (25) / -0
 >60 (1524) ≤ 120 (3048) = ±.4 (102) / -0
 >120 (3048) ≤ 300 (7620) = ±.6 (152) / -0

ALL DIMENSIONS ARE FOR REFERENCE ONLY. UNLESS OTHERWISE SPECIFIED, DIMENSIONS MAY VARY IN SIZE AND LOCATION. COLORS MAY VARY.

THE INFORMATION CONTAINED IN THIS DRAWING IS THE SOLE PROPERTY OF INFINITE ELECTRONICS, INC. ANY REPRODUCTION IN PART OR WHOLE WITHOUT THE WRITTEN PERMISSION OF INFINITE ELECTRONICS, INC. IS PROHIBITED. THESE COMMODITIES, TECHNOLOGY OR SERVICES ARE EXPORTED FROM THE UNITED STATES IN ACCORDANCE WITH THE EXPORT ADMINISTRATION REGULATIONS. DIVERSION CONTRARY TO U.S. LAW PROHIBITED.

PE DS Rev-04 Add2