

SMA Male to SMA Male Non-Magnetic Cable Using PE-141FL-NM Coax



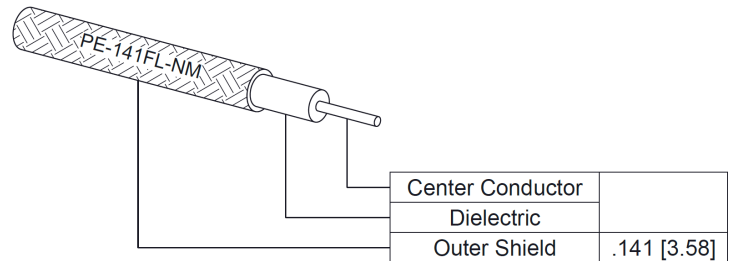
PE3C10833

Configuration

- Connector 1: SMA Male
- Connector 2: SMA Male
- Cable Type: PE-141FL-NM
- Coax Flex Type: Formable

Features

- Max Frequency 18 GHz
- Shielding Effectivity > 90 dB
- 70% Phase Velocity
- Copper Jacket
- 500 Mating Cycles



Applications

- General Purpose
- Laboratory Use

Description

Pasternack's PE3C10833 SMA male to SMA male cable using PE-141FL-NM coax is part of our full line of RF components available for same-day shipping. Pasternack's formable RF cable assemblies provide an alternative to costly pre-formed semi-rigid assemblies since they are hand formable. This Pasternack SMA to SMA cable assembly has a male to male gender configuration with 50 ohm formable PE-141FL-NM coax. The PE3C10833 SMA male to SMA male cable assembly operates to 18 GHz.

Custom versions of most RF cable assemblies can be built and shipped same day. Custom cable assembly lengths can be obtained by specifying the desired length on the web site at time of order or by contacting a sales representative. Other available RF cable assembly value added services include connector orientation or clocking, heat shrink booting and custom labeling. RF testing can also be performed to document the electrical performance of your cable assembly.

Electrical Specifications

Description	Minimum	Typical	Maximum	Units
Frequency Range	DC		18	GHz
VSWR			1.4:1	
Velocity of Propagation		70		%
RF Shielding	90			dB

Specifications by Frequency

SMA Male to SMA Male Non-Magnetic
Cable Using PE-141FL-NM Coax



PE3C10833

Part Number	Length	Description	F1	F2	F3	F4	F5	Units	Weight (lbs)
			Frequency		1000	2000	4500	9000	
PE3C10833	Custom Lengths Available	Insertion Loss (Typ.)	0.162	0.219	0.363	0.553	0.852	dB/ft	
			0.54	0.72	1.2	1.82	2.8	dB/m	
PE3C10833-6	6 inch	Insertion Loss (Typ.)	0.42	0.45	0.52	0.62	0.77	dB	0.664
PE3C10833-12	12 inch	Insertion Loss (Typ.)	0.5	0.56	0.71	0.9	1.19	dB	1.324
PE3C10833-24	24 inch	Insertion Loss (Typ.)	0.67	0.78	1.07	1.45	2.05	dB	2.644
PE3C10833-36	36 inch	Insertion Loss (Typ.)	0.83	1	1.43	2	2.9	dB	3.964
PE3C10833-60	60 inch	Insertion Loss (Typ.)	1.15	1.44	2.16	3.11	4.6	dB	6.604

The insertion loss data for the base model does not include loss due to the connectors. Each length includes insertion loss due to the connectors.

Loss due to Connector 1: 0.169 dB
 Loss due to Connector 2: 0.169 dB
 Base Weight: 1.324 pounds
 Additional Weight per Inch: 0.11 pounds

Mechanical Specifications

Cable Assembly

Width/Diameter 0.5 in [12.7 mm]
 Weight 1.324 lbs [600.56 g]

Cable

Cable Type PE-141FL-NM
 Impedance 50 Ohms
 Inner Conductor Type Solid
 Inner Conductor Material and Plating Silver Plated Copper
 Dielectric Type PTFE
 Number of Shields 1
 Outer Conductor 1 Material and Plating Copper-Tin Composite
 Jacket Material Copper
 Repeated Minimum Bend Radius 0.375 in [9.53 mm]

SMA Male to SMA Male Non-Magnetic
Cable Using PE-141FL-NM Coax



PE3C10833

Connectors

Description	Connector 1	Connector 2
Type	SMA Male	SMA Male
Impedance	50 Ohms	50 Ohms
Configuration	Straight	Straight
Mating Cycles	500	500
Contact Material and Plating	Gold	Gold
Contact Plating Specification	MIL-G-45204	MIL-G-45204
Dielectric Type	PTFE	PTFE
Body Material and Plating	Brass, Gold	Brass, Gold
Body Plating Specification	ASTM-B-16	ASTM-B-16
Coupling Nut Material and Plating	Brass, Gold	Brass, Gold
Coupling Nut Plating Specification	ASTM-B-16	ASTM-B-16

Environmental Specifications

Operating Range Temperature -55 to +165 deg C

Compliance Certifications (see [product page](#) for current document)

Plotted and Other Data

Notes:

SMA Male to SMA Male Non-Magnetic Cable Using PE-141FL-NM Coax



PE3C10833

Typical Performance Data

How to Order

Part Number Configuration:

PE3C10833

- **xx**

uu

Unit of Measure:

cm = Centimeters

<blank> = Inches

Length

Base Number

Example: PE3C10833-12 = 12 inches long cable
PE3C10833-100cm = 100 cm long cable

SMA Male to SMA Male Non-Magnetic Cable Using PE-141FL-NM Coax from Pasternack Enterprises has same day shipment for domestic and International orders. Our RF, microwave and millimeter wave products maintain a 99.4% availability and are part of the broadest selection in the industry.

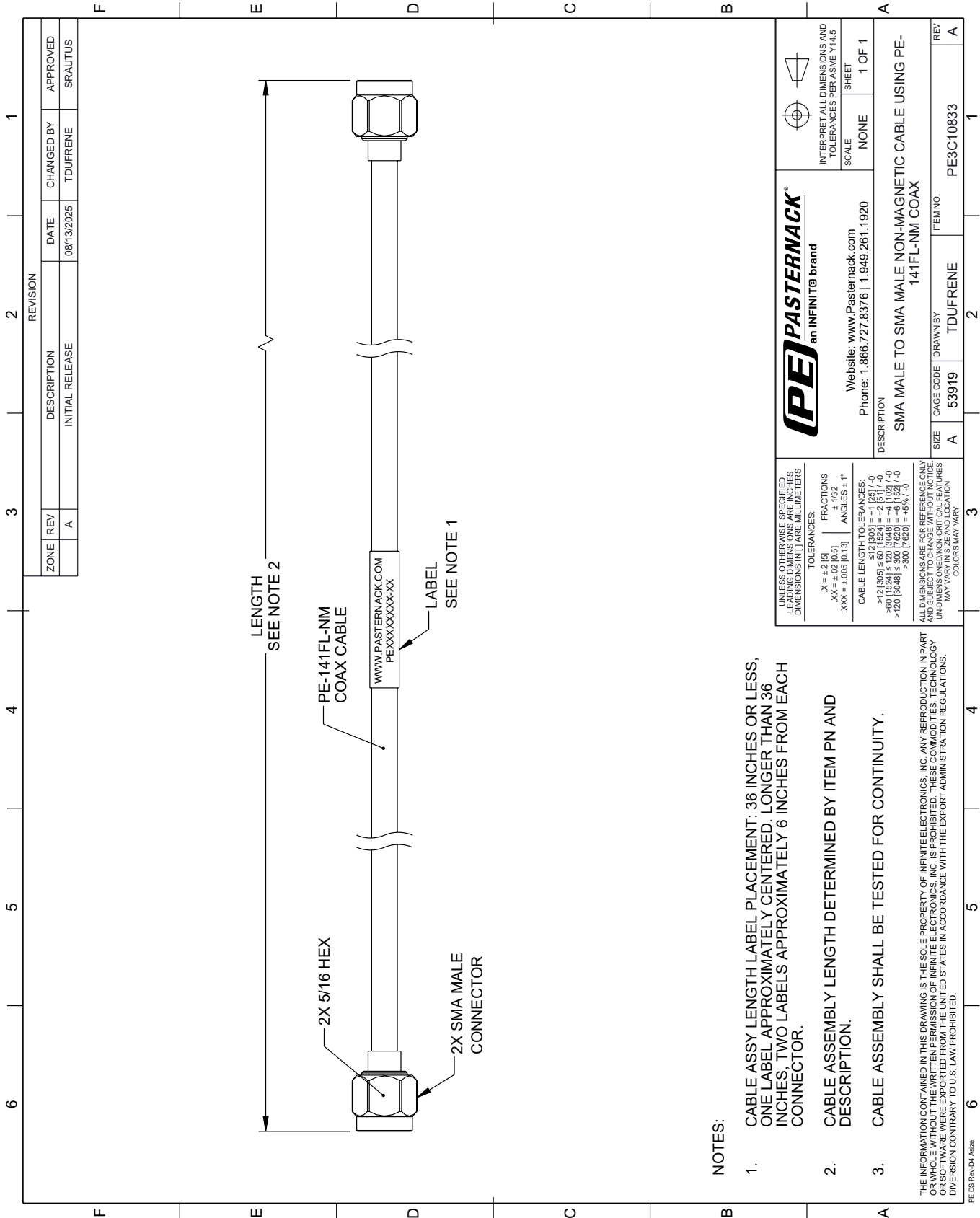
Click the following link (or enter part number in "SEARCH" on website) to obtain additional part information including price, inventory and certifications: [SMA Male to SMA Male Non-Magnetic Cable Using PE-141FL-NM Coax PE3C10833](#)

URL: <https://www.pasternack.com/sma-male-to-sma-male-non-magnetic-cable-using-pe-141fl-nm-pe3c10833-p.aspx>

The information contained within this document is accurate to the best of our knowledge and representative of the part described herein. It may be necessary to make modifications to the part and/or the documentation of the part in order to implement improvements. Pasternack Enterprises reserves the right to make such changes as required. Unless otherwise stated, all specifications are nominal. Pasternack Enterprises does not make any representation or warranty regarding the suitability of the part described herein for any particular purpose, and Pasternack Enterprises does not assume liability arising out of the use of any part or document.

PE3C10833 CAD Drawing


SMA Male to SMA Male Non-Magnetic Cable Using PE-141FL-NM Coax



NOTES:

1. CABLE ASSY LENGTH LABEL PLACEMENT: 36 INCHES OR LESS, ONE LABEL APPROXIMATELY CENTERED, LONGER THAN 36 INCHES, TWO LABELS APPROXIMATELY 6 INCHES FROM EACH CONNECTOR.
2. CABLE ASSEMBLY LENGTH DETERMINED BY ITEM PN AND DESCRIPTION.
3. CABLE ASSEMBLY SHALL BE TESTED FOR CONTINUITY.

THE INFORMATION CONTAINED IN THIS DRAWING IS THE SOLE PROPERTY OF INFINITE ELECTRONICS, INC. ANY REPRODUCTION IN PART OR WHOLE WITHOUT THE WRITTEN PERMISSION OF INFINITE ELECTRONICS, INC. IS PROHIBITED. THESE COMMODITIES, TECHNOLOGY OR SOFTWARE WERE EXPORTED FROM THE UNITED STATES IN ACCORDANCE WITH THE EXPORT ADMINISTRATION REGULATIONS. DIVERSION CONTRARY TO U.S. LAW PROHIBITED.

 PASTERNAK an INFINITE brand		Website: www.Pasternack.com Phone: 1.866.727.8376 1.949.261.1920	INTERPRET ALL DIMENSIONS AND TOLERANCES PER ASME Y14.5 SCALE NONE SHEET 1 OF 1
UNLESS OTHERWISE SPECIFIED, LEADING DIMENSIONS ARE IN INCHES, DIMENSIONS IN [] ARE MILLIMETERS. TOLERANCES: .X = ±.2 [5] .XX = ±.02 [0.5] .XXX = ±.005 [0.13] FRACTIONS ± 1/32 ANGLES ± 1°		CABLE LENGTH TOLERANCES: >12 [305] ≤ 60 [1524] = ±1 [25] / -0 >60 [1524] ≤ 120 [3048] = ±4 [102] / -0 >120 [3048] ≤ 300 [7620] = ±5% / -0	
ALL DIMENSIONS ARE FOR REFERENCE ONLY. UNDIMENSIONED NON-CRITICAL FEATURES MAY VARY IN SIZE AND LOCATION. COLORS MAY VARY.		SMA MALE TO SMA MALE NON-MAGNETIC CABLE USING PE-141FL-NM COAX	
DESCRIPTION	SIZE	CAGE CODE	ITEM NO.
SMA MALE TO SMA MALE NON-MAGNETIC CABLE USING PE-141FL-NM COAX	A	53919	PE3C10833
DRAWN BY	TDUFRENE	REV	A