

## SMP Female Right Angle to SMP Female Non-Magnetic Cable Using PE-SR047-NM Coax



### PE3C10854

#### Configuration

- Connector 1: SMP Female Right Angle
- Connector 2: SMP Female
- Cable Type: PE-SR047-NM
- Coax Flex Type: Semi-Rigid

#### Features

- Max Frequency 12.4 GHz
- Shielding Effectivity > 165 dB
- 69.5% Phase Velocity

#### Applications

- General Purpose
- Laboratory Use

#### Description

Pasternack's PE3C10854 SMP female right angle to SMP female cable using PE-SR047-NM coax is part of our full line of RF components available for same-day shipping. Pasternack's semi-rigid RF cable assemblies are ideal for high performance applications and can be formed, using proper tooling, to the routing pattern required. This Pasternack SMP to SMP cable assembly has a female to female gender configuration with 50 ohm semi-rigid PE-SR047-NM coax. The PE3C10854 SMP female to SMP female cable assembly operates to 12.4 GHz. The right angle SMP interface on the PE-SR047-NM cable allows for easier connections in tight spaces.

Custom versions of most RF cable assemblies can be built and shipped same day. Custom cable assembly lengths can be obtained by specifying the desired length on the web site at time of order or by contacting a sales representative. Other available RF cable assembly value added services include connector orientation or clocking, heat shrink booting and custom labeling. RF testing can also be performed to document the electrical performance of your cable assembly.

#### Electrical Specifications

Description	Minimum	Typical	Maximum	Units
Frequency Range	DC		12.4	GHz
VSWR			1.7:1	
Velocity of Propagation		69.5		%
RF Shielding	165			dB

#### Specifications by Frequency

## SMP Female Right Angle to SMP Female Non-Magnetic Cable Using PE-SR047-NM Coax



### PE3C10854

Part Number	Length	Description	F1	F2	F3	F4	F5	Units	Weight (lbs)
			Frequency		500	1000	2500		
PE3C10854	Custom Lengths Available	Insertion Loss (Typ.)	0.24	0.34	0.508	0.79	1.266	dB/ft	
			0.79	1.12	1.67	2.6	4.16	dB/m	
PE3C10854-6	6 inch	Insertion Loss (Typ.)	0.27	0.32	0.43	0.59	0.86	dB	0.104
PE3C10854-9	9 inch	Insertion Loss (Typ.)	0.33	0.41	0.55	0.78	1.18	dB	0.105
PE3C10854-12	12 inch	Insertion Loss (Typ.)	0.39	0.49	0.68	0.98	1.5	dB	0.106
PE3C10854-18	18 inch	Insertion Loss (Typ.)	0.51	0.66	0.93	1.38	2.13	dB	0.109
PE3C10854-24	24 inch	Insertion Loss (Typ.)	0.63	0.83	1.19	1.77	2.76	dB	0.111

The insertion loss data for the base model does not include loss due to the connectors. Each length includes insertion loss due to the connectors.

Loss due to Connector 1:	0.12 dB
Loss due to Connector 2:	0.03*SQRT(FGHz) dB
Base Weight:	0.106 pounds
Additional Weight per Inch:	0.00034 pounds

### Mechanical Specifications

#### Cable Assembly

Width/Diameter	0.5 in [12.7 mm]
Weight	0.106 lbs [48.08 g]

#### Cable

Cable Type	PE-SR047-NM
Impedance	50 Ohms
Inner Conductor Material and Plating	Copper, Silver
Dielectric Type	PTFE
Outer Conductor 1 Material and Plating	Copper
One Time Minimum Bend Radius	0.05 in [1.27 mm]

### Connectors

Description	Connector 1	Connector 2
Type	SMP Female Right Angle	SMP Female
Impedance	50 Ohms	50 Ohms
Configuration	Right Angle	Straight
Mating Cycles	500	
Contact Material and Plating	Beryllium Copper, Gold over Copper	Beryllium Copper, Gold
Dielectric Type		Gold Plated Beryllium Copper
Body Material and Plating	Bronze, Copper-Tin-Zinc Alloy over Silver	Beryllium Copper, Gold

## SMP Female Right Angle to SMP Female Non-Magnetic Cable Using PE-SR047-NM Coax



### PE3C10854

#### Environmental Specifications

**Compliance Certifications** (see [product page](#) for current document)

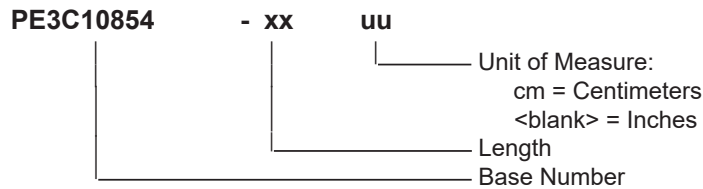
#### Plotted and Other Data

Notes:

#### Typical Performance Data

#### How to Order

Part Number Configuration:



Example: PE3C10854-12 = 12 inches long cable  
PE3C10854-100cm = 100 cm long cable

SMP Female Right Angle to SMP Female Non-Magnetic Cable Using PE-SR047-NM Coax from Pasternack Enterprises has same day shipment for domestic and International orders. Our RF, microwave and millimeter wave products maintain a 99.4% availability and are part of the broadest selection in the industry.

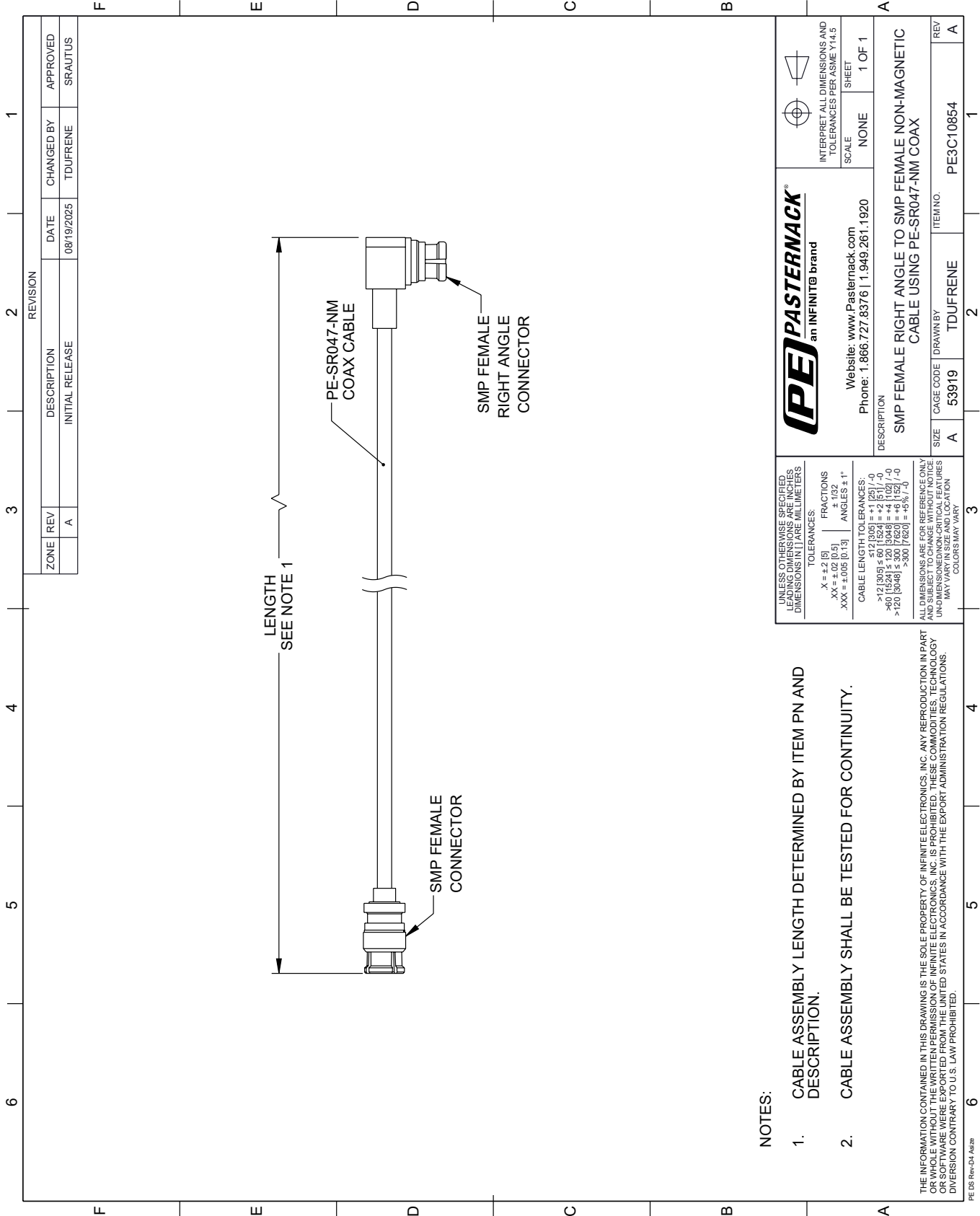
Click the following link (or enter part number in "SEARCH" on website) to obtain additional part information including price, inventory and certifications: [SMP Female Right Angle to SMP Female Non-Magnetic Cable Using PE-SR047-NM Coax PE3C10854](#)

URL: <https://www.pasternack.com/smp-female-right-angle-to-smp-female-non-magnetic-cable-using-pe-sr047-nm-pe3c10854-p.aspx>

The information contained within this document is accurate to the best of our knowledge and representative of the part described herein. It may be necessary to make modifications to the part and/or the documentation of the part in order to implement improvements. Pasternack Enterprises reserves the right to make such changes as required. Unless otherwise stated, all specifications are nominal. Pasternack Enterprises does not make any representation or warranty regarding the suitability of the part described herein for any particular purpose, and Pasternack Enterprises does not assume liability arising out of the use of any part or document.

# PE3C10854 CAD Drawing

SMP Female Right Angle to SMP Female Non-Magnetic Cable Using PE-SR047-NM Coax



REVISION		DATE	CHANGED BY	APPROVED	
ZONE	REV	DESCRIPTION	DATE	CHANGED BY	APPROVED
	A	INITIAL RELEASE	08/19/2025	TDUFRENE	SRAUTUS

- NOTES:**
- CABLE ASSEMBLY LENGTH DETERMINED BY ITEM PN AND DESCRIPTION.
  - CABLE ASSEMBLY SHALL BE TESTED FOR CONTINUITY.

**UNLESS OTHERWISE SPECIFIED, LEADING DIMENSIONS ARE IN INCHES AND TRAILING DIMENSIONS ARE IN MILLIMETERS**

**TOLERANCES:**  
 .X = ±.2 (5)      FRACTIONS ± 1/32  
 .XX = ±.02 (0.5)      ANGLES ± 1°  
 .XXX = ±.005 (0.13)

**CABLE LENGTH TOLERANCES:**  
 >12 (305) ≤ 60 (1524) = ±.1 (25) / -0  
 >60 (1524) ≤ 120 (3048) = ±.4 (102) / -0  
 >120 (3048) ≤ 300 (7620) = ±.6 (152) / -0

**ALL DIMENSIONS ARE FOR REFERENCE ONLY. UNLESS OTHERWISE SPECIFIED, DIMENSIONS ARE FOR THE CENTERLINE OF THE PART. DIMENSIONS OF NON-CRITICAL FEATURES MAY VARY IN SIZE AND LOCATION. COLORS MAY VARY.**

**PE PASTERNAK®**  
 an INFINITE® brand

Website: [www.Pasternack.com](http://www.Pasternack.com)  
 Phone: 1.866.727.8376 | 1.949.261.1920

INTERPRET ALL DIMENSIONS AND TOLERANCES PER ASME Y14.5

SCALE: NONE      SHEET: 1 OF 1

DESCRIPTION: SMP FEMALE RIGHT ANGLE TO SMP FEMALE NON-MAGNETIC CABLE USING PE-SR047-NM COAX

SIZE	CAGE CODE	DRAWN BY	ITEM NO.
A	53919	TDUFRENE	PE3C10854

REV: A

THE INFORMATION CONTAINED IN THIS DRAWING IS THE SOLE PROPERTY OF INFINITE ELECTRONICS, INC. ANY REPRODUCTION IN PART OR WHOLE WITHOUT THE WRITTEN PERMISSION OF INFINITE ELECTRONICS, INC. IS PROHIBITED. THESE COMMODITIES, TECHNOLOGY OR SERVICES ARE EXPORTED FROM THE UNITED STATES IN ACCORDANCE WITH THE EXPORT ADMINISTRATION REGULATIONS. DIVERSION CONTRARY TO U.S. LAW PROHIBITED.

PE DS Rev-04 Add2