

BNC Female Bulkhead to BNC Female Bulkhead Non-Magnetic Cable Using PE-SR141-NM Coax



PE3C10855

Configuration

- Connector 1: BNC Female Bulkhead
- Connector 2: BNC Female Bulkhead
- Cable Type: PE-SR141-NM
- Coax Flex Type: Semi-Rigid

Features

- Max Frequency 4 GHz
- Shielding Effectivity > 165 dB
- 69.5% Phase Velocity
- Copper Jacket
- 500 Mating Cycles

Applications

- General Purpose
- Laboratory Use

Description

Pasternack's PE3C10855 BNC female bulkhead to BNC female bulkhead cable using PE-SR141-NM coax is part of our full line of RF components available for same-day shipping. Pasternack's semi-rigid RF cable assemblies are ideal for high performance applications and can be formed, using proper tooling, to the routing pattern required. This Pasternack BNC to BNC cable assembly has a female to female gender configuration with 50 ohm semi-rigid PE-SR141-NM coax. The PE3C10855 BNC female to BNC female cable assembly operates to 4 GHz. Our RF cable assembly with BNC bulkhead interface allows designers to create external connections on their product enclosures, and can be used in a variety of other rack mount and panel mount applications.

Custom versions of most RF cable assemblies can be built and shipped same day. Custom cable assembly lengths can be obtained by specifying the desired length on the web site at time of order or by contacting a sales representative. Other available RF cable assembly value added services include connector orientation or clocking, heat shrink booting and custom labeling. RF testing can also be performed to document the electrical performance of your cable assembly.

Electrical Specifications

Description	Minimum	Typical	Maximum	Units
Frequency Range	DC		4	GHz
VSWR			1.4:1	
Velocity of Propagation		69.5		%
RF Shielding	165			dB
Operating Voltage (AC)			500	Vrms

Specifications by Frequency

BNC Female Bulkhead to BNC Female Bulkhead Non-Magnetic Cable Using PE-SR141-NM Coax



PE3C10855

Part Number	Length	Description	F1	F2	F3	F4	Units	Weight (lbs)
			Frequency	500	1000	2500	4000	
PE3C10855	Custom Lengths Available	Insertion Loss (Typ.)	0.076	0.11	0.173	0.237	dB/ft	
			0.25	0.37	0.57	0.78	dB/m	
PE3C10855-6	6 inch	Insertion Loss (Typ.)	0.44	0.46	0.49	0.52	dB	0.136
PE3C10855-12	12 inch	Insertion Loss (Typ.)	0.48	0.51	0.58	0.64	dB	0.145
PE3C10855-24	24 inch	Insertion Loss (Typ.)	0.56	0.62	0.75	0.88	dB	0.164
PE3C10855-36	36 inch	Insertion Loss (Typ.)	0.63	0.73	0.92	1.12	dB	0.182
PE3C10855-60	60 inch	Insertion Loss (Typ.)	0.78	0.95	1.27	1.59	dB	0.219

The insertion loss data for the base model does not include loss due to the connectors. Each length includes insertion loss due to the connectors.

Loss due to Connector 1:	0.2 dB
Loss due to Connector 2:	0.2 dB
Base Weight:	0.145 pounds
Additional Weight per Inch:	0.00153 pounds

Mechanical Specifications

Cable Assembly

Width/Diameter	0.5 in [12.7 mm]
Weight	0.145 lbs [65.77 g]

Cable

Cable Type	PE-SR141-NM
Impedance	50 Ohms
Inner Conductor Type	Solid
Inner Conductor Material and Plating	Silver Plated Copper
Dielectric Type	PTFE
Number of Shields	1
Outer Conductor 1 Material and Plating	Copper
Jacket Material	Copper
Repeated Minimum Bend Radius	0.25 in [6.35 mm]

Connectors

Description	Connector 1	Connector 2
Type	BNC Female Bulkhead	BNC Female Bulkhead
Impedance	50 Ohms	50 Ohms
Configuration	Straight	Straight
Mating Cycles	500	500
Contact Material and Plating	Beryllium Copper, Gold over Copper	Beryllium Copper, Gold over Copper
Body Material and Plating	BZ4, Copper-Tin-Zinc Alloy	BZ4, Copper-Tin-Zinc Alloy

Environmental Specifications

Operating Range Temperature	-55 to +125 deg C
-----------------------------	-------------------

BNC Female Bulkhead to BNC Female Bulkhead Non-Magnetic Cable Using PE-SR141-NM Coax



PE3C10855

Compliance Certifications (see [product page](#) for current document)

Plotted and Other Data

Notes:

Typical Performance Data

How to Order

Part Number Configuration:

PE3C10855

- **xx**

uu

Unit of Measure:
cm = Centimeters
<blank> = Inches
Length
Base Number

Example: PE3C10855-12 = 12 inches long cable
PE3C10855-100cm = 100 cm long cable

BNC Female Bulkhead to BNC Female Bulkhead Non-Magnetic Cable Using PE-SR141-NM Coax from Pasternack Enterprises has same day shipment for domestic and International orders. Our RF, microwave and millimeter wave products maintain a 99.4% availability and are part of the broadest selection in the industry.

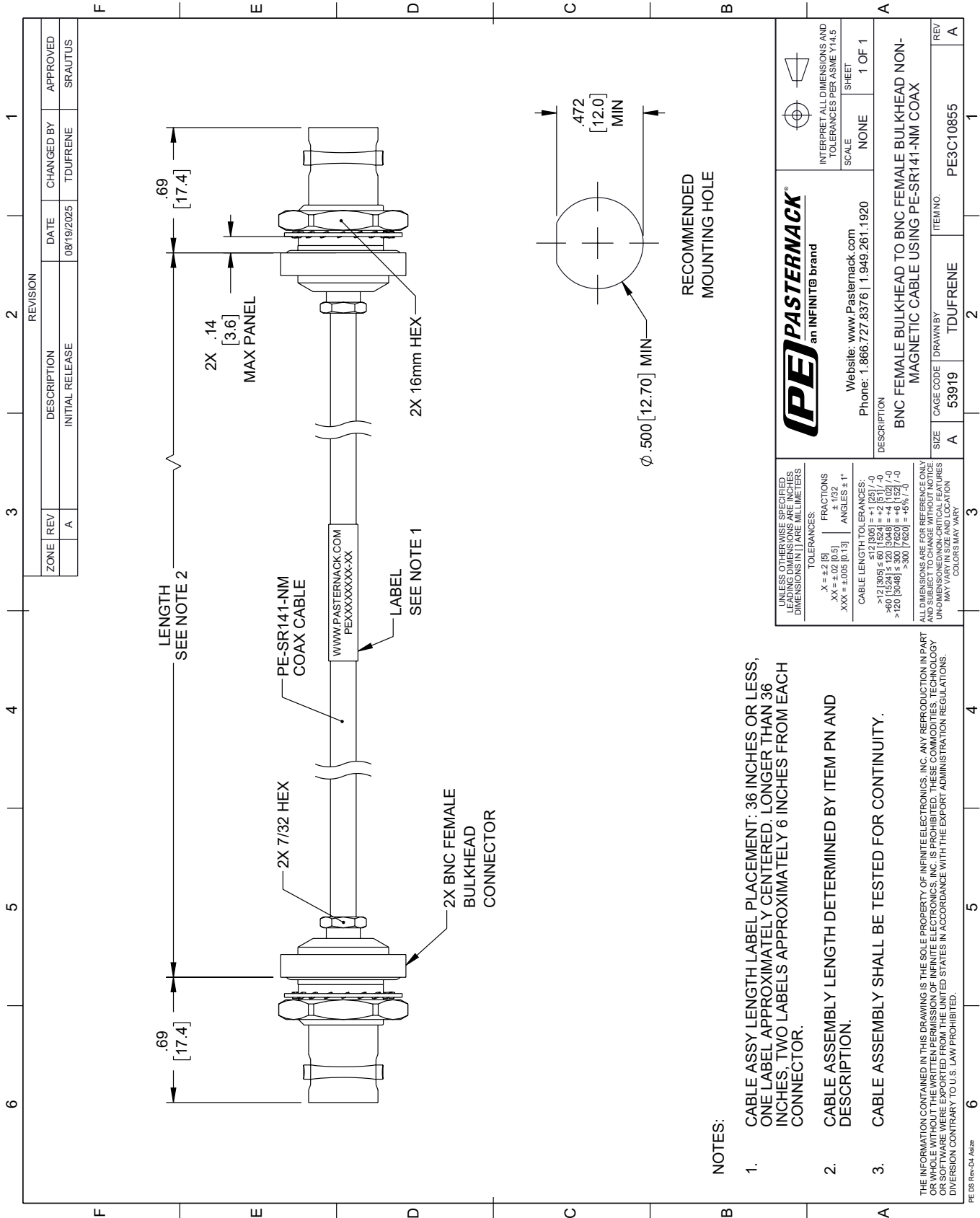
Click the following link (or enter part number in "SEARCH" on website) to obtain additional part information including price, inventory and certifications: [BNC Female Bulkhead to BNC Female Bulkhead Non-Magnetic Cable Using PE-SR141-NM Coax PE3C10855](#)

URL: <https://www.pasternack.com/bnc-jack-bulkhead-to-bnc-jack-bulkhead-non-magnetic-cable-using-pe-sr141-nm-pe3c10855-p.aspx>

The information contained within this document is accurate to the best of our knowledge and representative of the part described herein. It may be necessary to make modifications to the part and/or the documentation of the part in order to implement improvements. Pasternack Enterprises reserves the right to make such changes as required. Unless otherwise stated, all specifications are nominal. Pasternack Enterprises does not make any representation or warranty regarding the suitability of the part described herein for any particular purpose, and Pasternack Enterprises does not assume liability arising out of the use of any part or document.

PE3C10855 CAD Drawing

BNC Female Bulkhead to BNC Female Bulkhead Non-Magnetic Cable Using PE-SR141-NM Coax



NOTES:

1. CABLE ASSY LENGTH LABEL PLACEMENT: 36 INCHES OR LESS, ONE LABEL APPROXIMATELY CENTERED, LONGER THAN 36 INCHES, TWO LABELS APPROXIMATELY 6 INCHES FROM EACH CONNECTOR.
2. CABLE ASSEMBLY LENGTH DETERMINED BY ITEM PN AND DESCRIPTION.
3. CABLE ASSEMBLY SHALL BE TESTED FOR CONTINUITY.

THE INFORMATION CONTAINED IN THIS DRAWING IS THE SOLE PROPERTY OF INFINITE ELECTRONICS, INC. ANY REPRODUCTION IN PART OR WHOLE WITHOUT THE WRITTEN PERMISSION OF INFINITE ELECTRONICS, INC. IS PROHIBITED. THESE COMMODITIES, TECHNOLOGY OR SOFTWARE ARE EXPORTED FROM THE UNITED STATES IN ACCORDANCE WITH THE EXPORT ADMINISTRATION REGULATIONS. DIVERSION CONTRARY TO U.S. LAW PROHIBITED.

		INTERPRET ALL DIMENSIONS AND TOLERANCES PER ASME Y14.5 SCALE NONE SHEET 1 OF 1	
Website: www.Pasternack.com Phone: 1.866.727.8376 1.949.261.1920		REV A ITEM NO. PE3C10855	
DESCRIPTION BNC FEMALE BULKHEAD TO BNC FEMALE BULKHEAD NON-MAGNETIC CABLE USING PE-SR141-NM COAX		CAGE CODE TDUFRENE DRAWN BY TDUFRENE	
SIZE A DRAWING NO. 53919		REV A	

UNLESS OTHERWISE SPECIFIED, LEADING DIMENSIONS ARE IN INCHES. DIMENSIONS IN [] ARE MILLIMETERS.

TOLERANCES:
 .X = ±.2 [5]
 .XX = ±.02 [0.5]
 .XXX = ±.005 [0.13]
 FRACTIONS ± 1/32
 ANGLES ± 1°

CABLE LENGTH TOLERANCES:
 <12 [305] ≤ 60 [1524] = +1 [25] / -0
 >60 [1524] ≤ 120 [3048] = +4 [102] / -0
 >120 [3048] ≤ 300 [7620] = +5% / -0

ALL DIMENSIONS ARE FOR REFERENCE ONLY. UNDIMENSIONED NON-CRITICAL FEATURES MAY VARY IN SIZE AND LOCATION. COLORS MAY VARY.