

SMA Male to SMP Female Non-Magnetic Cable Using PE-SR405-NM Coax



PE3C10858

Configuration

- Connector 1: SMA Male
- Connector 2: SMP Female
- Cable Type: PE-SR405-NM
- Coax Flex Type: Semi-Rigid

Features

- Max Frequency 18 GHz
- Shielding Effectivity > 165 dB
- 69.5% Phase Velocity

Applications

- General Purpose
- Laboratory Use

Description

Pasternack's PE3C10858 SMA male to SMP female cable using PE-SR405-NM coax is part of our full line of RF components available for same-day shipping. Pasternack's semi-rigid RF cable assemblies are ideal for high performance applications and can be formed, using proper tooling, to the routing pattern required. This Pasternack SMA to SMP cable assembly has a male to female gender configuration with 50 ohm semi-rigid PE-SR405-NM coax. The PE3C10858 SMA male to SMP female cable assembly operates to 18 GHz.

Custom versions of most RF cable assemblies can be built and shipped same day. Custom cable assembly lengths can be obtained by specifying the desired length on the web site at time of order or by contacting a sales representative. Other available RF cable assembly value added services include connector orientation or clocking, heat shrink booting and custom labeling. RF testing can also be performed to document the electrical performance of your cable assembly.

Electrical Specifications

Description	Minimum	Typical	Maximum	Units
Frequency Range	DC		18	GHz
VSWR			1.4:1	
Velocity of Propagation		69.5		%
RF Shielding	165			dB

Specifications by Frequency

SMA Male to SMP Female Non-Magnetic Cable Using PE-SR405-NM Coax



PE3C10858

Part Number	Length	Description	F1	F2	F3	F4	F5	Units	Weight (lbs)
			Frequency		1000	2000	4500	9000	
PE3C10858	Custom Lengths Available	Insertion Loss (Typ.)	0.195	0.261	0.426	0.636	0.94	dB/ft	
			0.64	0.86	1.4	2.09	3.09	dB/m	
PE3C10858-6	6 inch	Insertion Loss (Typ.)	0.34	0.39	0.49	0.62	0.81	dB	0.019
PE3C10858-12	12 inch	Insertion Loss (Typ.)	0.44	0.52	0.7	0.94	1.28	dB	0.026
PE3C10858-18	18 inch	Insertion Loss (Typ.)	0.54	0.65	0.92	1.26	1.75	dB	0.034
PE3C10858-24	24 inch	Insertion Loss (Typ.)	0.63	0.78	1.13	1.58	2.22	dB	0.041
PE3C10858-36	36 inch	Insertion Loss (Typ.)	0.83	1.04	1.56	2.21	3.16	dB	0.055

The insertion loss data for the base model does not include loss due to the connectors. Each length includes insertion loss due to the connectors.

Loss due to Connector 1:	0.21 dB
Loss due to Connector 2:	0.03*SQRT(FGHz) dB
Base Weight:	0.026 pounds
Additional Weight per Inch:	0.00117 pounds

Mechanical Specifications

Cable Assembly

Width/Diameter	0.5 in [12.7 mm]
Weight	0.026 lbs [11.79 g]

Cable

Cable Type	PE-SR405-NM
Impedance	50 Ohms
Inner Conductor Type	Solid
Inner Conductor Material and Plating	Copper, Silver
Dielectric Type	PTFE
Outer Conductor 1 Material and Plating	Copper
One Time Minimum Bend Radius	0.125 in [3.18 mm]

Connectors

Description	Connector 1	Connector 2
Type	SMA Male	SMP Female
Impedance	50 Ohms	50 Ohms
Configuration	Straight	Straight
Contact Material and Plating	Gold	Beryllium Copper, Gold
Contact Plating Specification	MIL-G-45294	
Dielectric Type	PTFE	Gold Plated Beryllium Copper
Body Material and Plating	Brass, Gold	Beryllium Copper, Gold
Body Plating Specification	ASTM-B-16	
Coupling Nut Material and Plating	Brass, Gold	
Coupling Nut Plating Specification	ASTM-B-16	

SMA Male to SMP Female Non-Magnetic Cable Using PE-SR405-NM Coax



PE3C10858

Environmental Specifications

Compliance Certifications (see [product page](#) for current document)

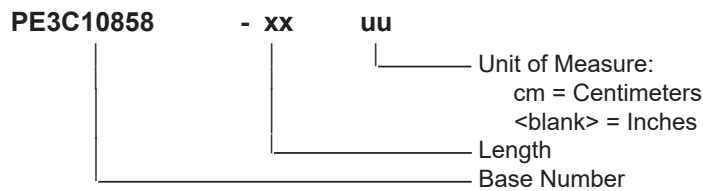
Plotted and Other Data

Notes:

Typical Performance Data

How to Order

Part Number Configuration:



Example: PE3C10858-12 = 12 inches long cable
PE3C10858-100cm = 100 cm long cable

SMA Male to SMP Female Non-Magnetic Cable Using PE-SR405-NM Coax from Pasternack Enterprises has same day shipment for domestic and International orders. Our RF, microwave and millimeter wave products maintain a 99.4% availability and are part of the broadest selection in the industry.

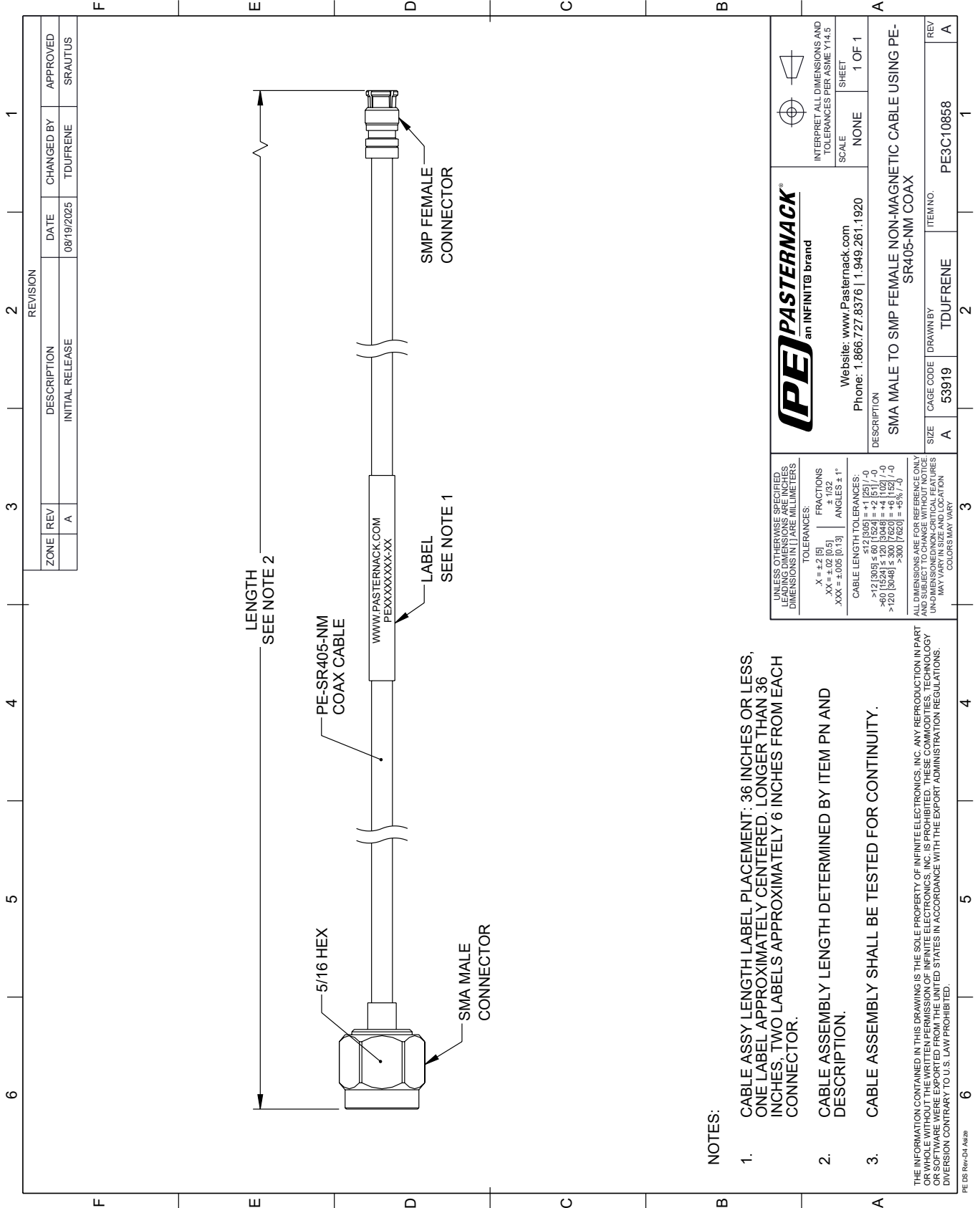
Click the following link (or enter part number in "SEARCH" on website) to obtain additional part information including price, inventory and certifications: [SMA Male to SMP Female Non-Magnetic Cable Using PE-SR405-NM Coax PE3C10858](#)

URL: <https://www.pasternack.com/sma-male-to-smp-female-non-magnetic-cable-using-pe-sr405-nm-pe3c10858-p.aspx>

The information contained within this document is accurate to the best of our knowledge and representative of the part described herein. It may be necessary to make modifications to the part and/or the documentation of the part in order to implement improvements. Pasternack Enterprises reserves the right to make such changes as required. Unless otherwise stated, all specifications are nominal. Pasternack Enterprises does not make any representation or warranty regarding the suitability of the part described herein for any particular purpose, and Pasternack Enterprises does not assume liability arising out of the use of any part or document.

PE3C10858 CAD Drawing

SMA Male to SMP Female Non-Magnetic Cable Using PE-SR405-NM Coax



NOTES:

1. CABLE ASSY LENGTH LABEL PLACEMENT: 36 INCHES OR LESS, ONE LABEL APPROXIMATELY CENTERED, LONGER THAN 36 INCHES, TWO LABELS APPROXIMATELY 6 INCHES FROM EACH CONNECTOR.
2. CABLE ASSEMBLY LENGTH DETERMINED BY ITEM PN AND DESCRIPTION.
3. CABLE ASSEMBLY SHALL BE TESTED FOR CONTINUITY.

THE INFORMATION CONTAINED IN THIS DRAWING IS THE SOLE PROPERTY OF INFINITE ELECTRONICS, INC. ANY REPRODUCTION IN PART OR WHOLE WITHOUT THE WRITTEN PERMISSION OF INFINITE ELECTRONICS, INC. IS PROHIBITED. THESE COMMODITIES, TECHNOLOGY OR SOFTWARE WERE EXPORTED FROM THE UNITED STATES IN ACCORDANCE WITH THE EXPORT ADMINISTRATION REGULATIONS. DIVERSION CONTRARY TO U.S. LAW PROHIBITED.

PE DS Rev-04 Add2

REVISION		DATE	CHANGED BY	APPROVED
ZONE	REV	DESCRIPTION	INITIAL RELEASE	
	A			SRAUTUS

		INTERPRET ALL DIMENSIONS AND TOLERANCES PER ASME Y14.5 SCALE NONE SHEET 1 OF 1	
Website: www.Pasternack.com Phone: 1.866.727.8376 1.949.261.1920			
DESCRIPTION SMA MALE TO SMP FEMALE NON-MAGNETIC CABLE USING PE-SR405-NM COAX			
SIZE	CAGE CODE	DRAWN BY	ITEM NO.
A	53919	TDUFRENE	PE3C10858

UNLESS OTHERWISE SPECIFIED, LEADING DIMENSIONS ARE IN INCHES. DIMENSIONS IN [] ARE MILLIMETERS.

TOLERANCES:
 .X = ±.2 [5]
 .XX = ±.02 [0.5]
 .XXX = ±.005 [0.13]

FRACTIONS
 ± 1/32

ANGLES ± 1°

CABLE LENGTH TOLERANCES:
 >12 [305] ≤ 60 [1524] = ±.1 [25] / -0
 >60 [1524] ≤ 120 [3048] = ±.4 [102] / -0
 >120 [3048] ≤ 300 [7620] = ±.6 [152] / -0
 >300 [7620] = ±.8 [203] / -0

ALL DIMENSIONS ARE FOR REFERENCE ONLY. DIMENSIONS OF CRITICAL FEATURES MAY VARY IN SIZE AND LOCATION. COLORS MAY VARY.