

SMA Male to TNC Male Low Loss Cable Using PE-P142LL Coax with Lock Wire Holes



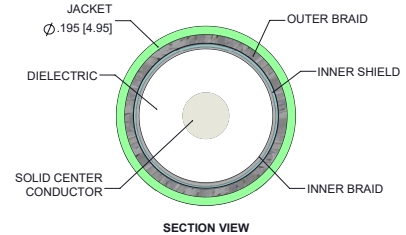
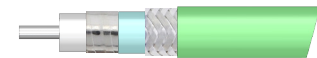
PE3C11114

Configuration

- Connector 1: SMA Male
- Connector 2: TNC Male
- Cable Type: PE-P142LL
- Coax Flex Type: Flexible

Features

- Max Frequency 18 GHz
- 80% Phase Velocity
- Triple Shielded
- FEP Jacket



Applications

- General Purpose
- Laboratory Use

Description

Pasternack's PE3C11114 SMA male to TNC male cable using PE-P142LL coax is part of our full line of RF components available for same-day shipping. Pasternack's flexible RF cable assemblies are ideal for applications where tight bends and flexure are required. This Pasternack SMA to TNC cable assembly has a male to male gender configuration with 50 ohm flexible PE-P142LL coax. The PE3C11114 SMA male to TNC male cable assembly operates to 18 GHz. The triple shielding of this Pasternack cable assembly provides excellent shielding effectiveness.

Custom versions of most RF cable assemblies can be built and shipped same day. Custom cable assembly lengths can be obtained by specifying the desired length on the web site at time of order or by contacting a sales representative. Other available RF cable assembly value added services include connector orientation or clocking, heat shrink booting and custom labeling. RF testing can also be performed to document the electrical performance of your cable assembly.

Electrical Specifications

Description	Minimum	Typical	Maximum	Units
Frequency Range	DC		18	GHz
VSWR			1.5:1	
Velocity of Propagation		80		%
Capacitance		25 [82.02]		pF/ft [pF/m]

Specifications by Frequency

SMA Male to TNC Male Low Loss Cable Using PE-P142LL Coax with Lock Wire Holes



PE3C11114

Part Number	Length	Description	F1	F2	F3	F4	F5	Units	Weight (lbs)
			Frequency					MHz	
PE3C11114	Custom Lengths Available	Insertion Loss (Typ.)	0.075	0.107	0.162	0.233	0.342	dB/ft	
			0.25	0.36	0.54	0.77	1.13	dB/m	
PE3C11114-12	12 In	Insertion Loss (Typ.)	0.16	0.23	0.34	0.48	0.69	dB	0.101
PE3C11114-24	24 In	Insertion Loss (Typ.)	0.23	0.33	0.5	0.71	1.03	dB	0.14
PE3C11114-36	36 In	Insertion Loss (Typ.)	0.31	0.44	0.66	0.94	1.37	dB	0.178
PE3C11114-48	48 In	Insertion Loss (Typ.)	0.38	0.55	0.82	1.18	1.71	dB	0.216
PE3C11114-60	60 In	Insertion Loss (Typ.)	0.46	0.65	0.98	1.41	2.05	dB	0.254

The insertion loss data for the base model does not include loss due to the connectors. Each length includes insertion loss due to the connectors.

Loss due to Connector 1: 0.04*SQRT(FGHz) dB

Loss due to Connector 2: 0.04*SQRT(FGHz) dB

Base Weight: 0.101 pounds

Additional Weight per Inch: 0.00317 pounds

Mechanical Specifications

Cable Assembly

Width/Diameter 0.5 in [12.7 mm]
Weight 0.101 lbs [45.81 g]

Cable

Cable Type PE-P142LL
Impedance 50 Ohms
Inner Conductor Type Solid
Inner Conductor Material and Plating Copper, Silver
Dielectric Type PTFE
Number of Shields 3
Shield Layer 1 Silver Plated Copper Tape
Shield Layer 2 Aluminum Polyester
Shield Layer 3 Silver Plated Copper Wire
Jacket Material FEP, Green
Jacket Diameter 0.195 in [4.95 mm]
Repeated Minimum Bend Radius 0.975 in [24.77 mm]

SMA Male to TNC Male Low Loss Cable Using PE-P142LL Coax with Lock Wire Holes



PE3C11114

Connectors

Description	Connector 1	Connector 2
Type	SMA Male	TNC Male
Specification	MIL-STD-348	
Impedance	50 Ohms	50 Ohms
Configuration	Straight	Straight
Mating Cycles	500	
Contact Material and Plating	Beryllium Copper, Gold over Nickel	Beryllium Copper, Gold over Nickel
Contact Plating Specification	50 µin minimum	
Dielectric Type	PTFE	PTFE
Body Material and Plating	Passivated Stainless Steel	Passivated Stainless Steel
Body Plating Specification	SAE-AMS-2700	
Coupling Nut Material and Plating	Passivated Stainless Steel	Passivated Stainless Steel
Coupling Nut Plating Specification	SAE-AMS-2700	
Hex Size	5/16 inch	
Torque	7 in-lbs 0.79 Nm	12 in-lbs 1.36 Nm

Environmental Specifications

Compliance Certifications (see [product page](#) for current document)

Plotted and Other Data

Notes:

SMA Male to TNC Male Low Loss Cable Using PE-P142LL Coax with Lock Wire Holes

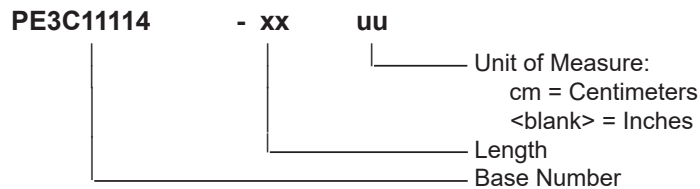


PE3C11114

Typical Performance Data

How to Order

Part Number Configuration:



Example: PE3C11114-12 = 12 inches long cable
PE3C11114-100cm = 100 cm long cable

SMA Male to TNC Male Low Loss Cable Using PE-P142LL Coax with Lock Wire Holes from Pasternack Enterprises has same day shipment for domestic and International orders. Our RF, microwave and millimeter wave products maintain a 99.4% availability and are part of the broadest selection in the industry.

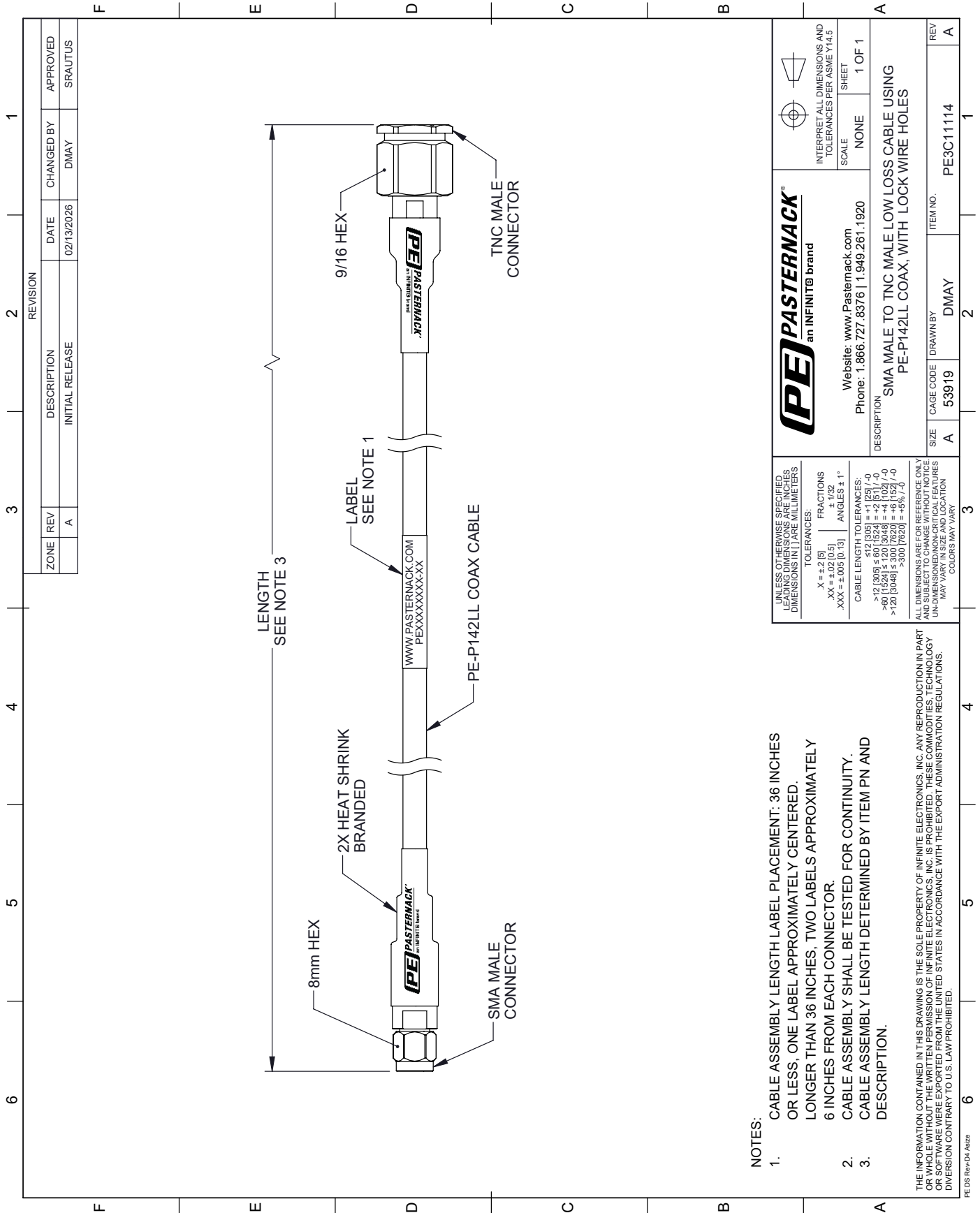
Click the following link (or enter part number in "SEARCH" on website) to obtain additional part information including price, inventory and certifications: [SMA Male to TNC Male Low Loss Cable Using PE-P142LL Coax with Lock Wire Holes PE3C11114](#)

URL: <https://www.pasternack.com/sma-male-to-tnc-male-low-loss-cable-using-pe-p142ll-pe3c11114-p.aspx>

The information contained within this document is accurate to the best of our knowledge and representative of the part described herein. It may be necessary to make modifications to the part and/or the documentation of the part in order to implement improvements. Pasternack Enterprises reserves the right to make such changes as required. Unless otherwise stated, all specifications are nominal. Pasternack Enterprises does not make any representation or warranty regarding the suitability of the part described herein for any particular purpose, and Pasternack Enterprises does not assume liability arising out of the use of any part or document.

PE3C11114 CAD Drawing

SMA Male to TNC Male Low Loss Cable Using PE-P142LL Coax with Lock Wire Holes



NOTES:

1. CABLE ASSEMBLY LENGTH LABEL PLACEMENT: 36 INCHES OR LESS, ONE LABEL APPROXIMATELY CENTERED, LONGER THAN 36 INCHES, TWO LABELS APPROXIMATELY 6 INCHES FROM EACH CONNECTOR.
2. CABLE ASSEMBLY SHALL BE TESTED FOR CONTINUITY.
3. CABLE ASSEMBLY LENGTH DETERMINED BY ITEM PN AND DESCRIPTION.

THE INFORMATION CONTAINED IN THIS DRAWING IS THE SOLE PROPERTY OF INFINITE ELECTRONICS, INC. ANY REPRODUCTION IN PART OR WHOLE WITHOUT THE WRITTEN PERMISSION OF INFINITE ELECTRONICS, INC. IS PROHIBITED. THESE COMMODITIES, TECHNOLOGY OR SOFTWARE WERE EXPORTED FROM THE UNITED STATES IN ACCORDANCE WITH THE EXPORT ADMINISTRATION REGULATIONS. DIVERSION CONTRARY TO U.S. LAW PROHIBITED.

PE DS Rev-D4 A122

INTERPRET ALL DIMENSIONS AND TOLERANCES PER ASME Y14.5			
SCALE	NONE	SHEET	1 OF 1
PE PASTERNAK an INFINIT [®] brand		Website: www.Pasternack.com Phone: 1.866.727.8376 1.949.261.1920	
DESCRIPTION SMA MALE TO TNC MALE LOW LOSS CABLE USING PE-P142LL COAX, WITH LOCK WIRE HOLES			
SIZE	A	CAGE CODE	53919
DRAWN BY	DMAY	ITEM NO.	PE3C11114
REV	A		

UNLESS OTHERWISE SPECIFIED LEADING DIMENSIONS ARE IN INCHES DIMENSIONS IN PAREMILLIMETERS	
TOLERANCES:	
.X = ±.2 [5]	FRACTIONS ± 1/32
.XX = ±.02 [0.5]	ANGLES ± 1°
.XXX = ±.005 [0.13]	
CABLE LENGTH TOLERANCES:	
>12 [305] ≤ 60 [1524] = +1 [25] / -0	
>60 [1524] ≤ 120 [3048] = +4 [102] / -0	
>120 [3048] ≤ 300 [7620] = +5 [127] / -0	
>300 [7620] = +5 [127] / -0	
ALL DIMENSIONS ARE FOR REFERENCE ONLY UNLESS OTHERWISE SPECIFIED. DIMENSIONS ON CRITICAL FEATURES MAY VARY IN SIZE AND LOCATION. COLORS MAY VARY.	

REVISION			
ZONE	REV	DESCRIPTION	DATE
	A	INITIAL RELEASE	02/13/2026
		CHANGED BY	DMAY
		APPROVED	SRAUTUS