

SMP Female Right Angle to SMA Male Right Angle Cable Using RG178 Coax with HeatShrink



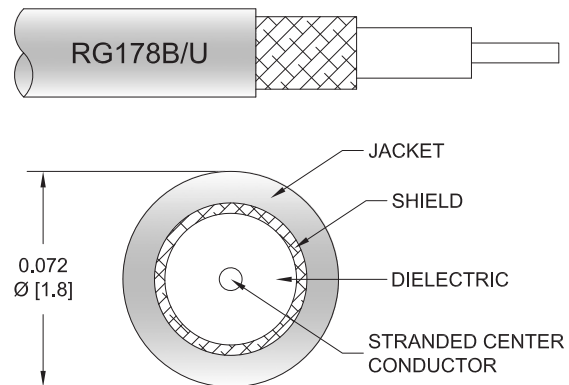
PE3C1306/HS

Configuration

- Connector 1: SMP Female Right Angle
- Connector 2: SMA Male Right Angle
- Cable Type: RG178
- Coax Flex Type: Flexible

Features

- Max Frequency 3 GHz
- 70% Phase Velocity
- FEP Jacket



Applications

- General Purpose
- Laboratory Use

Description

Pasternack's PE3C1306/HS SMP female right angle to SMA male right angle cable using RG178 coax is part of our full line of RF components available for same-day shipping. Pasternack's flexible RF cable assemblies are ideal for applications where tight bends and flexure are required. This Pasternack SMP to SMA cable assembly has a female to male gender configuration with 50 ohm flexible RG178 coax. The PE3C1306/HS SMP female to SMA male cable assembly operates to 3 GHz. The right angle SMP and right angle SMA interfaces on the RG178 cable allow for easier connections in tight spaces.

Custom versions of most RF cable assemblies can be built and shipped same day. Custom cable assembly lengths can be obtained by specifying the desired length on the web site at time of order or by contacting a sales representative. Other available RF cable assembly value added services include connector orientation or clocking, heat shrink booting and custom labeling. RF testing can also be performed to document the electrical performance of your cable assembly.

Electrical Specifications

Description	Minimum	Typical	Maximum	Units
Frequency Range	DC		3	GHz
VSWR			1.4:1	
Velocity of Propagation		70		%
Capacitance		29.4 [96.46]		pF/ft [pF/m]

Specifications by Frequency

SMP Female Right Angle to SMA Male Right Angle
Cable Using RG178 Coax with HeatShrink



PE3C1306/HS

Part Number	Length	Description	F1	F2	F3	F4	F5	Units	Weight (lbs)
			Frequency		100	250	500	1000	
PE3C1306/HS	Custom Lengths Available	Insertion Loss (Typ.)	0.14	0.21	0.31	0.44	0.784	dB/ft	
			0.46	0.69	1.01	1.46	2.58	dB/m	
PE3C1306/HS-6	6 inch	Insertion Loss (Typ.)	0.47	0.51	0.56	0.63	0.8	dB	0.025
PE3C1306/HS-9	9 inch	Insertion Loss (Typ.)	0.51	0.56	0.63	0.74	0.99	dB	0.026
PE3C1306/HS-12	12 inch	Insertion Loss (Typ.)	0.54	0.61	0.71	0.85	1.19	dB	0.027
PE3C1306/HS-24	24 inch	Insertion Loss (Typ.)	0.68	0.82	1.02	1.29	1.97	dB	0.033
PE3C1306/HS-36	36 inch	Insertion Loss (Typ.)	0.82	1.03	1.32	1.74	2.76	dB	0.038

The insertion loss data for the base model does not include loss due to the connectors. Each length includes insertion loss due to the connectors.

Loss due to Connector 1: 0.2 dB
 Loss due to Connector 2: 0.2 dB
 Base Weight: 0.027 pounds
 Additional Weight per Inch: 0.00042 pounds

Mechanical Specifications

Cable Assembly

Width/Diameter: 0.5 in [12.7 mm]
 Weight: 0.33 lbs [149.69 g]

Cable

Cable Type: RG178
 Impedance: 50 Ohms
 Inner Conductor Type: Stranded
 Inner Conductor Material and Plating: Copper Clad Steel, Silver
 Dielectric Type: PTFE
 Number of Shields: 1
 Shield Layer 1: Silver Plated Copper Braid
 Jacket Material: FEP, Tan
 Jacket Diameter: 0.072 in [1.83 mm]
 Repeated Minimum Bend Radius: 0.4 in [10.16 mm]

SMP Female Right Angle to SMA Male Right Angle
Cable Using RG178 Coax with HeatShrink



PE3C1306/HS

Connectors

Description	Connector 1	Connector 2
Type	SMP Female Right Angle	SMA Male Right Angle
Specification	MIL-STD-348A	MIL-STD-348A
Impedance	50 Ohms	50 Ohms
Configuration	Right Angle	Right Angle
Contact Material and Plating	Beryllium Copper, Gold	Brass, Gold
Contact Plating Specification	MIL-DTL-45204	50 µin minimum
Dielectric Type	PTFE	PTFE
Outer Conductor Material and Plating	Beryllium Copper, Gold	
Outer Conductor Plating Specification	MIL-DTL-45204	
Body Material and Plating	Brass, Gold	Brass, Nickel
Body Plating Specification	MIL-DTL-45204	100 µin minimum
Coupling Nut Material and Plating		Brass, Nickel
Coupling Nut Plating Specification		100 µin minimum
Hex Size		5/16 inch
Torque		3 in-lbs 0.34 Nm

Environmental Specifications

Operating Range Temperature -55 to +155 deg C

Compliance Certifications (see [product page](#) for current document)

Plotted and Other Data

Notes:

SMP Female Right Angle to SMA Male Right Angle Cable Using RG178 Coax with HeatShrink



PE3C1306/HS

Typical Performance Data

How to Order

Part Number Configuration:

PE3C1306/HS - xx uu



Example: PE3C1306/HS-12 = 12 inches long cable
PE3C1306/HS-100cm = 100 cm long cable

SMP Female Right Angle to SMA Male Right Angle Cable Using RG178 Coax with HeatShrink from Pasternack Enterprises has same day shipment for domestic and International orders. Our RF, microwave and millimeter wave products maintain a 99.4% availability and are part of the broadest selection in the industry.

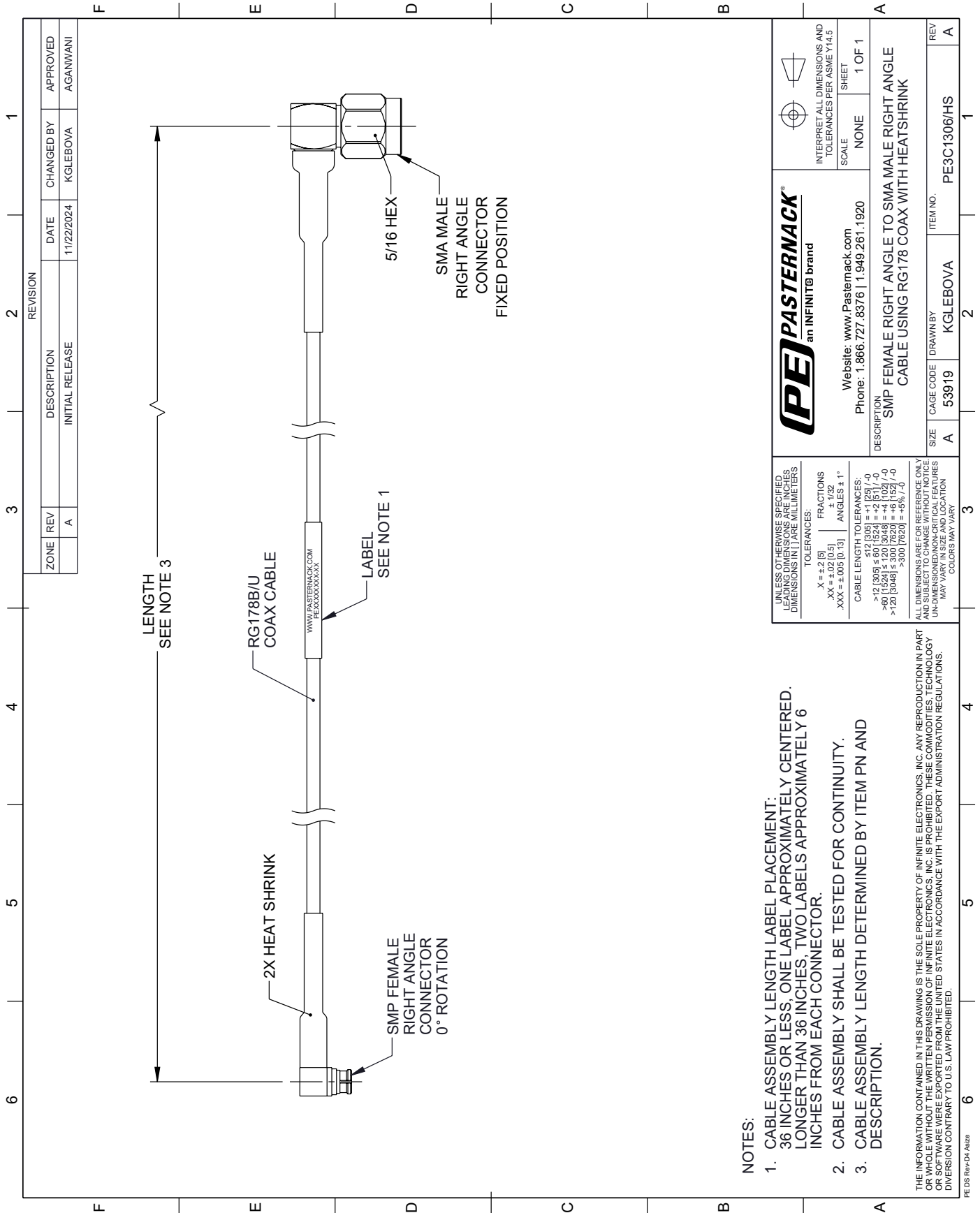
Click the following link (or enter part number in "SEARCH" on website) to obtain additional part information including price, inventory and certifications: [SMP Female Right Angle to SMA Male Right Angle Cable Using RG178 Coax with HeatShrink PE3C1306/HS](#)

URL: <https://www.pasternack.com/smp-female-right-angle-to-sma-male-cable-using-rg178-with-heatshrink-pe3c1306-hs-p.aspx>

The information contained within this document is accurate to the best of our knowledge and representative of the part described herein. It may be necessary to make modifications to the part and/or the documentation of the part in order to implement improvements. Pasternack Enterprises reserves the right to make such changes as required. Unless otherwise stated, all specifications are nominal. Pasternack Enterprises does not make any representation or warranty regarding the suitability of the part described herein for any particular purpose, and Pasternack Enterprises does not assume liability arising out of the use of any part or document.

PE3C1306/HS CAD Drawing

SMP Female Right Angle to SMA Male Right Angle Cable Using RG178 Coax with HeatShrink



NOTES:

1. CABLE ASSEMBLY LENGTH LABEL PLACEMENT: 36 INCHES OR LESS, ONE LABEL APPROXIMATELY CENTERED. LONGER THAN 36 INCHES, TWO LABELS APPROXIMATELY 6 INCHES FROM EACH CONNECTOR.
2. CABLE ASSEMBLY SHALL BE TESTED FOR CONTINUITY.
3. CABLE ASSEMBLY LENGTH DETERMINED BY ITEM PN AND DESCRIPTION.

THE INFORMATION CONTAINED IN THIS DRAWING IS THE SOLE PROPERTY OF INFINITE ELECTRONICS, INC. ANY REPRODUCTION IN PART OR WHOLE WITHOUT THE WRITTEN PERMISSION OF INFINITE ELECTRONICS, INC. IS PROHIBITED. THESE COMMODITIES, TECHNOLOGY OR SOFTWARE WERE EXPORTED FROM THE UNITED STATES IN ACCORDANCE WITH THE EXPORT ADMINISTRATION REGULATIONS. DIVERSION CONTRARY TO U.S. LAW PROHIBITED.

<p>UNLESS OTHERWISE SPECIFIED LEADING DIMENSIONS ARE INCHES DIMENSIONS IN PAREMILLIMETERS</p> <p>TOLERANCES:</p> <p>X = ±.2 [5] FRACTIONS ± 1/32 .XX = ±.02 [0.5] ANGLES ± 1° .XXX = ±.005 [0.13]</p> <p>CABLE LENGTH TOLERANCES:</p> <p>>12 [305] ≤ 60 [1524] = +1 [25] / -0 >60 [1524] ≤ 120 [3048] = +4 [102] / -0 >120 [3048] ≤ 300 [7620] = +5 [127] / -0 >300 [7620] = +5 [127] / -0</p> <p>ALL DIMENSIONS ARE FOR REFERENCE ONLY UNLESS OTHERWISE SPECIFIED. UNDIMENSIONED CRITICAL FEATURES MAY VARY IN SIZE AND LOCATION. COLORS MAY VARY.</p>		<p>INTERPRET ALL DIMENSIONS AND TOLERANCES PER ASME Y14.5</p> <p>SCALE NONE</p> <p>SHEET 1 OF 1</p>	
<p>Website: www.Pasternack.com</p> <p>Phone: 1.866.727.8376 1.949.261.1920</p>		<p>DESCRIPTION</p> <p>SMP FEMALE RIGHT ANGLE TO SMA MALE RIGHT ANGLE CABLE USING RG178 COAX WITH HEATSHRINK</p>	
<p>REV A</p>	<p>DATE 11/22/2024</p>	<p>CHANGED BY KGLEBOVA</p>	<p>APPROVED AGANWANI</p>
<p>ZONE</p>	<p>DESCRIPTION INITIAL RELEASE</p>	<p>ITEM NO. PE3C1306/HS</p>	<p>REV A</p>