

## MMCX Plug Right Angle to MCX Plug Cable Using RG178 Coax with HeatShrink



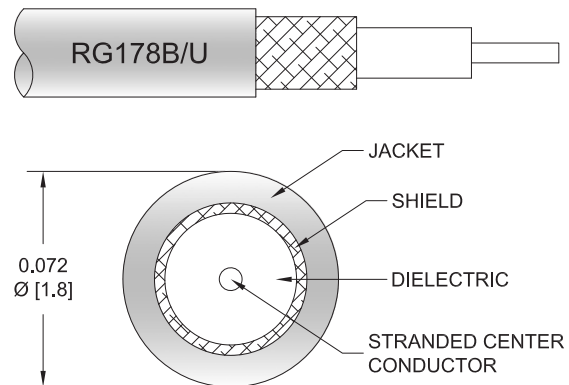
### PE3C1478/HS

#### Configuration

- Connector 1: MMCX Plug Right Angle
- Connector 2: MCX Plug
- Cable Type: RG178
- Coax Flex Type: Flexible

#### Features

- Max Frequency 3 GHz
- 70% Phase Velocity
- FEP Jacket



#### Applications

- General Purpose
- Laboratory Use

#### Description

Pasternack's PE3C1478/HS MMCX plug right angle to MCX plug cable using RG178 coax is part of our full line of RF components available for same-day shipping. Pasternack's flexible RF cable assemblies are ideal for applications where tight bends and flexure are required. This Pasternack MMCX to MCX cable assembly has a plug to plug gender configuration with 50 ohm flexible RG178 coax. The PE3C1478/HS MMCX plug to MCX plug cable assembly operates to 3 GHz. The right angle MMCX interface on the RG178 cable allows for easier connections in tight spaces.

Custom versions of most RF cable assemblies can be built and shipped same day. Custom cable assembly lengths can be obtained by specifying the desired length on the web site at time of order or by contacting a sales representative. Other available RF cable assembly value added services include connector orientation or clocking, heat shrink booting and custom labeling. RF testing can also be performed to document the electrical performance of your cable assembly.

#### Electrical Specifications

Description	Minimum	Typical	Maximum	Units
Frequency Range	DC		3	GHz
VSWR			1.4:1	
Velocity of Propagation		70		%
Capacitance		29.4 [96.46]		pF/ft [pF/m]
Operating Voltage (AC)			170	V <sub>rms</sub>

#### Specifications by Frequency

## MMCX Plug Right Angle to MCX Plug Cable Using RG178 Coax with HeatShrink



### PE3C1478/HS

Part Number	Length	Description	F1	F2	F3	F4	F5	Units	Weight (lbs)
			Frequency		100	250	500	1000	
PE3C1478/HS	Custom Lengths Available	Insertion Loss (Typ.)	0.14	0.21	0.31	0.44	0.784	dB/ft	
			0.46	0.69	1.01	1.46	2.58	dB/m	
PE3C1478/HS-6	6 inch	Insertion Loss (Typ.)	0.67	0.71	0.76	0.83	1	dB	0.016
PE3C1478/HS-9	9 inch	Insertion Loss (Typ.)	0.71	0.76	0.83	0.94	1.19	dB	0.017
PE3C1478/HS-12	12 inch	Insertion Loss (Typ.)	0.74	0.81	0.91	1.05	1.39	dB	0.018
PE3C1478/HS-24	24 inch	Insertion Loss (Typ.)	0.88	1.02	1.22	1.49	2.17	dB	0.024
PE3C1478/HS-36	36 inch	Insertion Loss (Typ.)	1.02	1.23	1.52	1.94	2.96	dB	0.029

The insertion loss data for the base model does not include loss due to the connectors. Each length includes insertion loss due to the connectors.

Loss due to Connector 1:	0.2 dB
Loss due to Connector 2:	0.4 dB
Base Weight:	0.018 pounds
Additional Weight per Inch:	0.00042 pounds

### Mechanical Specifications

#### Cable Assembly

Width/Diameter	0.5 in [12.7 mm]
Weight	0.02 lbs [9.07 g]

#### Cable

Cable Type	RG178
Impedance	50 Ohms
Inner Conductor Type	Stranded
Inner Conductor Material and Plating	Copper Clad Steel, Silver
Dielectric Type	PTFE
Number of Shields	1
Shield Layer 1	Silver Plated Copper Braid
Jacket Material	FEP, Tan
Jacket Diameter	0.072 in [1.83 mm]
Repeated Minimum Bend Radius	0.4 in [10.16 mm]

MMCX Plug Right Angle to MCX Plug Cable  
Using RG178 Coax with HeatShrink



**PE3C1478/HS**

**Connectors**

Description	Connector 1	Connector 2
Type	MMCX Plug Right Angle	MCX Plug
Specification	BS EN 122340	CECC 22220
Impedance	50 Ohms	50 Ohms
Configuration	Right Angle	Straight
Mating Cycles		500
Contact Material and Plating	Brass, Gold	Brass, Gold
Contact Plating Specification	30 µin minimum	30 µin minimum
Dielectric Type	PTFE	PTFE
Body Material and Plating	Brass, Gold	Brass, Nickel
Body Plating Specification	3 µin minimum	2.5 µin minimum

**Environmental Specifications**

Operating Range Temperature -55 to +155 deg C

**Compliance Certifications** (see [product page](#) for current document)

**Plotted and Other Data**

Notes:

## MMCX Plug Right Angle to MCX Plug Cable Using RG178 Coax with HeatShrink



### PE3C1478/HS

#### Typical Performance Data

#### How to Order

Part Number Configuration:

**PE3C1478/HS - xx uu**

Unit of Measure:  
cm = Centimeters  
<blank> = Inches

Length

Base Number

Example: PE3C1478/HS-12 = 12 inches long cable  
PE3C1478/HS-100cm = 100 cm long cable

MMCX Plug Right Angle to MCX Plug Cable Using RG178 Coax with HeatShrink from Pasternack Enterprises has same day shipment for domestic and International orders. Our RF, microwave and millimeter wave products maintain a 99.4% availability and are part of the broadest selection in the industry.

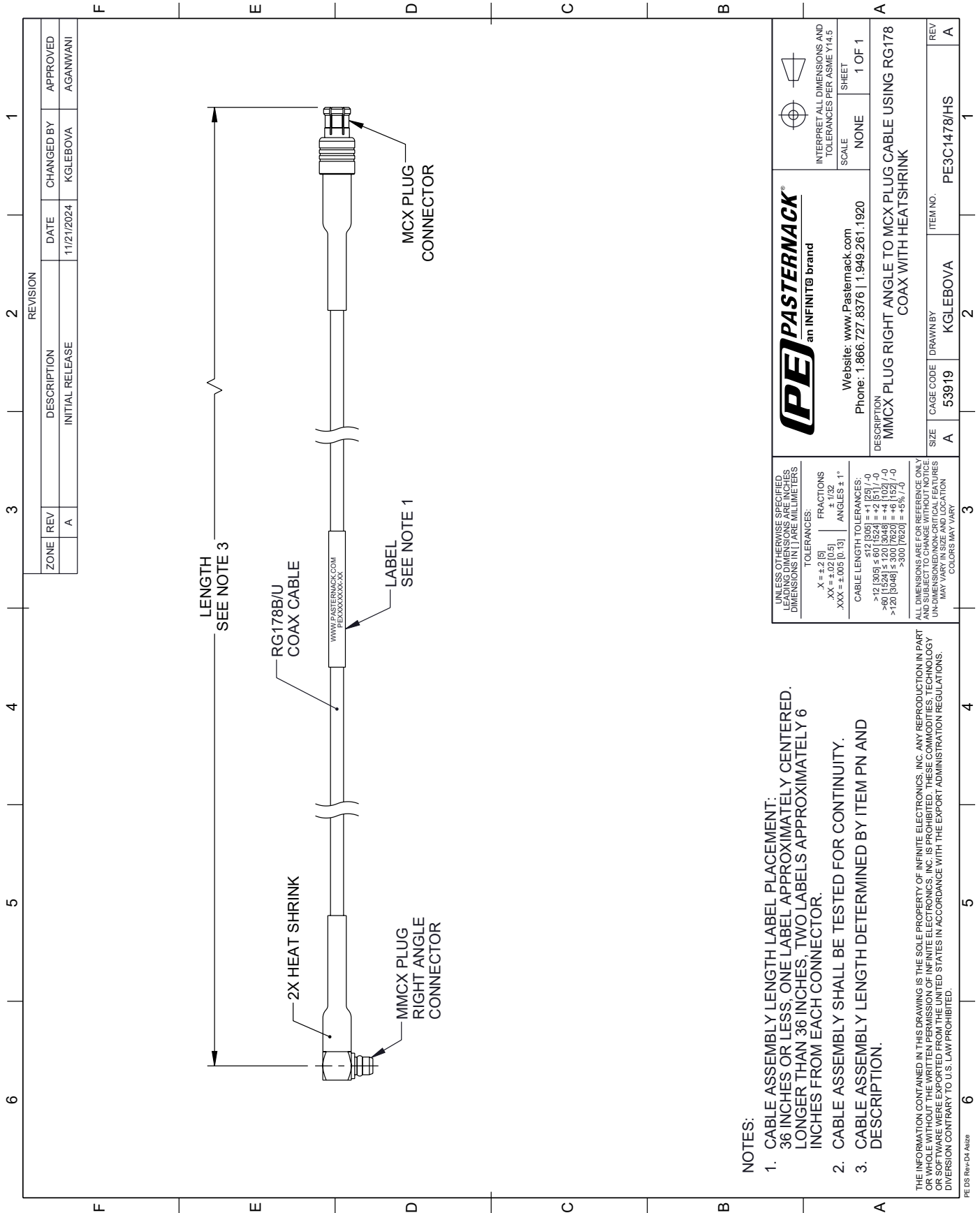
Click the following link (or enter part number in "SEARCH" on website) to obtain additional part information including price, inventory and certifications: [MMCX Plug Right Angle to MCX Plug Cable Using RG178 Coax with HeatShrink PE3C1478/HS](https://www.pasternack.com/mmcx-plug-right-angle-to-mcx-plug-cable-using-rg178-with-heatshrink-pe3c1478-hs-p.aspx)

URL: <https://www.pasternack.com/mmcx-plug-right-angle-to-mcx-plug-cable-using-rg178-with-heatshrink-pe3c1478-hs-p.aspx>

The information contained within this document is accurate to the best of our knowledge and representative of the part described herein. It may be necessary to make modifications to the part and/or the documentation of the part in order to implement improvements. Pasternack Enterprises reserves the right to make such changes as required. Unless otherwise stated, all specifications are nominal. Pasternack Enterprises does not make any representation or warranty regarding the suitability of the part described herein for any particular purpose, and Pasternack Enterprises does not assume liability arising out of the use of any part or document.

# PE3C1478/HS CAD Drawing

MMCX Plug Right Angle to MCX Plug Cable Using RG178 Coax with HeatShrink



**NOTES:**

1. CABLE ASSEMBLY LENGTH LABEL PLACEMENT: 36 INCHES OR LESS, ONE LABEL APPROXIMATELY CENTERED, LONGER THAN 36 INCHES, TWO LABELS APPROXIMATELY 6 INCHES FROM EACH CONNECTOR.
2. CABLE ASSEMBLY SHALL BE TESTED FOR CONTINUITY.
3. CABLE ASSEMBLY LENGTH DETERMINED BY ITEM PN AND DESCRIPTION.

THE INFORMATION CONTAINED IN THIS DRAWING IS THE SOLE PROPERTY OF INFINITE ELECTRONICS, INC. ANY REPRODUCTION IN PART OR WHOLE WITHOUT THE WRITTEN PERMISSION OF INFINITE ELECTRONICS, INC. IS PROHIBITED. THESE COMMODITIES, TECHNOLOGY OR SOFTWARE WERE EXPORTED FROM THE UNITED STATES IN ACCORDANCE WITH THE EXPORT ADMINISTRATION REGULATIONS. DIVERSION CONTRARY TO U.S. LAW PROHIBITED.

<p>UNLESS OTHERWISE SPECIFIED LEADING DIMENSIONS ARE INCHES DIMENSIONS IN PAREMILLIMETERS</p> <p>TOLERANCES:</p> <p>X = ±.2 [5]      FRACTIONS ± 1/32                  .XX = ±.02 [0.5]      ANGLES ± 1°                  .XXX = ±.005 [0.13]</p> <p>CABLE LENGTH TOLERANCES:                  &gt;12 [305] ≤ 60 [1524] = +1 [25] / -0                  &gt;60 [1524] ≤ 120 [3048] = +4 [102] / -0                  &gt;120 [3048] ≤ 300 [7620] = +5 [127] / -0                  &gt;300 [7620] = +5 [127] / -0</p> <p>ALL DIMENSIONS ARE FOR REFERENCE ONLY UNLESS OTHERWISE SPECIFIED. DIMENSIONS ON NON-CRITICAL FEATURES MAY VARY IN SIZE AND LOCATION. COLORS MAY VARY.</p>		<p><b>PE PASTERNAK</b> an INFINITTE brand</p> <p>Website: <a href="http://www.Pasternack.com">www.Pasternack.com</a>                  Phone: 1.866.727.8376   1.949.261.1920</p>		<p>INTERPRET ALL DIMENSIONS AND TOLERANCES PER ASME Y14.5</p> <p>SCALE: NONE                  SHEET: 1 OF 1</p>	
<p>DESCRIPTION: MMCX PLUG RIGHT ANGLE TO MCX PLUG CABLE USING RG178 COAX WITH HEATSHRINK</p>		<p>SIZE: A</p>	<p>ITEM NO.: PE3C1478/HS</p>		
<p>ZONE: A</p>	<p>REV: A</p>	<p>REVISION: INITIAL RELEASE</p>	<p>DATE: 11/21/2024</p>	<p>CHANGED BY: KGLEBOVA</p>	<p>APPROVED: AGANWANI</p>