

Waterproof IP68 SMA Male (Plug) to SMA Male (Plug) Low Loss Cable Using LMR-240 Coax with Times Microwave Components



PE3C1625/WP

Configuration

- Connector 1: SMA Male
- Connector 2: SMA Male
- Cable Type: LMR-240
- Coax Flex Type: Flexible

Features

- Max Frequency 6 GHz
- Shielding Effectivity > 90 dB
- 84% Phase Velocity
- Double Shielded
- PE Jacket
- Silicone Connector Boot
- IP68 Rated



Applications

- General Purpose
- Laboratory Use

Description

The Pasternack PE3C1625/WP is a weatherproof low loss cable assembly that comes with SMA male connection with weatherproof boot on one end and SMA male with weatherproof boot on the other. Pasternack's RF coaxial cable assembly products are designed for typical use, production, laboratory test and measurement, defense/military, aerial antenna towers, etc. The low loss cable has a 50 Ohm impedance and is specifically ready for quicker shipment than most in the industry can provide.

This weatherproof low loss RF cable assembly operates at a maximum frequency of 6 GHz. Our RF cable assembly has a PE jacket with 0.240 inches diameter. The SMA male to SMA male cable assembly PE3C1625/WP is built with LMR-240 coax, which has a flexible design. This RF cable assembly with 0.5 inches diameter has copper as cable's inner conducting material and PE (F) dielectric type. The weatherproof boot low loss cable is reusable and can withstand elements including extreme temperature. Additional dimensions, specifications, and CAD drawings for this PE3C1625/WP low loss RF cable are available on our downloadable PDF datasheet.

Pasternack stocks a wide selection of weatherproof low loss cable assemblies that ship the same business day as ordered from our warehouse. Make your online purchase right now to take advantage of our same-day shipping. For further information on similar products, our expert technical support and knowledgeable sales team can help you get the ideal SMA male to SMA male cable assembly as per your requirements.

Electrical Specifications

| Description | Minimum | Typical | Maximum | Units |
|-------------------------------|---------|-------------|---------|-----------------------|
| Frequency Range | DC | | 6 | GHz |
| VSWR | | | 1.4:1 | |
| Velocity of Propagation | | 84 | | % |
| RF Shielding | 90 | | | dB |
| Capacitance | | 24.2 [79.4] | | pF/ft [pF/m] |
| Inductance | | 0.06 [0.2] | | uH/ft [uH/m] |
| DC Resistance Inner Conductor | | 3.2 [10.5] | | Ohms/1000ft [Ohms/Km] |

Waterproof IP68 SMA Male (Plug) to SMA Male (Plug) Low Loss Cable Using LMR-240 Coax with Times Microwave Components



PE3C1625/WP

Electrical Specifications

| Description | Minimum | Typical | Maximum | Units |
|--------------------------------------|---------|--------------|---------|-----------------------|
| DC Resistance Outer Conductor | | 3.89 [12.76] | | Ohms/1000ft [Ohms/Km] |
| Dielectric Withstanding Voltage (DC) | | | 1,500 | Vdc |
| Jacket Spark | | | 5,000 | Vrms |

Specifications by Frequency

| Part Number | Length | Description | F1 | F2 | F3 | F4 | F5 | Units | Weight (lbs) |
|----------------|--------------------------|-----------------------|-----------|-------|-------|-------|-------|-------|--------------|
| | | | Frequency | | | | | | |
| PE3C1625/WP | Custom Lengths Available | Insertion Loss (Typ.) | 0.039 | 0.055 | 0.079 | 0.129 | 0.204 | dB/ft | |
| | | | 0.13 | 0.19 | 0.26 | 0.43 | 0.67 | dB/m | |
| PE3C1625/WP-12 | 12 Inch | Insertion Loss (Typ.) | 0.24 | 0.26 | 0.28 | 0.33 | 0.41 | dB | 1.075 |
| PE3C1625/WP-24 | 24 Inch | Insertion Loss (Typ.) | 0.28 | 0.31 | 0.36 | 0.46 | 0.61 | dB | 1.108 |
| PE3C1625/WP-36 | 36 Inch | Insertion Loss (Typ.) | 0.32 | 0.37 | 0.44 | 0.59 | 0.82 | dB | 1.141 |
| PE3C1625/WP-48 | 48 Inch | Insertion Loss (Typ.) | 0.36 | 0.42 | 0.52 | 0.72 | 1.02 | dB | 1.174 |
| PE3C1625/WP-60 | 60 Inch | Insertion Loss (Typ.) | 0.4 | 0.48 | 0.6 | 0.85 | 1.22 | dB | 1.207 |

The insertion loss data for the base model does not include loss due to the connectors. Each length includes insertion loss due to the connectors.

| | |
|-----------------------------|----------------|
| Loss due to Connector 1: | 0.1 dB |
| Loss due to Connector 2: | 0.1 dB |
| Base Weight: | 1.075 pounds |
| Additional Weight per Inch: | 0.00275 pounds |

Mechanical Specifications

Cable Assembly

| | |
|----------------|----------------------|
| Width/Diameter | 0.5 in [12.7 mm] |
| Weight | 1.075 lbs [487.61 g] |

Cable

| | |
|--------------------------------------|------------------------|
| Cable Type | LMR-240 |
| Impedance | 50 Ohms |
| Inner Conductor Type | Solid |
| Inner Conductor Material and Plating | Copper |
| Dielectric Type | PE (F) |
| Number of Shields | 2 |
| Shield Layer 1 | Aluminum Tape |
| Shield Layer 2 | Tinned Copper Braid |
| Jacket Material | PE |
| Jacket Diameter | 0.24 in [6.1 mm] |
| One Time Minimum Bend Radius | 0.75 in [19.05 mm] |
| Repeated Minimum Bend Radius | 2.5 in [63.5 mm] |
| Bending Moment | 0.25 lbs-ft [0.34 N-m] |
| Flat Plate Crush | 20 lbs/in [0.36 Kg/mm] |
| Tensile Strength | 80 lbs [36.29 Kg] |

Waterproof IP68 SMA Male (Plug) to SMA Male (Plug) Low Loss Cable Using LMR-240 Coax with Times Microwave Components



PE3C1625/WP

Connectors

| Description | Connector 1 | Connector 2 |
|--------------------------------------|----------------------------------|----------------------------------|
| Type | SMA Male | SMA Male |
| Option | Weatherproof Boot | Weatherproof Boot |
| Specification | MIL-STD-348 | MIL-STD-348 |
| Impedance | 50 Ohms | 50 Ohms |
| Configuration | Straight | Straight |
| Contact Material and Plating | Beryllium Copper, Gold | Beryllium Copper, Gold |
| Contact Plating Specification | ASTM B488 | ASTM B488 |
| Dielectric Type | PTFE | PTFE |
| Outer Conductor Material and Plating | Passivated Stainless Steel, Gold | Passivated Stainless Steel, Gold |
| Body Material and Plating | Passivated Stainless Steel, Gold | Passivated Stainless Steel, Gold |
| Body Plating Specification | SAE-AMS-2700 | SAE-AMS-2700 |
| Coupling Nut Material and Plating | Passivated Stainless Steel | Passivated Stainless Steel |
| Coupling Nut Plating Specification | SAE-AMS-2700 | SAE-AMS-2700 |
| Boot Material | Silicone | Silicone |

Environmental Specifications

Ingress Protection (IP) Rating IP68

Compliance Certifications (see [product page](#) for current document)

Plotted and Other Data

Notes:
Values at 25°C, sea level.

Waterproof IP68 SMA Male (Plug) to SMA Male (Plug) Low Loss Cable Using LMR-240 Coax with Times Microwave Components

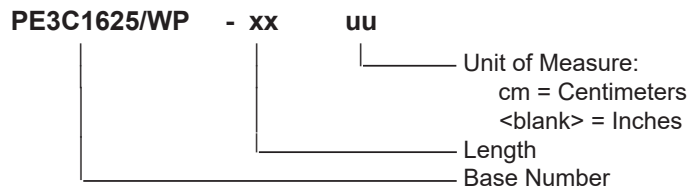


PE3C1625/WP

Typical Performance Data

How to Order

Part Number Configuration:



Example: PE3C1625/WP-12 = 12 inches long cable
PE3C1625/WP-100cm = 100 cm long cable

Waterproof IP68 SMA Male (Plug) to SMA Male (Plug) Low Loss Cable Using LMR-240 Coax with Times Microwave Components from Pasternack Enterprises has same day shipment for domestic and International orders. Our RF, microwave and millimeter wave products maintain a 99.4% availability and are part of the broadest selection in the industry.

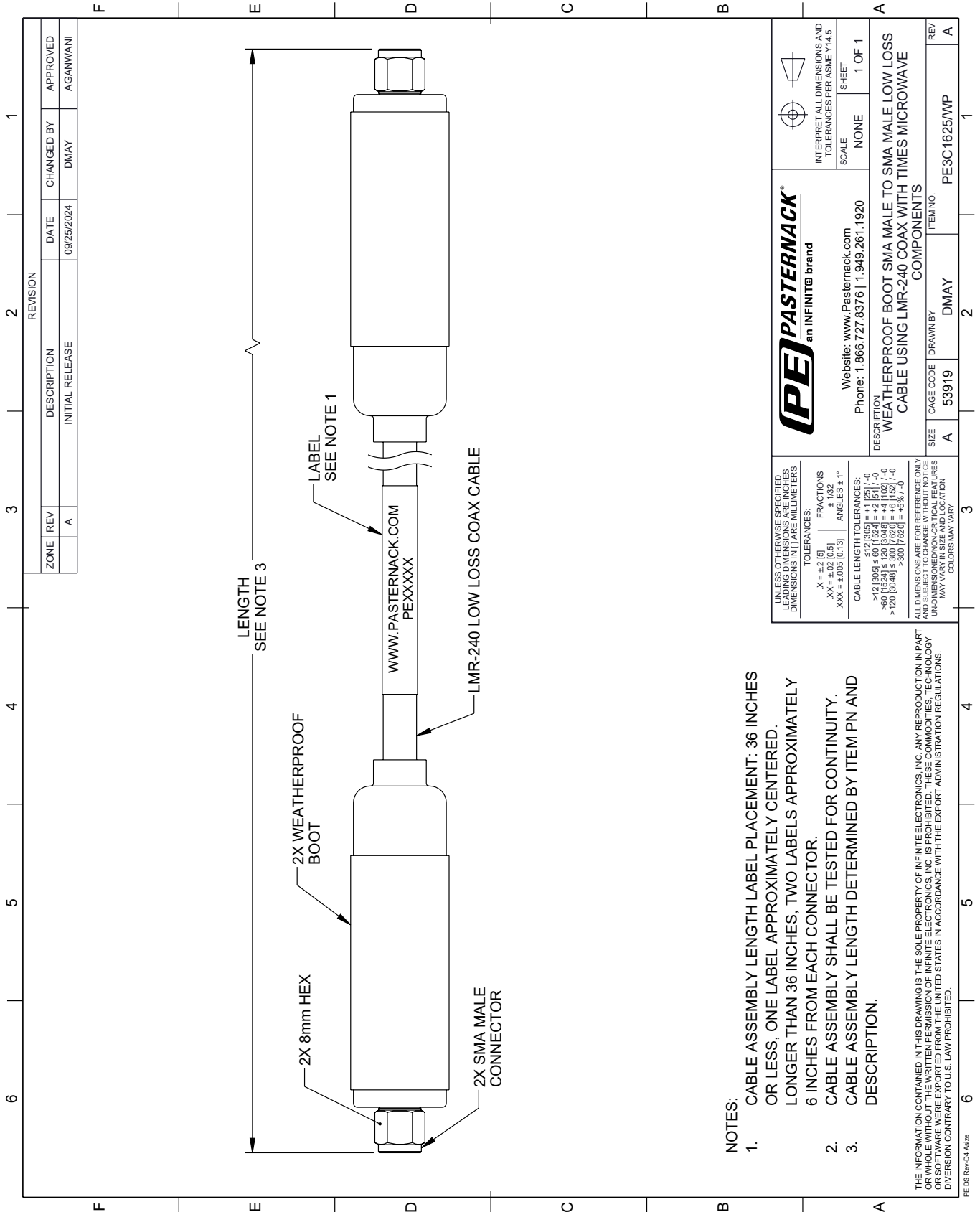
Click the following link (or enter part number in "SEARCH" on website) to obtain additional part information including price, inventory and certifications: [Waterproof IP68 SMA Male \(Plug\) to SMA Male \(Plug\) Low Loss Cable Using LMR-240 Coax with Times Microwave Components PE3C1625/WP](https://www.pasternack.com/waterproof-ip68-sma-male-plug-to-sma-male-plug-low-loss-cable-using-lmr-240-pe3c1625-wp-p.aspx)

URL: <https://www.pasternack.com/waterproof-ip68-sma-male-plug-to-sma-male-plug-low-loss-cable-using-lmr-240-pe3c1625-wp-p.aspx>

The information contained within this document is accurate to the best of our knowledge and representative of the part described herein. It may be necessary to make modifications to the part and/or the documentation of the part in order to impliment improvements. Pasternack Enterprises reserves the right to make such changes as required. Unless otherwise stated, all specifications are nominal. Pasternack Enterprises does not make any representation or warranty regarding the suitability of the part described herein for any particular purpose, and Pasternack Enterprises does not assume liability arising out of the use of any part or document.

PE3C1625/WP CAD Drawing

Waterproof IP68 SMA Male (Plug) to SMA Male (Plug) Low Loss Cable
Using LMR-240 Coax with Times Microwave Components



NOTES:

1. CABLE ASSEMBLY LENGTH LABEL PLACEMENT: 36 INCHES OR LESS, ONE LABEL APPROXIMATELY CENTERED, LONGER THAN 36 INCHES, TWO LABELS APPROXIMATELY 6 INCHES FROM EACH CONNECTOR.
2. CABLE ASSEMBLY SHALL BE TESTED FOR CONTINUITY.
3. CABLE ASSEMBLY LENGTH DETERMINED BY ITEM PN AND DESCRIPTION.

THE INFORMATION CONTAINED IN THIS DRAWING IS THE SOLE PROPERTY OF INFINITE ELECTRONICS, INC. ANY REPRODUCTION IN PART OR WHOLE WITHOUT THE WRITTEN PERMISSION OF INFINITE ELECTRONICS, INC. IS PROHIBITED. THESE COMMODITIES, TECHNOLOGY OR SOFTWARE WERE EXPORTED FROM THE UNITED STATES IN ACCORDANCE WITH THE EXPORT ADMINISTRATION REGULATIONS. DIVERSION CONTRARY TO U.S. LAW PROHIBITED.

| | |
|--|----------------|
| UNLESS OTHERWISE SPECIFIED, LEADING DIMENSIONS ARE IN INCHES. DIMENSIONS IN [] ARE MILLIMETERS. | |
| TOLERANCES: | FRACTIONS |
| .X = ±.2 [5] | ±.132 |
| .XX = ±.02 [0.5] | ±.132 |
| .XXX = ±.005 [0.13] | ANGLES ± 1° |
| CABLE LENGTH TOLERANCES: | |
| >12 [305] ≤ 60 [1524] | ±.1 [25] / -0 |
| >60 [1524] ≤ 120 [3048] | ±.4 [102] / -0 |
| >120 [3048] ≤ 300 [7620] | ±.8 [20] / -0 |
| >300 [7620] | ±.8% / 0 |
| ALL DIMENSIONS ARE FOR REFERENCE ONLY. UNDIMENSIONED/NC/CRTICAL FEATURES MAY VARY IN SIZE AND LOCATION. COLORS MAY VARY. | |

| | | | |
|---|-----------|--|-------------|
| PE PASTERNAK an INFINITE brand | | INTERPRET ALL DIMENSIONS AND TOLERANCES PER ASME Y14.5 | |
| Website: www.Pasternack.com | | SCALE | SHEET |
| Phone: 1.866.727.8376 1.949.261.1920 | | NONE | 1 OF 1 |
| DESCRIPTION WEATHERPROOF BOOT SMA MALE TO SMA MALE LOW LOSS CABLE USING LMR-240 COAX WITH TIMES MICROWAVE COMPONENTS | | | |
| SIZE | CAGE CODE | DRAWN BY | ITEM NO. |
| A | 53919 | DMAY | PE3C1625/WP |
| REV | | | A |