

75 Ohm MCX Plug to 75 Ohm BNC Female Cable Using 75 Ohm RG179 Coax



PE3C1628

Configuration

- Connector 1: MCX Plug
- Connector 2: BNC Female
- Cable Type: RG179
- Coax Flex Type: Flexible

Features

- Max Frequency 1 GHz
- FEP Jacket

Applications

- General Purpose
- Laboratory Use

Description

Pasternack's PE3C1628 75 ohm MCX plug to 75 ohm BNC female cable using 75 ohm RG179 coax is part of our full line of RF components available for same-day shipping. Pasternack's flexible RF cable assemblies are ideal for applications where tight bends and flexure are required. This Pasternack MCX to BNC cable assembly has a plug to female gender configuration with 75 ohm flexible RG179 coax. The PE3C1628 MCX plug to BNC female cable assembly operates to 1 GHz.

Custom versions of most RF cable assemblies can be built and shipped same day. Custom cable assembly lengths can be obtained by specifying the desired length on the web site at time of order or by contacting a sales representative. Other available RF cable assembly value added services include connector orientation or clocking, heat shrink booting and custom labeling. RF testing can also be performed to document the electrical performance of your cable assembly.

Electrical Specifications

Description	Minimum	Typical	Maximum	Units
Frequency Range	DC		1,000	MHz
VSWR			1.4:1	
Capacitance		23 [75.46]		pF/ft [pF/m]
Operating Voltage (AC)			250	Vrms

Specifications by Frequency

75 Ohm MCX Plug to 75 Ohm BNC Female Cable Using 75 Ohm RG179 Coax



PE3C1628

Part Number	Length	Description	F1	F2	F3	F4	Units	Weight (lbs)
			Frequency	100	250	500	1000	
PE3C1628	Custom Lengths Available	Insertion Loss (Typ.)	0.09	0.14	0.203	0.3	dB/ft	
			0.3	0.45	0.67	0.99	dB/m	
PE3C1628-12	12 inch	Insertion Loss (Typ.)	0.29	0.34	0.41	0.5	dB	0.04
PE3C1628-24	24 inch	Insertion Loss (Typ.)	0.38	0.48	0.61	0.8	dB	0.049
PE3C1628-36	36 inch	Insertion Loss (Typ.)	0.47	0.62	0.81	1.1	dB	0.058
PE3C1628-48	48 inch	Insertion Loss (Typ.)	0.56	0.75	1.02	1.4	dB	0.067
PE3C1628-72	72 inch	Insertion Loss (Typ.)	0.74	1.03	1.42	2	dB	0.085

The insertion loss data for the base model does not include loss due to the connectors. Each length includes insertion loss due to the connectors.

Loss due to Connector 1:	0.1 dB
Loss due to Connector 2:	0.1 dB
Base Weight:	0.04 pounds
Additional Weight per Inch:	0.00075 pounds

Mechanical Specifications

Cable Assembly

Weight 0.04 lbs [18.14 g]

Cable

Cable Type	RG179
Impedance	75 Ohms
Inner Conductor Type	Stranded
Inner Conductor Material and Plating	Copper Clad Steel, Silver
Dielectric Type	PTFE
Number of Shields	1
Shield Layer 1	Silver Plated Copper Braid
Jacket Material	FEP, Tan
Jacket Diameter	0.1 in [2.54 mm]

Connectors

Description	Connector 1	Connector 2
Type	MCX Plug	BNC Female
Impedance	75 Ohms	75 Ohms
Configuration	Straight	Straight
Contact Material and Plating	Brass, Gold	Brass, Gold
Contact Plating Specification	30 µin minimum	30 µin minimum
Dielectric Type	PTFE	PTFE
Body Material and Plating	Brass, Gold	Brass, Nickel
Body Plating Specification	3 µin minimum	100 µin minimum

75 Ohm MCX Plug to 75 Ohm BNC Female Cable Using 75 Ohm RG179 Coax



PE3C1628

Environmental Specifications

Operating Range Temperature -55 to +155 deg C

Compliance Certifications (see [product page](#) for current document)

Plotted and Other Data

Notes:
Values at 25°C, sea level.

Typical Performance Data

How to Order

Part Number Configuration: **PE3C1628 - xx uu**

PE3C1628: Base Number
 - xx: Length
 uu: Unit of Measure:
 cm = Centimeters
 <blank> = Inches

Example: PE3C1628-12 = 12 inches long cable
 PE3C1628-100cm = 100 cm long cable

75 Ohm MCX Plug to 75 Ohm BNC Female Cable Using 75 Ohm RG179 Coax from Pasternack Enterprises has same day shipment for domestic and International orders. Our RF, microwave and millimeter wave products maintain a 99.4% availability and are part of the broadest selection in the industry.

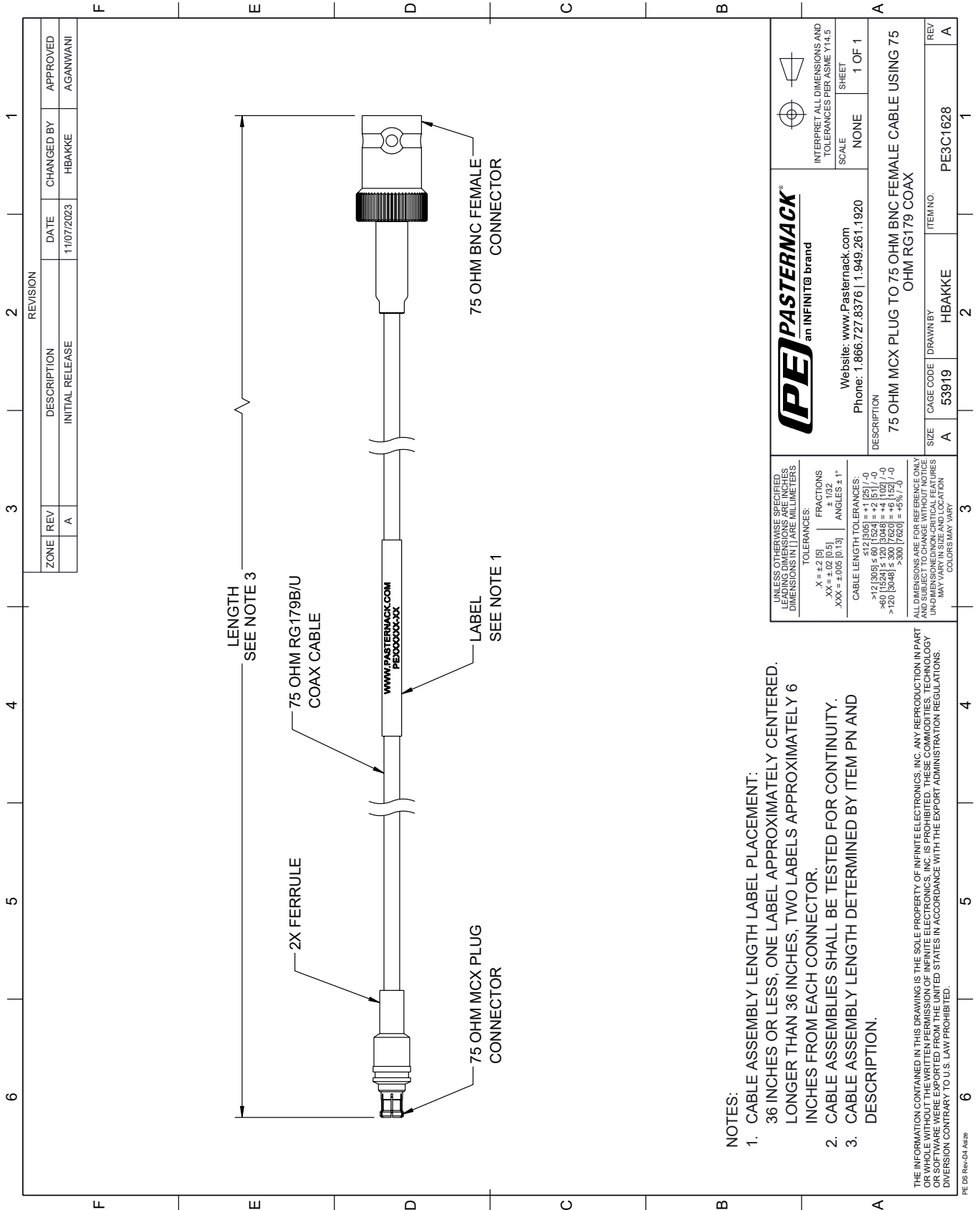
Click the following link (or enter part number in "SEARCH" on website) to obtain additional part information including price, inventory and certifications: [75 Ohm MCX Plug to 75 Ohm BNC Female Cable Using 75 Ohm RG179 Coax PE3C1628](#)

URL: <https://www.pasternack.com/75-ohm-mcx-plug-to-75-ohm-bnc-female-cable-using-rg179-pe3c1628-p.aspx>

The information contained within this document is accurate to the best of our knowledge and representative of the part described herein. It may be necessary to make modifications to the part and/or the documentation of the part in order to implement improvements. Pasternack Enterprises reserves the right to make such changes as required. Unless otherwise stated, all specifications are nominal. Pasternack Enterprises does not make any representation or warranty regarding the suitability of the part described herein for any particular purpose, and Pasternack Enterprises does not assume liability arising out of the use of any part or document.

PE3C1628 CAD Drawing

75 Ohm MCX Plug to 75 Ohm BNC Female Cable Using 75 Ohm RG179 Coax



- NOTES:
- CABLE ASSEMBLY LENGTH LABEL PLACEMENT: 36 INCHES OR LESS, ONE LABEL APPROXIMATELY CENTERED, LONGER THAN 36 INCHES, TWO LABELS APPROXIMATELY 6 INCHES FROM EACH CONNECTOR.
 - CABLE ASSEMBLIES SHALL BE TESTED FOR CONTINUITY.
 - CABLE ASSEMBLY LENGTH DETERMINED BY ITEM PN AND DESCRIPTION.

PE PASTERNAK
an INFINITE brand

Website: www.Pasternack.com
Phone: 1.866.727.8376 | 1.949.261.1920

INTERPRET ALL DIMENSIONS AND TOLERANCES PER ASME Y14.5

SCALE: NONE
SHEET: 1 OF 1

DESCRIPTION: 75 OHM MCX PLUG TO 75 OHM BNC FEMALE CABLE USING 75 OHM RG179 COAX

SIZE	A	CAGE CODE	53919	DRAWN BY	HBAKKE	ITEM NO.	PE3C1628
REV	A						

UNLESS OTHERWISE SPECIFIED, LEADING DIMENSIONS ARE IN INCHES, DIMENSIONS IN [] ARE MILLIMETERS.

TOLERANCES:
 .X = ±.2 [5]
 .XX = ±.02 [0.5]
 .XXX = ±.005 [0.13]
 FRACTIONS ± 1/32
 ANGLES ± 1°

CABLE LENGTH TOLERANCES:
 >12 [305] ≤ 60 [1524] = ±.1 [2.5] / -0
 >60 [1524] ≤ 120 [3048] = ±.4 [102] / -0
 >120 [3048] ≤ 300 [7620] = ±.6 [15.2] / -0
 >300 [7620] = ±.6 [15.2] / -0

ALL DIMENSIONS ARE FOR REFERENCE ONLY. UNLESS OTHERWISE SPECIFIED, ALL DIMENSIONS/FEATURES MAY VARY IN SIZE AND LOCATION. COLORS MAY VARY.

THE INFORMATION CONTAINED IN THIS DRAWING IS THE SOLE PROPERTY OF INFINITE ELECTRONICS, INC. ANY REPRODUCTION IN PART OR WHOLE WITHOUT THE WRITTEN PERMISSION OF INFINITE ELECTRONICS, INC. IS PROHIBITED. THESE COMMODITIES, TECHNOLOGY OR SOFTWARE ARE EXPORTED FROM THE UNITED STATES IN ACCORDANCE WITH THE EXPORT ADMINISTRATION REGULATIONS. DIVERSION CONTRARY TO U.S. LAW PROHIBITED.

PE DS Rev-04 Add2