



SMA Male Right Angle to Reverse Polarity SMA Plug Cable Using RG316-DS Coax with HeatShrink

RF Cable Assemblies Technical Data Sheet

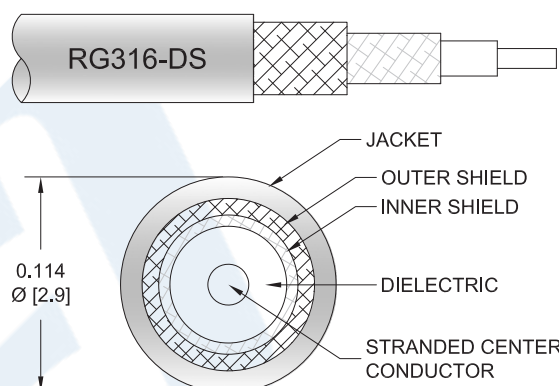
PE3C1933/HS

Configuration

- Connector 1: SMA Male Right Angle
- Connector 2: SMA Plug Reverse Polarity
- Cable Type: RG316-DS

Features

- Shielding Effectivity > 85 dB
- 69.5% Phase Velocity
- Double Shielded
- FEP Jacket



Applications

- General Purpose
- Laboratory Use

Description

Pasternack's PE3C1933/HS SMA male right angle to reverse polarity SMA plug cable using RG316-DS coax is part of our full line of RF components available for same-day shipping. Pasternack's flexible RF cable assemblies are ideal for applications where tight bends and flexure are required. This Pasternack SMA to reverse polarity SMA cable assembly has a male to plug gender configuration with 50 ohm flexible RG316-DS coax. The right angle SMA interface on the RG316-DS cable allows for easier connections in tight spaces. The double shielding of this Pasternack cable assembly provides excellent shielding effectiveness of better than 85 dB.

Custom versions of most RF cable assemblies can be built and shipped same day. Custom cable assembly lengths can be obtained by specifying the desired length on the web site at time of order or by contacting a sales representative. Other available RF cable assembly value added services include connector orientation or clocking, heat shrink booting and custom labeling. RF testing can also be performed to document the electrical performance of your cable assembly.

Electrical Specifications

Description	Minimum	Typical	Maximum	Units
Velocity of Propagation		69.5		%
RF Shielding	85			dB
Capacitance		28.96 [95.01]		pF/ft [pF/m]
DC Resistance Inner Conductor		83.82 [275]		Ω/1000ft [Ω/Km]
DC Resistance Outer Conductor		5.33 [17.49]		Ω/1000ft [Ω/Km]

Click the following link (or enter part number in "SEARCH" on website) to obtain additional part information including price, inventory and certifications: [SMA Male Right Angle to Reverse Polarity SMA Plug Cable Using RG316-DS Coax with Heat-Shrink PE3C1933/HS](#)



SMA Male Right Angle to Reverse Polarity SMA Plug Cable Using RG316-DS Coax with HeatShrink

RF Cable Assemblies Technical Data Sheet

PE3C1933/HS

Mechanical Specifications

Cable Assembly

Weight 0.038 lbs [17.24 g]

Cable

Cable Type RG316-DS
Impedance 50 Ohms
Inner Conductor Type Stranded
Inner Conductor Material and Plating Copper Clad Steel, Silver
Dielectric Type PTFE
Number of Shields 2
Shield Layer 1 Silver Plated Copper Braid
Shield Layer 2 Silver Plated Copper Braid
Jacket Material FEP, Tan
Jacket Diameter 0.114 in [2.9 mm]

One Time Minimum Bend Radius 0.59 in [14.99 mm]

Repeated Minimum Bend Radius 1.57 in [39.88 mm]

Connectors

Description	Connector 1	Connector 2
Type	SMA Male Right Angle	SMA Plug Reverse Polarity
Specification	MIL-STD-348A	
Impedance	50 Ohms	50 Ohms
Contact Material and Plating	Brass, Gold	Gold
Contact Plating Specification	50 µin minimum	
Dielectric Type	PTFE	PTFE
Body Material and Plating	Brass, Nickel	Brass, Nickel
Body Plating Specification	100 µin minimum	
Coupling Nut Material and Plating	Brass, Nickel	Brass, Nickel
Coupling Nut Plating Specification	100 µin minimum	
Hex Size	16-May inch	16-May in
Torque	3 in-lbs [0.34 Nm]	5 in-lbs [0.57 Nm]

Compliance Certifications (see [product page](#) for current document)

Plotted and Other Data

Notes:

Click the following link (or enter part number in "SEARCH" on website) to obtain additional part information including price, inventory and certifications: [SMA Male Right Angle to Reverse Polarity SMA Plug Cable Using RG316-DS Coax with Heat-Shrink PE3C1933/HS](#)



SMA Male Right Angle to Reverse Polarity SMA Plug Cable Using RG316-DS Coax with HeatShrink

RF Cable Assemblies Technical Data Sheet

PE3C1933/HS

How to Order

Part Number Configuration:

PE3C1933/HS

- **xx**

uu

Unit of Measure:
cm = Centimeters
<blank> = Inches
Length
Base Number

Example: PE3C1933/HS-12 = 12 inches long cable
PE3C1933/HS-100cm = 100 cm long cable

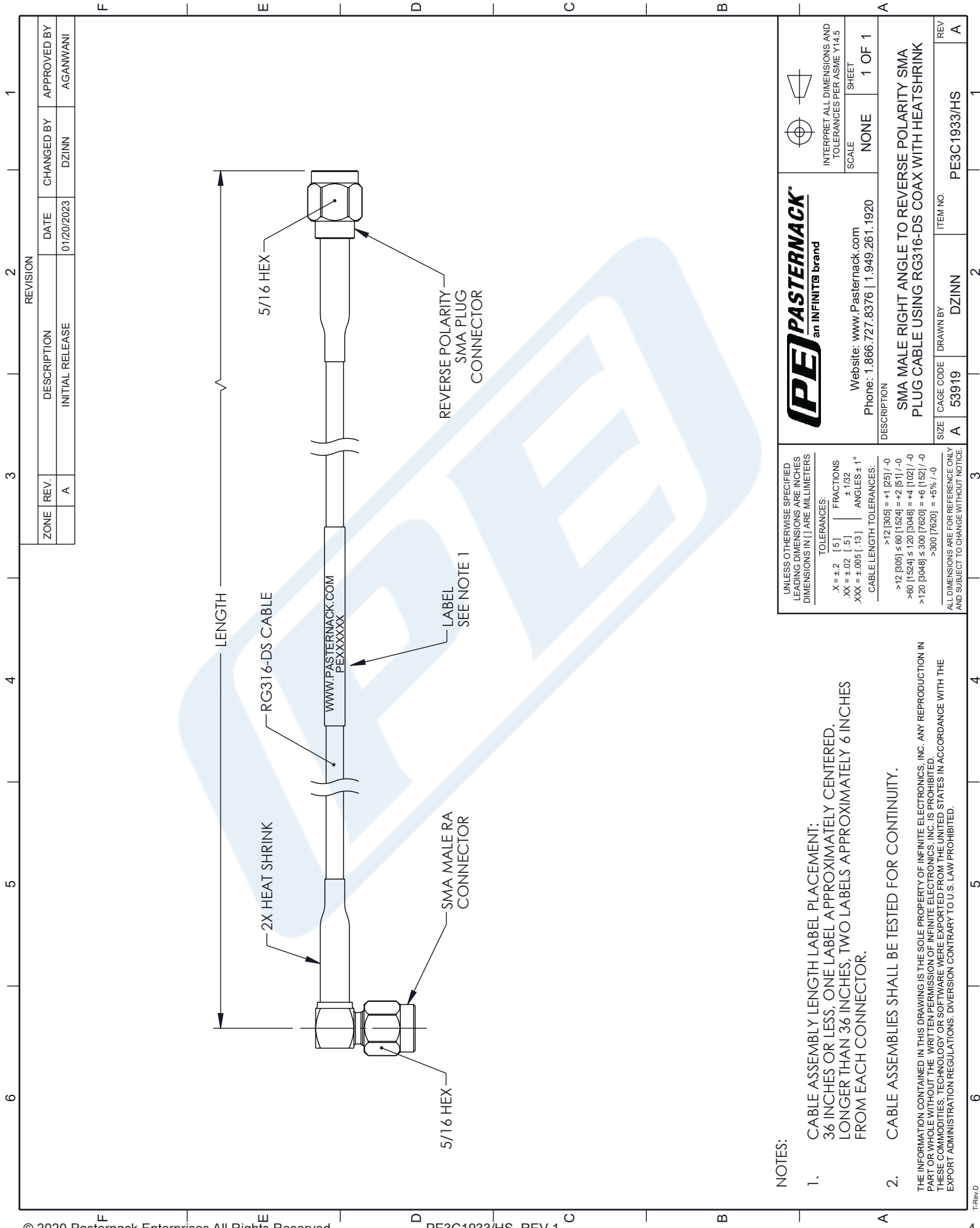
SMA Male Right Angle to Reverse Polarity SMA Plug Cable Using RG316-DS Coax with HeatShrink from Pasternack Enterprises has same day shipment for domestic and International orders. Our RF, microwave and millimeter wave products maintain a 99.4% availability and are part of the broadest selection in the industry.

Click the following link (or enter part number in "SEARCH" on website) to obtain additional part information including price, inventory and certifications: [SMA Male Right Angle to Reverse Polarity SMA Plug Cable Using RG316-DS Coax with HeatShrink PE3C1933/HS](#)

URL: <https://www.pasternack.com/sma-male-right-angle-to-reverse-polarity-sma-plug-cable-using-rg316-ds-with-heatshrink-pe3c1933-hs-p.aspx>

The information contained in this document is accurate to the best of our knowledge and representative of the part described herein. It may be necessary to make modifications to the part and/or the documentation of the part, in order to implement improvements. Pasternack reserves the right to make such changes as required. Unless otherwise stated, all specifications are nominal. Pasternack does not make any representation or warranty regarding the suitability of the part described herein for any particular purpose, and Pasternack does not assume any liability arising out of the use of any part or documentation.

PE3C1933/HS CAD Drawing
SMA Male Right Angle to Reverse Polarity SMA Plug Cable
Using RG316-DS Coax with HeatShrink



NOTES:

- CABLE ASSEMBLY LENGTH LABEL PLACEMENT:
36 INCHES OR LESS, ONE LABEL APPROXIMATELY CENTERED.
LONGER THAN 36 INCHES, TWO LABELS APPROXIMATELY 6 INCHES
FROM EACH CONNECTOR.
 - CABLE ASSEMBLIES SHALL BE TESTED FOR CONTINUITY.
- THE INFORMATION CONTAINED IN THIS DRAWING IS THE SOLE PROPERTY OF INFINITE ELECTRONICS, INC. ANY REPRODUCTION IN
PART OR WHOLE WITHOUT THE WRITTEN PERMISSION OF INFINITE ELECTRONICS, INC. IS PROHIBITED.
THESE COMMODITIES, TECHNOLOGY OR SOFTWARE WERE EXPORTED FROM THE UNITED STATES IN ACCORDANCE WITH THE
EXPORT ADMINISTRATION REGULATIONS. DIVERSION CONTRARY TO U.S. LAW PROHIBITED.

 PASTERNAK an INFINITO brand		 INTERPRET ALL DIMENSIONS AND TOLERANCES PER ASME Y14.5	
Website: www.Pasternack.com Phone: 1.866.727.8376 1.949.261.1920		SCALE	SHEET
DESCRIPTION SMA MALE RIGHT ANGLE TO REVERSE POLARITY SMA PLUG CABLE USING RG316-DS COAX WITH HEATSHRINK		NONE	1 OF 1
SIZE A	CAGE CODE 53919	DRAWN BY DZINN	REV A
ITEM NO. PE3C1933/HS			

UNLESS OTHERWISE SPECIFIED
LEADING DIMENSIONS ARE INCHES
DIMENSIONS IN [] ARE MILLIMETERS

TOLERANCES:
X = ±.2 [5] FRACTIONS
.XX = ±.02 [.5] ±.1/32
.XXX = ±.005 [.13] ANGLES ± 1°

CABLE LENGTH TOLERANCES:
>12 [305] = +1 [25] / -0
>60 [1524] ≤ 60 [1524] = +2 [61] / -0
>120 [3048] ≤ 120 [3048] = +4 [102] / -0
>300 [7620] ≤ 300 [7620] = +6 [152] / -0
>600 [15240] ≤ 600 [15240] = +8 [203] / -0
>900 [22860] ≤ 900 [22860] = +10 [254] / -0

ALL DIMENSIONS ARE FOR REFERENCE ONLY
AND SUBJECT TO CHANGE WITHOUT NOTICE.