



SMA Male to BNC Male Cable Using RG316 Coax with HeatShrink, LF Solder

RF Cable Assemblies Technical Data Sheet

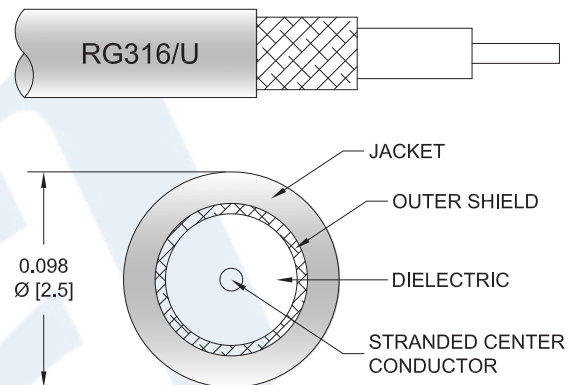
PE3C2360LF/HS

Configuration

- Connector 1: SMA Male
- Connector 2: BNC Male
- Cable Type: RG316

Features

- Max Frequency 3 GHz
- 69% Phase Velocity
- FEP Jacket



Applications

- General Purpose
- Laboratory Use

Description

Pasternack's PE3C2360LF/HS SMA male to BNC male cable using RG316 coax is part of our full line of RF components available for same-day shipping. Pasternack's flexible RF cable assemblies are ideal for applications where tight bends and flexure are required. This Pasternack SMA to BNC cable assembly has a male to male gender configuration with 50 ohm flexible RG316 coax. The PE3C2360LF/HS SMA male to BNC male cable assembly operates to 3 GHz.

Custom versions of most RF cable assemblies can be built and shipped same day. Custom cable assembly lengths can be obtained by specifying the desired length on the web site at time of order or by contacting a sales representative. Other available RF cable assembly value added services include connector orientation or clocking, heat shrink booting and custom labeling. RF testing can also be performed to document the electrical performance of your cable assembly.

Click the following link (or enter part number in "SEARCH" on website) to obtain additional part information including price, inventory and certifications: [SMA Male to BNC Male Cable Using RG316 Coax with HeatShrink, LF Solder PE3C2360LF/HS](#)



SMA Male to BNC Male Cable Using RG316 Coax with HeatShrink, LF Solder

RF Cable Assemblies Technical Data Sheet

PE3C2360LF/HS

Electrical Specifications

| Description | Minimum | Typical | Maximum | Units |
|-------------------------------|---------|--------------|---------|----------------------------------|
| Frequency Range | DC | | 3 | GHz |
| VSWR | | | 1.4:1 | |
| Velocity of Propagation | | 69 | | % |
| Capacitance | | 29.4 [96.46] | | pF/ft [pF/m] |
| DC Resistance Inner Conductor | | 8.41 [27.59] | | Ω /1000ft [Ω /Km] |
| Operating Voltage (AC) | | | 335 | Vrms |
| Jacket Spark | | | 2,000 | Vrms |

Specifications by Frequency

| Description | F1 | F2 | F3 | F4 | F5 | Units |
|-----------------------|------|------|------|------|------|-------|
| Frequency | 0.1 | 0.25 | 0.5 | 1 | 3 | GHz |
| Insertion Loss (Typ.) | 0.11 | 0.16 | 0.23 | 0.38 | 0.58 | dB/ft |
| | 0.36 | 0.52 | 0.75 | 1.25 | 1.9 | dB/m |

Electrical Specification Notes:

Insertion Loss does not include the loss of the connectors. Insertion Loss is estimated as 0.1 dB per connector.

Mechanical Specifications

Cable Assembly

Weight 0.05 lbs [22.68 g]

Cable

Cable Type RG316
 Impedance 50 Ohms
 Inner Conductor Type Stranded
 Inner Conductor Material and Plating Copper Clad Steel, Silver
 Dielectric Type PTFE
 Number of Shields 1
 Shield Layer 1 Silver Plated Copper Braid
 Jacket Material FEP, Tan
 Jacket Diameter 0.102 in [2.59 mm]

Click the following link (or enter part number in "SEARCH" on website) to obtain additional part information including price, inventory and certifications: [SMA Male to BNC Male Cable Using RG316 Coax with HeatShrink, LF Solder PE3C2360LF/HS](#)



SMA Male to BNC Male Cable Using
RG316 Coax with HeatShrink, LF Solder

RF Cable Assemblies Technical Data Sheet

PE3C2360LF/HS

Connectors

| Description | Connector 1 | Connector 2 |
|------------------------------------|----------------------|-----------------------|
| Type | SMA Male | BNC Male |
| Specification | MIL-STD-348A | MIL-STD-348A |
| Impedance | 50 Ohms | 50 Ohms |
| Contact Material and Plating | Brass, Gold | Brass, Gold |
| Contact Plating Specification | 30 μ in minimum | 50 μ in. minimum |
| Dielectric Type | PTFE | PTFE |
| Body Material and Plating | Brass, Nickel | Brass, Nickel |
| Body Plating Specification | 100 μ in minimum | 100 μ in. minimum |
| Coupling Nut Material and Plating | Brass, Nickel | Brass, Nickel |
| Coupling Nut Plating Specification | 100 μ in minimum | 100 μ in. minimum |
| Hex Size | 5/16 inch | |
| Torque | 3 in-lbs [0.34 Nm] | |

Environmental Specifications

Temperature

Operating Range -55 to +165 deg C

Compliance Certifications (see [product page](#) for current document)

Plotted and Other Data

Notes:

Click the following link (or enter part number in "SEARCH" on website) to obtain additional part information including price, inventory and certifications: [SMA Male to BNC Male Cable Using RG316 Coax with HeatShrink, LF Solder PE3C2360LF/HS](#)



SMA Male to BNC Male Cable Using RG316 Coax with HeatShrink, LF Solder

RF Cable Assemblies Technical Data Sheet

PE3C2360LF/HS

How to Order

Part Number Configuration:

PE3C2360LF/HS - xx

uu

Unit of Measure:
cm = Centimeters
<blank> = Inches
Length
Base Number

Example: PE3C2360LF/HS-12 = 12 inches long cable
PE3C2360LF/HS-100cm = 100 cm long cable

SMA Male to BNC Male Cable Using RG316 Coax with HeatShrink, LF Solder from Pasternack Enterprises has same day shipment for domestic and International orders. Our RF, microwave and millimeter wave products maintain a 99.4% availability and are part of the broadest selection in the industry.

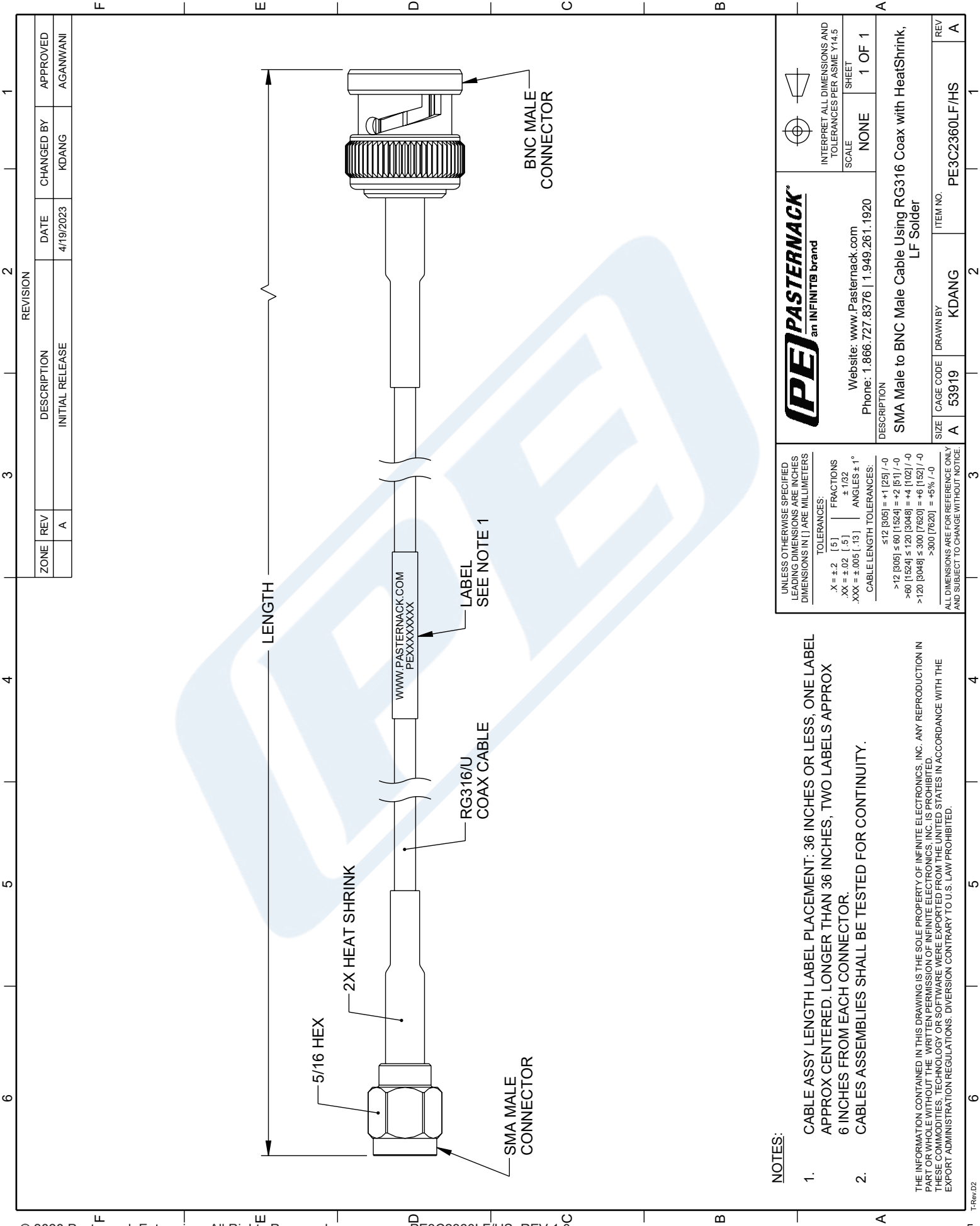
Click the following link (or enter part number in "SEARCH" on website) to obtain additional part information including price, inventory and certifications: [SMA Male to BNC Male Cable Using RG316 Coax with HeatShrink, LF Solder PE3C2360LF/HS](#)

URL: <https://www.pasternack.com/sma-male-to-bnc-male-cable-using-rg316-with-heatshrink-lf-solder-pe3c2360lf-hs-p.aspx>

The information contained in this document is accurate to the best of our knowledge and representative of the part described herein. It may be necessary to make modifications to the part and/or the documentation of the part, in order to implement improvements. Pasternack reserves the right to make such changes as required. Unless otherwise stated, all specifications are nominal. Pasternack does not make any representation or warranty regarding the suitability of the part described herein for any particular purpose, and Pasternack does not assume any liability arising out of the use of any part or documentation.

PE3C2360LF/HS CAD Drawing

SMA Male to BNC Male Cable Using RG316 Coax with HeatShrink, LF Solder



NOTES:

1. CABLE ASSY LENGTH LABEL PLACEMENT: 36 INCHES OR LESS, ONE LABEL APPROX CENTERED. LONGER THAN 36 INCHES, TWO LABELS APPROX 6 INCHES FROM EACH CONNECTOR.
2. CABLES ASSEMBLIES SHALL BE TESTED FOR CONTINUITY.

THE INFORMATION CONTAINED IN THIS DRAWING IS THE SOLE PROPERTY OF INFINITE ELECTRONICS, INC. ANY REPRODUCTION IN PART OR WHOLE WITHOUT THE WRITTEN PERMISSION OF INFINITE ELECTRONICS, INC. IS PROHIBITED. THESE COMMODITIES, TECHNOLOGY OR SOFTWARE WERE EXPORTED FROM THE UNITED STATES IN ACCORDANCE WITH THE EXPORT ADMINISTRATION REGULATIONS. DIVERSION CONTRARY TO U.S. LAW PROHIBITED.

| | | | | | |
|---|--|---|-----------------|---|------------------------|
| UNLESS OTHERWISE SPECIFIED LEADING DIMENSIONS ARE INCHES DIMENSIONS IN [] ARE MILLIMETERS | | PE PASTERNAK an INFINITE brand | | INTERPRET ALL DIMENSIONS AND TOLERANCES PER ASME Y14.5 | |
| X = ±.2 [.5] FRACTIONS .XX = ±.02 [.5] ±.1/32 .XXX = ±.005 [.13] ANGLES ± 1° | | Website: www.Pasternack.com Phone: 1.866.727.8376 1.949.261.1920 | | SCALE NONE SHEET 1 OF 1 | |
| CABLE LENGTH TOLERANCES: ≤12 [305] = +1 [25] / -0 >12 [305] ≤ 60 [1524] = +2 [51] / -0 >60 [1524] ≤ 120 [3048] = +4 [102] / -0 >120 [3048] ≤ 300 [7620] = +6 [152] / -0 >300 [7620] = +5% / -0 | | DESCRIPTION SMA Male to BNC Male Cable Using RG316 Coax with HeatShrink, LF Solder | | | |
| ALL DIMENSIONS ARE FOR REFERENCE ONLY AND SUBJECT TO CHANGE WITHOUT NOTICE. | | SIZE A | CAGE CODE 53919 | DRAWN BY KDANG | ITEM NO. PE3C2360LF/HS |