

## SMA Male to SMA Female Bulkhead Low Loss Cable Using LMR-100 Coax

### PE3C2758

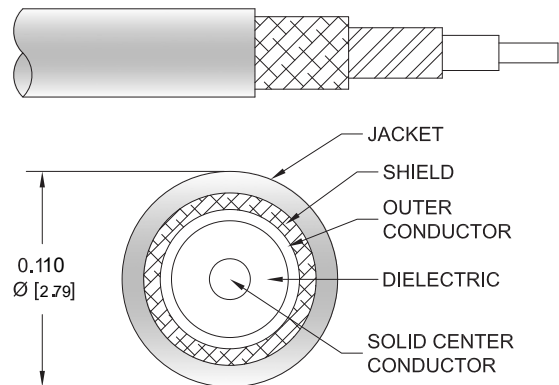


#### Configuration

- Connector 1: SMA Male
- Connector 2: SMA Female Bulkhead
- Cable Type: LMR-100A
- Coax Flex Type: Flexible

#### Features

- Max Frequency 6 GHz
- Shielding Effectivity > 90 dB
- 66% Phase Velocity
- Double Shielded
- PVC Jacket



#### Applications

- General Purpose
- Laboratory Use

#### Description

Pasternack's PE3C2758 SMA male to SMA female bulkhead cable using LMR-100 coax is part of our full line of RF components available for same-day shipping. Pasternack's flexible RF cable assemblies are ideal for applications where tight bends and flexure are required. This Pasternack SMA to SMA cable assembly has a male to female gender configuration with 50 ohm flexible LMR-100A coax. The PE3C2758 SMA male to SMA female cable assembly operates to 6 GHz. Our RF cable assembly with SMA bulkhead interface allows designers to create external connections on their product enclosures, and can be used in a variety of other rack mount and panel mount applications. The double shielding of this Pasternack cable assembly provides excellent shielding effectiveness of better than 90 dB.

Custom versions of most RF cable assemblies can be built and shipped same day. Custom cable assembly lengths can be obtained by specifying the desired length on the web site at time of order or by contacting a sales representative. Other available RF cable assembly value added services include connector orientation or clocking, heat shrink booting and custom labeling. RF testing can also be performed to document the electrical performance of your cable assembly.

#### Electrical Specifications

Description	Minimum	Typical	Maximum	Units
Frequency Range	DC		6	GHz
VSWR			1.4:1	
Velocity of Propagation		66		%
RF Shielding	90			dB
Group Delay		1.54 [5.05]		ns/ft [ns/m]
Capacitance		30.8 [101.05]		pF/ft [pF/m]
Inductance		0.077 [0.25]		uH/ft [uH/m]
DC Resistance Inner Conductor		81 [265.75]		Ohms/1000ft [Ohms/Km]
DC Resistance Outer Conductor		9.5 [31.17]		Ohms/1000ft [Ohms/Km]

## SMA Male to SMA Female Bulkhead Low Loss Cable Using LMR-100 Coax

### PE3C2758



#### Electrical Specifications

Description	Minimum	Typical	Maximum	Units
Jacket Spark			2,000	Vrms

#### Specifications by Frequency

Part Number	Length	Description	F1	F2	F3	F4	F5	Units	Weight (lbs)
		Frequency	250	500	1000	2500	6000	MHz	
PE3C2758	Custom Lengths Available	Insertion Loss (Typ.)	0.115	0.165	0.24	0.398	0.641	dB/ft	
			0.38	0.55	0.79	1.31	2.11	dB/m	
PE3C2758-24	24 Inch	Insertion Loss (Typ.)	0.58	0.68	0.83	1.15	1.64	dB	0.04
PE3C2758-36	36 Inch	Insertion Loss (Typ.)	0.7	0.85	1.07	1.55	2.28	dB	0.049
PE3C2758-48	48 Inch	Insertion Loss (Typ.)	0.81	1.01	1.31	1.95	2.92	dB	0.058
PE3C2758-100CM	100 CM	Insertion Loss (Typ.)	0.73	0.9	1.14	1.66	2.46	dB	0.052
PE3C2758-200CM	200 CM	Insertion Loss (Typ.)	1.11	1.44	1.93	2.97	4.56	dB	0.081

The insertion loss data for the base model does not include loss due to the connectors. Each length includes insertion loss due to the connectors.

Loss due to Connector 1:	0.25 dB
Loss due to Connector 2:	0.1 dB
Base Weight:	0.031 pounds
Additional Weight per Inch:	0.07833 pounds

#### Mechanical Specifications

##### Cable Assembly

Width/Diameter	0.5 in [12.7 mm]
Weight	0.031 lbs [14.06 g]

##### Cable

Cable Type	LMR-100A
Impedance	50 Ohms
Inner Conductor Type	Solid
Inner Conductor Material and Plating	Copper Clad Steel
Dielectric Type	PE
Number of Shields	2
Shield Layer 1	Aluminum Tape
Shield Layer 2	Tinned Copper Braid
Jacket Material	PVC, Black
Jacket Diameter	0.11 in [2.79 mm]
One Time Minimum Bend Radius	0.25 in [6.35 mm]
Repeated Minimum Bend Radius	1 in [25.4 mm]
Bending Moment	0.1 lbs-ft [0.14 N-m]
Flat Plate Crush	10 lbs/in [0.18 Kg/mm]
Tensile Strength	15 lbs [6.8 Kg]

## SMA Male to SMA Female Bulkhead Low Loss Cable Using LMR-100 Coax

**PE3C2758**



### Connectors

Description	Connector 1	Connector 2
Type	SMA Male	SMA Female Bulkhead
Impedance	50 Ohms	50 Ohms
Configuration	Straight	Straight
Contact Material and Plating	Brass, Gold	Beryllium Copper, Gold
Contact Plating Specification	15 µin minimum	
Dielectric Type	PTFE	PTFE
Outer Conductor Material and Plating		Brass, Gold
Body Material and Plating	Brass, Nickel	Brass, Gold
Body Plating Specification	200 µin minimum	
Coupling Nut Material and Plating	Brass, Nickel	
Coupling Nut Plating Specification	200 µin minimum	

### Environmental Specifications

Operating Range Temperature -40 to +85 deg C

**Compliance Certifications** (see [product page](#) for current document)

### Plotted and Other Data

Notes:

## SMA Male to SMA Female Bulkhead Low Loss Cable Using LMR-100 Coax

### PE3C2758



#### Typical Performance Data

#### How to Order

Part Number Configuration:

**PE3C2758**

**- xx**

**uu**

Unit of Measure:

cm = Centimeters

<blank> = Inches

Length

Base Number

Example: PE3C2758-12 = 12 inches long cable  
PE3C2758-100cm = 100 cm long cable

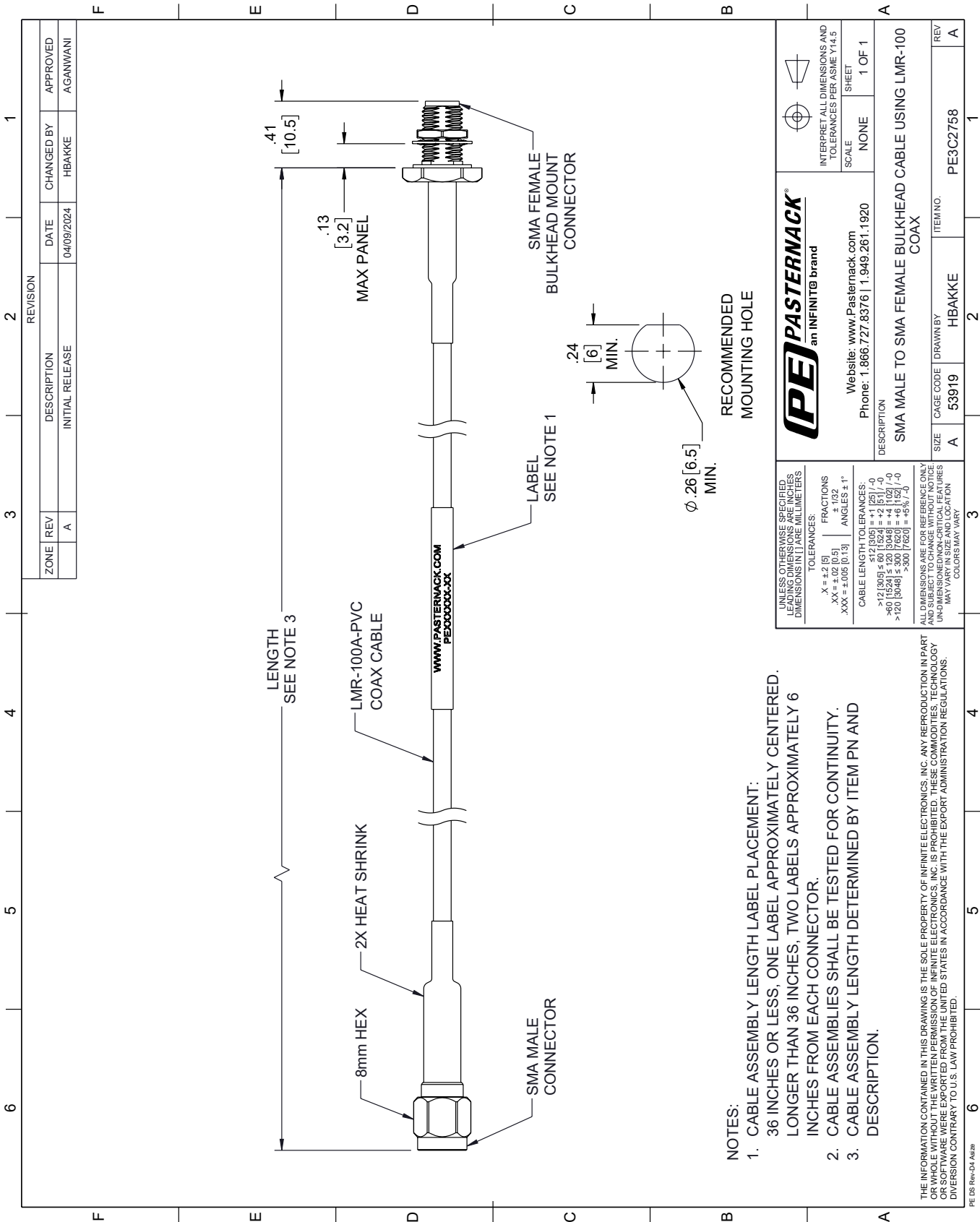
SMA Male to SMA Female Bulkhead Low Loss Cable Using LMR-100 Coax from Pasternack Enterprises has same day shipment for domestic and International orders. Our RF, microwave and millimeter wave products maintain a 99.4% availability and are part of the broadest selection in the industry.

Click the following link (or enter part number in "SEARCH" on website) to obtain additional part information including price, inventory and certifications: [SMA Male to SMA Female Bulkhead Low Loss Cable Using LMR-100 Coax PE3C2758](https://www.pasternack.com/sma-male-to-sma-female-bulkhead-low-loss-cable-using-lmr-100-pe3c2758-p.aspx)

URL: <https://www.pasternack.com/sma-male-to-sma-female-bulkhead-low-loss-cable-using-lmr-100-pe3c2758-p.aspx>

The information contained within this document is accurate to the best of our knowledge and representative of the part described herein. It may be necessary to make modifications to the part and/or the documentation of the part in order to implement improvements. Pasternack Enterprises reserves the right to make such changes as required. Unless otherwise stated, all specifications are nominal. Pasternack Enterprises does not make any representation or warranty regarding the suitability of the part described herein for any particular purpose, and Pasternack Enterprises does not assume liability arising out of the use of any part or document.

PE3C2758 CAD Drawing
SMA Male to SMA Female Bulkhead Low Loss Cable Using LMR-100 Coax



- 1. CABLE ASSEMBLY LENGTH LABEL PLACEMENT: 36 INCHES OR LESS, ONE LABEL APPROXIMATELY CENTERED. LONGER THAN 36 INCHES, TWO LABELS APPROXIMATELY 6 INCHES FROM EACH CONNECTOR.
- 2. CABLE ASSEMBLIES SHALL BE TESTED FOR CONTINUITY.
- 3. CABLE ASSEMBLY LENGTH DETERMINED BY ITEM PN AND DESCRIPTION.

UNLESS OTHERWISE SPECIFIED, ALL DIMENSIONS ARE IN INCHES. DIMENSIONS IN [ ] ARE MILLIMETERS.		<b>PE PASTERNAK</b> an INFINITI® brand		INTERPRET ALL DIMENSIONS AND TOLERANCES PER ASME Y14.5	
TOLERANCES:		Website: <a href="http://www.Pasternack.com">www.Pasternack.com</a>		SCALE: NONE	
X = ±.2 [5]		Phone: 1.866.727.8376   1.949.261.1920		SHEET 1 OF 1	
.XX = ±.02 [0.5]		DESCRIPTION		SMA MALE TO SMA FEMALE BULKHEAD CABLE USING LMR-100 COAX	
.XXX = ±.005 [0.13]		CABLE LENGTH TOLERANCES:		SIZE A	
ANGLES ± 1°		>12 [305] ≤ 60 [1524] = ±.1 [25] / -0		CAGE CODE 53919	
		>60 [1524] ≤ 120 [3048] = ±.1 [25] / -0		DRAWN BY HBAKKE	
		>120 [3048] ≤ 300 [7620] = ±.1 [25] / -0		ITEM NO. PE3C2758	
		>300 [7620] ≤ 450 [11430] = ±.1 [25] / -0		REV A	
ALL DIMENSIONS ARE FOR REFERENCE ONLY. DIMENSIONS SHALL BE DETERMINED BY THE CABLE ASSEMBLY. UNDIMENSIONED NON-CRITICAL FEATURES MAY VARY IN SIZE AND LOCATION. COLORS MAY VARY.					