

Mini SMP Female Right Angle to SMA Male Cable Using PE-P047 Coax

RF Cable Assemblies Technical Data Sheet

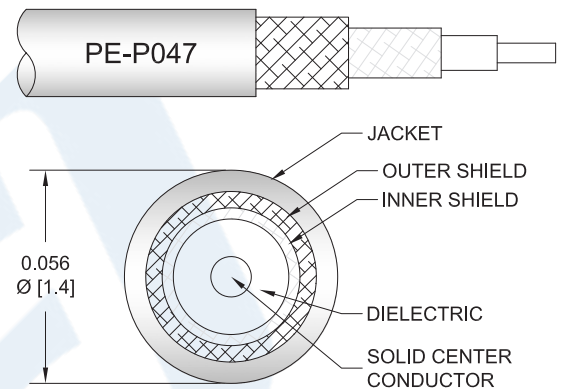
PE3C2887

Configuration

- Connector 1: Mini SMP Female Right Angle
- Connector 2: SMA Male
- Cable Type: PE-P047
- Coax Flex Type: Flexible

Features

- Max Frequency 12 GHz
- Shielding Effectivity > 90 dB
- 70% Phase Velocity
- Double Shielded
- FEP Jacket



Applications

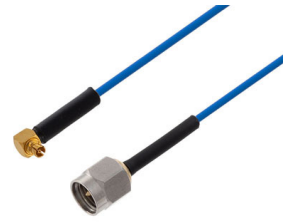
- General Purpose
- Laboratory Use

Description

Pasternack's PE3C2887 Mini SMP female right angle to SMA male cable using PE-P047 coax is part of our full line of RF components available for same-day shipping. Pasternack's flexible RF cable assemblies are ideal for applications where tight bends and flexure are required. This Pasternack Mini SMP to SMA cable assembly has a female to male gender configuration with 50 ohm flexible PE-P047 coax. The PE3C2887 Mini SMP female to SMA male cable assembly operates to 12 GHz. The right angle Mini SMP interface on the PE-P047 cable allows for easier connections in tight spaces. The double shielding of this Pasternack cable assembly provides excellent shielding effectiveness of better than 90 dB.

Custom versions of most RF cable assemblies can be built and shipped same day. Custom cable assembly lengths can be obtained by specifying the desired length on the web site at time of order or by contacting a sales representative. Other available RF cable assembly value added services include connector orientation or clocking, heat shrink booting and custom labeling. RF testing can also be performed to document the electrical performance of your cable assembly.

Click the following link (or enter part number in "SEARCH" on website) to obtain additional part information including price, inventory and certifications: [Mini SMP Female Right Angle to SMA Male Cable Using PE-P047 Coax PE3C2887](#)



Mini SMP Female Right Angle to SMA
Male Cable Using PE-P047 Coax

RF Cable Assemblies Technical Data Sheet

PE3C2887

Electrical Specifications

Description	Minimum	Typical	Maximum	Units
Frequency Range	DC		12	GHz
VSWR			1.4:1	
Velocity of Propagation		70		%
RF Shielding	90			dB
Capacitance		29 [95.14]		pF/ft [pF/m]

Specifications by Frequency

Description	F1	F2	F3	F4	F5	Units
Frequency	1	2.5	5	12		GHz
Insertion Loss (Typ.)	0.335	0.539	0.786	1.304		dB/ft
	1.1	1.77	2.58	4.28		dB/m

Electrical Specification Notes:

Insertion Loss does not include the loss of the connectors. Insertion Loss is estimated as 0.2 dB for the Mini SMP female connector and 0.26 dB for the SMA male connector.

Mechanical Specifications

Cable Assembly

Weight 0.016 lbs [7.26 g]

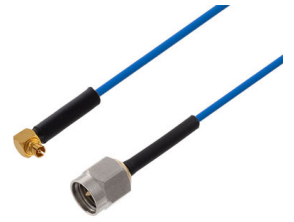
Cable

Cable Type PE-P047
 Impedance 50 Ohms
 Inner Conductor Type Solid
 Inner Conductor Material and Plating Copper, Silver
 Dielectric Type FEP
 Number of Shields 2
 Shield Layer 1 Silver Plated Copper Tape
 Shield Layer 2 Silver Plated Copper Braid
 Jacket Material FEP, Blue
 Jacket Diameter 0.056 in [1.42 mm]

One Time Minimum Bend Radius 0.2 in [5.08 mm]

Repeated Minimum Bend Radius 0.4 in [10.16 mm]

Click the following link (or enter part number in "SEARCH" on website) to obtain additional part information including price, inventory and certifications: [Mini SMP Female Right Angle to SMA Male Cable Using PE-P047 Coax PE3C2887](#)



Mini SMP Female Right Angle to SMA
Male Cable Using PE-P047 Coax

RF Cable Assemblies Technical Data Sheet

PE3C2887

Connectors

Description	Connector 1	Connector 2
Type	Mini SMP Female Right Angle	SMA Male
Specification	MIL-STD-348A	
Impedance	50 Ohms	50 Ohms
Mating Cycles		500
Contact Material and Plating	Beryllium Copper, Gold	Beryllium Copper, Gold over Nickel
Contact Plating Specification		MIL-G-45204
Dielectric Type	PTFE	PTFE
Outer Conductor Material and Plating	Beryllium Copper, Gold	
Body Material and Plating	Brass, Gold	Brass, Gold
Body Plating Specification		MIL-G-45204
Coupling Nut Material and Plating		Passivated Stainless Steel
Coupling Nut Plating Specification		ASTM-A380
Hex Size		5/16 inch
Torque		8 in-lbs [0.9 Nm]

Environmental Specifications

Temperature

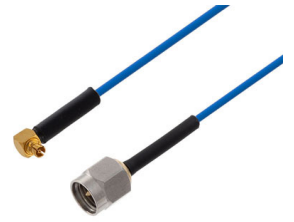
Operating Range -55 to +100 deg C

Compliance Certifications (see [product page](#) for current document)

Plotted and Other Data

Notes:

Click the following link (or enter part number in "SEARCH" on website) to obtain additional part information including price, inventory and certifications: [Mini SMP Female Right Angle to SMA Male Cable Using PE-P047 Coax PE3C2887](#)



Mini SMP Female Right Angle to SMA
Male Cable Using PE-P047 Coax

RF Cable Assemblies Technical Data Sheet

PE3C2887

How to Order

Part Number Configuration:

PE3C2887

- **xx**

uu

Unit of Measure:
cm = Centimeters
<blank> = Inches
Length
Base Number

Example: PE3C2887-12 = 12 inches long cable
PE3C2887-100cm = 100 cm long cable

Mini SMP Female Right Angle to SMA Male Cable Using PE-P047 Coax from Pasternack Enterprises has same day shipment for domestic and International orders. Our RF, microwave and millimeter wave products maintain a 99.4% availability and are part of the broadest selection in the industry.

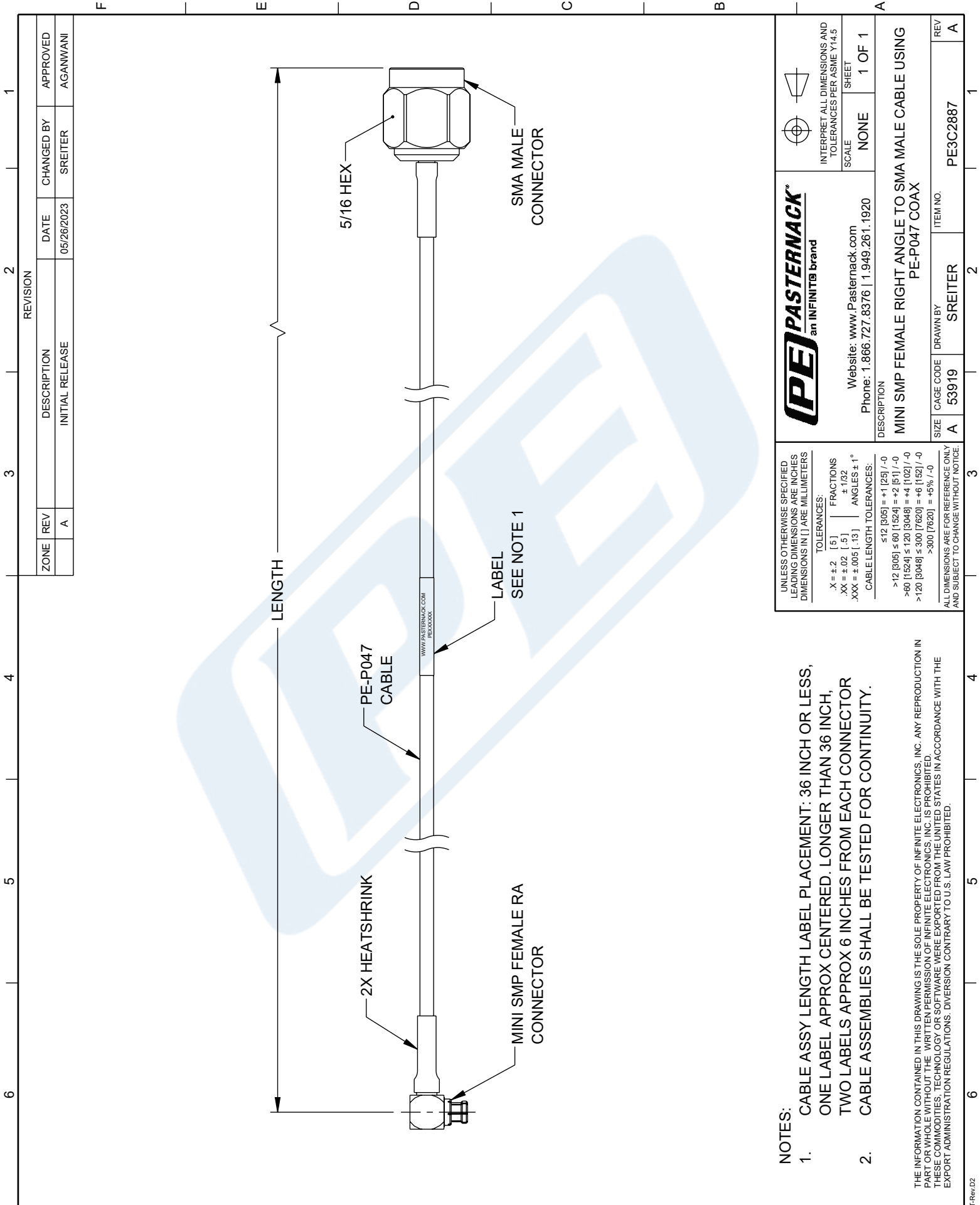
Click the following link (or enter part number in "SEARCH" on website) to obtain additional part information including price, inventory and certifications: [Mini SMP Female Right Angle to SMA Male Cable Using PE-P047 Coax PE3C2887](https://www.pasternack.com/mini-smp-female-right-angle-to-sma-male-cable-using-pe-p047-pe3c2887-p.aspx)

URL: <https://www.pasternack.com/mini-smp-female-right-angle-to-sma-male-cable-using-pe-p047-pe3c2887-p.aspx>

The information contained in this document is accurate to the best of our knowledge and representative of the part described herein. It may be necessary to make modifications to the part and/or the documentation of the part, in order to implement improvements. Pasternack reserves the right to make such changes as required. Unless otherwise stated, all specifications are nominal. Pasternack does not make any representation or warranty regarding the suitability of the part described herein for any particular purpose, and Pasternack does not assume any liability arising out of the use of any part or documentation.

PE3C2887 CAD Drawing

Mini SMP Female Right Angle to SMA Male Cable Using PE-P047 Coax



ZONE	REV	DESCRIPTION	DATE	CHANGED BY	APPROVED
	A	INITIAL RELEASE	05/26/2023	SREITER	AGANWANI

PE PASTERNAK
an INFINITO brand

Website: www.Pasternack.com
Phone: 1.866.727.8376 | 1.949.261.1920

DESCRIPTION
MINI SMP FEMALE RIGHT ANGLE TO SMA MALE CABLE USING PE-P047 COAX

SCALE: NONE
SHEET: 1 OF 1

INTERPRET ALL DIMENSIONS AND TOLERANCES PER ASME Y14.5

UNLESS OTHERWISE SPECIFIED LEADING DIMENSIONS ARE INCHES DIMENSIONS IN [] ARE MILLIMETERS

TOLERANCES:
 .X = ±.2 [.5] FRACTIONS
 .XX = ±.02 [.5] ±.1/32
 .XXX = ±.005 [.13] ANGLES ± 1°
 CABLE LENGTH TOLERANCES:
 ≤12 [305] = +1 [25] / -0
 >12 [305] ≤ 60 [1524] = +2 [51] / -0
 >60 [1524] ≤ 120 [3048] = +4 [102] / -0
 >120 [3048] ≤ 300 [7620] = +6 [152] / -0
 >300 [7620] = +5% / -0

ALL DIMENSIONS ARE FOR REFERENCE ONLY AND SUBJECT TO CHANGE WITHOUT NOTICE.

SIZE: A

CAGE CODE: 53919

DRAWN BY: SREITER

ITEM NO.: PE3C2887

REV: A

- NOTES:**
- CABLE ASSY LENGTH LABEL PLACEMENT: 36 INCH OR LESS, ONE LABEL APPROX CENTERED. LONGER THAN 36 INCH, TWO LABELS APPROX 6 INCHES FROM EACH CONNECTOR. CABLE ASSEMBLIES SHALL BE TESTED FOR CONTINUITY.
- THE INFORMATION CONTAINED IN THIS DRAWING IS THE SOLE PROPERTY OF INFINITE ELECTRONICS, INC. ANY REPRODUCTION IN PART OR WHOLE WITHOUT THE WRITTEN PERMISSION OF INFINITE ELECTRONICS, INC. IS PROHIBITED. THESE COMMODITIES, TECHNOLOGY OR SOFTWARE WERE EXPORTED FROM THE UNITED STATES IN ACCORDANCE WITH THE EXPORT ADMINISTRATION REGULATIONS. DIVERSION CONTRARY TO U.S. LAW PROHIBITED.