

Waterproof IP68 SMA Male (Plug) to SMA Male (Plug) Low Loss Cable Using LMR-195 Coax with Times Microwave Components



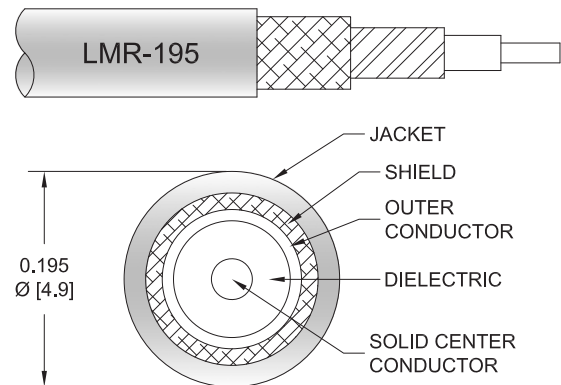
PE3C3055/WP

Configuration

- Connector 1: SMA Male
- Connector 2: SMA Male
- Cable Type: LMR-195
- Coax Flex Type: Flexible

Features

- Max Frequency 6 GHz
- Shielding Effectivity > 90 dB
- 80% Phase Velocity
- Double Shielded
- PE Jacket
- Silicone Connector Boot
- IP68 Rated



Applications

- General Purpose
- Laboratory Use

Description

The Pasternack PE3C3055/WP is a weatherproof low loss cable assembly that comes with SMA male connection with weatherproof boot on one end and SMA male with weatherproof boot on the other. Pasternack's RF coaxial cable assembly products are designed for typical use, production, laboratory test and measurement, defense/military, aerial antenna towers, etc. The low loss cable has a 50 Ohm impedance and is specifically ready for quicker shipment than most in the industry can provide.

This weatherproof low loss RF cable assembly operates at a maximum frequency of 6 GHz. Our RF cable assembly has a PE jacket with 0.195 inches diameter. The SMA male to SMA male cable assembly PE3C3055/WP is built with LMR-195 coax, which has a flexible design. This RF cable assembly with 0.5 inches diameter has copper as cable's inner conducting material and PE (F) dielectric type. The weatherproof boot low loss cable is reusable and can withstand elements including extreme temperature. Additional dimensions, specifications, and CAD drawings for this PE3C3055/WP low loss RF cable are available on our downloadable PDF datasheet.

Pasternack stocks a wide selection of weatherproof low loss cable assemblies that ship the same business day as ordered from our warehouse. Make your online purchase right now to take advantage of our same-day shipping. For further information on similar products, our expert technical support and knowledgeable sales team can help you get the ideal SMA male to SMA male cable assembly as per your requirements.

Electrical Specifications

Description	Minimum	Typical	Maximum	Units
Frequency Range	DC		6	GHz
VSWR			1.4:1	
Velocity of Propagation		80		%
RF Shielding	90			dB
Capacitance		25.4 [83.33]		pF/ft [pF/m]
Inductance		0.064 [0.21]		uH/ft [uH/m]
DC Resistance Inner Conductor		7.6 [24.93]		Ohms/1000ft [Ohms/Km]

Waterproof IP68 SMA Male (Plug) to SMA Male (Plug) Low Loss Cable Using LMR-195 Coax with Times Microwave Components



PE3C3055/WP

Electrical Specifications

Description	Minimum	Typical	Maximum	Units
DC Resistance Outer Conductor		4.9 [16.08]		Ohms/1000ft [Ohms/Km]
Dielectric Withstanding Voltage (DC)			1,000	Vdc
Jacket Spark			3,000	Vrms

Specifications by Frequency

Part Number	Length	Description	F1	F2	F3	F4	F5	Units	Weight (lbs)
			Frequency					MHz	
PE3C3055/WP	Custom Lengths Available	Insertion Loss (Typ.)	0.057	0.081	0.116	0.19	0.299	dB/ft	
			0.19	0.27	0.39	0.63	0.99	dB/m	
PE3C3055/WP-12	12 Inch	Insertion Loss (Typ.)	0.26	0.29	0.32	0.39	0.5	dB	1.06
PE3C3055/WP-24	24 Inch	Insertion Loss (Typ.)	0.32	0.37	0.44	0.58	0.8	dB	1.082
PE3C3055/WP-36	36 Inch	Insertion Loss (Typ.)	0.38	0.45	0.55	0.77	1.1	dB	1.104
PE3C3055/WP-48	48 Inch	Insertion Loss (Typ.)	0.43	0.53	0.67	0.96	1.4	dB	1.126
PE3C3055/WP-60	60 Inch	Insertion Loss (Typ.)	0.49	0.61	0.78	1.15	1.7	dB	1.148

The insertion loss data for the base model does not include loss due to the connectors. Each length includes insertion loss due to the connectors.

- Loss due to Connector 1: 0.1 dB
- Loss due to Connector 2: 0.1 dB
- Base Weight: 1.06 pounds
- Additional Weight per Inch: 0.00183 pounds

Electrical Specification Notes:
Values at 25°C, sea level.

Mechanical Specifications

Cable Assembly

- Width/Diameter: 0.5 in [12.7 mm]
- Weight: 1.06 lbs [480.81 g]

Cable

- Cable Type: LMR-195
- Impedance: 50 Ohms
- Inner Conductor Type: Solid
- Inner Conductor Material and Plating: Copper
- Dielectric Type: PE (F)
- Number of Shields: 2
- Shield Layer 1: Aluminum Tape
- Shield Layer 2: Tinned Copper Braid
- Jacket Material: PE
- Jacket Diameter: 0.195 in [4.95 mm]
- One Time Minimum Bend Radius: 0.5 in [12.7 mm]
- Repeated Minimum Bend Radius: 2 in [50.8 mm]
- Bending Moment: 0.2 lbs-ft [0.27 N-m]

Waterproof IP68 SMA Male (Plug) to SMA Male (Plug) Low Loss Cable Using LMR-195 Coax with Times Microwave Components



PE3C3055/WP

Flat Plate Crush	15 lbs/in [0.27 Kg/mm]
Tensile Strength	40 lbs [18.14 Kg]

Connectors

Description	Connector 1	Connector 2
Type	SMA Male	SMA Male
Option	Weatherproof Boot	Weatherproof Boot
Impedance	50 Ohms	50 Ohms
Configuration	Straight	Straight
Contact Material and Plating	Brass, Gold	Brass, Gold
Contact Plating Specification	ASTM B488	ASTM B488
Dielectric Type	Teflon	Teflon
Body Material and Plating	Passivated Stainless Steel	Passivated Stainless Steel
Coupling Nut Material and Plating	Passivated Stainless Steel	Passivated Stainless Steel
Boot Material	Silicone	Silicone

Environmental Specifications

Ingress Protection (IP) Rating	IP68
--------------------------------	------

Compliance Certifications (see [product page](#) for current document)

Plotted and Other Data

Notes:
Values at 25°C, sea level.

Waterproof IP68 SMA Male (Plug) to SMA Male (Plug) Low Loss Cable Using LMR-195 Coax with Times Microwave Components



PE3C3055/WP

Typical Performance Data

How to Order

Part Number Configuration:

PE3C3055/WP - xx uu

Unit of Measure:
cm = Centimeters
<blank> = Inches

Length

Base Number

Example: PE3C3055/WP-12 = 12 inches long cable
PE3C3055/WP-100cm = 100 cm long cable

Waterproof IP68 SMA Male (Plug) to SMA Male (Plug) Low Loss Cable Using LMR-195 Coax with Times Microwave Components from Pasternack Enterprises has same day shipment for domestic and International orders. Our RF, microwave and millimeter wave products maintain a 99.4% availability and are part of the broadest selection in the industry.

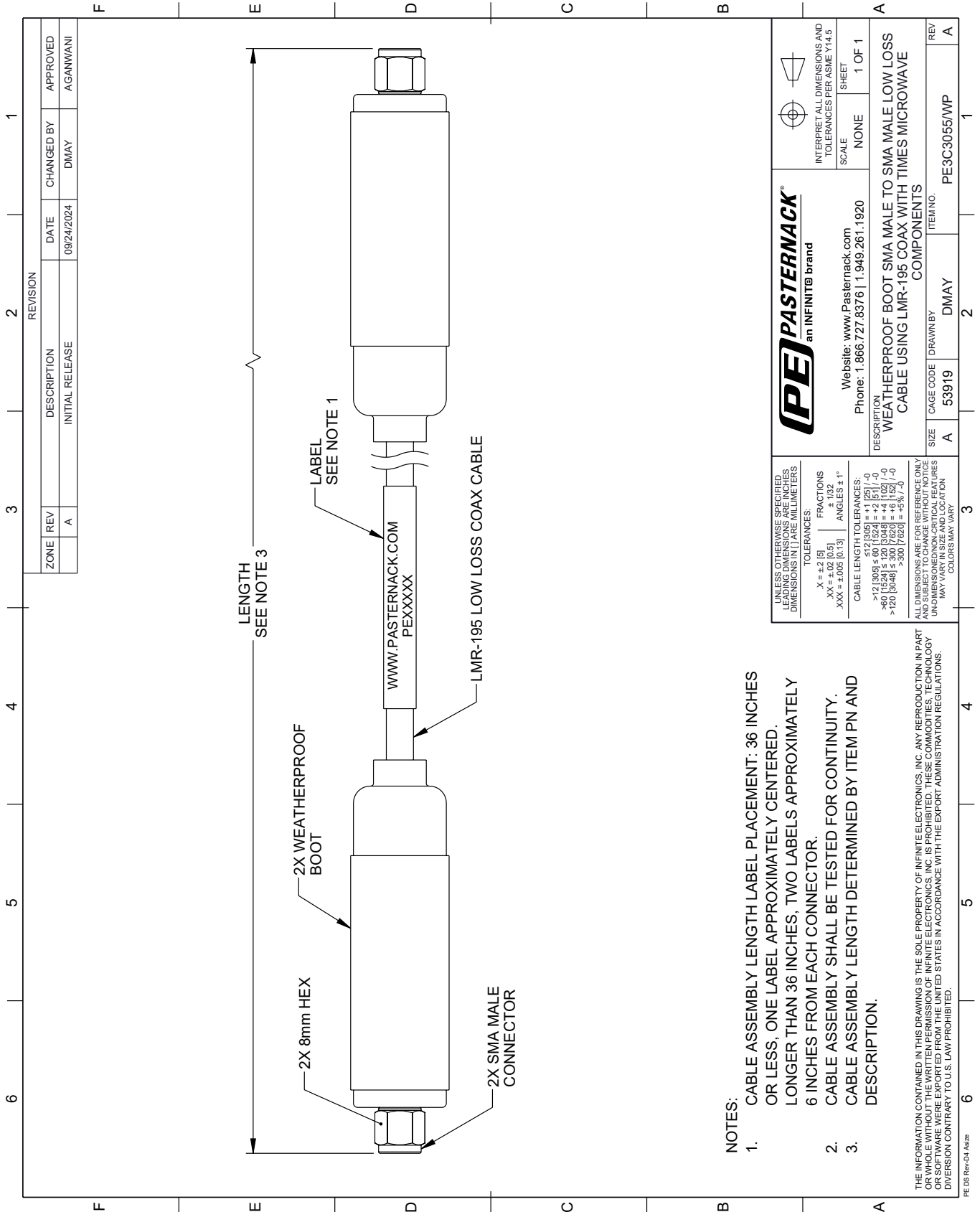
Click the following link (or enter part number in "SEARCH" on website) to obtain additional part information including price, inventory and certifications: [Waterproof IP68 SMA Male \(Plug\) to SMA Male \(Plug\) Low Loss Cable Using LMR-195 Coax with Times Microwave Components PE3C3055/WP](https://www.pasternack.com/waterproof-ip68-sma-male-plug-to-sma-male-plug-low-loss-cable-using-lmr-195-pe3c3055-wp-p.aspx)

URL: <https://www.pasternack.com/waterproof-ip68-sma-male-plug-to-sma-male-plug-low-loss-cable-using-lmr-195-pe3c3055-wp-p.aspx>

The information contained within this document is accurate to the best of our knowledge and representative of the part described herein. It may be necessary to make modifications to the part and/or the documentation of the part in order to impliment improvements. Pasternack Enterprises reserves the right to make such changes as required. Unless otherwise stated, all specifications are nominal. Pasternack Enterprises does not make any representation or warranty regarding the suitability of the part described herein for any particular purpose, and Pasternack Enterprises does not assume liability arising out of the use of any part or document.

PE3C3055/WP CAD Drawing

Waterproof IP68 SMA Male (Plug) to SMA Male (Plug) Low Loss Cable
Using LMR-195 Coax with Times Microwave Components



REVISION		DATE	CHANGED BY	APPROVED	
ZONE	REV	DESCRIPTION	DATE	CHANGED BY	APPROVED
	A	INITIAL RELEASE	09/24/2024	DMAY	AGANWANI

 Website: www.Pasternack.com Phone: 1.866.727.8376 1.949.261.1920		INTERPRET ALL DIMENSIONS AND TOLERANCES PER ASME Y14.5 SCALE: NONE SHEET: 1 OF 1
WEATHERPROOF BOOT SMA MALE TO SMA MALE LOW LOSS CABLE USING LMR-195 COAX WITH TIMES MICROWAVE COMPONENTS		
DESCRIPTION	SIZE	REV
A	53919	A
CAGE CODE	DRAWN BY	ITEM NO.
A	DMAY	PE3C3055/WP

UNLESS OTHERWISE SPECIFIED, LEADING DIMENSIONS ARE IN INCHES, DIMENSIONS IN [] ARE MILLIMETERS.

TOLERANCES:
 .X = ±.2 (5)
 .XX = ±.02 (0.5)
 .XXX = ±.005 (0.13)

FRACTIONS:
 ± 1/32
 ANGLES ± 1°

CABLE LENGTH TOLERANCES:
 >12 [305] ≤ 60 [1524] = ±.125 (-0)
 >60 [1524] ≤ 120 [3048] = ±.102 (-0)
 >120 [3048] ≤ 300 [7620] = ±.078 (-0)

ALL DIMENSIONS ARE FOR REFERENCE ONLY. UNLESS OTHERWISE SPECIFIED, DIMENSIONS MAY VARY IN SIZE AND LOCATION. COLORS MAY VARY.

- NOTES:
- CABLE ASSEMBLY LENGTH LABEL PLACEMENT: 36 INCHES OR LESS, ONE LABEL APPROXIMATELY CENTERED. LONGER THAN 36 INCHES, TWO LABELS APPROXIMATELY 6 INCHES FROM EACH CONNECTOR.
 - CABLE ASSEMBLY SHALL BE TESTED FOR CONTINUITY.
 - CABLE ASSEMBLY LENGTH DETERMINED BY ITEM PN AND DESCRIPTION.

THE INFORMATION CONTAINED IN THIS DRAWING IS THE SOLE PROPERTY OF INFINITE ELECTRONICS, INC. ANY REPRODUCTION IN PART OR WHOLE WITHOUT THE WRITTEN PERMISSION OF INFINITE ELECTRONICS, INC. IS PROHIBITED. THESE COMMODITIES, TECHNOLOGY OR SOFTWARE ARE EXPORTED FROM THE UNITED STATES IN ACCORDANCE WITH THE EXPORT ADMINISTRATION REGULATIONS. DIVISION CONTRARY TO U.S. LAW PROHIBITED.