

SHV Plug to Banana Plug Cable Using RG142 Coax with HeatShrink

PE3C3128/HS

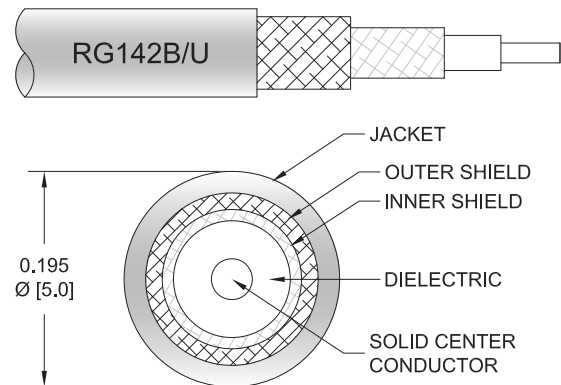


Configuration

- Connector 1: SHV Plug
- Connector 2: Banana Plug
- Cable Type: RG142
- Coax Flex Type: Flexible

Features

- 70% Phase Velocity
- Double Shielded
- FEP Jacket



Applications

- General Purpose
- Laboratory Use

Description

Pasternack's PE3C3128/HS 50 ohm SHV plug to Banana plug cable using RG142 coax is part of our full line of RF components available for same-day shipping. Pasternack's flexible RF cable assemblies are ideal for applications where tight bends and flexure are required. This Pasternack SHV to Banana cable assembly has a plug to plug gender configuration with 50 ohm flexible RG142 coax. The double shielding of this Pasternack cable assembly provides excellent shielding effectiveness.

Custom versions of most RF cable assemblies can be built and shipped same day. Custom cable assembly lengths can be obtained by specifying the desired length on the web site at time of order or by contacting a sales representative. Other available RF cable assembly value added services include connector orientation or clocking, heat shrink booting and custom labeling. RF testing can also be performed to document the electrical performance of your cable assembly.

Electrical Specifications

Description	Minimum	Typical	Maximum	Units
Velocity of Propagation		70		%
Capacitance		29.4 [96.46]		pF/ft [pF/m]

Mechanical Specifications

Cable Assembly

Weight 0.117 lbs [53.07 g]

Cable

Cable Type RG142
 Impedance 50 Ohms
 Inner Conductor Type Solid
 Inner Conductor Material and Plating Copper Clad Steel, Silver
 Dielectric Type PTFE
 Number of Shields 2

SHV Plug to Banana Plug Cable Using RG142 Coax with HeatShrink



PE3C3128/HS

Shield Layer 1	Silver Plated Copper Braid
Shield Layer 2	Silver Plated Copper Braid
Jacket Material	FEP, Tan
Jacket Diameter	0.195 in [4.95 mm]
Repeated Minimum Bend Radius	1 in [25.4 mm]

Connectors

Description	Connector 1	Connector 2
Type	SHV Plug	Banana Plug
Impedance	50 Ohms	0 Ohms
Configuration	Straight	Straight
Contact Material and Plating	Brass, Gold	
Contact Plating Specification	30 μinches minimum	
Dielectric Type	Teflon	
Body Material and Plating	Brass, Nickel	Brass, Nickel
Body Plating Specification	100 μinches minimum	

Environmental Specifications

Compliance Certifications (see [product page](#) for current document)

Plotted and Other Data

Notes:

SHV Plug to Banana Plug Cable Using RG142 Coax with HeatShrink

PE3C3128/HS



Typical Performance Data

How to Order

Part Number Configuration:

PE3C3128/HS

- xx

uu

Unit of Measure:
cm = Centimeters
<blank> = Inches

Length

Base Number

Example: PE3C3128/HS-12 = 12 inches long cable
PE3C3128/HS-100cm = 100 cm long cable

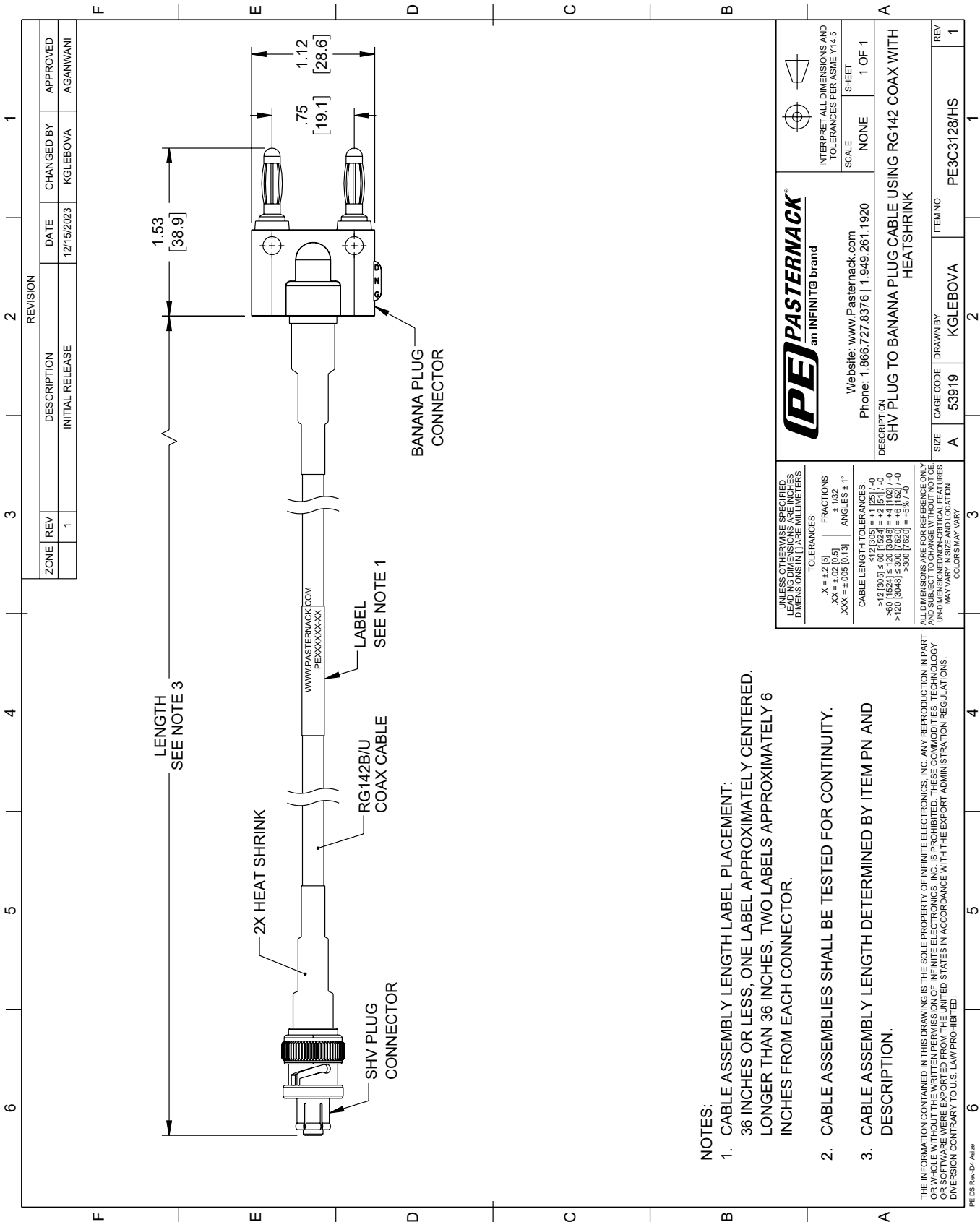
SHV Plug to Banana Plug Cable Using RG142 Coax with HeatShrink from Pasternack Enterprises has same day shipment for domestic and International orders. Our RF, microwave and millimeter wave products maintain a 99.4% availability and are part of the broadest selection in the industry.

Click the following link (or enter part number in "SEARCH" on website) to obtain additional part information including price, inventory and certifications: [SHV Plug to Banana Plug Cable Using RG142 Coax with HeatShrink PE3C3128/HS](https://www.pasternack.com/shv-plug-to-banana-plug-cable-using-rg142-with-heatshrink-pe3c3128-hs-p.aspx)

URL: <https://www.pasternack.com/shv-plug-to-banana-plug-cable-using-rg142-with-heatshrink-pe3c3128-hs-p.aspx>

The information contained within this document is accurate to the best of our knowledge and representative of the part described herein. It may be necessary to make modifications to the part and/or the documentation of the part in order to implement improvements. Pasternack Enterprises reserves the right to make such changes as required. Unless otherwise stated, all specifications are nominal. Pasternack Enterprises does not make any representation or warranty regarding the suitability of the part described herein for any particular purpose, and Pasternack Enterprises does not assume liability arising out of the use of any part or document.

PE3C3128/HS CAD Drawing
SHV Plug to Banana Plug Cable Using RG142 Coax with HeatShrink



- NOTES:
- 1. CABLE ASSEMBLY LENGTH LABEL PLACEMENT: 36 INCHES OR LESS, ONE LABEL APPROXIMATELY CENTERED. LONGER THAN 36 INCHES, TWO LABELS APPROXIMATELY 6 INCHES FROM EACH CONNECTOR.
 - 2. CABLE ASSEMBLIES SHALL BE TESTED FOR CONTINUITY.
 - 3. CABLE ASSEMBLY LENGTH DETERMINED BY ITEM PN AND DESCRIPTION.

THE INFORMATION CONTAINED IN THIS DRAWING IS THE SOLE PROPERTY OF INFINITE ELECTRONICS, INC. ANY REPRODUCTION IN PART OR WHOLE WITHOUT THE WRITTEN PERMISSION OF INFINITE ELECTRONICS, INC. IS PROHIBITED. THESE COMMODITIES, TECHNOLOGY OR SOFTWARE WERE EXPORTED FROM THE UNITED STATES IN ACCORDANCE WITH THE EXPORT ADMINISTRATION REGULATIONS. DIVISION CONTRARY TO U.S. LAW PROHIBITED.