

## Waterproof IP68 N Male (Plug) to N Female (Jack) Low Loss Cable Using LMR-400 Coax with Times Microwave Components



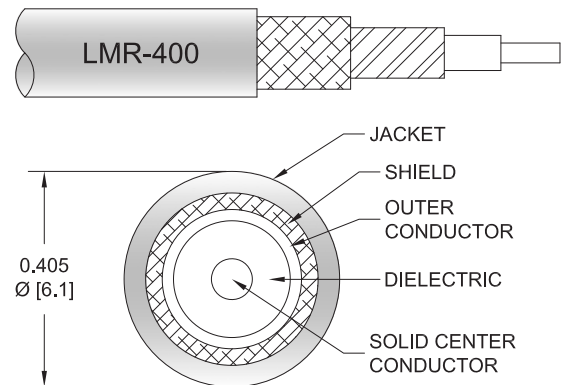
### PE3C3952/WP

#### Configuration

- Connector 1: N Male
- Connector 2: N Female
- Cable Type: LMR-400
- Coax Flex Type: Flexible

#### Features

- Max Frequency 6 GHz
- Shielding Effectivity > 90 dB
- 85% Phase Velocity
- Double Shielded
- PE Jacket
- Silicone Connector Boot
- IP68 Rated



#### Applications

- General Purpose
- Laboratory Use

#### Description

The Pasternack PE3C3952/WP is a weatherproof low loss cable assembly that comes with type N male connection with weatherproof boot on one end and type N female on the other. Pasternack's RF coaxial cable assembly products are designed for typical use, production, laboratory test and measurement, defense/military, aerial antenna towers, etc. The low loss cable has a 50 Ohm impedance and is specifically ready for quicker shipment than most in the industry can provide.

This weatherproof low loss RF cable assembly operates at a maximum frequency of 6 GHz. Our RF cable assembly has a PE jacket with 0.405 inches diameter. The type N male to type N female cable assembly PE3C3952/WP is built with LMR-400 coax, which has a flexible design. This RF cable assembly with 0.5 inches diameter has copper clad aluminum as cable's inner conducting material and PE (F) dielectric type. The weatherproof boot low loss cable can operate at a temperature range of -40 to 85 degrees C. Additional dimensions, specifications, and CAD drawings for this PE3C3952/WP low loss RF cable are available on our downloadable PDF datasheet.

Pasternack stocks a wide selection of weatherproof low loss cable assemblies that ship the same business day as ordered from our warehouse. Make your online purchase right now to take advantage of our same-day shipping. For further information on similar products, our expert technical support and knowledgeable sales team can help you get the ideal type N male to type N female cable assembly as per your requirements.

#### Electrical Specifications

Description	Minimum	Typical	Maximum	Units
Frequency Range	DC		6	GHz
VSWR			1.4:1	
Velocity of Propagation		85		%
RF Shielding	90			dB
Capacitance		23.9 [78.41]		pF/ft [pF/m]
Inductance		0.06 [0.2]		uH/ft [uH/m]

Waterproof IP68 N Male (Plug) to N Female (Jack) Low Loss Cable Using LMR-400 Coax with Times Microwave Components



**PE3C3952/WP**

**Electrical Specifications**

Description	Minimum	Typical	Maximum	Units
DC Resistance Inner Conductor		1.39 [4.56]		Ohms/1000ft [Ohms/Km]
DC Resistance Outer Conductor		1.65 [5.41]		Ohms/1000ft [Ohms/Km]
Dielectric Withstanding Voltage (DC)			2,500	Vdc
Jacket Spark			8,000	Vrms

**Specifications by Frequency**

Part Number	Length	Description	F1	F2	F3	F4	F5	Units	Weight (lbs)
			Frequency					MHz	
PE3C3952/WP	Custom Lengths Available	Insertion Loss (Typ.)	0.057	0.028	0.041	0.068	0.108	dB/ft	
			0.19	0.1	0.14	0.23	0.36	dB/m	
PE3C3952/WP-24	24 In	Insertion Loss (Typ.)	0.24	0.26	0.29	0.34	0.42	dB	0.0823
PE3C3952/WP-36	36 In	Insertion Loss (Typ.)	0.26	0.29	0.33	0.41	0.53	dB	0.89
PE3C3952/WP-48	48 In	Insertion Loss (Typ.)	0.28	0.32	0.37	0.48	0.64	dB	0.957
PE3C3952/WP-60	60 In	Insertion Loss (Typ.)	0.3	0.34	0.41	0.54	0.74	dB	1.024

The insertion loss data for the base model does not include loss due to the connectors. Each length includes insertion loss due to the connectors.

Loss due to Connector 1:	0.1 dB
Loss due to Connector 2:	0.1 dB
Base Weight:	0.756 pounds
Additional Weight per Inch:	0.00558 pounds

**Mechanical Specifications**

**Cable Assembly**

Width/Diameter	0.5 in [12.7 mm]
Weight	0.756 lbs [342.92 g]

**Cable**

Cable Type	LMR-400
Impedance	50 Ohms
Inner Conductor Type	Solid
Inner Conductor Material and Plating	Copper Clad Aluminum
Dielectric Type	PE (F)
Number of Shields	2
Shield Layer 1	Aluminum Tape
Shield Layer 2	Tinned Copper Braid
Jacket Material	PE
Jacket Diameter	0.405 in [10.29 mm]
One Time Minimum Bend Radius	1 in [25.4 mm]
Repeated Minimum Bend Radius	4 in [101.6 mm]
Bending Moment	0.5 lbs-ft [0.68 N-m]
Flat Plate Crush	40 lbs/in [0.71 Kg/mm]
Tensile Strength	160 lbs [72.57 Kg]

Waterproof IP68 N Male (Plug) to N Female (Jack) Low Loss Cable Using LMR-400 Coax with Times Microwave Components



**PE3C3952/WP**

**Connectors**

Description	Connector 1	Connector 2
Type	N Male	N Female
Option	Weatherproof Boot	
Specification		MIL-STD-348
Impedance	50 Ohms	50 Ohms
Configuration	Straight	Straight
Contact Material and Plating	Brass, Gold	Copper, Gold
Contact Plating Specification	50 µin minimum	
Dielectric Type	PTFE	PTFE
Outer Conductor Material and Plating		Brass, Tri-Metal
Body Material and Plating	Brass, Tri-Metal	Brass, Tri-Metal
Body Plating Specification	150 µin minimum	
Coupling Nut Material and Plating	Brass, Tri-Metal	
Coupling Nut Plating Specification	150 µin minimum	
Boot Material	Silicone	Silicone

**Environmental Specifications**

Operating Range Temperature	-40 to +85 deg C
Ingress Protection (IP) Rating	IP68

**Compliance Certifications** (see [product page](#) for current document)

**Plotted and Other Data**

Notes:  
Values at 25°C, sea level.

Waterproof IP68 N Male (Plug) to N Female (Jack) Low Loss Cable Using LMR-400 Coax with Times Microwave Components

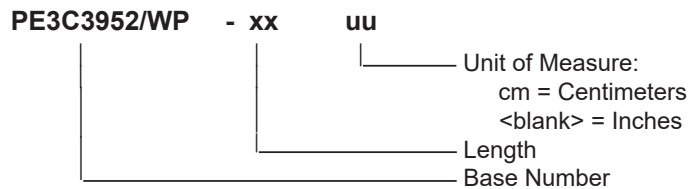


**PE3C3952/WP**

**Typical Performance Data**

**How to Order**

Part Number Configuration:



Example: PE3C3952/WP-12 = 12 inches long cable  
PE3C3952/WP-100cm = 100 cm long cable

Waterproof IP68 N Male (Plug) to N Female (Jack) Low Loss Cable Using LMR-400 Coax with Times Microwave Components from Pasternack Enterprises has same day shipment for domestic and International orders. Our RF, microwave and millimeter wave products maintain a 99.4% availability and are part of the broadest selection in the industry.

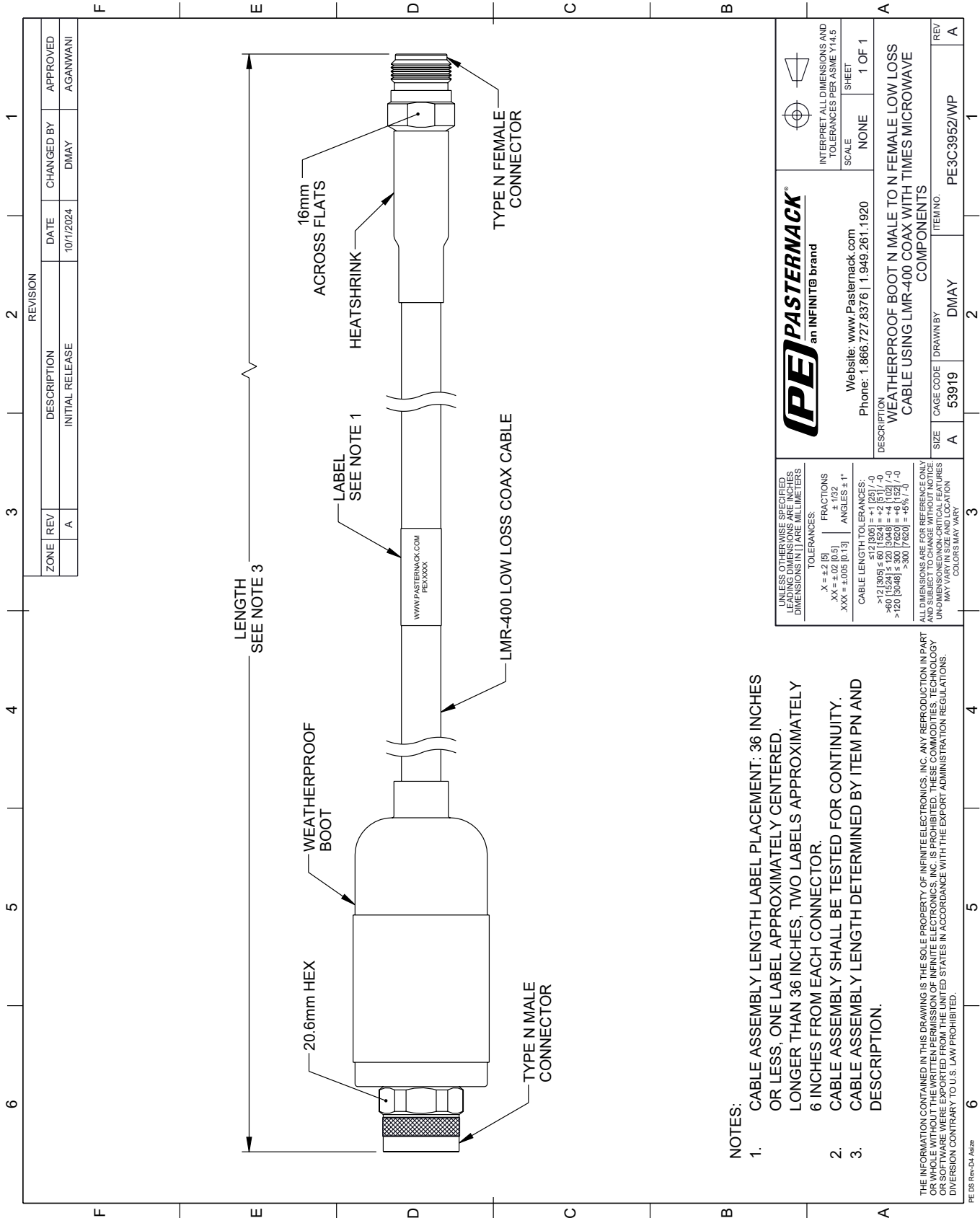
Click the following link (or enter part number in "SEARCH" on website) to obtain additional part information including price, inventory and certifications: [Waterproof IP68 N Male \(Plug\) to N Female \(Jack\) Low Loss Cable Using LMR®-400 Coax with Times Microwave Components PE3C3952/WP](https://www.pasternack.com/waterproof-ip68-n-male-plug-to-n-female-jack-low-loss-cable-using-lmr-400-pe3c3952-wp-p.aspx)

URL: <https://www.pasternack.com/waterproof-ip68-n-male-plug-to-n-female-jack-low-loss-cable-using-lmr-400-pe3c3952-wp-p.aspx>

The information contained within this document is accurate to the best of our knowledge and representative of the part described herein. It may be necessary to make modifications to the part and/or the documentation of the part in order to impliment improvements. Pasternack Enterprises reserves the right to make such changes as required. Unless otherwise stated, all specifications are nominal. Pasternack Enterprises does not make any representation or warranty regarding the suitability of the part described herein for any particular purpose, and Pasternack Enterprises does not assume liability arising out of the use of any part or document.

# PE3C3952/WP CAD Drawing

Waterproof IP68 N Male (Plug) to N Female (Jack) Low Loss Cable Using LMR-400 Coax with Times Microwave Components



 <b>PASTERNAK</b> an INFINITe brand		Website: <a href="http://www.Pasternack.com">www.Pasternack.com</a> Phone: 1.866.727.8376   1.949.261.1920	INTERPRET ALL DIMENSIONS AND TOLERANCES PER ASME Y14.5 SCALE: NONE SHEET: 1 OF 1
UNLESS OTHERWISE SPECIFIED, LEADING DIMENSIONS ARE IN INCHES AND TRAILING DIMENSIONS ARE IN MILLIMETERS.		TOLERANCES:	
.X = +.2 [-.5] .XX = +.02 [-.05] .XXX = +.005 [-.013]		FRACTIONS: ± 1/32 ANGLES: ± 1°	
CABLE LENGTH TOLERANCES: >12 [305] ≤ 60 [1524] = +1 [25] / -0 >60 [1524] ≤ 120 [3048] = +4 [102] / -0 >120 [3048] ≤ 300 [7620] = +5% / -0		ALL DIMENSIONS ARE FOR REFERENCE ONLY. UNLESS OTHERWISE SPECIFIED, DIMENSIONS/FEATURES MAY VARY IN SIZE AND LOCATION. COLORS MAY VARY.	
DESCRIPTION WEATHERPROOF BOOT N MALE TO N FEMALE LOW LOSS CABLE USING LMR-400 COAX WITH TIMES MICROWAVE COMPONENTS	SIZE A	CAGE CODE 53919	DRAWN BY DMAY
REV A	ITEM NO. PE3C3952/WP	SHEET 1 OF 1	APPROVED AGANWANI

- NOTES:
- CABLE ASSEMBLY LENGTH LABEL PLACEMENT: 36 INCHES OR LESS, ONE LABEL APPROXIMATELY CENTERED. LONGER THAN 36 INCHES, TWO LABELS APPROXIMATELY 6 INCHES FROM EACH CONNECTOR.
  - CABLE ASSEMBLY SHALL BE TESTED FOR CONTINUITY.
  - CABLE ASSEMBLY LENGTH DETERMINED BY ITEM PN AND DESCRIPTION.

THE INFORMATION CONTAINED IN THIS DRAWING IS THE SOLE PROPERTY OF INFINITE ELECTRONICS, INC. ANY REPRODUCTION IN PART OR WHOLE WITHOUT THE WRITTEN PERMISSION OF INFINITE ELECTRONICS, INC. IS PROHIBITED. THESE COMMODITIES, TECHNOLOGY OR SOFTWARE ARE EXPORTED FROM THE UNITED STATES IN ACCORDANCE WITH THE EXPORT ADMINISTRATION REGULATIONS. DIVERSION CONTRARY TO U.S. LAW PROHIBITED.