



SMA Male to SMP Female Right Angle Cable Using PE-P086 Coax

TECHNICAL DATA SHEET

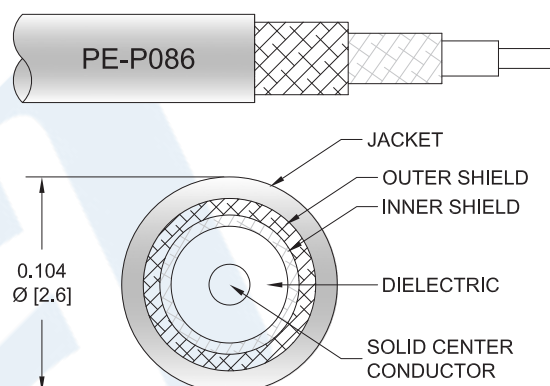
PE3C4237

Configuration

- Connector 1: SMA Male
- Connector 2: SMP Female Right Angle
- Cable Type: PE-P086
- Coax Flex Type: Flexible

Features

- Shielding Effectivity > 110 dB
- 70% Phase Velocity
- Double Shielded
- FEP Jacket



Applications

- General Purpose
- Laboratory Use

Description

Pasternack's PE3C4237 SMA male to SMP female right angle cable using PE-P086 coax is part of our full line of RF components available for same-day shipping. Pasternack's flexible RF cable assemblies are ideal for applications where tight bends and flexure are required. This Pasternack SMA to SMP cable assembly has a male to female gender configuration with 50 ohm flexible PE-P086 coax. The right angle SMP interface on the PE-P086 cable allows for easier connections in tight spaces. The double shielding of this Pasternack cable assembly provides excellent shielding effectiveness of better than 110 dB.

Custom versions of most RF cable assemblies can be built and shipped same day. Custom cable assembly lengths can be obtained by specifying the desired length on the web site at time of order or by contacting a sales representative. Other available RF cable assembly value added services include connector orientation or clocking, heat shrink booting and custom labeling. RF testing can also be performed to document the electrical performance of your cable assembly.

Electrical Specifications

Description	Minimum	Typical	Maximum	Units
Velocity of Propagation		70		%
RF Shielding	110			dB
Capacitance		29.4 [96.46]		pF/ft [pF/m]

Mechanical Specifications

Cable Assembly

Weight

0.047 lbs [21.32 g]

Click the following link (or enter part number in "SEARCH" on website) to obtain additional part information including price, inventory and certifications: [SMA Male to SMP Female Right Angle Cable Using PE-P086 Coax PE3C4237](#)



SMA Male to SMP Female Right Angle
Cable Using PE-P086 Coax

TECHNICAL DATA SHEET

PE3C4237

Cable

Cable Type	PE-P086
Impedance	50 Ohms
Inner Conductor Type	Solid
Inner Conductor Material and Plating	Copper Clad Steel, Silver
Dielectric Type	PTFE
Number of Shields	2
Shield Layer 1	Silver Plated Copper Tape
Shield Layer 2	Silver Plated Copper Braid
Jacket Material	FEP, Blue
Jacket Diameter	0.104 in [2.64 mm]
Repeated Minimum Bend Radius	0.5 in [12.7 mm]

Connectors

Description	Connector 1	Connector 2
Type	SMA Male Threaded	SMP Female Right Angle Push-On
Specification		MIL-STD-348
Impedance	50 Ohms	50 Ohms
Contact Material and Plating		Beryllium Copper, Gold
Contact Plating Specification		MIL-G-45204
Dielectric Type		PTFE
Body Material and Plating		Beryllium Copper, Gold
Body Plating Specification		MIL-G-45204

Compliance Certifications (see [product page](#) for current document)

Plotted and Other Data

Notes:

Click the following link (or enter part number in "SEARCH" on website) to obtain additional part information including price, inventory and certifications: [SMA Male to SMP Female Right Angle Cable Using PE-P086 Coax PE3C4237](#)



SMA Male to SMP Female Right Angle Cable Using PE-P086 Coax

TECHNICAL DATA SHEET

PE3C4237

How to Order

Part Number Configuration:

PE3C4237

- **xx**

uu

Unit of Measure:
cm = Centimeters
<blank> = Inches
Length
Base Number

Example: PE3C4237-12 = 12 inches long cable
PE3C4237-100cm = 100 cm long cable

SMA Male to SMP Female Right Angle Cable Using PE-P086 Coax from Pasternack Enterprises has same day shipment for domestic and International orders. Our RF, microwave and millimeter wave products maintain a 99.4% availability and are part of the broadest selection in the industry.

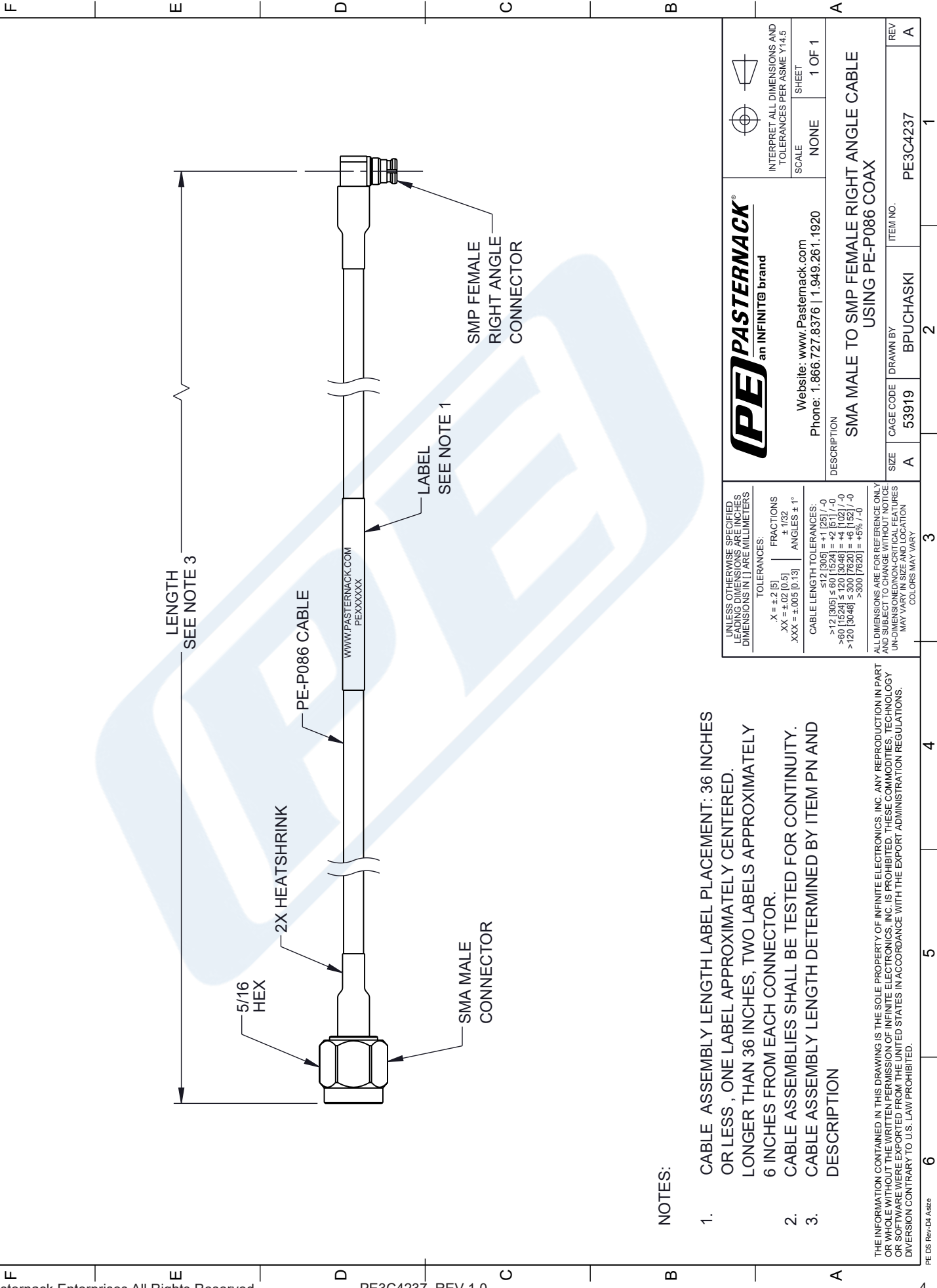
Click the following link (or enter part number in "SEARCH" on website) to obtain additional part information including price, inventory and certifications: [SMA Male to SMP Female Right Angle Cable Using PE-P086 Coax PE3C4237](#)

URL: <https://www.pasternack.com/sma-male-to-smp-female-cable-using-pe-p086-pe3c4237-p.aspx>

The information contained in this document is accurate to the best of our knowledge and representative of the part described herein. It may be necessary to make modifications to the part and/or the documentation of the part, in order to implement improvements. Pasternack reserves the right to make such changes as required. Unless otherwise stated, all specifications are nominal. Pasternack does not make any representation or warranty regarding the suitability of the part described herein for any particular purpose, and Pasternack does not assume any liability arising out of the use of any part or documentation.

PE3C4237 CAD Drawing

SMA Male to SMP Female Right Angle Cable Using PE-P086 Coax





NOTES:

- 1. CABLE ASSEMBLY LENGTH LABEL PLACEMENT: 36 INCHES OR LESS , ONE LABEL APPROXIMATELY CENTERED. LONGER THAN 36 INCHES, TWO LABELS APPROXIMATELY 6 INCHES FROM EACH CONNECTOR.
- 2. CABLE ASSEMBLIES SHALL BE TESTED FOR CONTINUITY.
- 3. CABLE ASSEMBLY LENGTH DETERMINED BY ITEM PN AND DESCRIPTION

THE INFORMATION CONTAINED IN THIS DRAWING IS THE SOLE PROPERTY OF INFINITE ELECTRONICS, INC. ANY REPRODUCTION IN PART OR WHOLE WITHOUT THE WRITTEN PERMISSION OF INFINITE ELECTRONICS, INC. IS PROHIBITED. THESE COMMODITIES, TECHNOLOGY OR SOFTWARE WERE EXPORTED FROM THE UNITED STATES IN ACCORDANCE WITH THE EXPORT ADMINISTRATION REGULATIONS. DIVERSION CONTRARY TO U.S. LAW PROHIBITED.

ZONE		REVISION		APPROVED BY	
REV.	DESCRIPTION	DATE	CHANGED BY		
A	INITIAL RELEASE	11/16/2023	BPUCHASKI	AGANWANI	

 an INFINIT@ brand				INTERPRET ALL DIMENSIONS AND TOLERANCES PER ASME Y14.5	
Website: www.Pasternack.com Phone: 1.866.727.8376 1.949.261.1920		SCALE		SHEET	
DESCRIPTION		NONE		1 OF 1	
SMA MALE TO SMP FEMALE RIGHT ANGLE CABLE USING PE-P086 COAX		CAGE CODE		ITEM NO.	
SIZE		A 53919		BPUCHASKI	
UNLESS OTHERWISE SPECIFIED, LEADING DIMENSIONS ARE IN INCHES. DIMENSIONS IN [] ARE MILLIMETERS.		TOLERANCES:		COLORS MAY VARY	
		X = ±.2 [5]		FRACTIONS	
		XX = ±.02 [0.5]		± 1/32	
		XXX = ±.005 [0.13]		ANGLES ± 1°	
		CABLE LENGTH TOLERANCES:		ALL DIMENSIONS ARE FOR REFERENCE ONLY. UNDIMENSIONED NON-CRITICAL FEATURES MAY VARY IN SIZE AND LOCATION.	
		>12 [305] ≤ 517 [1309] = ±.125 / -0			
		>517 [1309] ≤ 120 [3048] = ±.25 / -0			
		>60 [1524] ≤ 120 [3048] = +4 [102] / -0			
		>120 [3048] ≤ 300 [7620] = +6 [152] / -0			
		>300 [7620] = +5% / -0			