



## SMA Male to Straight Cut Lead Low Loss Cable Using PE-P195 Coax

### RF Cable Assemblies Technical Data Sheet

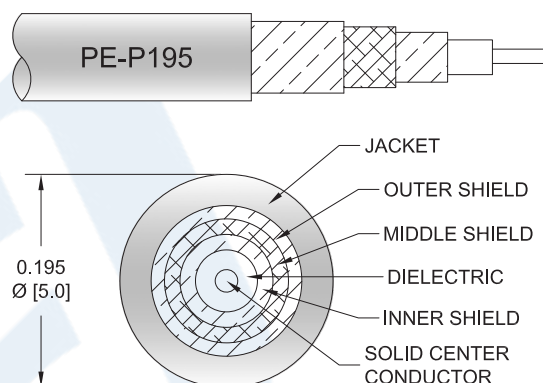
**PE3C6116**

#### Configuration

- Connector 1: SMA Male
- Connector 2: Straight Cut Lead
- Cable Type: PE-P195

#### Features

- 70% Phase Velocity
- Triple Shielded
- FEP Jacket



#### Applications

- General Purpose
- Laboratory Use

#### Description

Pasternack's PE3C6116 50 ohm SMA male to straight cut lead cable using PE-P195 coax is part of our full line of RF components available for same-day shipping. Pasternack's flexible RF cable assemblies are ideal for applications where tight bends and flexure are required. The triple shielding of this Pasternack cable assembly provides excellent shielding effectiveness.

Custom versions of most RF cable assemblies can be built and shipped same day. Custom cable assembly lengths can be obtained by specifying the desired length on the web site at time of order or by contacting a sales representative. Other available RF cable assembly value added services include connector orientation or clocking, heat shrink booting and custom labeling. RF testing can also be performed to document the electrical performance of your cable assembly.

#### Electrical Specifications

Description	Minimum	Typical	Maximum	Units
Velocity of Propagation		70		%
Capacitance		29 [95.14]		pF/ft [pF/m]

#### Mechanical Specifications

##### Cable Assembly

Weight 0.054 lbs [24.49 g]

##### Cable

Cable Type PE-P195  
Impedance 50 Ohms

Click the following link (or enter part number in "SEARCH" on website) to obtain additional part information including price, inventory and certifications: [SMA Male to Straight Cut Lead Low Loss Cable Using PE-P195 Coax PE3C6116](#)



## SMA Male to Straight Cut Lead Low Loss Cable Using PE-P195 Coax

### RF Cable Assemblies Technical Data Sheet

**PE3C6116**

Inner Conductor Type	Solid
Inner Conductor Material and Plating	Copper Clad Steel, Silver
Dielectric Type	PTFE
Number of Shields	3
Shield Layer 1	Silver Plated Copper Braid
Shield Layer 2	Aluminum Tape
Shield Layer 3	Silver Plated Copper Braid
Jacket Material	FEP, Tan
Jacket Diameter	0.195 in [4.95 mm]
Repeated Minimum Bend Radius	1 in [25.4 mm]

#### Connectors

Description	Connector 1	Connector 2
Type	SMA Male	Straight Cut Lead
Specification	MIL-STD-348A	
Impedance	50 Ohms	0 Ohms
Contact Material and Plating	Brass, Gold	
Contact Plating Specification	50 µin minimum	
Dielectric Type	PTFE	
Body Material and Plating	Brass, Nickel	
Body Plating Specification	100 µin minimum	
Coupling Nut Material and Plating	Brass, Nickel	
Coupling Nut Plating Specification	100 µin minimum	
Hex Size	5/16 inch	
Torque	3 in-lbs [0.34 Nm]	

#### Environmental Specifications

##### Temperature

Operating Range -55 to +200 deg C

**Compliance Certifications** (see [product page](#) for current document)

#### Plotted and Other Data

Notes:

Click the following link (or enter part number in "SEARCH" on website) to obtain additional part information including price, inventory and certifications: [SMA Male to Straight Cut Lead Low Loss Cable Using PE-P195 Coax PE3C6116](#)



## SMA Male to Straight Cut Lead Low Loss Cable Using PE-P195 Coax

### RF Cable Assemblies Technical Data Sheet

**PE3C6116**

#### How to Order

Part Number Configuration:

**PE3C6116**

- **xx**

**uu**

Unit of Measure:  
cm = Centimeters  
<blank> = Inches  
Length  
Base Number

Example: PE3C6116-12 = 12 inches long cable  
PE3C6116-100cm = 100 cm long cable

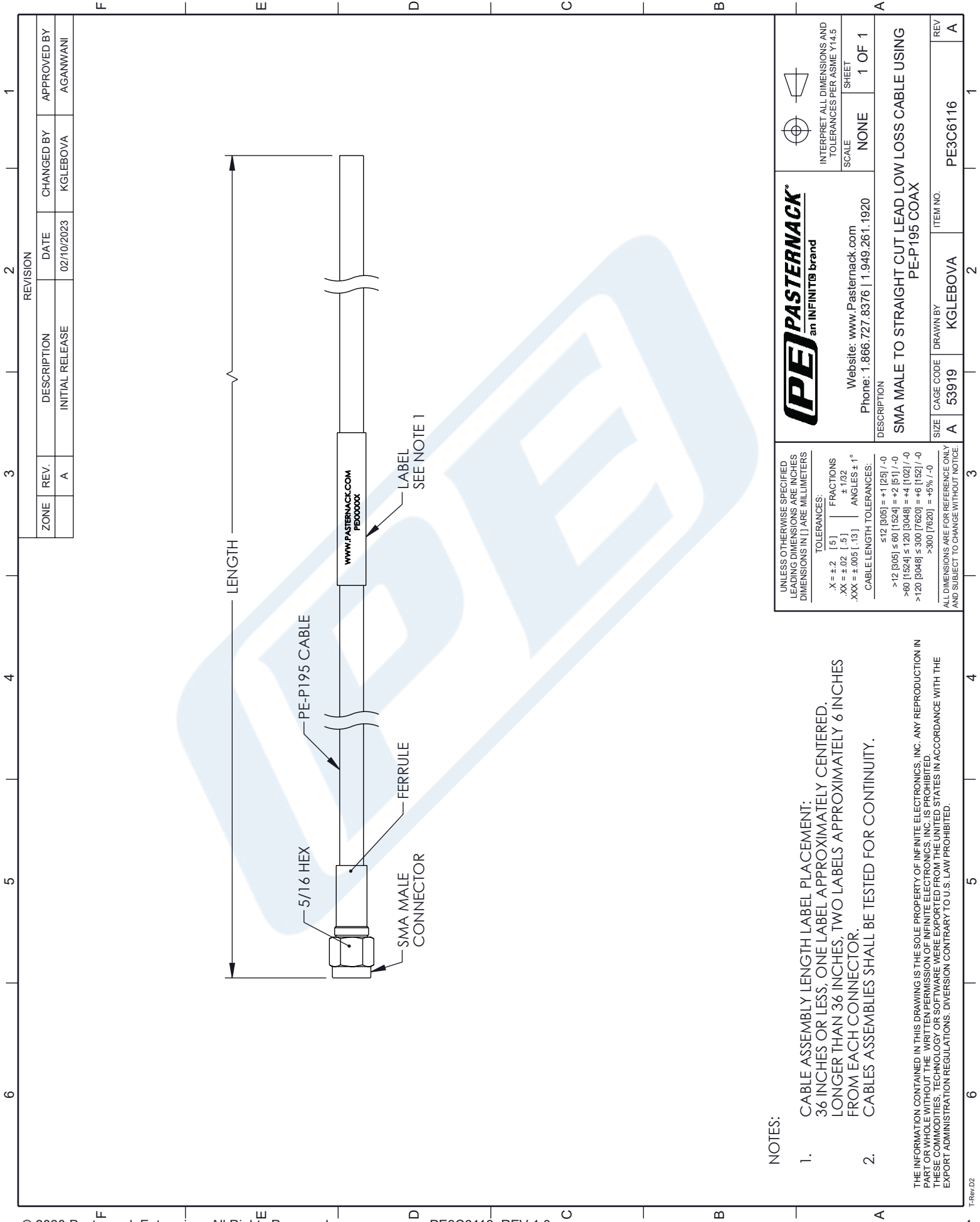
SMA Male to Straight Cut Lead Low Loss Cable Using PE-P195 Coax from Pasternack Enterprises has same day shipment for domestic and International orders. Our RF, microwave and millimeter wave products maintain a 99.4% availability and are part of the broadest selection in the industry.

Click the following link (or enter part number in "SEARCH" on website) to obtain additional part information including price, inventory and certifications: [SMA Male to Straight Cut Lead Low Loss Cable Using PE-P195 Coax PE3C6116](https://www.pasternack.com/sma-male-to-straight-cut-lead-low-loss-cable-using-pe-p195-pe3c6116-p.aspx)

URL: <https://www.pasternack.com/sma-male-to-straight-cut-lead-low-loss-cable-using-pe-p195-pe3c6116-p.aspx>

The information contained in this document is accurate to the best of our knowledge and representative of the part described herein. It may be necessary to make modifications to the part and/or the documentation of the part, in order to implement improvements. Pasternack reserves the right to make such changes as required. Unless otherwise stated, all specifications are nominal. Pasternack does not make any representation or warranty regarding the suitability of the part described herein for any particular purpose, and Pasternack does not assume any liability arising out of the use of any part or documentation.



PE3C6116 CAD Drawing  
SMA Male to Straight Cut Lead Low Loss Cable Using PE-P195 Coax



NOTES:

- CABLE ASSEMBLY LENGTH LABEL PLACEMENT:  
36 INCHES OR LESS, ONE LABEL APPROXIMATELY CENTERED.  
LONGER THAN 36 INCHES, TWO LABELS APPROXIMATELY 6 INCHES  
FROM EACH CONNECTOR.
- CABLES ASSEMBLIES SHALL BE TESTED FOR CONTINUITY.

THE INFORMATION CONTAINED IN THIS DRAWING IS THE SOLE PROPERTY OF INFINITE ELECTRONICS, INC. ANY REPRODUCTION IN  
PART OR WHOLE WITHOUT THE WRITTEN PERMISSION OF INFINITE ELECTRONICS, INC. IS PROHIBITED.  
THESE COMMODITIES, TECHNOLOGY OR SOFTWARE WERE EXPORTED FROM THE UNITED STATES IN ACCORDANCE WITH THE  
EXPORT ADMINISTRATION REGULATIONS. DIVERSION CONTRARY TO U.S. LAW PROHIBITED.

 <b>PASTERNAK</b> an INFINITE brand Website: <a href="http://www.Pasternack.com">www.Pasternack.com</a> Phone: 1.866.727.8376   1.949.261.1920	 INTERPRET ALL DIMENSIONS AND TOLERANCES PER ASME Y14.5	
	SCALE	NONE
SHEET		1 OF 1
DESCRIPTION		
SMA MALE TO STRAIGHT CUT LEAD LOW LOSS CABLE USING PE-P195 COAX		
SIZE	CAGE CODE	ITEM NO.
A	53919	KGLEBOVA
DRAWN BY		PE3C6116
REV		A