



## SMA Male to Trimmed Lead Cable Using PE-P300LL Coax

### TECHNICAL DATA SHEET

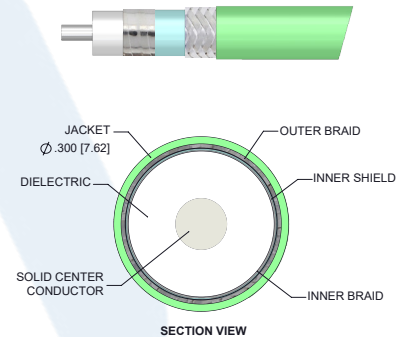
**PE3C6322**

#### Configuration

- Connector 1: SMA Male
- Connector 2: Trimmed Lead
- Cable Type: PE-P300LL
- Coax Flex Type: Flexible

#### Features

- Shielding Effectivity > 95 dB
- 83% Phase Velocity
- Triple Shielded
- FEP Jacket



#### Applications

- General Purpose
- Laboratory Use

#### Description

Pasternack's PE3C6322 50 ohm SMA male to trimmed lead cable using PE-P300LL coax is part of our full line of RF components available for same-day shipping. Pasternack's flexible RF cable assemblies are ideal for applications where tight bends and flexure are required. The triple shielding of this Pasternack cable assembly provides excellent shielding effectiveness of better than 95 dB.

Custom versions of most RF cable assemblies can be built and shipped same day. Custom cable assembly lengths can be obtained by specifying the desired length on the web site at time of order or by contacting a sales representative. Other available RF cable assembly value added services include connector orientation or clocking, heat shrink booting and custom labeling. RF testing can also be performed to document the electrical performance of your cable assembly.

#### Electrical Specifications

Description	Minimum	Typical	Maximum	Units
Velocity of Propagation		83		%
RF Shielding	95			dB
Capacitance		25 [82.02]		pF/ft [pF/m]

#### Mechanical Specifications

##### Cable Assembly

Weight 0.147 lbs [66.68 g]

Click the following link (or enter part number in "SEARCH" on website) to obtain additional part information including price, inventory and certifications: [SMA Male to Trimmed Lead Cable Using PE-P300LL Coax PE3C6322](#)



## SMA Male to Trimmed Lead Cable Using PE-P300LL Coax

### TECHNICAL DATA SHEET

**PE3C6322**

#### Cable

Cable Type	PE-P300LL
Impedance	50 Ohms
Inner Conductor Type	Solid
Inner Conductor Material and Plating	Copper, Silver
Dielectric Type	PTFE
Number of Shields	3
Shield Layer 1	Silver Plated Copper Tape
Shield Layer 2	Aluminum Polyester
Shield Layer 3	Silver Plated Copper Wire
Jacket Material	FEP, Green
Jacket Diameter	0.3 in [7.62 mm]
Repeated Minimum Bend Radius	1.5 in [38.1 mm]

#### Connectors

Description	Connector 1	Connector 2
Type	SMA Male Threaded	Trimmed Lead Other
Specification	MIL-STD-348B	
Impedance	50 Ohms	0 Ohms
Mating Cycles	500	
Contact Material and Plating	Beryllium Copper, Gold over Nickel	
Contact Plating Specification	50 µin minimum	
Dielectric Type	PTFE	
Body Material and Plating	Passivated Stainless Steel	
Body Plating Specification	SAE-AMS-2700	
Coupling Nut Material and Plating	Passivated Stainless Steel	
Coupling Nut Plating Specification	SAE-AMS-2700	
Hex Size	5/16 inch	
Torque	7 in-lbs [0.79 Nm]	

**Compliance Certifications** (see [product page](#) for current document)

#### Plotted and Other Data

Notes:

Click the following link (or enter part number in "SEARCH" on website) to obtain additional part information including price, inventory and certifications: [SMA Male to Trimmed Lead Cable Using PE-P300LL Coax PE3C6322](#)



## SMA Male to Trimmed Lead Cable Using PE-P300LL Coax

### TECHNICAL DATA SHEET

**PE3C6322**

#### How to Order

Part Number Configuration:

**PE3C6322**

- **xx**

**uu**

Unit of Measure:  
cm = Centimeters  
<blank> = Inches  
Length  
Base Number

Example: PE3C6322-12 = 12 inches long cable  
PE3C6322-100cm = 100 cm long cable

SMA Male to Trimmed Lead Cable Using PE-P300LL Coax from Pasternack Enterprises has same day shipment for domestic and International orders. Our RF, microwave and millimeter wave products maintain a 99.4% availability and are part of the broadest selection in the industry.

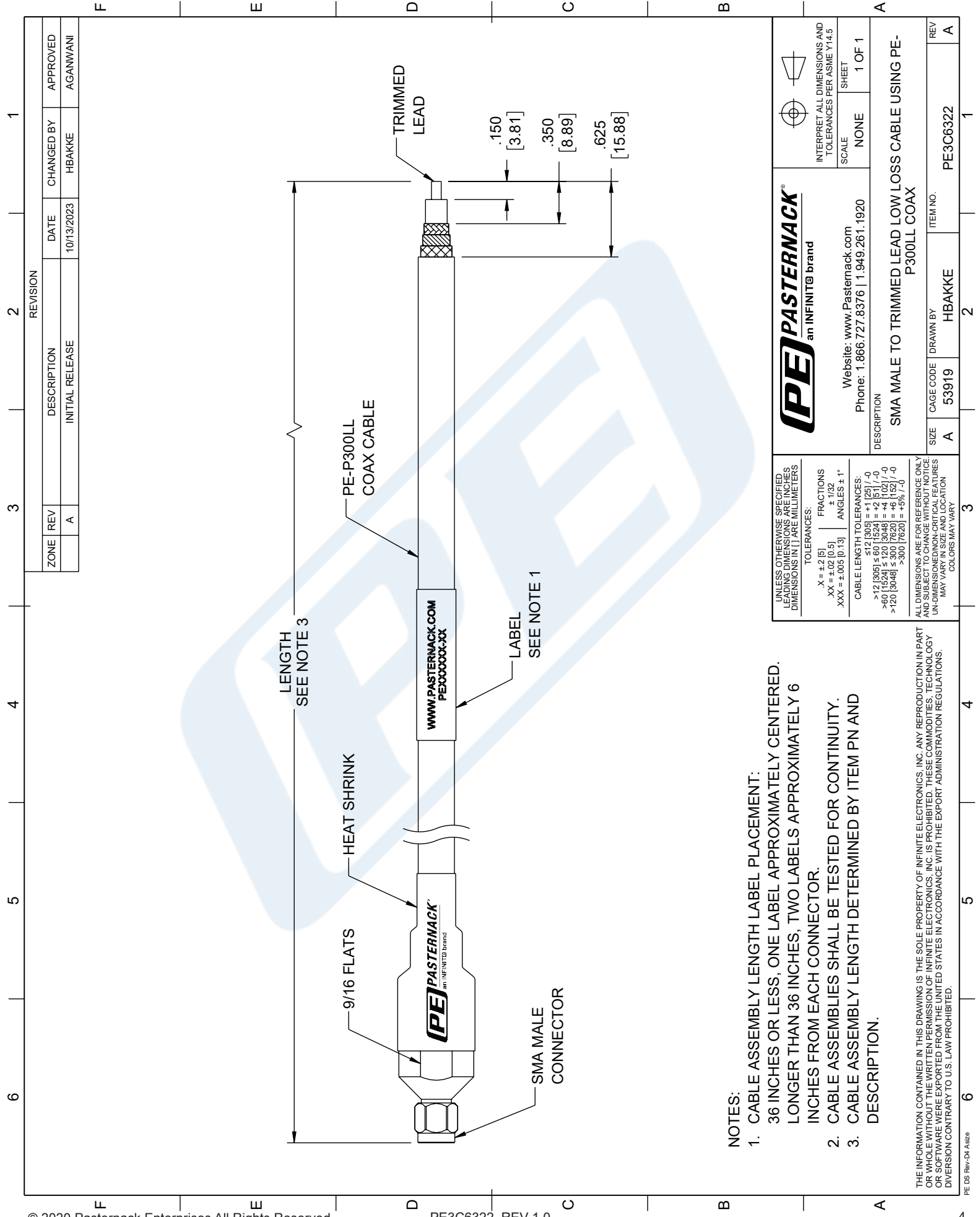
Click the following link (or enter part number in "SEARCH" on website) to obtain additional part information including price, inventory and certifications: [SMA Male to Trimmed Lead Cable Using PE-P300LL Coax PE3C6322](#)

URL: <https://www.pasternack.com/sma-male-trimmed-lead-sexless-pe-p300ll-cable-assembly-pe3c6322-p.aspx>

The information contained in this document is accurate to the best of our knowledge and representative of the part described herein. It may be necessary to make modifications to the part and/or the documentation of the part, in order to implement improvements. Pasternack reserves the right to make such changes as required. Unless otherwise stated, all specifications are nominal. Pasternack does not make any representation or warranty regarding the suitability of the part described herein for any particular purpose, and Pasternack does not assume any liability arising out of the use of any part or documentation.

# PE3C6322 CAD Drawing

SMA Male to Trimmed Lead Cable Using PE-P300LL Coax



**NOTES:**

1. CABLE ASSEMBLY LENGTH LABEL PLACEMENT: 36 INCHES OR LESS, ONE LABEL APPROXIMATELY CENTERED, LONGER THAN 36 INCHES, TWO LABELS APPROXIMATELY 6 INCHES FROM EACH CONNECTOR.
2. CABLE ASSEMBLIES SHALL BE TESTED FOR CONTINUITY.
3. CABLE ASSEMBLY LENGTH DETERMINED BY ITEM PN AND DESCRIPTION.

THE INFORMATION CONTAINED IN THIS DRAWING IS THE SOLE PROPERTY OF INFINITE ELECTRONICS, INC. ANY REPRODUCTION IN PART OR WHOLE WITHOUT THE WRITTEN PERMISSION OF INFINITE ELECTRONICS, INC. IS PROHIBITED. THESE COMMODITIES, TECHNOLOGY OR SOFTWARE WERE EXPORTED FROM THE UNITED STATES IN ACCORDANCE WITH THE EXPORT ADMINISTRATION REGULATIONS. DIVERSION CONTRARY TO U.S. LAW PROHIBITED.

UNLESS OTHERWISE SPECIFIED, LEADERS DIMENSIONS ARE IN INCHES. DIMENSIONS IN [ ] ARE MILLIMETERS.	
TOLERANCES:	FRACTIONS
.X = ±.2 [5]	.XX = ±.02 [0.5]
.XX = ±.02 [0.5]	.XXX = ±.005 [0.13]
.XXX = ±.005 [0.13]	ANGLES ± 1°
CABLE LENGTH TOLERANCES:	
>12 [305] ≤ 60 [1524]	± 1/32 [0.762]
>60 [1524] ≤ 120 [3048]	± 1/16 [1.588]
>120 [3048] ≤ 300 [7620]	± 1/8 [3.175]
>300 [7620]	± 1/4 [6.35]

ALL DIMENSIONS ARE FOR REFERENCE ONLY. UNDIMENSIONED CRITICAL FEATURES MAY VARY IN SIZE AND LOCATION. COLORS MAY VARY.

**PASTERNAK**  
an INFINIT@ brand

Website: [www.Pasternack.com](http://www.Pasternack.com)  
Phone: 1.866.727.8376 | 1.949.261.1920

INTERPRET ALL DIMENSIONS AND TOLERANCES PER ASME Y14.5

SCALE: NONE

SHEET: 1 OF 1

---

DESCRIPTION: SMA MALE TO TRIMMED LEAD LOW LOSS CABLE USING PE-P300LL COAX

SIZE	CAGE CODE	DRAWN BY	ITEM NO.	REV
A	53919	HBAKKE	PE3C6322	A

REVISION				
ZONE	REV	DESCRIPTION	DATE	APPROVED
	A	INITIAL RELEASE	10/13/2023	AGANWANI
				HBAKKE