



BNC Male to BNC Female Cable Using RG213 Coax

RF Cable Assemblies Technical Data Sheet

PE3C6449

Configuration

- Connector 1: BNC Male
- Connector 2: BNC Female
- Cable Type: RG213

Features

- Max Frequency 1 GHz
- 66% Phase Velocity
- PVC Jacket

Applications

- General Purpose
- Laboratory Use

Description

Pasternack's PE3C6449 BNC male to BNC female cable using RG213 coax is part of our full line of RF components available for same-day shipping. Pasternack's flexible RF cable assemblies are ideal for applications where tight bends and flexure are required. This Pasternack BNC to BNC cable assembly has a male to female gender configuration with 50 ohm flexible RG213 coax. The PE3C6449 BNC male to BNC female cable assembly operates to 1 GHz.

Custom versions of most RF cable assemblies can be built and shipped same day. Custom cable assembly lengths can be obtained by specifying the desired length on the web site at time of order or by contacting a sales representative. Other available RF cable assembly value added services include connector orientation or clocking, heat shrink booting and custom labeling. RF testing can also be performed to document the electrical performance of your cable assembly.

Click the following link (or enter part number in "SEARCH" on website) to obtain additional part information including price, inventory and certifications: [BNC Male to BNC Female Cable Using RG213 Coax PE3C6449](#)



BNC Male to BNC Female Cable Using RG213 Coax

RF Cable Assemblies Technical Data Sheet

PE3C6449

Electrical Specifications

Description	Minimum	Typical	Maximum	Units
Frequency Range	DC		1,000	MHz
VSWR			1.4:1	
Velocity of Propagation		66		%
Capacitance		30.8 [101.05]		pF/ft [pF/m]
Operating Voltage (AC)			500	Vrms

Specifications by Frequency

Description	F1	F2	F3	F4	F5	Units
Frequency	100	250	500	1,000		MHz
Insertion Loss (Typ.)	0.021	0.034	0.053	0.08		dB/ft
	0.07	0.11	0.17	0.26		dB/m

Electrical Specification Notes:

Insertion Loss does not include the loss of the connectors. Insertion Loss is estimated as 0.1 dB per connector.

Mechanical Specifications

Cable Assembly

Weight 0.279 lbs [126.55 g]

Cable

Cable Type RG213
 Impedance 50 Ohms
 Inner Conductor Type Stranded
 Inner Conductor Material and Plating Copper
 Dielectric Type PE
 Number of Shields 1
 Shield Layer 1 Copper Braid
 Jacket Material PVC, Black
 Jacket Diameter 0.405 in [10.29 mm]
 Repeated Minimum Bend Radius 1.6 in [40.64 mm]

Click the following link (or enter part number in "SEARCH" on website) to obtain additional part information including price, inventory and certifications: [BNC Male to BNC Female Cable Using RG213 Coax PE3C6449](#)



BNC Male to BNC Female Cable Using RG213 Coax

RF Cable Assemblies Technical Data Sheet

PE3C6449

Connectors

Description	Connector 1	Connector 2
Type	BNC Male	BNC Female
Specification	MIL-STD-348A	MIL-STD-348
Impedance	50 Ohms	50 Ohms
Contact Material and Plating	Brass, Gold	Brass, Gold over Nickel
Contact Plating Specification		MIL-G-45204
Dielectric Type	PTFE	PTFE
Body Material and Plating	Brass, Nickel	Brass, Nickel
Body Plating Specification	100 µin minimum	QQ-N-290
Coupling Nut Material and Plating	Brass, Nickel	
Coupling Nut Plating Specification	100 µin minimum	

Compliance Certifications (see [product page](#) for current document)

Plotted and Other Data

Notes:

- Values at 25° C, sea level

Click the following link (or enter part number in "SEARCH" on website) to obtain additional part information including price, inventory and certifications: [BNC Male to BNC Female Cable Using RG213 Coax PE3C6449](#)



BNC Male to BNC Female Cable Using RG213 Coax

RF Cable Assemblies Technical Data Sheet

PE3C6449

How to Order

Part Number Configuration:

PE3C6449

- **xx**

uu

Unit of Measure:
cm = Centimeters
<blank> = Inches
Length
Base Number

Example: PE3C6449-12 = 12 inches long cable
PE3C6449-100cm = 100 cm long cable

BNC Male to BNC Female Cable Using RG213 Coax from Pasternack Enterprises has same day shipment for domestic and International orders. Our RF, microwave and millimeter wave products maintain a 99.4% availability and are part of the broadest selection in the industry.

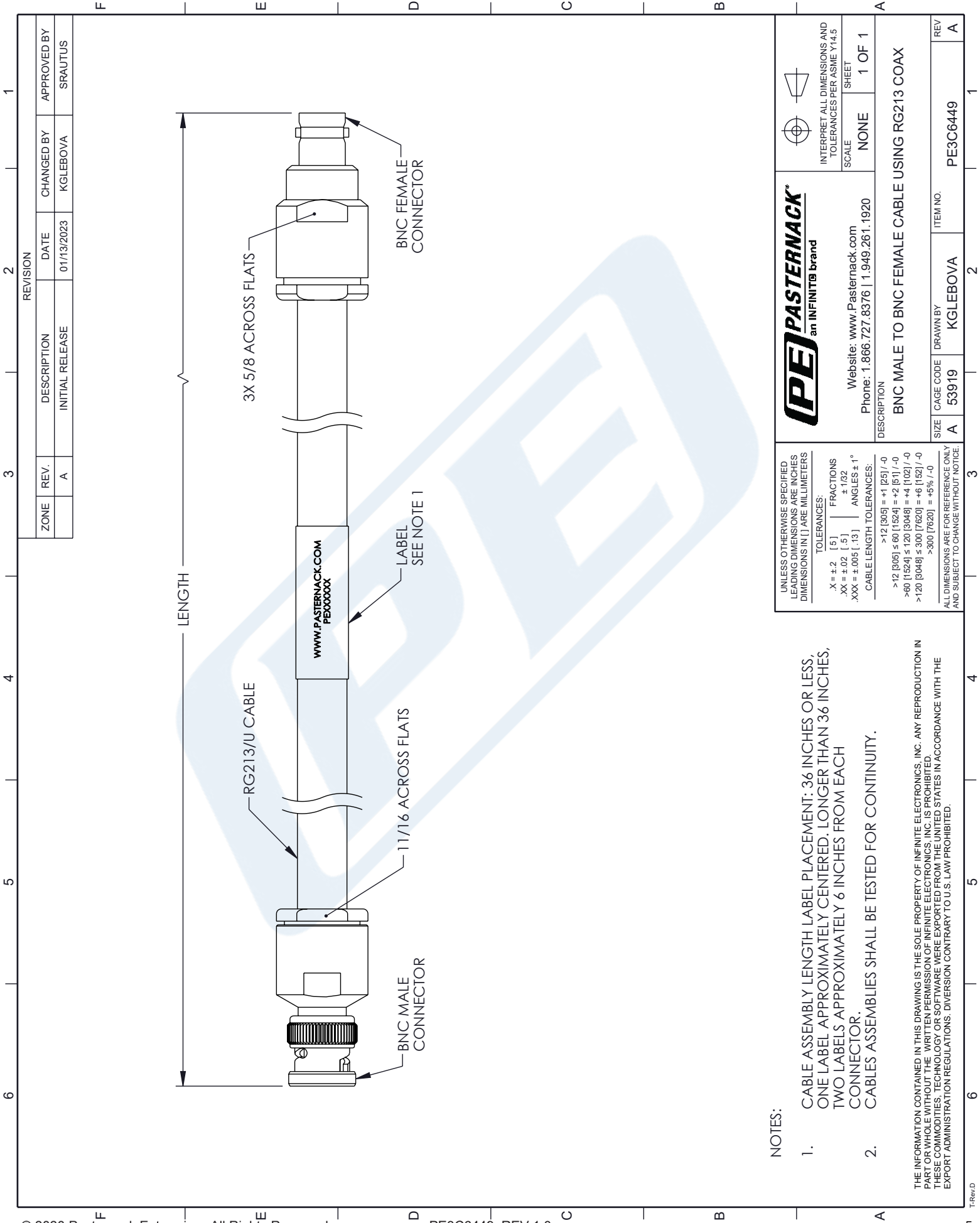
Click the following link (or enter part number in "SEARCH" on website) to obtain additional part information including price, inventory and certifications: [BNC Male to BNC Female Cable Using RG213 Coax PE3C6449](#)

URL: <https://www.pasternack.com/bnc-male-to-bnc-female-cable-using-rg213-pe3c6449-p.aspx>

The information contained in this document is accurate to the best of our knowledge and representative of the part described herein. It may be necessary to make modifications to the part and/or the documentation of the part, in order to implement improvements. Pasternack reserves the right to make such changes as required. Unless otherwise stated, all specifications are nominal. Pasternack does not make any representation or warranty regarding the suitability of the part described herein for any particular purpose, and Pasternack does not assume any liability arising out of the use of any part or documentation.

PE3C6449 CAD Drawing

BNC Male to BNC Female Cable Using RG213 Coax



NOTES:

- 1. CABLE ASSEMBLY LENGTH LABEL PLACEMENT: 36 INCHES OR LESS, ONE LABEL APPROXIMATELY CENTERED. LONGER THAN 36 INCHES, TWO LABELS APPROXIMATELY 6 INCHES FROM EACH CONNECTOR.
- 2. CABLES ASSEMBLIES SHALL BE TESTED FOR CONTINUITY.

THE INFORMATION CONTAINED IN THIS DRAWING IS THE SOLE PROPERTY OF INFINITE ELECTRONICS, INC. ANY REPRODUCTION IN PART OR WHOLE WITHOUT THE WRITTEN PERMISSION OF INFINITE ELECTRONICS, INC. IS PROHIBITED. THESE COMMODITIES, TECHNOLOGY OR SOFTWARE WERE EXPORTED FROM THE UNITED STATES IN ACCORDANCE WITH THE EXPORT ADMINISTRATION REGULATIONS. DIVERSION CONTRARY TO U.S. LAW PROHIBITED.

 PASTERNAK an INFINITE brand	 INTERPRET ALL DIMENSIONS AND TOLERANCES PER ASME Y14.5	
	SCALE	NONE
	SHEET	1 OF 1
Website: www.Pasternack.com Phone: 1.866.727.8376 1.949.261.1920		
DESCRIPTION BNC MALE TO BNC FEMALE CABLE USING RG213 COAX		
SIZE	CAGE CODE	ITEM NO.
A	53919	PE3C6449
DRAWN BY KGLEBOVA		REV A

UNLESS OTHERWISE SPECIFIED LEADING DIMENSIONS ARE INCHES DIMENSIONS IN [] ARE MILLIMETERS		
TOLERANCES:	FRACTIONS	ANGLES ± 1°
X = ±.2 [.5]	±.1/32	
.XX = ±.02 [.5]		
.XXX = ±.005 [.13]		
CABLE LENGTH TOLERANCES:		
>12 [305] = +1 [25] / -0		
>60 [1524] = +2 [51] / -0		
>120 [3048] = +4 [102] / -0		
>300 [7620] = +6 [152] / -0		
>300 [7620] = +5% / -0		
ALL DIMENSIONS ARE FOR REFERENCE ONLY AND SUBJECT TO CHANGE WITHOUT NOTICE.		