



N Female to Straight Cut Lead Low PIM
Cable Using 1/2 inch Flexible Coax

RF Cable Assemblies Technical Data Sheet

PE3C6999

Configuration

- Connector 1: N Female
- Connector 2: Straight Cut Lead
- Cable Type: 1/2" Flexible

Features

- Shielding Effectivity > 120 dB
- 88% Phase Velocity
- PE Jacket

Applications

- General Purpose
- Laboratory Use
- Low PIM Applications

Description

Pasternack's PE3C6999 50 ohm type N female to straight cut lead cable using 1/2 inch flexible coax is part of our full line of RF components available for same-day shipping. Pasternack's corrugated RF cable assemblies are ideal for applications where durability and high power are needed. Our low PIM design also offers excellent passive intermodulation performance.

Custom versions of most RF cable assemblies can be built and shipped same day. Custom cable assembly lengths can be obtained by specifying the desired length on the web site at time of order or by contacting a sales representative. Other available RF cable assembly value added services include connector orientation or clocking, heat shrink booting and custom labeling. RF testing can also be performed to document the electrical performance of your cable assembly.

Electrical Specifications

| Description | Minimum | Typical | Maximum | Units |
|-------------------------------|---------|--------------|---------|-----------------|
| Velocity of Propagation | | 88 | | % |
| RF Shielding | 120 | | | dB |
| Capacitance | | 23.2 [76.12] | | pF/ft [pF/m] |
| DC Resistance Inner Conductor | | 0.49 [1.61] | | Ω/1000ft [Ω/Km] |
| DC Resistance Outer Conductor | | 0.73 [2.4] | | Ω/1000ft [Ω/Km] |
| Jacket Spark | | | 2,000 | Vrms |

Mechanical Specifications

Cable Assembly

Weight 0.353 lbs [160.12 g]

Cable

Cable Type 1/2" Flexible
Impedance 50 Ohms

Click the following link (or enter part number in "SEARCH" on website) to obtain additional part information including price, inventory and certifications: [N Female to Straight Cut Lead Low PIM Cable Using 1/2 inch Flexible Coax PE3C6999](#)



N Female to Straight Cut Lead Low PIM Cable Using 1/2 inch Flexible Coax

RF Cable Assemblies Technical Data Sheet

PE3C6999

| | |
|--------------------------------------|--------------------------------|
| Inner Conductor Type | Solid |
| Inner Conductor Material and Plating | Copper Clad Aluminum |
| Dielectric Type | PE (F) |
| Number of Shields | 1 |
| Shield Layer 1 | Annular Corrugated Copper Tube |
| Jacket Material | PE, Black |
| Jacket Diameter | 0.629 in [15.98 mm] |
| One Time Minimum Bend Radius | 2.75 in [69.85 mm] |
| Repeated Minimum Bend Radius | 4.72 in [119.89 mm] |
| Typical Flex Cycles | 15 |
| Tensile Strength | 270 lbs [122.47 Kg] |

Connectors

| Description | Connector 1 | Connector 2 |
|---------------------------------------|-----------------------|-------------------|
| Type | N Female | Straight Cut Lead |
| Specification | IEC 60169-16 | |
| Impedance | 50 Ohms | 0 Ohms |
| Mating Cycles | 500 | |
| Contact Material and Plating | Spring Copper, Silver | |
| Contact Plating Specification | 5 µm minimum | |
| Dielectric Type | PTFE | |
| Outer Conductor Material and Plating | Brass, Nickel | |
| Outer Conductor Plating Specification | 5 µm minimum | |
| Body Material and Plating | Brass, Tri-Metal | |
| Body Plating Specification | 2 µm minimum | |

Compliance Certifications (see [product page](#) for current document)

Plotted and Other Data

Notes:

Click the following link (or enter part number in "SEARCH" on website) to obtain additional part information including price, inventory and certifications: [N Female to Straight Cut Lead Low PIM Cable Using 1/2 inch Flexible Coax PE3C6999](#)



N Female to Straight Cut Lead Low PIM Cable Using 1/2 inch Flexible Coax

RF Cable Assemblies Technical Data Sheet

PE3C6999

How to Order

Part Number Configuration:

PE3C6999

- **xx**

uu

Unit of Measure:
cm = Centimeters
<blank> = Inches
Length
Base Number

Example: PE3C6999-12 = 12 inches long cable
PE3C6999-100cm = 100 cm long cable

N Female to Straight Cut Lead Low PIM Cable Using 1/2 inch Flexible Coax from Pasternack Enterprises has same day shipment for domestic and International orders. Our RF, microwave and millimeter wave products maintain a 99.4% availability and are part of the broadest selection in the industry.

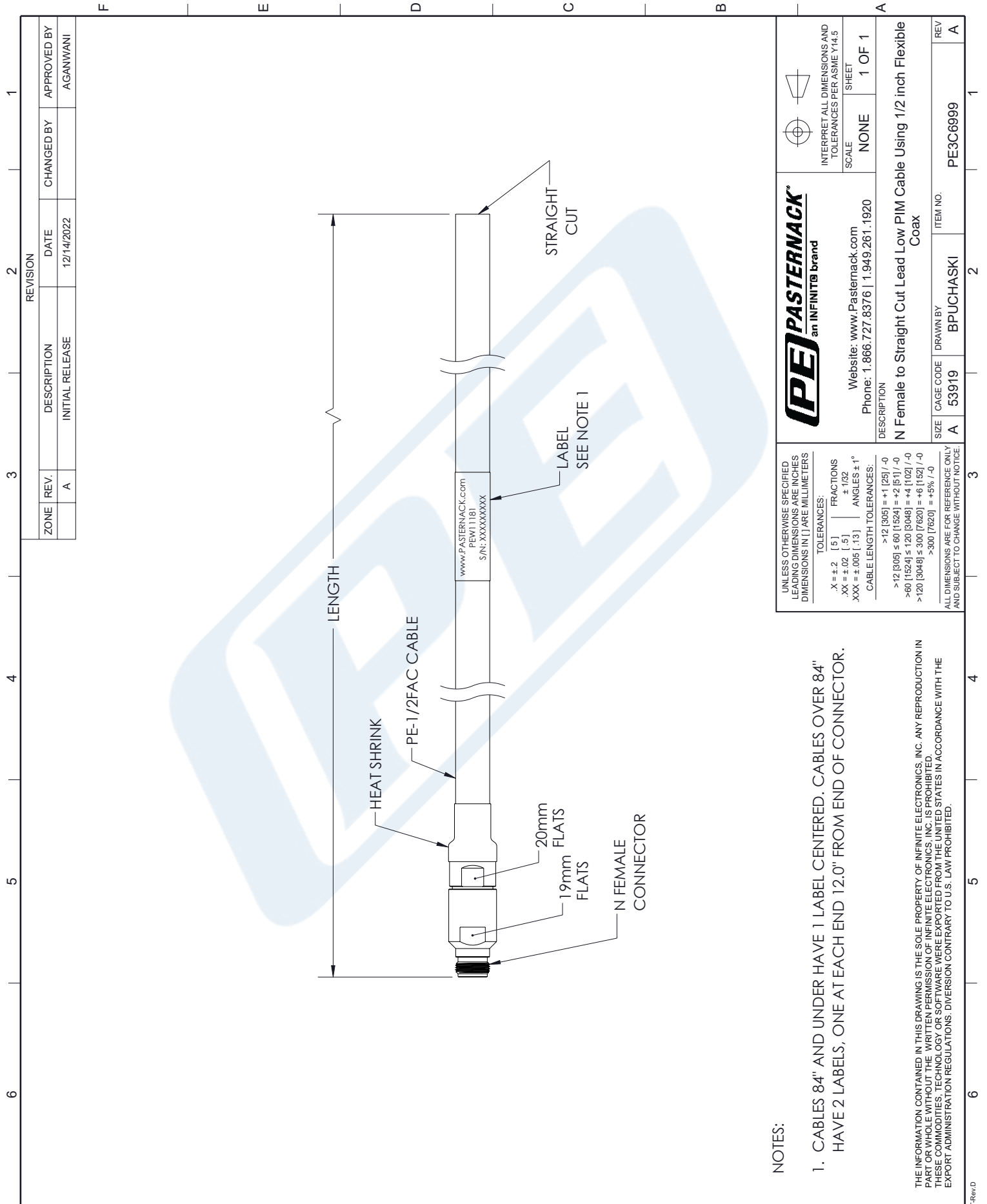
Click the following link (or enter part number in "SEARCH" on website) to obtain additional part information including price, inventory and certifications: [N Female to Straight Cut Lead Low PIM Cable Using 1/2 inch Flexible Coax PE3C6999](#)

URL: <https://www.pasternack.com/n-female-to-straight-cut-lead-low-pim-cable-using-1-2-inch-flexible-pe3c6999-p.aspx>

The information contained in this document is accurate to the best of our knowledge and representative of the part described herein. It may be necessary to make modifications to the part and/or the documentation of the part, in order to implement improvements. Pasternack reserves the right to make such changes as required. Unless otherwise stated, all specifications are nominal. Pasternack does not make any representation or warranty regarding the suitability of the part described herein for any particular purpose, and Pasternack does not assume any liability arising out of the use of any part or documentation.

PE3C6999 CAD Drawing

N Female to Straight Cut Lead Low PIM Cable Using 1/2 inch Flexible Coax



NOTES:

1. CABLES 84" AND UNDER HAVE 1 LABEL CENTERED. CABLES OVER 84" HAVE 2 LABELS, ONE AT EACH END 12.0" FROM END OF CONNECTOR.

THE INFORMATION CONTAINED IN THIS DRAWING IS THE SOLE PROPERTY OF INFINITE ELECTRONICS, INC. ANY REPRODUCTION IN PART OR WHOLE WITHOUT THE WRITTEN PERMISSION OF INFINITE ELECTRONICS, INC. IS PROHIBITED. THESE COMMODITIES, TECHNOLOGY OR SOFTWARE WERE EXPORTED FROM THE UNITED STATES IN ACCORDANCE WITH THE EXPORT ADMINISTRATION REGULATIONS. DIVERSION CONTRARY TO U.S. LAW PROHIBITED.

| | | | |
|--|---|-----------------------|--|
| UNLESS OTHERWISE SPECIFIED LEADING DIMENSIONS ARE INCHES DIMENSIONS IN [] ARE MILLIMETERS TOLERANCES: X = ±.2 [.5] FRACTIONS .XX = ±.02 [.5] ± 1/32 XXX = ±.005 [.13] ANGLES ± 1° CABLE LENGTH TOLERANCES: >12 [305] = +1 [25] / -0 >12 [305] ≤ 60 [1524] = +2 [91] / -0 >60 [1524] ≤ 120 [3048] = +4 [102] / -0 >120 [3048] ≤ 300 [7620] = +6 [152] / -0 >300 [7620] = +5% / -0 ALL DIMENSIONS ARE FOR REFERENCE ONLY AND SUBJECT TO CHANGE WITHOUT NOTICE. | PE PASTERNAK an INFINITE brand Website: www.Pasternack.com Phone: 1.866.727.8376 1.949.261.1920 | | INTERPRET ALL DIMENSIONS AND TOLERANCES PER ASME Y14.5 SCALE: NONE SHEET: 1 OF 1 |
| | DESCRIPTION N Female to Straight Cut Lead Low PIM Cable Using 1/2 inch Flexible Coax | | REV A |
| SIZE A | CAGE CODE 53919 | DRAWN BY BPUCHASKI | ITEM NO. PE3C6999 |