



## SMA Female 2 Hole Flange to SMP Female Cable Using RG405 Coax

### RF Cable Assemblies Technical Data Sheet

**PE3C7546**

#### Configuration

- Connector 1: SMA Female 2 Hole Flange
- Connector 2: SMP Female
- Cable Type: RG405

#### Features

- Max Frequency 18 GHz
- Shielding Effectivity > -110 dB
- 69.5% Phase Velocity

#### Applications

- General Purpose
- Laboratory Use

#### Description

Pasternack's PE3C7546 SMA female 2 hole flange to SMP female cable using RG405 coax is part of our full line of RF components available for same-day shipping. Pasternack's semi-rigid RF cable assemblies are ideal for high performance applications and can be formed, using proper tooling, to the routing pattern required. This Pasternack SMA to SMP cable assembly has a female to female gender configuration with 50 ohm semi-rigid RG405 coax. The PE3C7546 SMA female to SMP female cable assembly operates to 18 GHz. Our RF cable assembly with SMA 2 hole flange interface allows designers to create external connections on their product enclosures, and can be used in a variety of other rack mount and panel mount applications.

Custom versions of most RF cable assemblies can be built and shipped same day. Custom cable assembly lengths can be obtained by specifying the desired length on the web site at time of order or by contacting a sales representative. Other available RF cable assembly value added services include connector orientation or clocking, heat shrink booting and custom labeling. RF testing can also be performed to document the electrical performance of your cable assembly.

Click the following link (or enter part number in "SEARCH" on website) to obtain additional part information including price, inventory and certifications: [SMA Female 2 Hole Flange to SMP Female Cable Using RG405 Coax PE3C7546](#)



SMA Female 2 Hole Flange to SMP Female  
Cable Using RG405 Coax

**RF Cable Assemblies Technical Data Sheet**

**PE3C7546**

**Electrical Specifications**

Description	Minimum	Typical	Maximum	Units
Frequency Range	DC		18	GHz
VSWR			1.4:1	
Velocity of Propagation		69.5		%
RF Shielding	-110			dB
Capacitance		29.4 [96.46]		pF/ft [pF/m]

**Specifications by Frequency**

Description	F1	F2	F3	F4	F5	Units
Frequency	1	2	4.5	9	18	GHz
Insertion Loss (Typ.)	0.22	0.284	0.445	0.735	1.12	dB/ft
	0.72	0.93	1.46	2.41	3.67	dB/m

**Electrical Specification Notes:**

Insertion Loss does not include the loss of the connectors. Insertion Loss is estimated as 0.1 dB per connector.

**Mechanical Specifications**

**Cable Assembly**

Weight 0.025 lbs [11.34 g]

**Cable**

Cable Type RG405  
 Impedance 50 Ohms  
 Inner Conductor Type Solid  
 Inner Conductor Material and Plating Copper Clad Steel, Silver  
 Dielectric Type PTFE  
 Number of Shields 1  
 Outer Conductor Material and Plating Copper

Repeated Minimum Bend Radius 0.05 in [1.27 mm]

Click the following link (or enter part number in "SEARCH" on website) to obtain additional part information including price, inventory and certifications: [SMA Female 2 Hole Flange to SMP Female Cable Using RG405 Coax PE3C7546](#)



SMA Female 2 Hole Flange to SMP Female  
Cable Using RG405 Coax

**RF Cable Assemblies Technical Data Sheet**

**PE3C7546**

**Connectors**

Description	Connector 1	Connector 2
Type	SMA Female 2 Hole Flange	SMP Female
Specification	MIL-STD-348	MIL-STD-348
Impedance	50 Ohms	50 Ohms
Contact Material and Plating	Beryllium Copper, Gold	Beryllium Copper, Gold
Contact Plating Specification	MIL-G-45204	MIL-G-45204
Dielectric Type	PTFE	PTFE
Body Material and Plating	Stainless Steel, Gold	Beryllium Copper, Gold
Body Plating Specification	MIL-G-45204	MIL-G-45204

**Environmental Specifications**

**Temperature**

Operating Range

-55 to +125 deg C

**Compliance Certifications** (see [product page](#) for current document)

**Plotted and Other Data**

Notes:

Click the following link (or enter part number in "SEARCH" on website) to obtain additional part information including price, inventory and certifications: [SMA Female 2 Hole Flange to SMP Female Cable Using RG405 Coax PE3C7546](#)



## SMA Female 2 Hole Flange to SMP Female Cable Using RG405 Coax

### RF Cable Assemblies Technical Data Sheet

**PE3C7546**

#### How to Order

Part Number Configuration:

**PE3C7546**

- **xx**

**uu**

Unit of Measure:  
cm = Centimeters  
<blank> = Inches  
Length  
Base Number

Example: PE3C7546-12 = 12 inches long cable  
PE3C7546-100cm = 100 cm long cable

SMA Female 2 Hole Flange to SMP Female Cable Using RG405 Coax from Pasternack Enterprises has same day shipment for domestic and International orders. Our RF, microwave and millimeter wave products maintain a 99.4% availability and are part of the broadest selection in the industry.

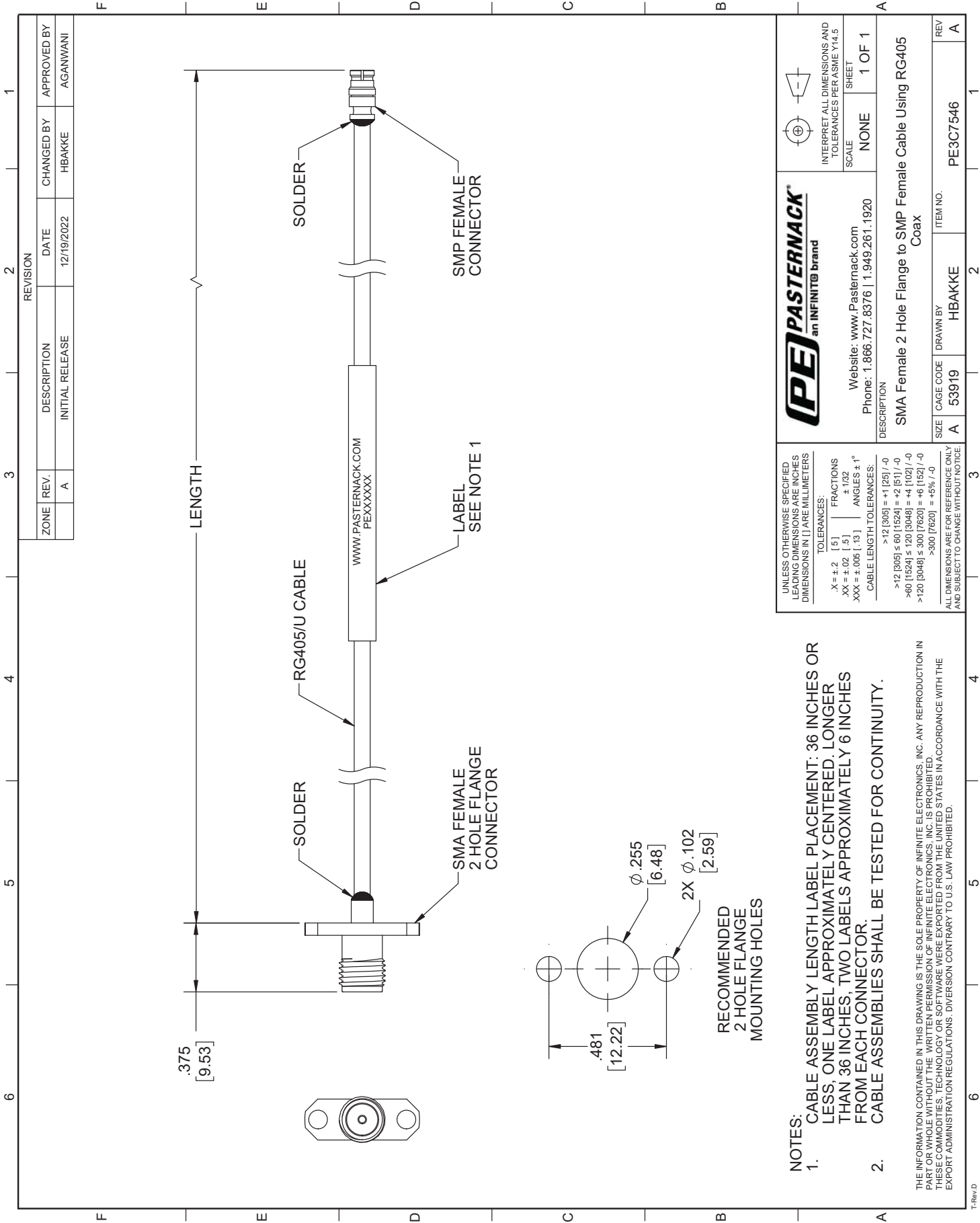
Click the following link (or enter part number in "SEARCH" on website) to obtain additional part information including price, inventory and certifications: [SMA Female 2 Hole Flange to SMP Female Cable Using RG405 Coax PE3C7546](#)

URL: <https://www.pasternack.com/sma-female-2-hole-flange-to-smp-female-cable-using-rg405-pe3c7546-p.aspx>

The information contained in this document is accurate to the best of our knowledge and representative of the part described herein. It may be necessary to make modifications to the part and/or the documentation of the part, in order to implement improvements. Pasternack reserves the right to make such changes as required. Unless otherwise stated, all specifications are nominal. Pasternack does not make any representation or warranty regarding the suitability of the part described herein for any particular purpose, and Pasternack does not assume any liability arising out of the use of any part or documentation.

# PE3C7546 CAD Drawing

SMA Female 2 Hole Flange to SMP Female Cable Using RG405 Coax



ZONE	REV.	DESCRIPTION	DATE	CHANGED BY	APPROVED BY
	A	INITIAL RELEASE	12/19/2022	HBAKKE	AGANWANI

		Website: <a href="http://www.Pastermack.com">www.Pastermack.com</a> Phone: 1.866.727.8376   1.949.261.1920
INTERPRET ALL DIMENSIONS AND TOLERANCES PER ASME Y14.5		SCALE: NONE SHEET: 1 OF 1
DESCRIPTION: <b>SMA Female 2 Hole Flange to SMP Female Cable Using RG405 Coax</b>		
SIZE: A	CAGE CODE: 53919	DRAWN BY: HBAKKE ITEM NO.: PE3C7546
REV: A		REV: A

UNLESS OTHERWISE SPECIFIED LEADING DIMENSIONS ARE INCHES DIMENSIONS IN [ ] ARE MILLIMETERS

TOLERANCES:  
 X = +.2 [5] FRACTIONS  
 XX = +.02 [ .5 ]  
 XXX = +.005 [ .13 ]

ANGLES ± 1°

CABLE LENGTH TOLERANCES:  
 >12 [305] = +1 [25] / -0  
 >60 [1524] ≤ 60 [1524] = +2 [51] / -0  
 >120 [3048] ≤ 120 [3048] = +4 [102] / -0  
 >300 [7620] ≤ 300 [7620] = +6 [152] / -0  
 >300 [7620] = +5% / -0

ALL DIMENSIONS ARE FOR REFERENCE ONLY AND SUBJECT TO CHANGE WITHOUT NOTICE.

- NOTES:
- CABLE ASSEMBLY LENGTH LABEL PLACEMENT: 36 INCHES OR LESS; ONE LABEL APPROXIMATELY CENTERED; LONGER THAN 36 INCHES, TWO LABELS APPROXIMATELY 6 INCHES FROM EACH CONNECTOR.
  - CABLE ASSEMBLIES SHALL BE TESTED FOR CONTINUITY.
- THE INFORMATION CONTAINED IN THIS DRAWING IS THE SOLE PROPERTY OF INFINITE ELECTRONICS, INC.. ANY REPRODUCTION IN PART OR WHOLE WITHOUT THE WRITTEN PERMISSION OF INFINITE ELECTRONICS, INC. IS PROHIBITED. THESE COMMODITIES, TECHNOLOGY OR SOFTWARE WERE EXPORTED FROM THE UNITED STATES IN ACCORDANCE WITH THE EXPORT ADMINISTRATION REGULATIONS. DIVERSION CONTRARY TO U.S. LAW PROHIBITED.