

QMA Male to QMA Male Low PIM Cable 24 Inch Length Using TFT-5G-402 Coax Using Times Microwave Components



PE3C8005-24

Configuration

- Connector 1: QMA Male
- Connector 2: QMA Male
- Cable Type: TFT-5G-402
- Coax Flex Type: Flexible

Features

- Max Frequency 3 GHz
- Low PIM: -160 dBc Max
- Shielding Effectivity > 80 dB
- 76% Phase Velocity
- Double Shielded
- FEP Jacket
- 100 Mating Cycles



Applications

- General Purpose
- Laboratory Use
- Low PIM Applications
- Indoor and Outdoor Use
- Plenum Rated Applications

Description

Pasternack's PE3C8005-24 QMA male to QMA male 24 inch cable using TFT-5G-402 coax is part of our full line of RF components available for same-day shipping. Pasternack's flexible RF cable assemblies are ideal for applications where tight bends and flexure are required. This Pasternack QMA to QMA cable assembly has a male to male gender configuration with 50 ohm flexible TFT-5G-402 coax. The PE3C8005-24 QMA male to QMA male cable assembly operates to 3 GHz. Our low PIM design also offers excellent passive intermodulation performance with PIM levels better than -160 dBc. The double shielding of this Pasternack cable assembly provides excellent shielding effectiveness of better than 80 dB.

Custom versions of most RF cable assemblies can be built and shipped same day. Custom cable assembly lengths can be obtained by specifying the desired length on the web site at time of order or by contacting a sales representative. Other available RF cable assembly value added services include connector orientation or clocking, heat shrink booting and custom labeling. RF testing can also be performed to document the electrical performance of your cable assembly.

Electrical Specifications

| Description | Minimum | Typical | Maximum | Units |
|--|---------|---------|---------|-------|
| Frequency Range | DC | | 3 | GHz |
| VSWR | | | 1.4:1 | |
| Velocity of Propagation | | 76 | | % |
| RF Shielding | 80 | | | dB |
| Passive Intermodulation | | | -160 | dBc |
| IM3 (2x43dBm Tones) at 850 MHz or 1900 MHz | | | | |

QMA Male to QMA Male Low PIM Cable 24 Inch Length Using TFT-5G-402 Coax Using Times Microwave Components



PE3C8005-24

Electrical Specifications

| Description | Minimum | Typical | Maximum | Units |
|-------------|---------|-------------|---------|--------------|
| Capacitance | | 26.7 [87.6] | | pF/ft [pF/m] |

Specifications by Frequency

| Description | F1 | F2 | F3 | F4 | F5 | Units |
|-----------------------|------|------|------|------|-----|-------|
| Frequency | 0.1 | 0.25 | 0.5 | 1 | 3 | GHz |
| Insertion Loss (Typ.) | 0.24 | 0.28 | 0.36 | 0.42 | 0.6 | dB |

Electrical Specification Notes:

The Insertion Loss data above is based on the performance specifications of the coax and connectors used in this assembly. The Insertion Loss includes an estimated insertion loss of 0.1 dB per connector.

Mechanical Specifications

Cable Assembly

Width/Diameter 0.413 in [10.49 mm]

Cable

Cable Type TFT-5G-402
 Impedance 50 Ohms
 Inner Conductor Type Solid
 Inner Conductor Material and Plating Copper
 Dielectric Type PTFE
 Number of Shields 2
 Jacket Material FEP, Blue
 Jacket Diameter 0.16 in [4.06 mm]
 One Time Minimum Bend Radius 0.75 in [19.05 mm]

Connectors

| Description | Connector 1 | Connector 2 |
|-------------------------------|---------------|---------------|
| Type | QMA Male | QMA Male |
| Impedance | 50 Ohms | 50 Ohms |
| Configuration | Straight | Straight |
| Mating Cycles | 100 | 100 |
| Contact Material and Plating | Brass, Silver | Brass, Silver |
| Contact Plating Specification | 5 µm | 5 µm |
| Dielectric Type | PTFE | PTFE |
| Body Material and Plating | Brass, Silver | Brass, Silver |
| Body Plating Specification | 5 µm | 5 µm |

QMA Male to QMA Male Low PIM Cable 24 Inch Length Using TFT-5G-402 Coax Using Times Microwave Components



PE3C8005-24

Environmental Specifications

Operating Range Temperature -40 to +85 deg C

Compliance Certifications (see [product page](#) for current document)

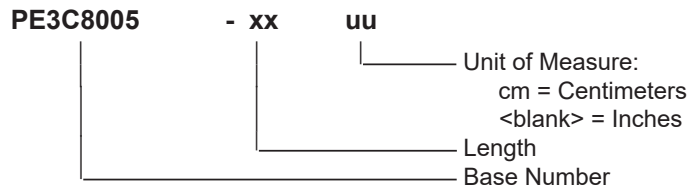
Plotted and Other Data

Notes:

Typical Performance Data

How to Order

Part Number Configuration:



Example: PE3C8005-12 = 12 inches long cable
PE3C8005-100cm = 100 cm long cable

QMA Male to QMA Male Low PIM Cable 24 Inch Length Using TFT-5G-402 Coax Using Times Microwave Components from Pasternack Enterprises has same day shipment for domestic and International orders. Our RF, microwave and millimeter wave products maintain a 99.4% availability and are part of the broadest selection in the industry.

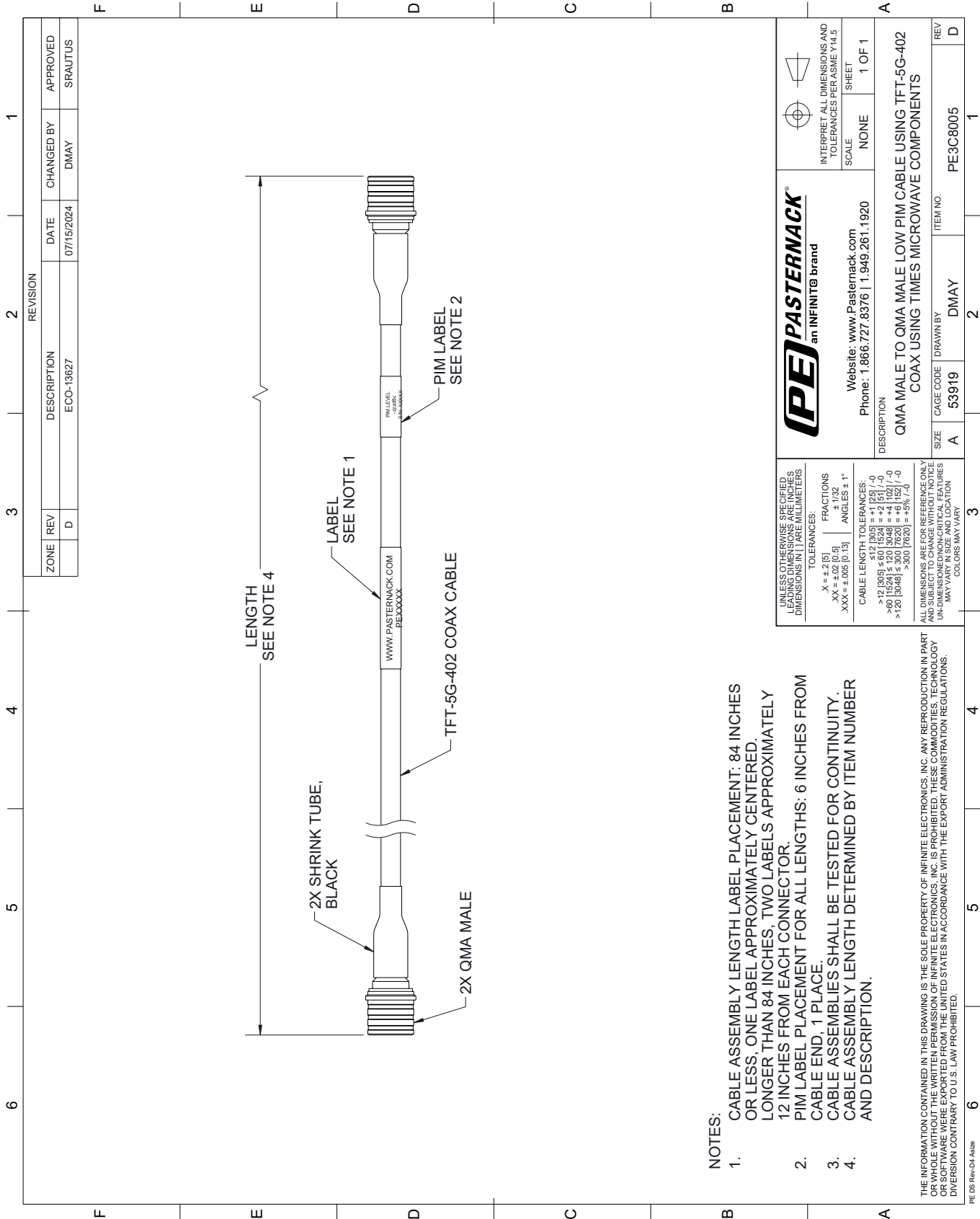
Click the following link (or enter part number in "SEARCH" on website) to obtain additional part information including price, inventory and certifications: [QMA Male to QMA Male Low PIM Cable 24 Inch Length Using TFT-5G-402 Coax Using Times Microwave Components PE3C8005-24](#)


URL: <https://www.pasternack.com/qma-male-to-qma-male-low-pim-cable-24-inch-length-using-tft-5g-402-pe3c8005-24-p.aspx>

The information contained within this document is accurate to the best of our knowledge and representative of the part described herein. It may be necessary to make modifications to the part and/or the documentation of the part in order to implement improvements. Pasternack Enterprises reserves the right to make such changes as required. Unless otherwise stated, all specifications are nominal. Pasternack Enterprises does not make any representation or warranty regarding the suitability of the part described herein for any particular purpose, and Pasternack Enterprises does not assume liability arising out of the use of any part or document.

PE3C8005-24 CAD Drawing

QMA Male to QMA Male Low PIM Cable 24 Inch Length Using TFT-5G-402 Coax Using Times Microwave Components



| | | |
|---|-----------|--|
|  | | INTERPRET ALL DIMENSIONS AND TOLERANCES PER ASME Y14.5 SCALE: NONE SHEET: 1 OF 1 |
| Website: www.Pasternack.com Phone: 1.866.727.8376 1.949.261.1920 | | |
| DESCRIPTION: QMA MALE TO QMA MALE LOW PIM CABLE USING TFT-5G-402 COAX USING TIMES MICROWAVE COMPONENTS | | |
| SIZE | CAGE CODE | ITEM NO. |
| A | 53919 | DMAY |
| DRAWN BY | | PE3C8005 |
| REV | | D |

UNLESS OTHERWISE SPECIFIED, ALL DIMENSIONS ARE IN INCHES. DIMENSIONS IN PARENTHESES ARE IN MILLIMETERS.

TOLERANCES:
 X = ±.2(5) FRACTIONS ± 1/32
 .XX = ±.02 (0.5) ANGLES ± 1°
 .XXX = ±.005 (0.13)

CABLE LENGTH TOLERANCES:
 >12 [305] ≤ 60 [1524] = ±.5(1) / -0
 >60 [1524] ≤ 120 [3048] = ±.5(1) / -0
 >120 [3048] ≤ 300 [7620] = ±.5(1) / -0
 >300 [7620] = ±.5(1) / -0

ALL DIMENSIONS ARE FOR REFERENCE ONLY. DIMENSIONS OF INDIVIDUAL COMPONENTS MAY VARY IN SIZE AND LOCATION. COLORS MAY VARY.

THE INFORMATION CONTAINED IN THIS DRAWING IS THE SOLE PROPERTY OF INFINITE ELECTRONICS, INC. ANY REPRODUCTION IN PART OR WHOLE WITHOUT THE WRITTEN PERMISSION OF INFINITE ELECTRONICS, INC. IS PROHIBITED. THESE COMMODITIES, TECHNOLOGY OR SOFTWARE WERE EXPORTED FROM THE UNITED STATES IN ACCORDANCE WITH THE EXPORT ADMINISTRATION REGULATIONS. DIVERSION CONTRARY TO U.S. LAW PROHIBITED.

PE DS Rev-D4 As2b