

4.1/9.5 Mini DIN Female to 7/16 DIN Male  
Low PIM Cable 150 CM Length Using TFT-5G-402 Coax  
Using Times Microwave Components



**PE3C8283-150CM**

**Configuration**

- Connector 1: 4.1/9.5 Mini DIN Female
- Connector 2: 7/16 DIN Male
- Cable Type: TFT-5G-402
- Coax Flex Type: Flexible

**Features**

- Max Frequency 5.8 GHz
- Low PIM: -160 dBc Max
- Shielding Effectivity > 80 dB
- 76% Phase Velocity
- Double Shielded
- FEP Jacket



**Applications**

- General Purpose
- Laboratory Use
- Low PIM Applications
- Indoor and Outdoor Use
- Plenum Rated Applications

**Description**

Pasternack's PE3C8283-150CM 4.1/9.5 Mini DIN female to 7/16 DIN male 150 cm cable using TFT-5G-402 coax is part of our full line of RF components available for same-day shipping. Pasternack's flexible RF cable assemblies are ideal for applications where tight bends and flexure are required. This Pasternack 4.1/9.5 Mini DIN to 7/16 DIN cable assembly has a female to male gender configuration with 50 ohm flexible TFT-5G-402 coax. The PE3C8283-150CM 4.1/9.5 Mini DIN female to 7/16 DIN male cable assembly operates to 5.8 GHz. Our low PIM design also offers excellent passive intermodulation performance with PIM levels better than -160 dBc. The double shielding of this Pasternack cable assembly provides excellent shielding effectiveness of better than 80 dB.

Custom versions of most RF cable assemblies can be built and shipped same day. Custom cable assembly lengths can be obtained by specifying the desired length on the web site at time of order or by contacting a sales representative. Other available RF cable assembly value added services include connector orientation or clocking, heat shrink booting and custom labeling. RF testing can also be performed to document the electrical performance of your cable assembly.

**Electrical Specifications**

Description	Minimum	Typical	Maximum	Units
Frequency Range	DC		5.8	GHz
VSWR			1.4:1	
Velocity of Propagation		76		%
RF Shielding	80			dB
Passive Intermodulation			-160	dBc
IM3 (2x43dBm Tones) at 850 MHz or 1900 MHz				

4.1/9.5 Mini DIN Female to 7/16 DIN Male  
Low PIM Cable 150 CM Length Using TFT-5G-402 Coax  
Using Times Microwave Components



**PE3C8283-150CM**

**Electrical Specifications**

Description	Minimum	Typical	Maximum	Units
Capacitance		26.7 [87.6]		pF/ft [pF/m]

**Specifications by Frequency**

Description	F1	F2	F3	F4	F5	Units
Frequency	0.25	0.5	1	2.5	5.8	GHz
Insertion Loss (Typ.)	0.44	0.58	0.78	1.2	1.8	dB

Electrical Specification Notes:

The Insertion Loss data above is based on the performance specifications of the coax and connectors used in this assembly. The Insertion Loss includes an estimated insertion loss of 0.1\*SQRT(FGHz) dB for the female connector and 0.1 dB for the male connector.

**Mechanical Specifications**

**Cable Assembly**

Width/Diameter 1.25 in [31.75 mm]

**Cable**

Cable Type TFT-5G-402  
 Impedance 50 Ohms  
 Inner Conductor Type Solid  
 Inner Conductor Material and Plating Copper  
 Dielectric Type PTFE  
 Number of Shields 2  
 Jacket Material FEP, Blue  
 Jacket Diameter 0.16 in [4.06 mm]  
 One Time Minimum Bend Radius 0.75 in [19.05 mm]

4.1/9.5 Mini DIN Female to 7/16 DIN Male  
Low PIM Cable 150 CM Length Using TFT-5G-402 Coax  
Using Times Microwave Components



## PE3C8283-150CM

### Connectors

Description	Connector 1	Connector 2
Type	4.1/9.5 Mini DIN Female	7/16 DIN Male
Impedance	50 Ohms	50 Ohms
Configuration	Straight	Straight
Mating Cycles	500	
Contact Material and Plating	Phosphor Bronze, Silver	Brass, Silver
Contact Plating Specification	200 µin	5 µm
Dielectric Type	PTFE	PTFE
Outer Conductor Material and Plating	Brass, Tri-Metal	
Outer Conductor Plating Specification	80 µin	
Body Material and Plating	Brass, Tri-Metal	Brass, Tri-Metal
Body Plating Specification	80 µin	3 µm
Coupling Nut Material and Plating		Brass, Tri-Metal
Coupling Nut Plating Specification		3 µm
Torque		22.083 ft-lbs 29.95 Nm

### Environmental Specifications

Operating Range Temperature -55 to +85 deg C

**Compliance Certifications** (see [product page](#) for current document)

### Plotted and Other Data

Notes:

4.1/9.5 Mini DIN Female to 7/16 DIN Male  
Low PIM Cable 150 CM Length Using TFT-5G-402 Coax  
Using Times Microwave Components

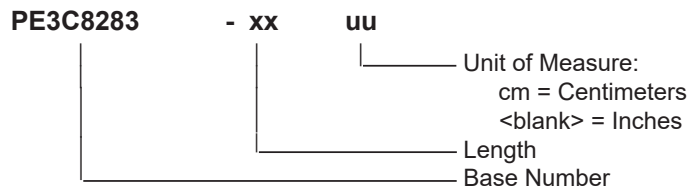


**PE3C8283-150CM**

**Typical Performance Data**

**How to Order**

Part Number Configuration:



Example: PE3C8283-12 = 12 inches long cable  
PE3C8283-100cm = 100 cm long cable

4.1/9.5 Mini DIN Female to 7/16 DIN Male Low PIM Cable 150 CM Length Using TFT-5G-402 Coax Using Times Microwave Components from Pasternack Enterprises has same day shipment for domestic and International orders. Our RF, microwave and millimeter wave products maintain a 99.4% availability and are part of the broadest selection in the industry.

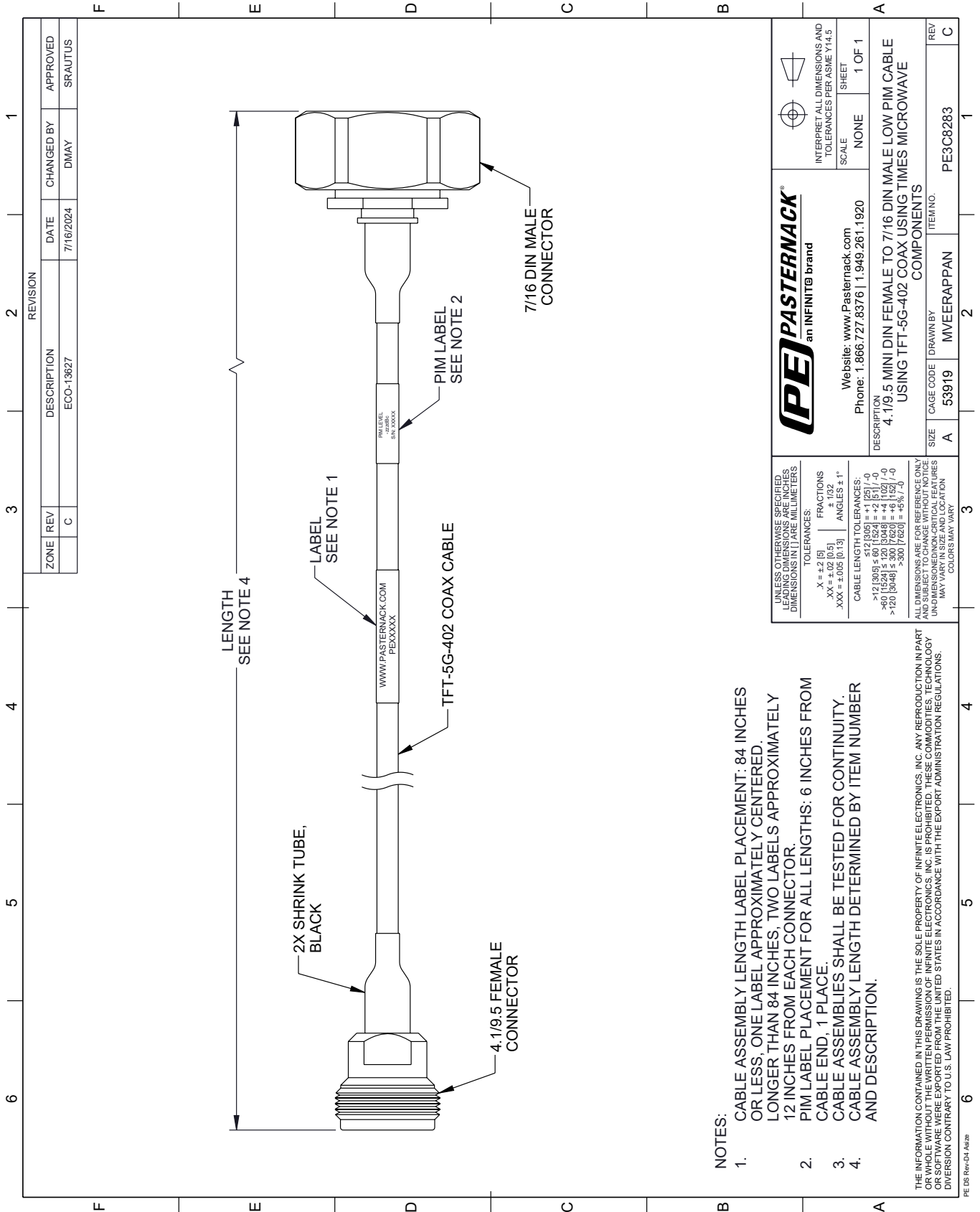
Click the following link (or enter part number in "SEARCH" on website) to obtain additional part information including price, inventory and certifications: [4.1/9.5 Mini DIN Female to 7/16 DIN Male Low PIM Cable 150 CM Length Using TFT-5G-402 Coax Using Times Microwave Components PE3C8283-150CM](#)

URL: <https://www.pasternack.com/4.1-9.5-mini-din-female-to-7-16-din-male-low-pim-cable-150-cm-length-using-tft-5g-402-pe3c8283-150cm-p.aspx>

The information contained within this document is accurate to the best of our knowledge and representative of the part described herein. It may be necessary to make modifications to the part and/or the documentation of the part in order to impliment improvements. Pasternack Enterprises reserves the right to make such changes as required. Unless otherwise stated, all specifications are nominal. Pasternack Enterprises does not make any representation or warranty regarding the suitability of the part described herein for any particular purpose, and Pasternack Enterprises does not assume liability arising out of the use of any part or document.

# PE3C8283-150CM CAD Drawing

4.1/9.5 Mini DIN Female to 7/16 DIN Male Low PIM Cable 150 CM Length  
Using TFT-5G-402 Coax Using Times Microwave Components



**NOTES:**

1. CABLE ASSEMBLY LENGTH LABEL PLACEMENT: 84 INCHES OR LESS; ONE LABEL APPROXIMATELY CENTERED. LONGER THAN 84 INCHES, TWO LABELS APPROXIMATELY 12 INCHES FROM EACH CONNECTOR.
2. PIM LABEL PLACEMENT FOR ALL LENGTHS: 6 INCHES FROM CABLE END, 1 PLACE.
3. CABLE ASSEMBLIES SHALL BE TESTED FOR CONTINUITY.
4. CABLE ASSEMBLY LENGTH DETERMINED BY ITEM NUMBER AND DESCRIPTION.

THE INFORMATION CONTAINED IN THIS DRAWING IS THE SOLE PROPERTY OF INFINITE ELECTRONICS, INC. ANY REPRODUCTION IN PART OR WHOLE WITHOUT THE WRITTEN PERMISSION OF INFINITE ELECTRONICS, INC. IS PROHIBITED. THESE COMMODITIES, TECHNOLOGY OR SOFTWARE ARE EXPORTED FROM THE UNITED STATES IN ACCORDANCE WITH THE EXPORT ADMINISTRATION REGULATIONS. DIVERSION CONTRARY TO U.S. LAW PROHIBITED.

PE DS Rev-D4 Add2

UNLESS OTHERWISE SPECIFIED, LEADING DIMENSIONS ARE IN INCHES. DIMENSIONS IN [ ] ARE MILLIMETERS.		<b>PE PASTERNAK</b> an INFINITI® brand		INTERPRET ALL DIMENSIONS AND TOLERANCES PER ASME Y14.5	
TOLERANCES:		Website: <a href="http://www.Pasternack.com">www.Pasternack.com</a>		SCALE: NONE	
.X = ±.2 [5]		Phone: 1.866.727.8376   1.949.261.1920		SHEET 1 OF 1	
.XX = ±.02 [0.5]		www.Pasternack.com		NONE	
.XXX = ±.005 [0.13]		Phone: 1.866.727.8376   1.949.261.1920		SHEET 1 OF 1	
ANGLES ± 1°		DESCRIPTION		REV	
CABLE LENGTH TOLERANCES:		4.1/9.5 MINI DIN FEMALE TO 7/16 DIN MALE LOW PIM CABLE		C	
>12 [305] ≤ 60 [1524] = ±.1 [25] / -0		USING TFT-5G-402 COAX USING TIMES MICROWAVE		REV	
>60 [1524] ≤ 120 [3048] = ±.4 [102] / -0		COMPONENTS		C	
>120 [3048] ≤ 300 [7620] = ±.6 [15] / -0		DRAWN BY		REV	
ALL DIMENSIONS ARE FOR REFERENCE ONLY. UNLESS OTHERWISE SPECIFIED, DIMENSIONS ARE IN INCHES. DIMENSIONS IN [ ] ARE MILLIMETERS.		MVEERAPPAN		C	
MAY VARY IN SIZE AND LOCATION. COLORS MAY VARY.		ITEM NO.		REV	
		53919		PE3C8283	
		CAGE CODE		1	
		DRAWN BY		2	
		MVEERAPPAN		3	
		ITEM NO.		4	
		53919		5	
		CAGE CODE		6	
		MVEERAPPAN		6	
		ITEM NO.		6	
		53919		6	
		CAGE CODE		6	
		DRAWN BY		6	
		MVEERAPPAN		6	
		ITEM NO.		6	
		53919		6	
		CAGE CODE		6	
		DRAWN BY		6	
		MVEERAPPAN		6	
		ITEM NO.		6	
		53919		6	
		CAGE CODE		6	
		DRAWN BY		6	
		MVEERAPPAN		6	
		ITEM NO.		6	
		53919		6	
		CAGE CODE		6	
		DRAWN BY		6	
		MVEERAPPAN		6	
		ITEM NO.		6	
		53919		6	
		CAGE CODE		6	
		DRAWN BY		6	
		MVEERAPPAN		6	
		ITEM NO.		6	
		53919		6	
		CAGE CODE		6	
		DRAWN BY		6	
		MVEERAPPAN		6	
		ITEM NO.		6	
		53919		6	
		CAGE CODE		6	
		DRAWN BY		6	
		MVEERAPPAN		6	
		ITEM NO.		6	
		53919		6	
		CAGE CODE		6	
		DRAWN BY		6	
		MVEERAPPAN		6	
		ITEM NO.		6	
		53919		6	
		CAGE CODE		6	
		DRAWN BY		6	
		MVEERAPPAN		6	
		ITEM NO.		6	
		53919		6	
		CAGE CODE		6	
		DRAWN BY		6	
		MVEERAPPAN		6	
		ITEM NO.		6	
		53919		6	
		CAGE CODE		6	
		DRAWN BY		6	
		MVEERAPPAN		6	
		ITEM NO.		6	
		53919		6	
		CAGE CODE		6	
		DRAWN BY		6	
		MVEERAPPAN		6	
		ITEM NO.		6	
		53919		6	
		CAGE CODE		6	
		DRAWN BY		6	
		MVEERAPPAN		6	
		ITEM NO.		6	
		53919		6	
		CAGE CODE		6	
		DRAWN BY		6	
		MVEERAPPAN		6	
		ITEM NO.		6	
		53919		6	
		CAGE CODE		6	
		DRAWN BY		6	
		MVEERAPPAN		6	
		ITEM NO.		6	
		53919		6	
		CAGE CODE		6	
		DRAWN BY		6	
		MVEERAPPAN		6	
		ITEM NO.		6	
		53919		6	
		CAGE CODE		6	
		DRAWN BY		6	
		MVEERAPPAN		6	
		ITEM NO.		6	
		53919		6	
		CAGE CODE		6	
		DRAWN BY		6	
		MVEERAPPAN		6	
		ITEM NO.		6	
		53919		6	
		CAGE CODE		6	
		DRAWN BY		6	
		MVEERAPPAN		6	
		ITEM NO.		6	
		53919		6	
		CAGE CODE		6	
		DRAWN BY		6	
		MVEERAPPAN		6	
		ITEM NO.		6	
		53919		6	
		CAGE CODE		6	
		DRAWN BY		6	
		MVEERAPPAN		6	
		ITEM NO.		6	
		53919		6	
		CAGE CODE		6	
		DRAWN BY		6	
		MVEERAPPAN		6	
		ITEM NO.		6	
		53919		6	
		CAGE CODE		6	
		DRAWN BY		6	
		MVEERAPPAN		6	
		ITEM NO.		6	
		53919		6	
		CAGE CODE		6	
		DRAWN BY		6	
		MVEERAPPAN		6	
		ITEM NO.		6	
		53919		6	
		CAGE CODE		6	
		DRAWN BY		6	
		MVEERAPPAN		6	
		ITEM NO.		6	
		53919		6	
		CAGE CODE		6	
		DRAWN BY		6	
		MVEERAPPAN		6	
		ITEM NO.		6	
		53919		6	
		CAGE CODE		6	
		DRAWN BY		6	
		MVEERAPPAN		6	
		ITEM NO.		6	
		53919		6	
		CAGE CODE		6	
		DRAWN BY		6	
		MVEERAPPAN		6	
		ITEM NO.		6	
		53919		6	
		CAGE CODE		6	
		DRAWN BY		6	
		MVEERAPPAN		6	
		ITEM NO.		6	
		53919		6	
		CAGE CODE		6	
		DRAWN BY		6	
		MVEERAPPAN		6	
		ITEM NO.		6	
		53919		6	
		CAGE CODE		6	
		DRAWN BY		6	
		MVEERAPPAN		6	
		ITEM NO.		6	
		53919		6	
		CAGE CODE		6	
		DRAWN BY		6	
		MVEERAPPAN		6	
		ITEM NO.		6	
		53919		6	
		CAGE CODE		6	
		DRAWN BY		6	
		MVEERAPPAN		6	
		ITEM NO.		6	
		53919		6	
		CAGE CODE		6	
		DRAWN BY		6	
		MVEERAPPAN		6	
		ITEM NO.		6	
		53919		6	
		CAGE CODE		6	
		DRAWN BY		6	
		MVEERAPPAN		6	
		ITEM NO.		6	
		53919		6	
		CAGE CODE		6	
		DRAWN BY		6	
		MVEERAPPAN		6	
		ITEM NO.		6	
		53919		6	
		CAGE CODE		6	
		DRAWN BY		6	
		MVEERAPPAN		6	
		ITEM NO.		6	
		53919		6	
		CAGE CODE		6	
		DRAWN BY		6	
		MVEERAPPAN		6	
		ITEM NO.		6	
		53919		6	
		CAGE CODE		6	
		DRAWN BY		6	
		MVEERAPPAN		6	
		ITEM NO.		6	
		53919		6	
		CAGE CODE		6	
		DRAWN BY		6	
		MVEERAPPAN		6	
		ITEM NO.		6	
		53919		6	
		CAGE CODE		6	
		DRAWN BY		6	
		MVEERAPPAN		6	
		ITEM NO.		6	
		53919		6	
		CAGE CODE		6	
		DRAWN BY		6	
		MVEERAPPAN		6	
		ITEM NO.		6	
		53919		6	
		CAGE CODE		6	
		DRAWN BY		6	
		MVEERAPPAN		6	
		ITEM NO.		6	
		53919		6	
		CAGE CODE		6	
		DRAWN BY		6	
		MVEERAPPAN		6	
		ITEM NO.		6	
		53919		6	
		CAGE CODE		6	
		DRAWN BY		6	
		MVEERAPPAN		6	
		ITEM NO.		6	
		53919		6	
		CAGE CODE		6	
		DRAWN BY		6	
		MVEERAPPAN		6	
		ITEM NO.		6	
		53919		6	
		CAGE CODE		6	
		DRAWN BY		6	
		MVEERAPPAN		6	
		ITEM NO.		6	
		53919		6	
		CAGE CODE		6	
		DRAWN BY		6	
		MVEERAPPAN		6	
		ITEM NO.		6	
		53919		6	
		CAGE CODE		6	
		DRAWN BY		6	
		MVEERAPPAN		6	
		ITEM NO.		6	
		53919		6	
		CAGE CODE		6	
		DRAWN BY		6	
		MVEERAPPAN		6	
		ITEM NO.		6	
		53919		6	
		CAGE CODE		6	
		DRAWN BY		6	
		MVEERAPPAN		6	
		ITEM NO.		6	
		53919		6	
		CAGE CODE		6	
		DRAWN BY		6	
		MVEERAPPAN		6	
		ITEM NO.		6	
		53919		6	
		CAGE CODE		6	
		DRAWN BY		6	
		MVEERAPPAN		6	
		ITEM NO.		6	
		53919		6	
		CAGE CODE		6	
		DRAWN BY		6	
		MVEERAPPAN		6	
		ITEM NO.		6	
		53919		6	
		CAGE CODE		6	
		DRAWN BY		6	
		MVEERAPPAN		6	
		ITEM NO.		6	
		53919		6	
		CAGE CODE		6	
		DRAWN BY		6	