



## N Male to N Female Bulkhead Cable Using PE-SR405FL Coax , LF Solder

### RF Cable Assemblies Technical Data Sheet

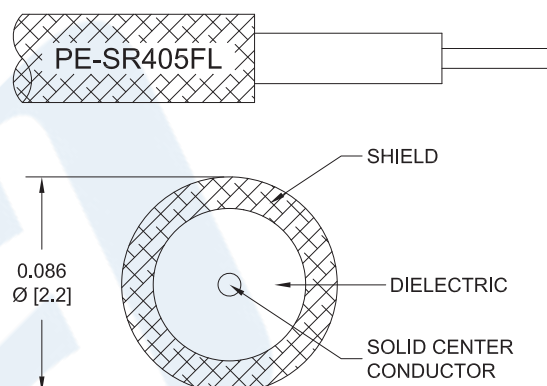
**PE3C8368LF**

#### Configuration

- Connector 1: N Male
- Connector 2: N Female Bulkhead
- Cable Type: PE-SR405FL

#### Features

- Max Frequency 3 GHz
- 69.5% Phase Velocity



#### Applications

- General Purpose
- Laboratory Use

#### Description

Pasternack's PE3C8368LF type N male to type N female bulkhead cable using PE-SR405FL coax is part of our full line of RF components available for same-day shipping. Pasternack's formable RF cable assemblies provide an alternative to costly pre-formed semi-rigid assemblies since they are hand formable. This Pasternack type N to type N cable assembly has a male to female gender configuration with 50 ohm formable PE-SR405FL coax. The PE3C8368LF type N male to type N female cable assembly operates to 3 GHz. Our RF cable assembly with type N bulkhead interface allows designers to create external connections on their product enclosures, and can be used in a variety of other rack mount and panel mount applications.

Custom versions of most RF cable assemblies can be built and shipped same day. Custom cable assembly lengths can be obtained by specifying the desired length on the web site at time of order or by contacting a sales representative. Other available RF cable assembly value added services include connector orientation or clocking, heat shrink booting and custom labeling. RF testing can also be performed to document the electrical performance of your cable assembly.

Click the following link (or enter part number in "SEARCH" on website) to obtain additional part information including price, inventory and certifications: [N Male to N Female Bulkhead Cable Using PE-SR405FL Coax , LF Solder PE3C8368LF](#)



## N Male to N Female Bulkhead Cable Using PE-SR405FL Coax , LF Solder

### RF Cable Assemblies Technical Data Sheet

**PE3C8368LF**

#### Electrical Specifications

Description	Minimum	Typical	Maximum	Units
Frequency Range	DC		3	GHz
VSWR			1.4:1	
Velocity of Propagation		69.5		%
Capacitance		29 [95.14]		pF/ft [pF/m]
DC Resistance Inner Conductor		65.7 [215.55]		Ω/1000ft [Ω/Km]
DC Resistance Outer Conductor		10.2 [33.46]		Ω/1000ft [Ω/Km]

#### Specifications by Frequency

Description	F1	F2	F3	F4	F5	Units
Frequency	0.5	1	3			GHz
Insertion Loss (Typ.)	0.15	0.225	0.387			dB/ft
	0.49	0.74	1.27			dB/m

#### Electrical Specification Notes:

Insertion Loss does not include the loss of the connectors. Insertion Loss is estimated as 0.1 dB per connector.

#### Mechanical Specifications

##### Cable Assembly

Weight 0.161 lbs [73.03 g]

##### Cable

Cable Type PE-SR405FL  
 Impedance 50 Ohms  
 Inner Conductor Type Solid  
 Inner Conductor Material and Plating Copper Clad Steel, Silver  
 Dielectric Type PTFE  
 Number of Shields 1  
 Outer Conductor Material and Plating Copper, Tin  
 Repeated Minimum Bend Radius 0.78 in [19.81 mm]

Click the following link (or enter part number in "SEARCH" on website) to obtain additional part information including price, inventory and certifications: [N Male to N Female Bulkhead Cable Using PE-SR405FL Coax , LF Solder PE3C8368LF](#)



N Male to N Female Bulkhead Cable Using  
PE-SR405FL Coax , LF Solder

## RF Cable Assemblies Technical Data Sheet

**PE3C8368LF**

### Connectors

Description	Connector 1	Connector 2
Type	N Male	N Female Bulkhead
Specification		MIL-STD-348A
Impedance	50 Ohms	50 Ohms
Contact Material and Plating	Brass, Gold over Nickel	Brass, Gold
Contact Plating Specification		30 µin minimum
Dielectric Type	PTFE	PTFE
Body Material and Plating	Brass, Nickel	Brass, Nickel
Body Plating Specification		100 µin minimum
Coupling Nut Material and Plating	Brass, Nickel	

**Compliance Certifications** (see [product page](#) for current document)

### Plotted and Other Data

Notes:

Click the following link (or enter part number in "SEARCH" on website) to obtain additional part information including price, inventory and certifications: [N Male to N Female Bulkhead Cable Using PE-SR405FL Coax , LF Solder PE3C8368LF](#)



## N Male to N Female Bulkhead Cable Using PE-SR405FL Coax , LF Solder

### RF Cable Assemblies Technical Data Sheet

**PE3C8368LF**

#### How to Order

Part Number Configuration:

**PE3C8368LF**

- **xx**

**uu**

Unit of Measure:  
cm = Centimeters  
<blank> = Inches  
Length  
Base Number

Example: PE3C8368LF-12 = 12 inches long cable  
PE3C8368LF-100cm = 100 cm long cable

N Male to N Female Bulkhead Cable Using PE-SR405FL Coax , LF Solder from Pasternack Enterprises has same day shipment for domestic and International orders. Our RF, microwave and millimeter wave products maintain a 99.4% availability and are part of the broadest selection in the industry.

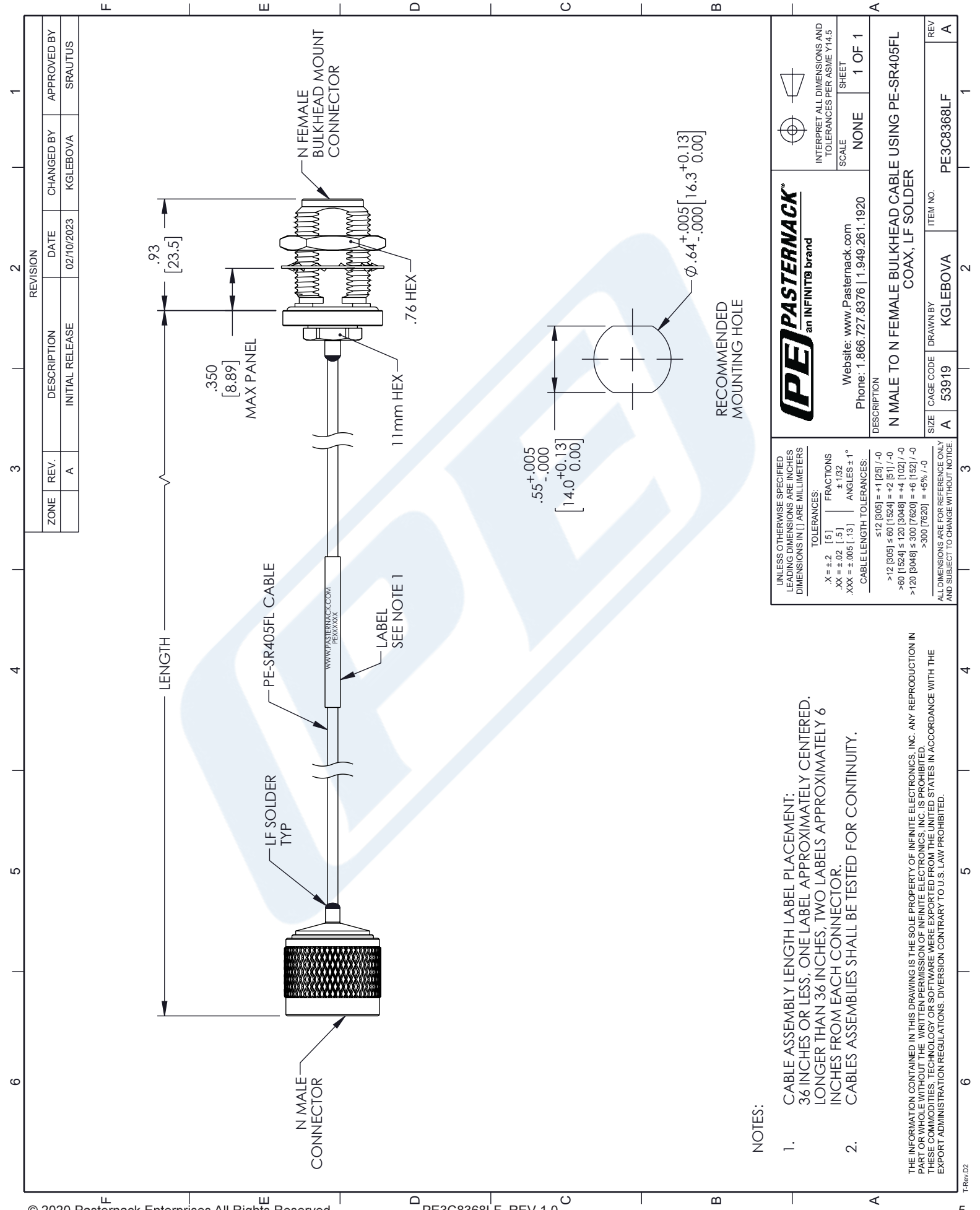
Click the following link (or enter part number in "SEARCH" on website) to obtain additional part information including price, inventory and certifications: [N Male to N Female Bulkhead Cable Using PE-SR405FL Coax , LF Solder PE3C8368LF](#)

URL: <https://www.pasternack.com/n-male-to-n-female-bulkhead-cable-using-pe-sr405fl-lf-solder-pe3c8368lf-p.aspx>

The information contained in this document is accurate to the best of our knowledge and representative of the part described herein. It may be necessary to make modifications to the part and/or the documentation of the part, in order to implement improvements. Pasternack reserves the right to make such changes as required. Unless otherwise stated, all specifications are nominal. Pasternack does not make any representation or warranty regarding the suitability of the part described herein for any particular purpose, and Pasternack does not assume any liability arising out of the use of any part or documentation.

# PE3C8368LF CAD Drawing

N Male to N Female Bulkhead Cable Using PE-SR405FL Coax , LF Solder



**PASTERNAK**  
an INFINITE brand

Website: [www.Pasternack.com](http://www.Pasternack.com)  
Phone: 1.866.727.8376 | 1.949.261.1920

INTERPRET ALL DIMENSIONS AND TOLERANCES PER ASME Y14.5

SCALE: NONE

SHEET: 1 OF 1

DESCRIPTION

**N MALE TO N FEMALE BULKHEAD CABLE USING PE-SR405FL COAX, LF SOLDER**

SIZE	CAGE CODE	DRAWN BY	ITEM NO.
A	53919	KGLEBOVA	PE3C8368LF

REV A