

## 7/16 DIN Male to 7/16 DIN Male Cable Using RG225 Coax with HeatShrink



### PE3C8662/HS

#### Configuration

- Connector 1: 7/16 DIN Male
- Connector 2: 7/16 DIN Male
- Cable Type: RG225
- Coax Flex Type: Flexible

#### Features

- Max Frequency 1 GHz
- 70% Phase Velocity
- Double Shielded
- PTFE (FG) Jacket

#### Applications

- General Purpose
- Laboratory Use

#### Description

Pasternack's PE3C8662/HS 7/16 DIN male to 7/16 DIN male cable using RG225 coax is part of our full line of RF components available for same-day shipping. Pasternack's flexible RF cable assemblies are ideal for applications where tight bends and flexure are required. This Pasternack 7/16 DIN to 7/16 DIN cable assembly has a male to male gender configuration with 50 ohm flexible RG225 coax. The PE3C8662/HS 7/16 DIN male to 7/16 DIN male cable assembly operates to 1 GHz. The double shielding of this Pasternack cable assembly provides excellent shielding effectiveness.

Custom versions of most RF cable assemblies can be built and shipped same day. Custom cable assembly lengths can be obtained by specifying the desired length on the web site at time of order or by contacting a sales representative. Other available RF cable assembly value added services include connector orientation or clocking, heat shrink booting and custom labeling. RF testing can also be performed to document the electrical performance of your cable assembly.

#### Electrical Specifications

Description	Minimum	Typical	Maximum	Units
Frequency Range	DC		1,000	MHz
VSWR			1.4:1	
Velocity of Propagation		70		%
Capacitance		29.4 [96.46]		pF/ft [pF/m]
Operating Voltage (AC)			2,700	Vrms

#### Specifications by Frequency

7/16 DIN Male to 7/16 DIN Male Cable  
Using RG225 Coax with HeatShrink



**PE3C8662/HS**

Part Number	Length	Description	F1	F2	F3	F4	F5	Units	Weight (lbs)
			Frequency	50	100	250	500	1000	
PE3C8662/HS	Custom Lengths Available	Insertion Loss (Typ.)	0.012	0.021	0.03	0.045	0.075	dB/ft	
			0.04	0.07	0.1	0.15	0.25	dB/m	
PE3C8662/HS-24	24 inch	Insertion Loss (Typ.)	0.23	0.25	0.26	0.29	0.35	dB	0.801
PE3C8662/HS-36	36 inch	Insertion Loss (Typ.)	0.24	0.27	0.29	0.34	0.43	dB	0.974
PE3C8662/HS-48	48 inch	Insertion Loss (Typ.)	0.25	0.29	0.32	0.38	0.5	dB	1.147
PE3C8662/HS-60	60 inch	Insertion Loss (Typ.)	0.26	0.31	0.35	0.43	0.58	dB	1.32
PE3C8662/HS-72	72 inch	Insertion Loss (Typ.)	0.28	0.33	0.38	0.47	0.65	dB	1.493

The insertion loss data for the base model does not include loss due to the connectors. Each length includes insertion loss due to the connectors.

Loss due to Connector 1:	0.1 dB
Loss due to Connector 2:	0.1 dB
Base Weight:	0.627 pounds
Additional Weight per Inch:	0.01442 pounds

**Mechanical Specifications**

**Cable Assembly**

Width/Diameter 0.5 in [12.7 mm]

**Cable**

Cable Type	RG225
Impedance	50 Ohms
Inner Conductor Type	Stranded
Inner Conductor Material and Plating	Copper, Silver
Dielectric Type	PTFE
Number of Shields	2
Shield Layer 1	Silver Plated Copper Braid
Shield Layer 2	Silver Plated Copper Braid
Jacket Material	PTFE (FG), Tan
Jacket Diameter	0.43 in [10.92 mm]

7/16 DIN Male to 7/16 DIN Male Cable  
Using RG225 Coax with HeatShrink



**PE3C8662/HS**

**Connectors**

Description	Connector 1	Connector 2
Type	7/16 DIN Male	7/16 DIN Male
Specification	IEC 169-4	IEC 169-4
Impedance	50 Ohms	50 Ohms
Configuration	Straight	Straight
Contact Material and Plating	Brass, Gold	Brass, Gold
Contact Plating Specification	30 µin minimum	30 µin minimum
Dielectric Type	PTFE	PTFE
Body Material and Plating	Brass, Nickel	Brass, Nickel
Body Plating Specification	100 µin minimum	100 µin minimum
Coupling Nut Material and Plating	Brass, Nickel	Brass, Nickel
Coupling Nut Plating Specification	100 µin minimum	100 µin minimum
Hex Size	32 mm	32 mm
Torque	18.417 ft-lbs 24.97 Nm	18.417 ft-lbs 24.97 Nm

**Environmental Specifications**

Operating Range Temperature -55 to +155 deg C

**Compliance Certifications** (see [product page](#) for current document)

**Plotted and Other Data**

Notes:

7/16 DIN Male to 7/16 DIN Male Cable  
Using RG225 Coax with HeatShrink

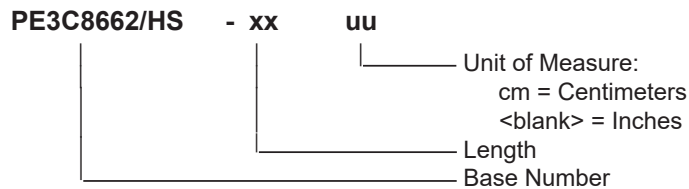


**PE3C8662/HS**

**Typical Performance Data**

**How to Order**

Part Number Configuration:



Example: PE3C8662/HS-12 = 12 inches long cable  
PE3C8662/HS-100cm = 100 cm long cable

7/16 DIN Male to 7/16 DIN Male Cable Using RG225 Coax with HeatShrink from Pasternack Enterprises has same day shipment for domestic and International orders. Our RF, microwave and millimeter wave products maintain a 99.4% availability and are part of the broadest selection in the industry.

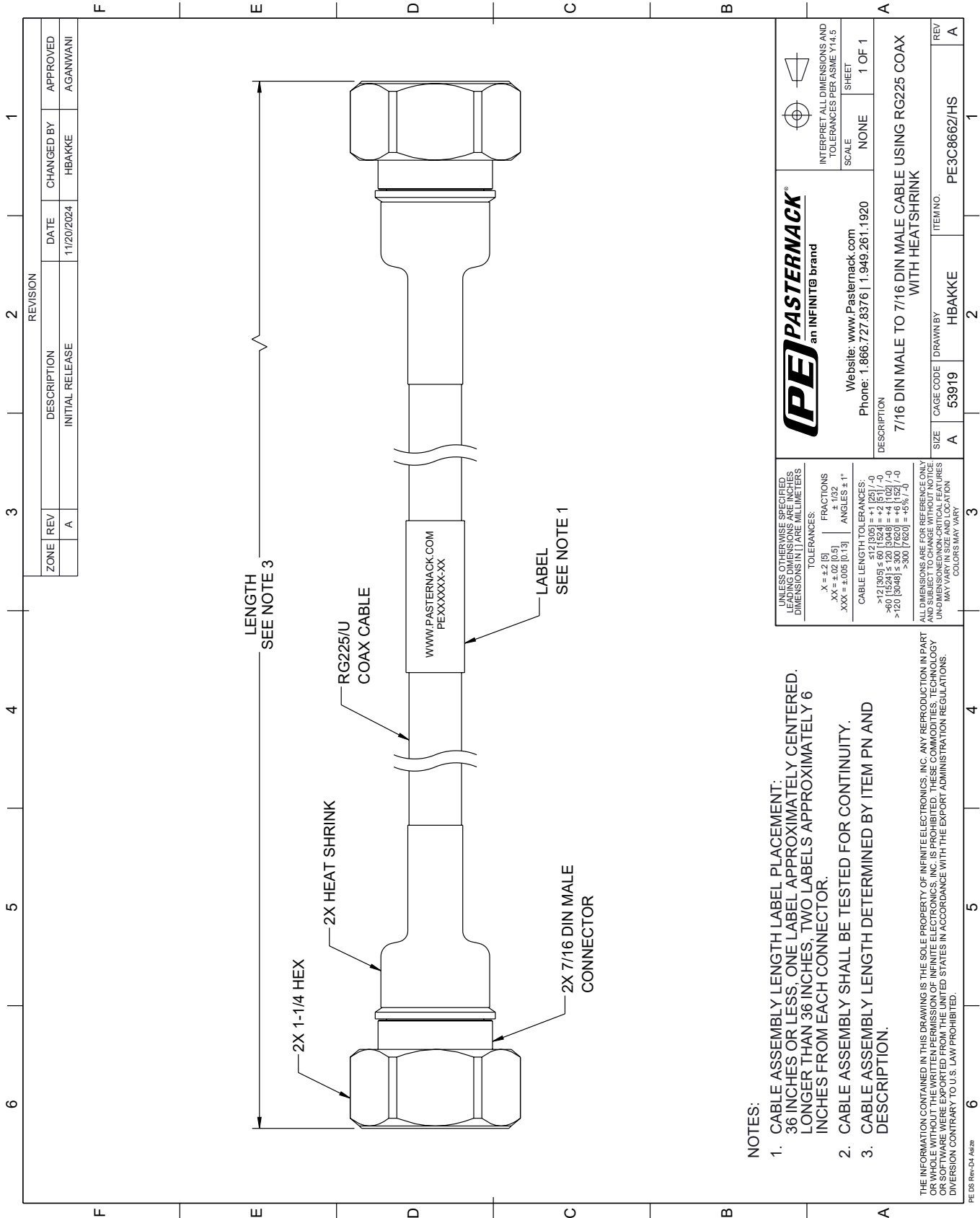
Click the following link (or enter part number in "SEARCH" on website) to obtain additional part information including price, inventory and certifications: [7/16 DIN Male to 7/16 DIN Male Cable Using RG225 Coax with HeatShrink PE3C8662/HS](https://www.pasternack.com/7-16-din-male-to-7-16-din-male-cable-using-rg225-with-heatshrink-pe3c8662-hs)

URL: <https://www.pasternack.com/7-16-din-male-to-7-16-din-male-cable-using-rg225-with-heatshrink-pe3c8662-hs-p.aspx>

The information contained within this document is accurate to the best of our knowledge and representative of the part described herein. It may be necessary to make modifications to the part and/or the documentation of the part in order to impliment improvements. Pasternack Enterprises reserves the right to make such changes as required. Unless otherwise stated, all specifications are nominal. Pasternack Enterprises does not make any representation or warranty regarding the suitability of the part described herein for any particular purpose, and Pasternack Enterprises does not assume liability arising out of the use of any part or document.

# PE3C8662/HS CAD Drawing

7/16 DIN Male to 7/16 DIN Male Cable Using RG225 Coax with HeatShrink



REVISION		DATE	CHANGED BY	APPROVED
ZONE	REV			
	A	11/20/2024	HBAKKE	AGANWANI
DESCRIPTION				
INITIAL RELEASE				

**NOTES:**

1. CABLE ASSEMBLY LENGTH LABEL PLACEMENT: 36 INCHES OR LESS, ONE LABEL APPROXIMATELY CENTERED. LONGER THAN 36 INCHES, TWO LABELS APPROXIMATELY 6 INCHES FROM EACH CONNECTOR.
2. CABLE ASSEMBLY SHALL BE TESTED FOR CONTINUITY.
3. CABLE ASSEMBLY LENGTH DETERMINED BY ITEM PN AND DESCRIPTION.

THE INFORMATION CONTAINED IN THIS DRAWING IS THE SOLE PROPERTY OF INFINITE ELECTRONICS, INC. ANY REPRODUCTION IN PART OR WHOLE WITHOUT THE WRITTEN PERMISSION OF INFINITE ELECTRONICS, INC. IS PROHIBITED. THESE COMMODITIES, TECHNOLOGY OR SERVICE ARE BEING EXPORTED FROM THE UNITED STATES IN ACCORDANCE WITH THE EXPORT ADMINISTRATION REGULATIONS. DIVERSION CONTRARY TO U.S. LAW PROHIBITED.

UNLESS OTHERWISE SPECIFIED, LEADING DIMENSIONS ARE IN INCHES. DIMENSIONS IN [ ] ARE MILLIMETERS.		 INTERPRET ALL DIMENSIONS AND TOLERANCES PER ASME Y14.5	
TOLERANCES:		SCALE	SHEET
.X = +.2 [5]	FRACTIONS ± 1/32	NONE	1 OF 1
.XX = ±.02 [0.5]	ANGLES ± 1°		
.XXX = ±.005 [0.13]			
CABLE LENGTH TOLERANCES:			
>12 [305] ≤ 60 [1524]	± .1 [25]		
>60 [1524] ≤ 120 [3048]	± .4 [102]		
>120 [3048] ≤ 300 [7620]	± .5 [12.7]		
>300 [7620]	± .5 [12.7]		
ALL DIMENSIONS ARE FOR REFERENCE ONLY. UNDIMENSIONED/NON-CRITICAL FEATURES MAY VARY IN SIZE AND LOCATION. COLORS MAY VARY.			

**PE PASTERNAK**  
an INFINIT<sup>®</sup> brand

Website: [www.Pasternack.com](http://www.Pasternack.com)  
Phone: 1.866.727.8376 | 1.949.261.1920

DESCRIPTION			
7/16 DIN MALE TO 7/16 DIN MALE CABLE USING RG225 COAX WITH HEATSHRINK			
SIZE	CAGE CODE	DRAWN BY	ITEM NO.
A	53919	HBAKKE	PE3C8662/HS
REV			
A			