

MMCX Plug Right Angle to MMCX Plug Right Angle using RG178 Coax Cable (Bronze Contact)



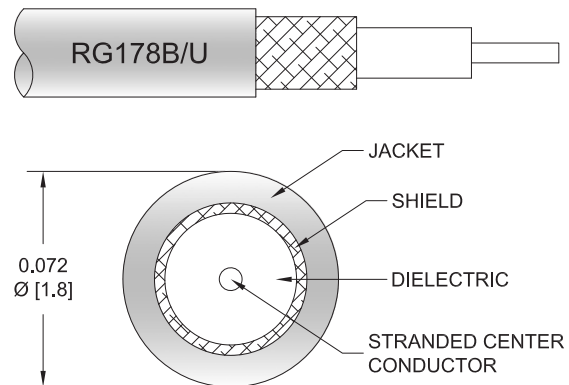
PE3C9839

Configuration

- Connector 1: MMCX Plug Right Angle
- Connector 2: MMCX Plug Right Angle
- Cable Type: RG178

Features

- Max Frequency 3 GHz
- 70% Phase Velocity
- VSWR of 1.4:1



Applications

- General Purpose
- Laboratory Use
- Military
- Aerospace
- Wireless Communications
- General Purpose Test

Description

Pasternack's PE3C9839 MMCX plug right angle to MMCX plug right angle cable using RG178 is part of our full line of RF components available for same-day shipping. This Pasternack MMCX to MMCX cable assembly has a plug to plug gender configuration with 50 ohm RG178. The PE3C9839 MMCX plug to MMCX plug cable assembly operates to 3 GHz. The right angle MMCX interfaces on the RG178 cable allow for easier connections in tight spaces.

Custom versions of most RF cable assemblies can be built and shipped same day. Custom cable assembly lengths can be obtained by specifying the desired length on the web site at time of order or by contacting a sales representative. Other available RF cable assembly value added services include connector orientation or clocking, heat shrink booting and custom labeling. RF testing can also be performed to document the electrical performance of your cable assembly.

Electrical Specifications

Description	Minimum	Typical	Maximum	Units
Frequency Range	DC		3	GHz
VSWR			1.4:1	
Velocity of Propagation		70		%
Capacitance		29.4 [96.46]		pF/ft [pF/m]

Specifications by Frequency

Description	F1	F2	F3	F4	F5	Units
Frequency	0.1	0.25	0.5	1	3	GHz
Insertion Loss (Typ.)	0.13	0.2	0.3	0.4	0.73	dB/ft
	0.43	0.66	0.98	1.31	2.4	dB/m

MMCX Plug Right Angle to MMCX Plug Right Angle using RG178 Coax Cable (Bronze Contact)



PE3C9839

Electrical Specification Notes:

Insertion Loss does not include the loss of the connectors. Insertion Loss is estimated as 0.2 dB per connector

Mechanical Specifications

Cable Assembly

Width/Diameter	0.5 in [12.7 mm]
Weight	0.126 lbs [57.15 g]

Cable

Cable Type	RG178
Impedance	50 Ohms
Inner Conductor Type	Stranded
Inner Conductor Material and Plating	Copper Clad Steel, Silver
Dielectric Type	PTFE

Connectors

Description	Connector 1	Connector 2
Type	MMCX Plug Right Angle	MMCX Plug Right Angle
Impedance	50 Ohms	50 Ohms
Configuration	Right Angle	Right Angle
Contact Material and Plating	Bronze, Gold over Copper	Beryllium Copper, Gold over Copper
Body Material and Plating	Bronze, Copper-Tin-Zinc Alloy	Beryllium Copper, Copper-Tin-Zinc Alloy

Environmental Specifications

Compliance Certifications (see [product page](#) for current document)

Plotted and Other Data

Notes:

Values at 25°C, sea level.

MMCX Plug Right Angle to MMCX Plug Right Angle using RG178 Coax Cable (Bronze Contact)



PE3C9839

Typical Performance Data

How to Order

Part Number Configuration:

PE3C9839

- **xx**

uu

Unit of Measure:
cm = Centimeters
<blank> = Inches
Length
Base Number

Example: PE3C9839-12 = 12 inches long cable
PE3C9839-100cm = 100 cm long cable

MMCX Plug Right Angle to MMCX Plug Right Angle using RG178 Coax Cable (Bronze Contact) from Pasternack Enterprises has same day shipment for domestic and International orders. Our RF, microwave and millimeter wave products maintain a 99.4% availability and are part of the broadest selection in the industry.

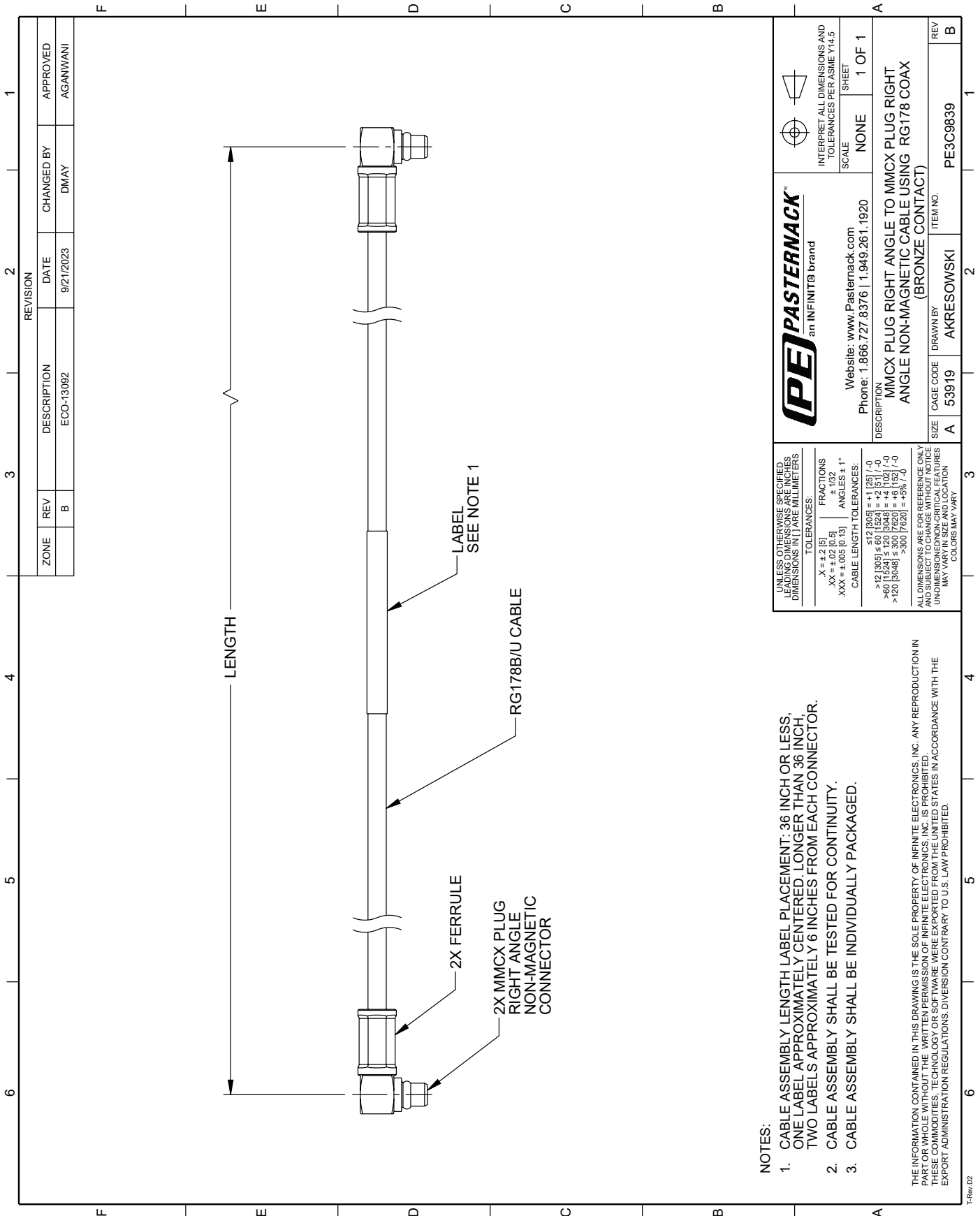
Click the following link (or enter part number in "SEARCH" on website) to obtain additional part information including price, inventory and certifications: [MMCX Plug Right Angle to MMCX Plug Right Angle using RG178 Coax Cable \(Bronze Contact\) PE3C9839](#)

URL: <https://www.pasternack.com/mmcx-plug-right-angle-to-mmcx-plug-non-magnetic-cable-using-rg178-pe3c9839-p.aspx>

The information contained within this document is accurate to the best of our knowledge and representative of the part described herein. It may be necessary to make modifications to the part and/or the documentation of the part in order to implement improvements. Pasternack Enterprises reserves the right to make such changes as required. Unless otherwise stated, all specifications are nominal. Pasternack Enterprises does not make any representation or warranty regarding the suitability of the part described herein for any particular purpose, and Pasternack Enterprises does not assume liability arising out of the use of any part or document.

PE3C9839 CAD Drawing

MMCX Plug Right Angle to MMCX Plug Right Angle using RG178 Coax Cable (Bronze Contact)



NOTES:

1. CABLE ASSEMBLY LENGTH LABEL PLACEMENT: 36 INCH OR LESS, ONE LABEL APPROXIMATELY CENTERED, LONGER THAN 36 INCH, TWO LABELS APPROXIMATELY 6 INCHES FROM EACH CONNECTOR.
2. CABLE ASSEMBLY SHALL BE TESTED FOR CONTINUITY.
3. CABLE ASSEMBLY SHALL BE INDIVIDUALLY PACKAGED.

THE INFORMATION CONTAINED IN THIS DRAWING IS THE SOLE PROPERTY OF INFINITE ELECTRONICS, INC. ANY REPRODUCTION IN PART OR WHOLE, WITHOUT THE WRITTEN PERMISSION OF INFINITE ELECTRONICS, INC. IS PROHIBITED. THESE COMMODITIES, TECHNOLOGY OR SOFTWARE WERE EXPORTED FROM THE UNITED STATES IN ACCORDANCE WITH THE EXPORT ADMINISTRATION REGULATIONS. DIVERSION CONTRARY TO U.S. LAW PROHIBITED.

UNLESS OTHERWISE SPECIFIED LEADING DIMENSIONS ARE INCHES DIMENSIONS IN [] ARE MILLIMETERS	
X = ±.2 [5]	FRACTIONS ± 1/32
.XX = ±.02 [0.5]	ANGLES ± 1°
.XXX = ±.005 [0.13]	CABLE LENGTH TOLERANCES:
	<12 [305] ≤ +1 [25] / -0
	>12 [305] ≤ 60 [1524] = +2 [51] / -0
	>60 [1524] ≤ 120 [3048] = +4 [102] / -0
	>120 [3048] ≤ 300 [7620] = +6 [152] / -0
	>300 [7620] = +9% [-7.0]
ALL DIMENSIONS ARE FOR REFERENCE ONLY AND SUBJECT TO CHANGE WITHOUT NOTICE UNLESS OTHERWISE SPECIFIED IN DIMENSIONS MAY VARY IN SIZE AND LOCATION COLORS MAY VARY	

		INTERPRET ALL DIMENSIONS AND TOLERANCES PER ASME Y14.5 SCALE NONE SHEET 1 OF 1
Website: www.Pasternack.com Phone: 1.866.727.8376 1.949.261.1920		
DESCRIPTION MMCX PLUG RIGHT ANGLE TO MMCX PLUG RIGHT ANGLE NON-MAGNETIC CABLE USING RG178 COAX (BRONZE CONTACT)		
SIZE A	CAGE CODE 53919	DRAWN BY AKRESOWSKI
REV B	ITEM NO. PE3C9839	SHEET 1 OF 1