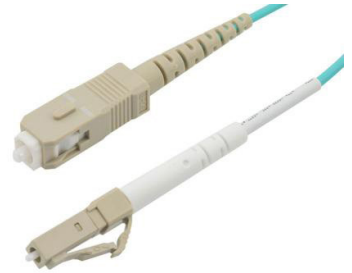


Fiber Optic Patch Cable, Simplex LC UPC to SC UPC, MM OM4, 2.0mm LSZH, Aqua



PE3FCA024

Features

- OM4 multimode fiber optic cable assembly
- Simplex LC/UPC to Simplex SC/UPC
- 2.0mm LSZH (low smoke zero halogen) rated cable for indoor applications
- Custom lengths available with the same fast delivery.

Applications

- Telecom & Networking
- Data Centers
- Enterprise and Corporate Networks
- Broadcasting & Media Production
- Military & Defense
- Healthcare & Medical Imaging
- Transportation & Rail
- Oil & Gas

Description

The PE3FCA024 fiber optic patch cord from Pasternack is a high-performance OM4 fiber optic cable assembly, tailored for superior data transmission in high-demand environments. Equipped with Simplex LC/UPC to SC/UPC connectors, this OM4 simplex fiber optic patch cable is optimized for indoor use and comes with a LSZH (low smoke zero halogen) rating that adheres to fire and safety requirements. With a 2.0mm diameter and aqua color, this fiber optic jumper is easily identifiable in complex network setups. Its operating temperature range of -20°C to 70°C and storage temperature of -40°C to 70°C ensures reliable operation across a variety of environmental conditions.

As an OM4 fiber optic jumper, Pasternack's PE3FCA024 is designed for ultra-high-speed, high-bandwidth data transmission, supporting greater distances and faster speeds than OM1 and OM3 fiber. This makes it ideal for Telecom & Networking, Data Centers, and Enterprise and Corporate Networks, where extended reach and top-tier fiber performance is crucial. Custom lengths are available to meet specific installation needs, providing flexibility for various setups while maintaining quick delivery and consistent quality.

Beyond standard networking, the Pasternack's PE3FCA024 OM4 fiber patch cord supports specialized applications in industries like Broadcasting & Media Production, Military & Defense, and Healthcare & Medical Imaging. This fiber assembly delivers a versatile and durable solution for any setup requiring robust, high-speed data transmission in controlled indoor environments. For further information on similar fiber optic products, our expert technical support and trained sales team can get you the ideal fiber optic simplex cable assembly as per your requirements.

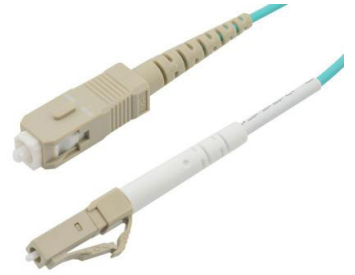
Configuration

Function	Patch
Cable Type	Simplex Multimode
Mode	Multimode
Mode Class	OM4
Fiber Diameter	50/125 um
Connection 1 Type	LC
Connection 1 Polish	UPC
Connection 2 Type	SC
Connection 2 Polish	UPC
Cable Color	Aqua Blue

Optical Specifications

Description	Minimum	Typical	Maximum	Units
Return Loss	30			dB

Fiber Optic Patch Cable, Simplex LC UPC to SC UPC, MM OM4, 2.0mm LSZH, Aqua



PE3FCA024

Optical Specifications

Description	Minimum	Typical	Maximum	Units
Insertion Loss			0.3	dB

Mechanical Specifications

Cable Assembly

Width/Diameter 2 mm

Cable

Cable Type Patch
Static Bend Radius 15 mm
Dynamic Bend Radius 30 mm
Max Crush Resistance, Short Term (N/100mm) 200
Max Crush Resistance, Long Term (N/100mm) 50

Connectors

Description	Connector 1	Connector 2
Type	LC	SC
Connector Polish	UPC	UPC

Environmental Specifications

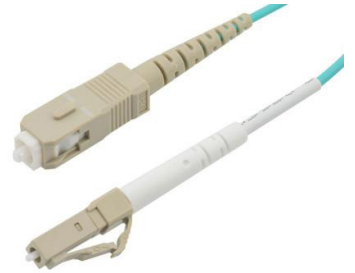
Operating Range Temperature -20 to +70 deg C
Storage Range Temperature -40 to +70 deg C
Ingress Protection (IP) Rating Non-Rated

Compliance Certifications (see [product page](#) for current document)

Plotted and Other Data

Notes:

Fiber Optic Patch Cable, Simplex LC UPC to SC UPC, MM OM4, 2.0mm LSZH, Aqua



PE3FCA024

Typical Performance Data

How to Order

Part Number Configuration:

PE3FCA024

- xx

uu

Unit of Measure:

M = Meters

<blank> = Inches

Length

Base Number

Example: PE3FCA024-12 = 12 inches long cable
PE3FCA024-100cm = 100 cm long cable

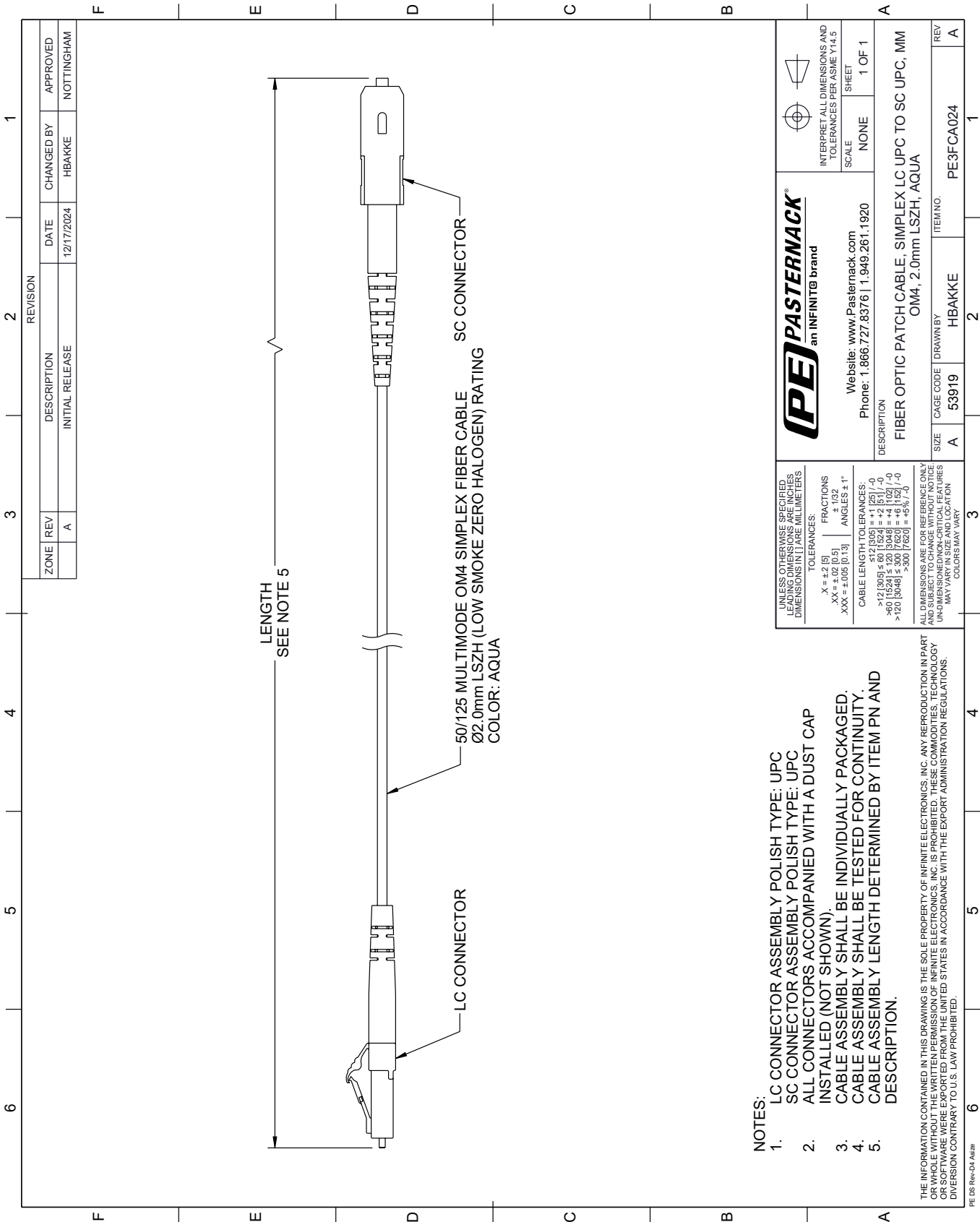
Fiber Optic Patch Cable, Simplex LC UPC to SC UPC, MM OM4, 2.0mm LSZH, Aqua from Pasternack Enterprises has same day shipment for domestic and International orders. Our RF, microwave and millimeter wave products maintain a 99.4% availability and are part of the broadest selection in the industry.

Click the following link (or enter part number in "SEARCH" on website) to obtain additional part information including price, inventory and certifications: [Fiber Optic Patch Cable, Simplex LC UPC to SC UPC, MM OM4, 2.0mm LSZH, Aqua PE3FCA024](#)

URL: <https://www.pasternack.com/lc-sc-multimode-fiber-optic-cable-assembly-pe3fca024-p.aspx>

The information contained within this document is accurate to the best of our knowledge and representative of the part described herein. It may be necessary to make modifications to the part and/or the documentation of the part in order to implement improvements. Pasternack Enterprises reserves the right to make such changes as required. Unless otherwise stated, all specifications are nominal. Pasternack Enterprises does not make any representation or warranty regarding the suitability of the part described herein for any particular purpose, and Pasternack Enterprises does not assume liability arising out of the use of any part or document.

PE3FCA024 CAD Drawing
Fiber Optic Patch Cable, Simplex LC UPC to SC UPC, MM OM4, 2.0mm LSZH, Aqua



- NOTES:
- 1. LC CONNECTOR ASSEMBLY POLISH TYPE: UPC
- 2. SC CONNECTOR ASSEMBLY POLISH TYPE: UPC
- 3. ALL CONNECTORS ACCOMPANIED WITH A DUST CAP
- 4. INSTALLED (NOT SHOWN).
- 5. CABLE ASSEMBLY SHALL BE INDIVIDUALLY PACKAGED.
- 6. CABLE ASSEMBLY SHALL BE TESTED FOR CONTINUITY.
- 7. CABLE ASSEMBLY LENGTH DETERMINED BY ITEM PN AND DESCRIPTION.

UNLESS OTHERWISE SPECIFIED, LEADING DIMENSIONS ARE IN INCHES. DIMENSIONS IN [] ARE MILLIMETERS.		TOLERANCES:		FRACTIONS		ANGLES	
.X = ±.2 [5]		.XX = ±.02 [0.5]		.XXX = ±.005 [0.13]		± 1/32	
CABLE LENGTH TOLERANCES:		>12 [305] ≤ 60 [1524] = ±1 [25] / -0		>60 [1524] ≤ 120 [3048] = ±4 [102] / -0		>120 [3048] ≤ 300 [7620] = ±5% / -0	
ALL DIMENSIONS ARE FOR REFERENCE ONLY AND SUBJECT TO CHANGE WITHOUT NOTICE. UNLESS OTHERWISE SPECIFIED, DIMENSIONS ARE UNDIMENSIONED/NON-CRITICAL FEATURES. COLORS MAY VARY.							
PE PASTERNAK® an INFINITE® brand				Website: www.Pasternack.com Phone: 1.866.727.8376 1.949.261.1920		INTERPRET ALL DIMENSIONS AND TOLERANCES PER ASME Y14.5	
DESCRIPTION				FIBER OPTIC PATCH CABLE, SIMPLEX LC UPC TO SC UPC, MM OM4, 2.0mm LSZH, AQUA		SCALE	
SIZE				CAGE CODE		SHEET	
A				53919		1 OF 1	
DRAWN BY				ITEM NO.		REV	
HBAKKE				PE3FCA024		A	