

## Fiber Optic Patch Cable, Simplex LC UPC to ST UPC, MM OM4, 2.0mm Plenum, Aqua



### PE3FCA025

#### Features

- OM4 multimode fiber optic cable assembly
- Simplex LC/UPC to Simplex ST/UPC
- 2.0mm Plenum rated cable for indoor applications
- Custom lengths available with the same fast delivery.

#### Applications

- Telecom & Networking
- Data Centers
- Enterprise and Corporate Networks
- Broadcasting & Media Production
- Military & Defense
- Healthcare & Medical Imaging
- Transportation & Rail
- Oil & Gas

#### Description

The PE3FCA025 fiber optic patch cord from Pasternack is a high-performance OM4 fiber optic cable assembly, tailored for superior data transmission in high-demand environments. Equipped with Simplex LC/UPC to ST/UPC connectors, this OM4 simplex fiber optic patch cable is optimized for indoor use and comes with a Plenum rating that adheres to fire and safety requirements. With a 2.0mm diameter and aqua color, this fiber optic jumper is easily identifiable in complex network setups. Its operating temperature range of 0°C to 60°C and storage temperature of -20°C to 60°C ensures reliable operation across a variety of environmental conditions.

As an OM4 fiber optic jumper, Pasternack's PE3FCA025 is designed for ultra-high-speed, high-bandwidth data transmission, supporting greater distances and faster speeds than OM1 and OM3 fiber. This makes it ideal for Telecom & Networking, Data Centers, and Enterprise and Corporate Networks, where extended reach and top-tier fiber performance is crucial. Custom lengths are available to meet specific installation needs, providing flexibility for various setups while maintaining quick delivery and consistent quality.

Beyond standard networking, the Pasternack's PE3FCA025 OM4 fiber patch cord supports specialized applications in industries like Broadcasting & Media Production, Military & Defense, and Healthcare & Medical Imaging. This fiber assembly delivers a versatile and durable solution for any setup requiring robust, high-speed data transmission in controlled indoor environments. For further information on similar fiber optic products, our expert technical support and trained sales team can get you the ideal fiber optic simplex cable assembly as per your requirements.

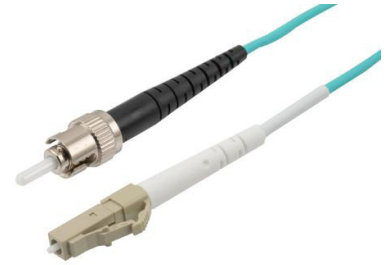
#### Configuration

Function	Patch
Cable Type	Simplex Multimode
Mode	Multimode
Mode Class	OM4
Fiber Diameter	50/125 um
Connection 1 Type	LC
Connection 1 Polish	UPC
Connection 2 Type	ST
Connection 2 Polish	UPC
Cable Color	Aqua Blue

#### Optical Specifications

Description	Minimum	Typical	Maximum	Units
Return Loss	30			dB

Fiber Optic Patch Cable, Simplex LC UPC to  
ST UPC, MM OM4, 2.0mm Plenum, Aqua



## PE3FCA025

### Optical Specifications

Description	Minimum	Typical	Maximum	Units
Insertion Loss			0.3	dB

### Mechanical Specifications

#### Cable Assembly

Width/Diameter 2 mm

#### Cable

Cable Type Patch  
Static Bend Radius 15 mm  
Dynamic Bend Radius 30 mm  
Max Crush Resistance, Short Term (N/100mm) 200  
Max Crush Resistance, Long Term (N/100mm) 50

### Connectors

Description	Connector 1	Connector 2
Type	LC	ST
Connector Polish	UPC	UPC

### Environmental Specifications

Operating Range Temperature 0 to +60 deg C  
Storage Range Temperature -20 to +60 deg C  
Ingress Protection (IP) Rating Non-Rated

**Compliance Certifications** (see [product page](#) for current document)

### Plotted and Other Data

Notes:

Fiber Optic Patch Cable, Simplex LC UPC to  
ST UPC, MM OM4, 2.0mm Plenum, Aqua



## PE3FCA025

### Typical Performance Data

### How to Order

Part Number Configuration:

**PE3FCA025**

**- xx**

**uu**

Unit of Measure:

M = Meters

<blank> = Inches

Length

Base Number

Example: PE3FCA025-12 = 12 inches long cable  
PE3FCA025-100cm = 100 cm long cable

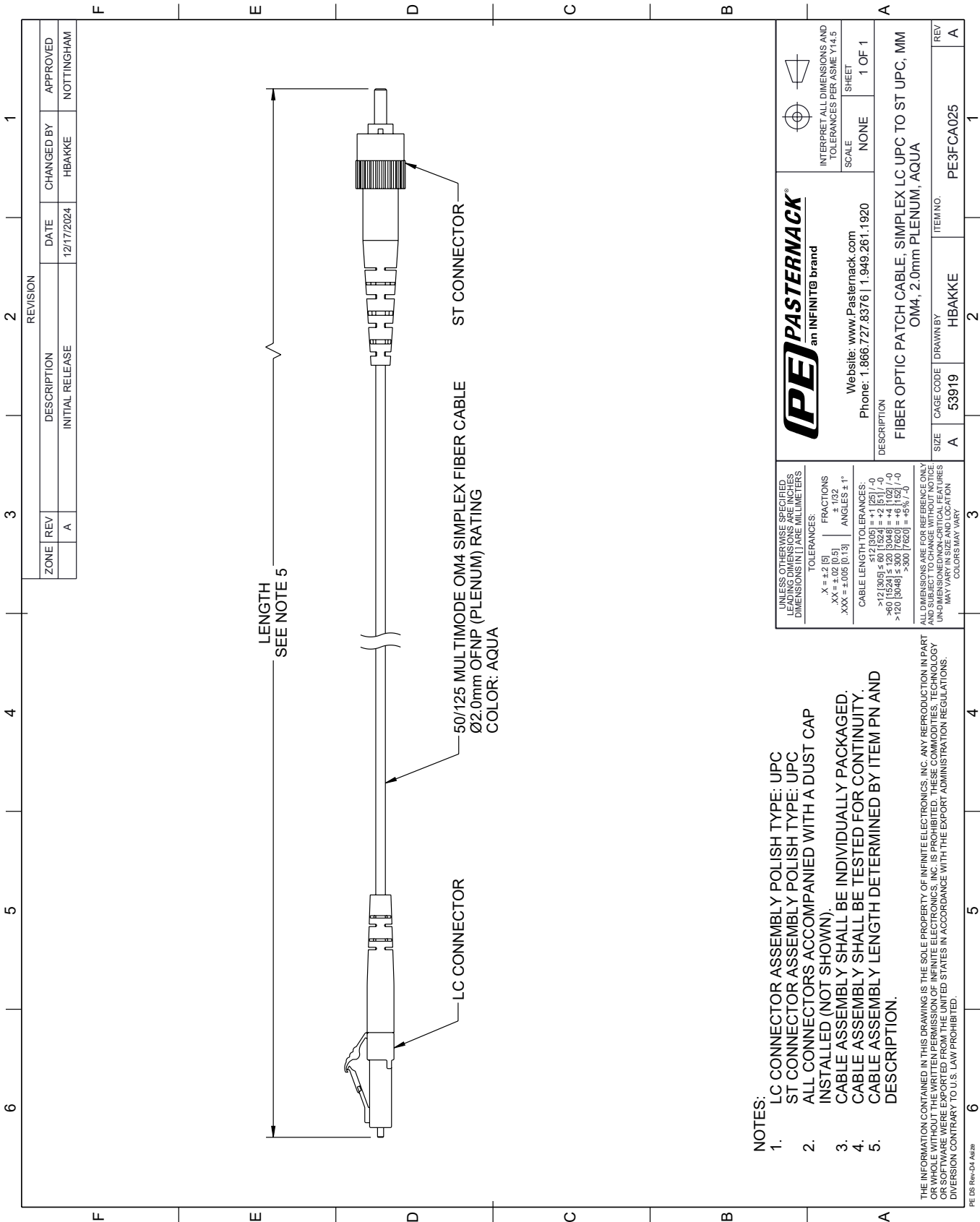
Fiber Optic Patch Cable, Simplex LC UPC to ST UPC, MM OM4, 2.0mm Plenum, Aqua from Pasternack Enterprises has same day shipment for domestic and International orders. Our RF, microwave and millimeter wave products maintain a 99.4% availability and are part of the broadest selection in the industry.

Click the following link (or enter part number in "SEARCH" on website) to obtain additional part information including price, inventory and certifications: [Fiber Optic Patch Cable, Simplex LC UPC to ST UPC, MM OM4, 2.0mm Plenum, Aqua PE3FCA025](#)



URL: <https://www.pasternack.com/lc-st-multimode-fiber-optic-cable-assembly-pe3fca025-p.aspx>

The information contained within this document is accurate to the best of our knowledge and representative of the part described herein. It may be necessary to make modifications to the part and/or the documentation of the part in order to implement improvements. Pasternack Enterprises reserves the right to make such changes as required. Unless otherwise stated, all specifications are nominal. Pasternack Enterprises does not make any representation or warranty regarding the suitability of the part described herein for any particular purpose, and Pasternack Enterprises does not assume liability arising out of the use of any part or document.

PE3FCA025 CAD Drawing
Fiber Optic Patch Cable, Simplex LC UPC to ST UPC, MM OM4, 2.0mm Plenum, Aqua



- NOTES:
1. LC CONNECTOR ASSEMBLY POLISH TYPE: UPC
2. ST CONNECTOR ASSEMBLY POLISH TYPE: UPC
3. ALL CONNECTORS ACCOMPANIED WITH A DUST CAP
4. INSTALLED (NOT SHOWN).
5. CABLE ASSEMBLY SHALL BE INDIVIDUALLY PACKAGED.
6. CABLE ASSEMBLY SHALL BE TESTED FOR CONTINUITY.
7. CABLE ASSEMBLY LENGTH DETERMINED BY ITEM PN AND DESCRIPTION.

 		INTERPRET ALL DIMENSIONS AND TOLERANCES PER ASME Y14.5	
		SCALE	SHEET 1 OF 1
DESCRIPTION			
FIBER OPTIC PATCH CABLE, SIMPLEX LC UPC TO ST UPC, MM OM4, 2.0mm PLENUM, AQUA			
SIZE	CAGE CODE	DRAWN BY	ITEM NO
A	53919	HBAKKE	PE3FCA025
REV A			

<b>PE PASTERNAK®</b> an INFINITI® brand			
Website: <a href="http://www.Pasternack.com">www.Pasternack.com</a>			
Phone: 1.866.727.8376   1.949.261.1920			
UNLESS OTHERWISE SPECIFIED, LEADING DIMENSIONS ARE IN INCHES. TRAILING DIMENSIONS ARE IN MILLIMETERS.			
TOLERANCES:			
X = ±.2 [5]		FRACTIONS	
XX = ±.02 [0.5]		ANGLES	
XXX = ±.005 [0.13]		ANGLES ± 1°	
CABLE LENGTH TOLERANCES:			
>.12 [305] ≤ .60 [1524] = ±.1 [25] / -0			
>.60 [1524] ≤ 1.20 [3048] = ±.4 [102] / -0			
>1.20 [3048] ≤ 3.00 [7620] = ±5% / -0			
>3.00 [7620] = ±.1 [25] / -0			
ALL DIMENSIONS ARE FOR REFERENCE ONLY AND SUBJECT TO CHANGE WITHOUT NOTICE. DIMENSIONS MAY VARY IN SIZE AND LOCATION. COLORS MAY VARY.			