

Fiber Optic Patch Cable, Duplex LC UPC to LC UPC, MM OM1, 2.0mm Plenum, Orange



PE3FCA046

Features

- OM1 multimode fiber optic cable assembly
- Duplex LC/UPC to duplex LC/UPC
- 2.0mm x 4.1mm Plenum rated cable for indoor applications
- Custom lengths available with the same fast delivery.

Applications

- Telecom & Networking
- Data Centers
- Enterprise and Corporate Networks
- Broadcasting & Media Production
- Military & Defense
- Healthcare & Medical Imaging
- Transportation & Rail
- Oil & Gas

Description

The PE3FCA046 fiber optic patch cord is a robust and versatile fiber optic cable assembly designed for high-performance data transmission in various environments. Equipped with duplex LC/UPC to duplex LC/UPC connectors, this duplex OM1 multimode fiber optic patch cable is optimized for indoor use, featuring a Plenum rating that ensures compliance with fire and safety standards. The 2.0mm x 4.1mm zipcord construction, combined with its orange color, makes it easy to identify in complex setups, while its operating temperature range of 0 to +60°C and storage temperature of -20° to +60°C provides reliable performance across diverse conditions.

The PE3FCA046 fiber optic jumper is ideal for applications where reliable, short-range data connectivity is critical. The multimode design of the OM1 fiber offers stable, high-speed transmission over short distances, making it suitable for Telecom & Networking, Data Centers, and Corporate Networks. With the flexibility of custom lengths, the PE3FCA046 fiber optic assembly can be tailored to meet specific installation requirements, ensuring efficient network management in high-density setups without compromising on delivery time or quality.

Beyond networking, the PE3FCA046 fiber patch cord supports an array of industry applications, from Broadcasting & Media Production and Military & Defense to Healthcare & Medical Imaging. This fiber assembly offers a reliable and durable solution for any setting requiring high-quality data transmission in a controlled, indoor environment.

Configuration

Function	Patch
Cable Type	Duplex Multimode
Mode	Multimode
Mode Class	OM1
Fiber Diameter	62.5/125 um
Connection 1 Type	LC
Connection 1 Polish	UPC
Connection 2 Type	LC
Connection 2 Polish	UPC
Cable Color	Orange

Optical Specifications

Description	Minimum	Typical	Maximum	Units
Return Loss	30			dB
Insertion Loss			0.3	dB

Mechanical Specifications

Cable Assembly	
Width/Diameter	2 mm

Fiber Optic Patch Cable, Duplex LC UPC to LC
UPC, MM OM1, 2.0mm Plenum, Orange



PE3FCA046

Weight	294.84 g [0.65 lbs]
Cable	
Cable Type	Patch
Static Bend Radius	20 mm
Dynamic Bend Radius	40 mm
Max Crush Resistance, Short Term (N/100mm)	300
Max Crush Resistance, Long Term (N/100mm)	100

Connectors

Description	Connector 1	Connector 2
Type	LC	LC
Connector Polish	UPC	UPC

Environmental Specifications

Operating Range Temperature	0 to +60 deg C
Storage Range Temperature	-20 to +60 deg C
Ingress Protection (IP) Rating	Non-Rated

Compliance Certifications (see [product page](#) for current document)

Plotted and Other Data

Notes:

Fiber Optic Patch Cable, Duplex LC UPC to LC
UPC, MM OM1, 2.0mm Plenum, Orange



PE3FCA046

Typical Performance Data

How to Order

Part Number Configuration:

PE3FCA046

- xx

uu

Unit of Measure:

M = Meters

<blank> = Inches

Length

Base Number

Example: PE3FCA046-12 = 12 inches long cable
PE3FCA046-100cm = 100 cm long cable

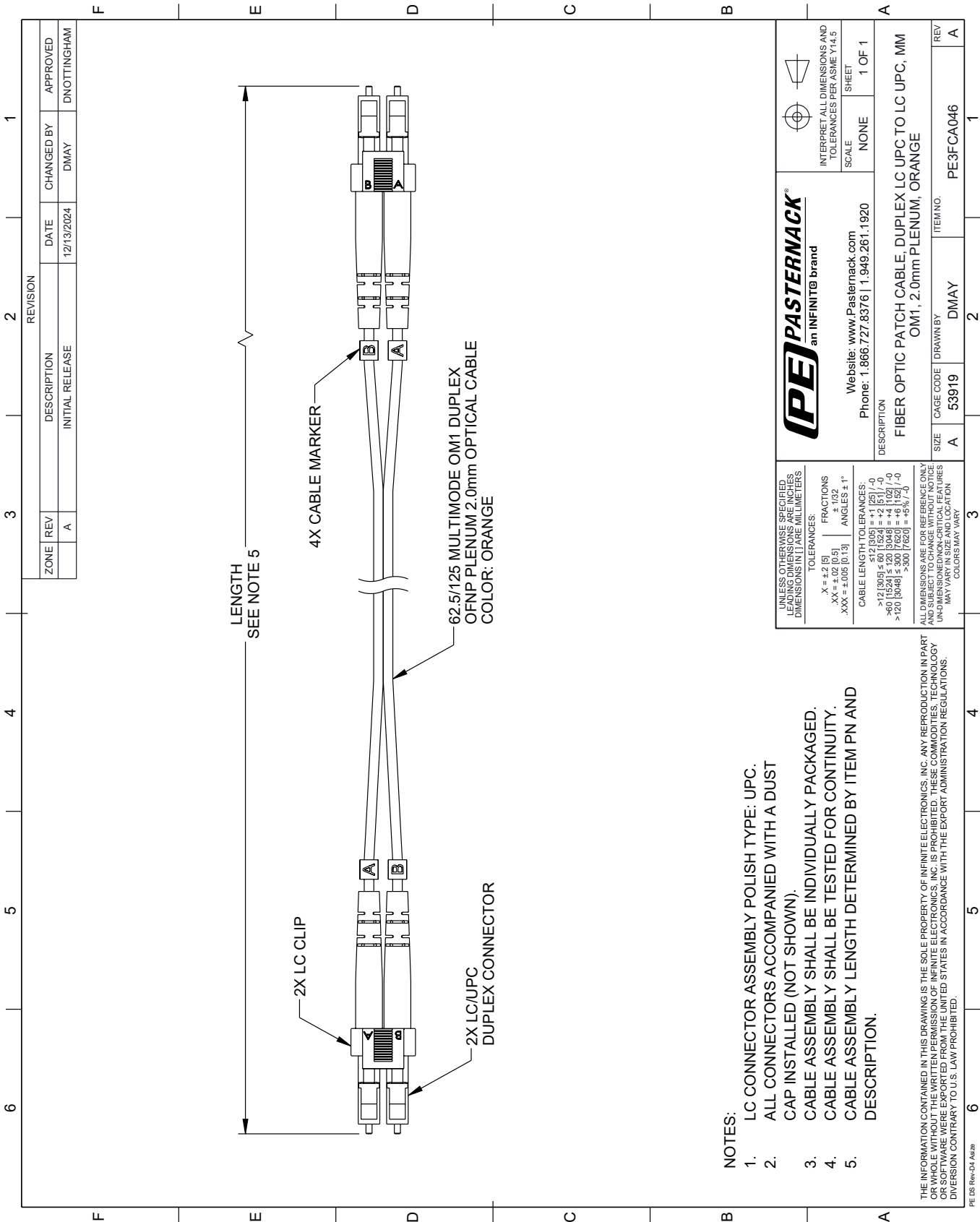
Fiber Optic Patch Cable, Duplex LC UPC to LC UPC, MM OM1, 2.0mm Plenum, Orange from Pasternack Enterprises has same day shipment for domestic and International orders. Our RF, microwave and millimeter wave products maintain a 99.4% availability and are part of the broadest selection in the industry.

Click the following link (or enter part number in "SEARCH" on website) to obtain additional part information including price, inventory and certifications: [Fiber Optic Patch Cable, Duplex LC UPC to LC UPC, MM OM1, 2.0mm Plenum, Orange PE3FCA046](#)

URL: <https://www.pasternack.com/lc-lc-multimode-fiber-optic-cable-assembly-pe3fca046-p.aspx>

The information contained within this document is accurate to the best of our knowledge and representative of the part described herein. It may be necessary to make modifications to the part and/or the documentation of the part in order to implement improvements. Pasternack Enterprises reserves the right to make such changes as required. Unless otherwise stated, all specifications are nominal. Pasternack Enterprises does not make any representation or warranty regarding the suitability of the part described herein for any particular purpose, and Pasternack Enterprises does not assume liability arising out of the use of any part or document.

PE3FCA046 CAD Drawing
Fiber Optic Patch Cable, Duplex LC UPC to LC UPC, MM OM1, 2.0mm Plenum, Orange



- NOTES:
- 1. LC CONNECTOR ASSEMBLY POLISH TYPE: UPC.
 - 2. ALL CONNECTORS ACCOMPANIED WITH A DUST CAP INSTALLED (NOT SHOWN).
 - 3. CABLE ASSEMBLY SHALL BE INDIVIDUALLY PACKAGED.
 - 4. CABLE ASSEMBLY SHALL BE TESTED FOR CONTINUITY.
 - 5. CABLE ASSEMBLY LENGTH DETERMINED BY ITEM PN AND DESCRIPTION.

THE INFORMATION CONTAINED IN THIS DRAWING IS THE SOLE PROPERTY OF INFINITE ELECTRONICS, INC. ANY REPRODUCTION IN PART OR WHOLE WITHOUT THE WRITTEN PERMISSION OF INFINITE ELECTRONICS, INC. IS PROHIBITED. THESE COMMODITIES, TECHNOLOGY OR SOFTWARE WERE EXPORTED FROM THE UNITED STATES IN ACCORDANCE WITH THE EXPORT ADMINISTRATION REGULATIONS. DIVISION CONTRARY TO U.S. LAW PROHIBITED.

UNLESS OTHERWISE SPECIFIED, LEADING DIMENSIONS ARE IN INCHES. DIMENSIONS IN [] ARE IN MILLIMETERS.		PE PASTERNAK an INFINITE brand		INTERPRET ALL DIMENSIONS AND TOLERANCES PER ASME Y14.5	
TOLERANCES:		Website: www.Pasternack.com		SCALE: NONE	
.X = ±.2 [5]		Phone: 1.866.727.8376 1.949.261.1920		SHEET 1 OF 1	
.XX = ±.02 [0.5]		DESCRIPTION		FIBER OPTIC PATCH CABLE; DUPLEX LC UPC TO LC UPC, MM OM1, 2.0mm PLENUM, ORANGE	
.XXX = ±.005 [0.13]		CABLE LENGTH TOLERANCES:		SIZE A	
ANGLES ± 1°		>12 [305] ≤ 60 [1524] = ±1 [25] / -0		CAGE CODE 53919	
CABLE LENGTH TOLERANCES:		>60 [1524] ≤ 120 [3048] = ±4 [102] / -0		DRAWN BY DMAY	
ALL DIMENSIONS ARE FOR REFERENCE ONLY. UNLESS OTHERWISE SPECIFIED, DIMENSIONS ARE IN INCHES. DIMENSIONS IN [] ARE IN MILLIMETERS.		>120 [3048] ≤ 300 [7620] = ±5% / -0		ITEM NO. PE3FCA046	
UNLESS OTHERWISE SPECIFIED, LEADING DIMENSIONS ARE IN INCHES. DIMENSIONS IN [] ARE IN MILLIMETERS.		ALL DIMENSIONS ARE FOR REFERENCE ONLY. UNLESS OTHERWISE SPECIFIED, DIMENSIONS ARE IN INCHES. DIMENSIONS IN [] ARE IN MILLIMETERS.		REV A	