

Fiber Optic Patch Cable, Dual LC UPC to SC UPC, MM OM1, 2.0mm Plenum, Orange

PE3FCA049



Features

- OM1 multimode fiber optic cable assembly
- Dual LC/UPC to dual SC/UPC
- 2.0mm x 4.1mm Plenum rated cable for indoor applications
- Custom lengths available with the same fast delivery.

Applications

- Telecom & Networking
- Data Centers
- Enterprise and Corporate Networks
- Broadcasting & Media Production
- Military & Defense
- Healthcare & Medical Imaging
- Transportation & Rail
- Oil & Gas

Description

The PE3FCA049 fiber optic patch cord is a robust and versatile fiber optic cable assembly designed for high-performance data transmission in various environments. Equipped with dual LC/UPC to dual SC/UPC connectors, this duplex OM1 multimode fiber optic patch cable is optimized for indoor use, featuring a Plenum rating that ensures compliance with fire and safety standards. The 2.0mm x 4.1mm zipcord construction, combined with its orange color, makes it easy to identify in complex setups, while its operating temperature range of 0 to +60°C and storage temperature of -20° to +60°C provides reliable performance across diverse conditions.

The PE3FCA049 fiber optic jumper is ideal for applications where reliable, short-range data connectivity is critical. The multimode design of the OM1 fiber offers stable, high-speed transmission over short distances, making it suitable for Telecom & Networking, Data Centers, and Corporate Networks. With the flexibility of custom lengths, the PE3FCA049 fiber optic assembly can be tailored to meet specific installation requirements, ensuring efficient network management in high-density setups without compromising on delivery time or quality.

Beyond networking, the PE3FCA049 fiber patch cord supports an array of industry applications, from Broadcasting & Media Production and Military & Defense to Healthcare & Medical Imaging. This fiber assembly offers a reliable and durable solution for any setting requiring high-quality data transmission in a controlled, indoor environment.

Configuration

| | |
|---------------------|------------------|
| Function | Patch |
| Cable Type | Duplex Multimode |
| Mode | Multimode |
| Mode Class | OM1 |
| Fiber Diameter | 62.5/125 um |
| Connection 1 Type | LC |
| Connection 1 Polish | UPC |
| Connection 2 Type | SC |
| Connection 2 Polish | UPC |
| Cable Color | Orange |

Optical Specifications

| Description | Minimum | Typical | Maximum | Units |
|----------------|---------|---------|---------|-------|
| Return Loss | 30 | | | dB |
| Insertion Loss | | | 0.3 | dB |

Mechanical Specifications

| | |
|-----------------------|------|
| Cable Assembly | |
| Width/Diameter | 2 mm |

Fiber Optic Patch Cable, Dual LC UPC to SC
UPC, MM OM1, 2.0mm Plenum, Orange



PE3FCA049

| | |
|--|---------------------|
| Weight | 294.84 g [0.65 lbs] |
| Cable | |
| Cable Type | Patch |
| Static Bend Radius | 20 mm |
| Dynamic Bend Radius | 40 mm |
| Max Crush Resistance, Short Term (N/100mm) | 300 |
| Max Crush Resistance, Long Term (N/100mm) | 100 |

Connectors

| Description | Connector 1 | Connector 2 |
|------------------|-------------|-------------|
| Type | LC | SC |
| Connector Polish | UPC | UPC |

Environmental Specifications

| | |
|--------------------------------|------------------|
| Operating Range Temperature | 0 to +60 deg C |
| Storage Range Temperature | -20 to +60 deg C |
| Ingress Protection (IP) Rating | Non-Rated |

Compliance Certifications (see [product page](#) for current document)

Plotted and Other Data

Notes:

Fiber Optic Patch Cable, Dual LC UPC to SC
UPC, MM OM1, 2.0mm Plenum, Orange

PE3FCA049



Typical Performance Data

How to Order

Part Number Configuration:

PE3FCA049

- xx

uu

Unit of Measure:

M = Meters

<blank> = Inches

Length

Base Number

Example: PE3FCA049-12 = 12 inches long cable
PE3FCA049-100cm = 100 cm long cable

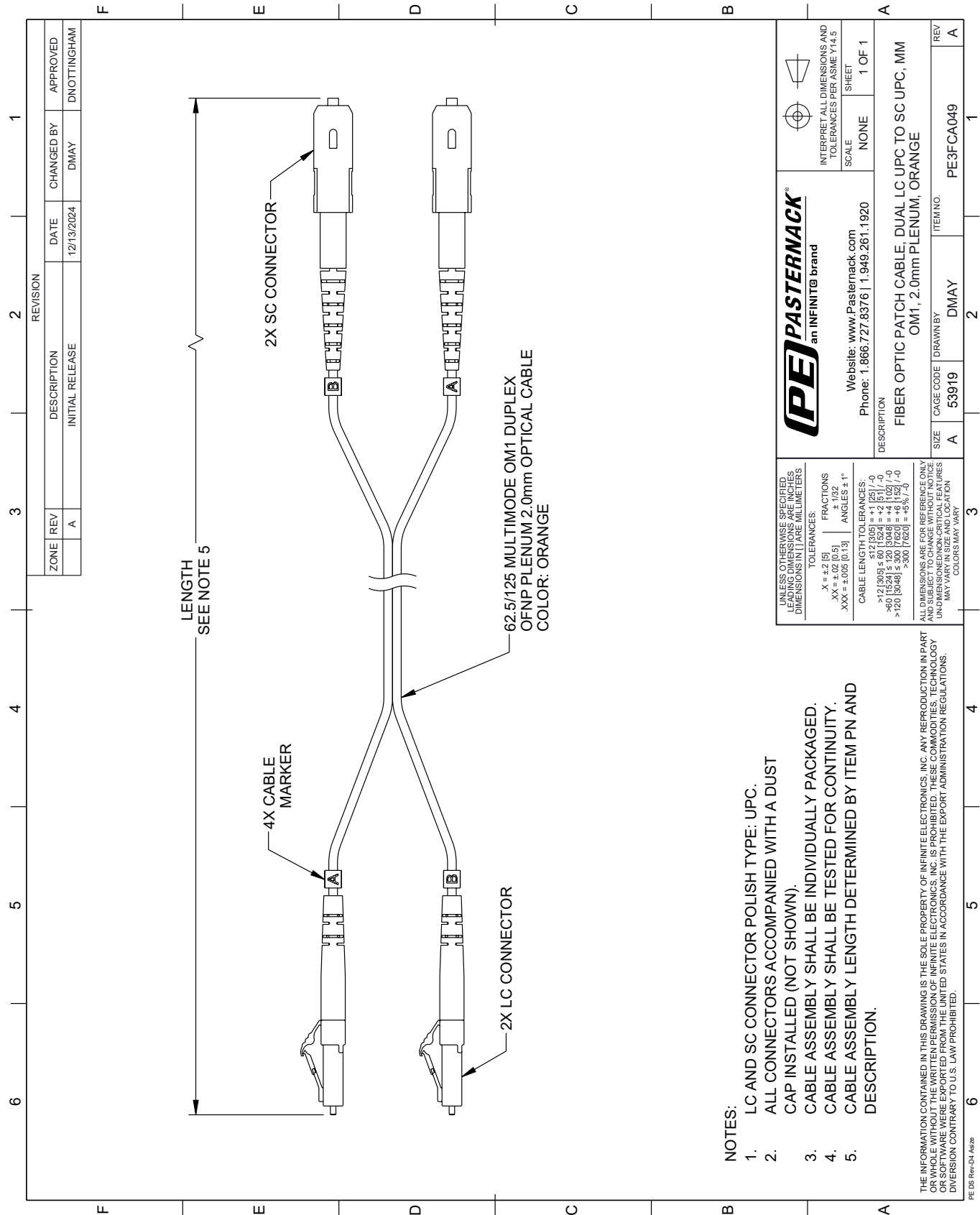
Fiber Optic Patch Cable, Dual LC UPC to SC UPC, MM OM1, 2.0mm Plenum, Orange from Pasternack Enterprises has same day shipment for domestic and International orders. Our RF, microwave and millimeter wave products maintain a 99.4% availability and are part of the broadest selection in the industry.

Click the following link (or enter part number in "SEARCH" on website) to obtain additional part information including price, inventory and certifications: [Fiber Optic Patch Cable, Dual LC UPC to SC UPC, MM OM1, 2.0mm Plenum, Orange PE3FCA049](#)

URL: <https://www.pasternack.com/lc-sc-multimode-fiber-optic-cable-assembly-pe3fca049-p.aspx>

The information contained within this document is accurate to the best of our knowledge and representative of the part described herein. It may be necessary to make modifications to the part and/or the documentation of the part in order to implement improvements. Pasternack Enterprises reserves the right to make such changes as required. Unless otherwise stated, all specifications are nominal. Pasternack Enterprises does not make any representation or warranty regarding the suitability of the part described herein for any particular purpose, and Pasternack Enterprises does not assume liability arising out of the use of any part or document.

PE3FCA049 CAD Drawing
Fiber Optic Patch Cable, Dual LC UPC to SC UPC, MM OM1, 2.0mm Plenum, Orange



- NOTES:
- 1. LC AND SC CONNECTOR POLISH TYPE: UPC.
 - 2. ALL CONNECTORS ACCOMPANIED WITH A DUST CAP INSTALLED (NOT SHOWN).
 - 3. CABLE ASSEMBLY SHALL BE INDIVIDUALLY PACKAGED.
 - 4. CABLE ASSEMBLY SHALL BE TESTED FOR CONTINUITY.
 - 5. CABLE ASSEMBLY LENGTH DETERMINED BY ITEM PN AND DESCRIPTION.

THE INFORMATION CONTAINED IN THIS DRAWING IS THE SOLE PROPERTY OF INFINITE ELECTRONICS, INC. ANY REPRODUCTION IN PART OR WHOLE WITHOUT THE WRITTEN PERMISSION OF INFINITE ELECTRONICS, INC. IS PROHIBITED. THESE COMMODITIES, TECHNOLOGY OR SOFTWARE WERE EXPORTED FROM THE UNITED STATES IN ACCORDANCE WITH THE EXPORT ADMINISTRATION REGULATIONS. DIVISION CONTRARY TO U.S. LAW PROHIBITED.

| | | | | | |
|---|--|---|--|--|--|
| UNLESS OTHERWISE SPECIFIED, LEADING DIMENSIONS ARE IN INCHES. DIMENSIONS IN [] ARE MILLIMETERS. | | PE PASTERNAK an INFINITE brand | | INTERPRET ALL DIMENSIONS AND TOLERANCES PER ASME Y14.5 | |
| TOLERANCES: | | Website: www.Pasternack.com | | SCALE: NONE | |
| X = ±.2 [5] | | Phone: 1.866.727.8376 1.949.261.1920 | | SHEET 1 OF 1 | |
| .XX = ±.02 [0.5] | | DESCRIPTION | | FIBER OPTIC PATCH CABLE, DUAL LC UPC TO SC UPC, MM OM1, 2.0mm PLENUM, ORANGE | |
| .XXX = ±.005 [0.13] | | CABLE LENGTH TOLERANCES: | | SIZE A | |
| ANGLES ± 1° | | >12 [305] ≤ 60 [1524] = ±1 [25] / -0 | | CAGE CODE 53919 | |
| | | >60 [1524] ≤ 120 [3048] = ±4 [102] / -0 | | DRAWN BY DMAY | |
| | | >120 [3048] ≤ 300 [7620] = ±5% / -0 | | ITEM NO. PE3FCA049 | |
| ALL DIMENSIONS ARE FOR REFERENCE ONLY. UNLESS OTHERWISE SPECIFIED, DIMENSIONS MAY VARY IN SIZE AND LOCATION. COLORS MAY VARY. | | REV A | | 1 | |