

Fiber Optic Patch Cable, Duplex LC UPC to LC UPC, MM OM3, 2.0mm Plenum , Aqua - 1 meter



PE3FCA055-1M

Features

- OM3 multimode fiber optic cable assembly
- Duplex LC/UPC to Duplex LC/UPC
- 2.0mm x 4.1mm Plenum rated cable for indoor applications
- Custom lengths available with the same fast delivery.

Applications

- Telecom & Networking
- Data Centers
- Enterprise and Corporate Networks
- Broadcasting & Media Production
- Military & Defense
- Healthcare & Medical Imaging
- Transportation & Rail
- Oil & Gas

Description

The PE3FCA055 fiber optic patch cord is a high-performance OM3 fiber optic cable assembly designed for efficient data transmission across a range of demanding environments. Equipped with duplex LC/UPC to duplex LC/UPC connectors, this duplex OM3 multimode fiber optic patch cable is engineered for indoor applications, featuring a Plenum rating that meets fire and safety standards. Its 2.0mm x 4.1mm zipcord and aqua color make it easy to manage within complex network infrastructures. With an operating temperature range of 0 to +60°C and storage temperature of -40° to +70°C, this fiber optic jumper is built to perform reliably across diverse conditions.

As an OM3 fiber optic jumper, the PE3FCA055 is optimized for high-speed, high-bandwidth data transfer, supporting faster, longer-distance connectivity compared to OM1 fiber. This makes it ideal for applications such as Telecom & Networking, Data Centers, and Enterprise and Corporate Networks where extended reach and performance are critical. Custom lengths are available, allowing the fiber patch cable to be tailored to unique installation needs without affecting delivery times or quality.

In addition to networking, the PE3FCA055 OM3 fiber patch cord is well-suited for industries such as Broadcasting & Media Production, Military & Defense, and Healthcare & Medical Imaging. This fiber assembly offers an adaptable and durable solution for any application requiring dependable, high-speed data transmission in indoor environments."

Configuration

| | |
|---------------------|------------------|
| Function | Patch |
| Cable Type | Duplex Multimode |
| Mode | Multimode |
| Mode Class | OM3 |
| Fiber Diameter | 50/125 um |
| Connection 1 Type | LC |
| Connection 1 Polish | UPC |
| Connection 2 Type | LC |
| Connection 2 Polish | UPC |
| Cable Color | Aqua Blue |

Optical Specifications

| Description | Minimum | Typical | Maximum | Units |
|----------------|---------|---------|---------|-------|
| Return Loss | 30 | | | dB |
| Insertion Loss | | | 0.3 | dB |

Mechanical Specifications

| | |
|-----------------------|----------------|
| Cable Assembly | |
| Length | 1 m [39.37 in] |

Fiber Optic Patch Cable, Duplex LC UPC to LC UPC, MM OM3, 2.0mm Plenum , Aqua - 1 meter



PE3FCA055-1M

Width/Diameter 2 mm
Weight 294.84 g [0.65 lbs]

Cable

Cable Type Patch
Static Bend Radius 15 mm
Dynamic Bend Radius 30 mm
Max Crush Resistance, Short Term (N/100mm) 300
Max Crush Resistance, Long Term (N/100mm) 100

Connectors

| Description | Connector 1 | Connector 2 |
|------------------|-------------|-------------|
| Type | LC | LC |
| Connector Polish | UPC | UPC |

Environmental Specifications

Operating Range Temperature 0 to +60 deg C
Storage Range Temperature -40 to +70 deg C
Ingress Protection (IP) Rating Non-Rated

Compliance Certifications (see [product page](#) for current document)

Plotted and Other Data

Notes:

Fiber Optic Patch Cable, Duplex LC UPC to LC UPC, MM OM3, 2.0mm Plenum , Aqua - 1 meter



PE3FCA055-1M

Typical Performance Data

How to Order

Part Number Configuration:

PE3FCA055

- xx

uu

Unit of Measure:

M = Meters

<blank> = Inches

Length

Base Number

Example: PE3FCA055-12 = 12 inches long cable
PE3FCA055-100cm = 100 cm long cable

Fiber Optic Patch Cable, Duplex LC UPC to LC UPC, MM OM3, 2.0mm Plenum , Aqua - 1 meter from Pasternack Enterprises has same day shipment for domestic and International orders. Our RF, microwave and millimeter wave products maintain a 99.4% availability and are part of the broadest selection in the industry.

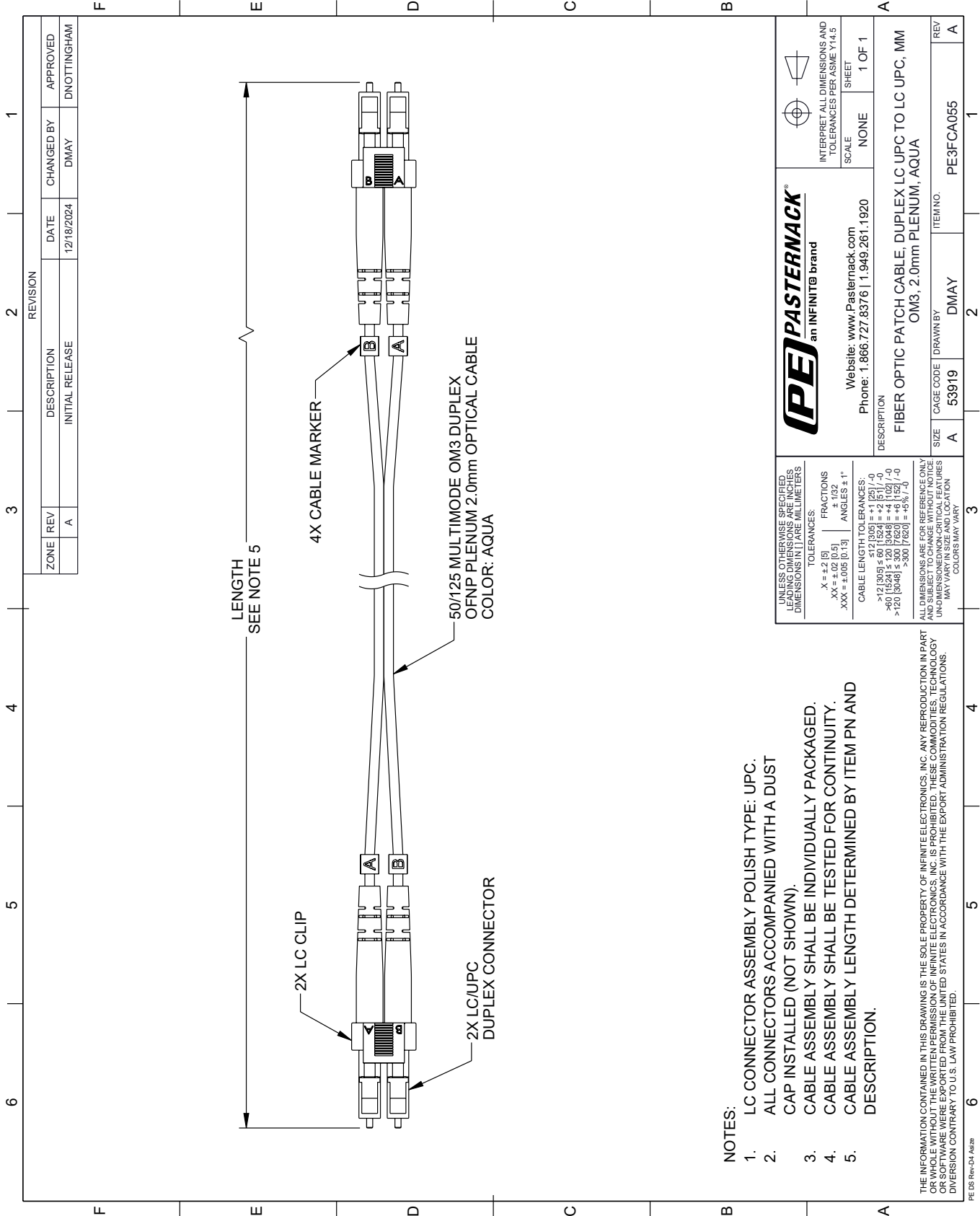
Click the following link (or enter part number in "SEARCH" on website) to obtain additional part information including price, inventory and certifications: [Fiber Optic Patch Cable, Duplex LC UPC to LC UPC, MM OM3, 2.0mm Plenum , Aqua - 1 meter PE3FCA055-1M](#)

URL: <https://www.pasternack.com/lc-lc-multimode-fiber-optic-cable-assembly-pe3fca055-1m-p.aspx>

The information contained within this document is accurate to the best of our knowledge and representative of the part described herein. It may be necessary to make modifications to the part and/or the documentation of the part in order to implement improvements. Pasternack Enterprises reserves the right to make such changes as required. Unless otherwise stated, all specifications are nominal. Pasternack Enterprises does not make any representation or warranty regarding the suitability of the part described herein for any particular purpose, and Pasternack Enterprises does not assume liability arising out of the use of any part or document.

PE3FCA055-1M CAD Drawing

Fiber Optic Patch Cable, Duplex LC UPC to LC UPC, MM OM3, 2.0mm Plenum , Aqua - 1 meter



| REVISION | | DATE | CHANGED BY | APPROVED | |
|----------|-----|-----------------|------------|------------|-------------|
| ZONE | REV | DESCRIPTION | DATE | CHANGED BY | APPROVED |
| | A | INITIAL RELEASE | 12/18/2024 | DMAY | DNOTTINGHAM |

PE PASTERNAK
an INFINITE brand

Website: www.Pasternack.com
Phone: 1.866.727.8376 | 1.949.261.1920

INTERPRET ALL DIMENSIONS AND TOLERANCES PER ASME Y14.5

SCALE: NONE
SHEET: 1 OF 1

DESCRIPTION: FIBER OPTIC PATCH CABLE; DUPLEX LC UPC TO LC UPC, MM OM3, 2.0mm PLENUM, AQUA

| | | | | | |
|------|---|-----------|------|----------|-----------|
| SIZE | A | CAGE CODE | DMAY | ITEM NO. | PE3FCA055 |
| REV | A | | | | |

UNLESS OTHERWISE SPECIFIED, LEADING DIMENSIONS ARE IN INCHES. DIMENSIONS IN [] ARE MILLIMETERS.

TOLERANCES:
 .X = ±.2 [5]
 .XX = ±.02 [0.5]
 .XXX = ±.005 [0.13]

FRACTIONS ± 1/32
 ANGLES ± 1°

CABLE LENGTH TOLERANCES:
 >12 [305] ≤ 60 [1524] = ±.1 [2.5] / -0
 >60 [1524] ≤ 120 [3048] = ±.4 [102] / -0
 >120 [3048] ≤ 300 [7620] = ±.6 [15.2] / -0
 >300 [7620] = ±.6 [15.2] / -0

ALL DIMENSIONS ARE FOR REFERENCE ONLY. UNLESS OTHERWISE SPECIFIED, DIMENSIONS MAY VARY IN SIZE AND LOCATION. COLORS MAY VARY.

THE INFORMATION CONTAINED IN THIS DRAWING IS THE SOLE PROPERTY OF INFINITE ELECTRONICS, INC. ANY REPRODUCTION IN PART OR WHOLE WITHOUT THE WRITTEN PERMISSION OF INFINITE ELECTRONICS, INC. IS PROHIBITED. THESE COMMODITIES, TECHNOLOGY OR SERVICE ARE EXPORTED FROM THE UNITED STATES IN ACCORDANCE WITH THE EXPORT ADMINISTRATION REGULATIONS. DIVERSION CONTRARY TO U.S. LAW PROHIBITED.

PE DS Rev-04 Add2

- NOTES:
1. LC CONNECTOR ASSEMBLY POLISH TYPE: UPC.
 2. ALL CONNECTORS ACCOMPANIED WITH A DUST CAP INSTALLED (NOT SHOWN).
 3. CABLE ASSEMBLY SHALL BE INDIVIDUALLY PACKAGED.
 4. CABLE ASSEMBLY SHALL BE TESTED FOR CONTINUITY.
 5. CABLE ASSEMBLY LENGTH DETERMINED BY ITEM PN AND DESCRIPTION.