

Fiber Optic Patch Cable, Dual LC UPC to ST UPC, MM OM3, 2.0mm LSZH, Aqua



PE3FCA063

Features

- OM3 multimode fiber optic cable assembly
- Dual LC/UPC to dual ST/UPC
- 2.0mm x 4.1mm LSZH (low smoke zero halogen) rated cable for indoor applications
- Custom lengths available with the same fast delivery.

Applications

- Telecom & Networking
- Data Centers
- Enterprise and Corporate Networks
- Broadcasting & Media Production
- Military & Defense
- Healthcare & Medical Imaging
- Transportation & Rail
- Oil & Gas

Description

The PE3FCA063 fiber optic patch cord is a high-performance OM3 fiber optic cable assembly designed for efficient data transmission across a range of demanding environments. Equipped with dual LC/UPC to dual ST/UPC connectors, this duplex OM3 multimode fiber optic patch cable is engineered for indoor applications, featuring a LSZH (low smoke zero halogen) rating that meets fire and safety standards. Its 2.0mm x 4.1mm zipcord and aqua color make it easy to manage within complex network infrastructures. With an operating temperature range of -20° to +70°C and storage temperature of -40° to +70°C, this fiber optic jumper is built to perform reliably across diverse conditions.

As an OM3 fiber optic jumper, the PE3FCA063 is optimized for high-speed, high-bandwidth data transfer, supporting faster, longer-distance connectivity compared to OM1 fiber. This makes it ideal for applications such as Telecom & Networking, Data Centers, and Enterprise and Corporate Networks where extended reach and performance are critical. Custom lengths are available, allowing the fiber patch cable to be tailored to unique installation needs without affecting delivery times or quality.

In addition to networking, the PE3FCA063 OM3 fiber patch cord is well-suited for industries such as Broadcasting & Media Production, Military & Defense, and Healthcare & Medical Imaging. This fiber assembly offers an adaptable and durable solution for any application requiring dependable, high-speed data transmission in indoor environments.

Configuration

Function	Patch
Cable Type	Duplex Multimode
Mode	Multimode
Mode Class	OM3
Fiber Diameter	50/125 um
Connection 1 Type	LC
Connection 1 Polish	UPC
Connection 2 Type	ST
Connection 2 Polish	UPC
Cable Color	Aqua Blue

Optical Specifications

Description	Minimum	Typical	Maximum	Units
Return Loss	30			dB

Fiber Optic Patch Cable, Dual LC UPC to ST
UPC, MM OM3, 2.0mm LSZH, Aqua



PE3FCA063

Optical Specifications

Description	Minimum	Typical	Maximum	Units
Insertion Loss			0.3	dB

Mechanical Specifications

Cable Assembly

Width/Diameter	2 mm
Weight	294.84 g [0.65 lbs]

Cable

Cable Type	Patch
Static Bend Radius	15 mm
Dynamic Bend Radius	30 mm
Max Crush Resistance, Short Term (N/100mm)	300
Max Crush Resistance, Long Term (N/100mm)	100

Connectors

Description	Connector 1	Connector 2
Type	LC	ST
Connector Polish	UPC	UPC

Environmental Specifications

Operating Range Temperature	-20 to +70 deg C
Storage Range Temperature	-40 to +70 deg C
Ingress Protection (IP) Rating	Non-Rated

Compliance Certifications (see [product page](#) for current document)

Plotted and Other Data

Notes:

Fiber Optic Patch Cable, Dual LC UPC to ST
UPC, MM OM3, 2.0mm LSZH, Aqua



PE3FCA063

Typical Performance Data

How to Order

Part Number Configuration:

PE3FCA063

- xx

uu

Unit of Measure:

M = Meters

<blank> = Inches

Length

Base Number

Example: PE3FCA063-12 = 12 inches long cable
PE3FCA063-100cm = 100 cm long cable

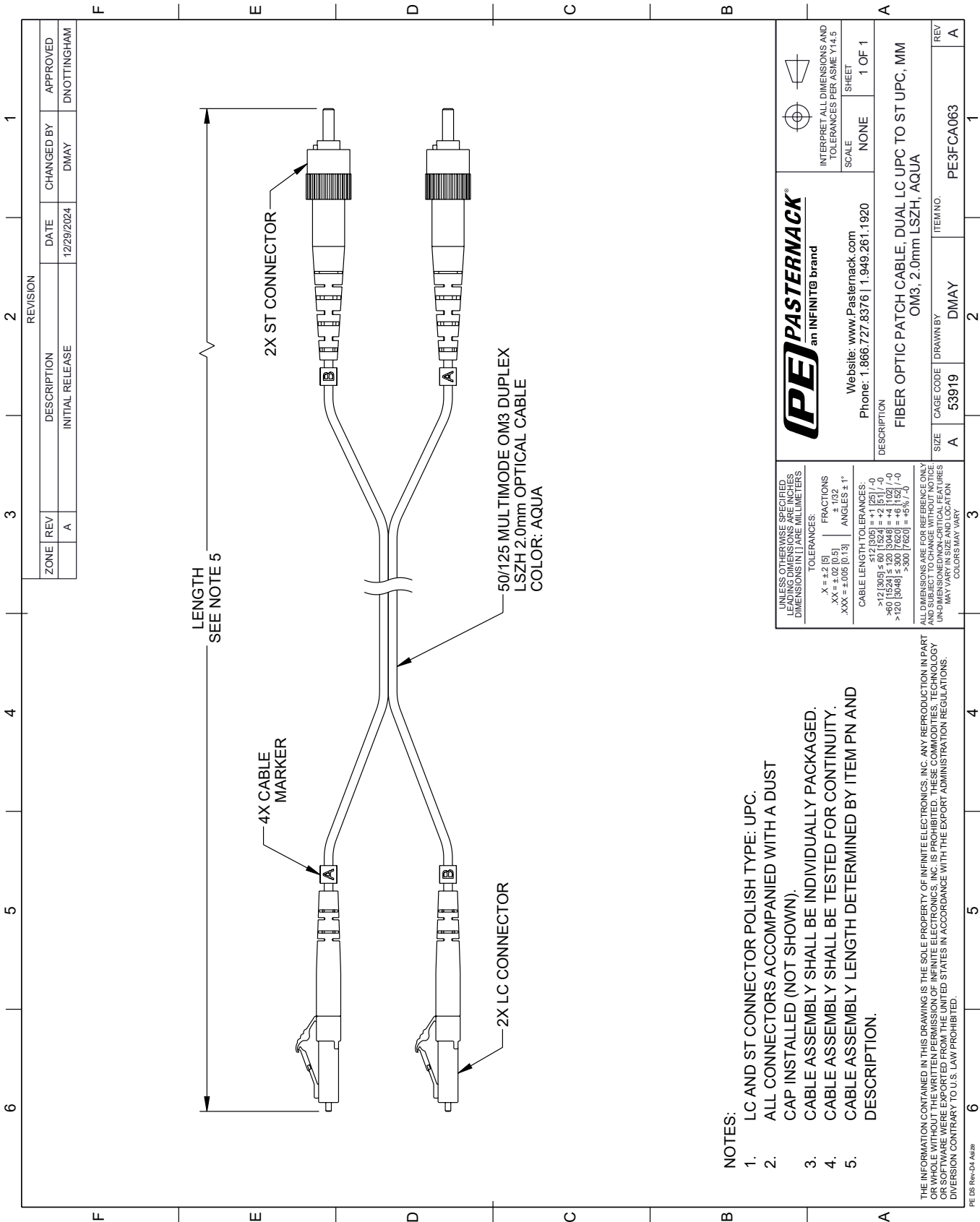
Fiber Optic Patch Cable, Dual LC UPC to ST UPC, MM OM3, 2.0mm LSZH, Aqua from Pasternack Enterprises has same day shipment for domestic and International orders. Our RF, microwave and millimeter wave products maintain a 99.4% availability and are part of the broadest selection in the industry.

Click the following link (or enter part number in "SEARCH" on website) to obtain additional part information including price, inventory and certifications: [Fiber Optic Patch Cable, Dual LC UPC to ST UPC, MM OM3, 2.0mm LSZH, Aqua PE3FCA063](#)

URL: <https://www.pasternack.com/lc-st-multimode-fiber-optic-cable-assembly-pe3fca063-p.aspx>

The information contained within this document is accurate to the best of our knowledge and representative of the part described herein. It may be necessary to make modifications to the part and/or the documentation of the part in order to implement improvements. Pasternack Enterprises reserves the right to make such changes as required. Unless otherwise stated, all specifications are nominal. Pasternack Enterprises does not make any representation or warranty regarding the suitability of the part described herein for any particular purpose, and Pasternack Enterprises does not assume liability arising out of the use of any part or document.

PE3FCA063 CAD Drawing
Fiber Optic Patch Cable, Dual LC UPC to ST UPC, MM OM3, 2.0mm LSZH, Aqua



- NOTES:
- 1. LC AND ST CONNECTOR POLISH TYPE: UPC.
 - 2. ALL CONNECTORS ACCOMPANIED WITH A DUST CAP INSTALLED (NOT SHOWN).
 - 3. CABLE ASSEMBLY SHALL BE INDIVIDUALLY PACKAGED.
 - 4. CABLE ASSEMBLY SHALL BE TESTED FOR CONTINUITY.
 - 5. CABLE ASSEMBLY LENGTH DETERMINED BY ITEM PN AND DESCRIPTION.

THE INFORMATION CONTAINED IN THIS DRAWING IS THE SOLE PROPERTY OF INFINITE ELECTRONICS, INC. ANY REPRODUCTION IN PART OR WHOLE WITHOUT THE WRITTEN PERMISSION OF INFINITE ELECTRONICS, INC. IS PROHIBITED. THESE COMMODITIES, TECHNOLOGY OR SOFTWARE WERE EXPORTED FROM THE UNITED STATES IN ACCORDANCE WITH THE EXPORT ADMINISTRATION REGULATIONS. DIVISION CONTRARY TO U.S. LAW PROHIBITED.

PE D8 Rev-D4 Aqua