

Fiber Optic Patch Cable, Dual LC UPC to SC UPC,
MM OM4, 2.0mm Riser, Aqua - 10 meter



PE3FCA068-10M

Features

- OM4 multimode fiber optic cable assembly
- Dual LC/UPC to Dual SC/UPC
- 2.0mm x 4.1mm Plenum rated cable for indoor applications
- Custom lengths available with the same fast delivery.

Applications

- Telecom & Networking
- Data Centers
- Enterprise and Corporate Networks
- Broadcasting & Media Production
- Military & Defense
- Healthcare & Medical Imaging
- Transportation & Rail
- Oil & Gas

Description

The PE3FCA068-10M fiber optic patch cord from Pasternack is a high-performance OM4 fiber optic cable assembly, tailored for superior data transmission in high-demand environments. Equipped with Dual LC/UPC to Dual SC/UPC connectors, this OM4 duplex fiber optic patch cable is optimized for indoor use and comes with a Riser rating that adheres to fire and safety requirements. With a 2.0mm x 4.1mm diameter and aqua color, this fiber optic jumper is easily identifiable in complex network setups. Its operating temperature range of -20C° to 70°C and storage temperature of -40°C to 70°C ensures reliable operation across a variety of environmental conditions.

As an OM4 fiber optic cable assembly, the Pasternack PE3FCA068-10M is designed for ultra-high-speed, high-bandwidth data transmission, supporting greater distances and faster speeds than OM1 and OM3 fiber. This makes it ideal for Telecom & Networking, Data Centers, and Enterprise and Corporate Networks, where extended reach and top-tier fiber performance is crucial. Custom lengths are available to meet specific installation needs, providing flexibility for various setups while maintaining quick delivery and consistent quality.

Beyond standard networking, Pasternack's PE3FCA068-10M OM4 fiber patch cord supports specialized applications in industries like Broadcasting & Media Production, Military & Defense, and Healthcare & Medical Imaging. This fiber assembly delivers a versatile and durable solution for any setup requiring robust, high-speed data transmission in controlled indoor environments. For further information on similar fiber optic products, our expert technical support and trained sales team can get you the ideal fiber optic duplex cable assembly as per your requirements.

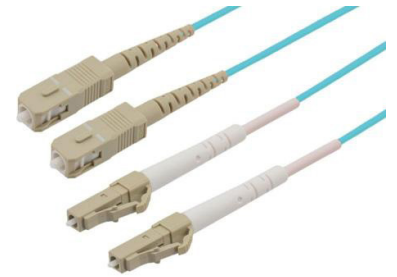
Configuration

Function	Patch
Cable Type	Duplex Multimode
Mode	Multimode
Mode Class	OM4
Fiber Diameter	50/125 um
Connection 1 Type	LC
Connection 1 Polish	UPC
Connection 2 Type	SC
Connection 2 Polish	UPC
Cable Color	Aqua Blue

Optical Specifications

Description	Minimum	Typical	Maximum	Units
Return Loss	30			dB

Fiber Optic Patch Cable, Dual LC UPC to SC UPC,
MM OM4, 2.0mm Riser, Aqua - 10 meter



PE3FCA068-10M

Optical Specifications

Description	Minimum	Typical	Maximum	Units
Insertion Loss			0.3	dB

Mechanical Specifications

Cable Assembly

Length	10 m [393.70 in]
Width/Diameter	2 mm
Weight	1.52 kg [3.35 lbs]

Cable

Cable Type	Patch
Static Bend Radius	15 mm
Dynamic Bend Radius	30 mm
Max Crush Resistance, Short Term (N/100mm)	300
Max Crush Resistance, Long Term (N/100mm)	100

Connectors

Description	Connector 1	Connector 2
Type	LC	SC
Connector Polish	UPC	UPC

Environmental Specifications

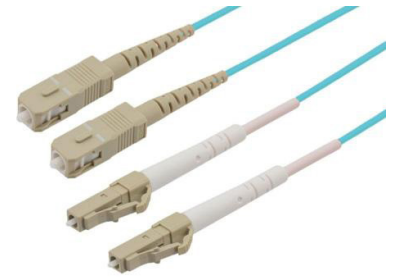
Operating Range Temperature	-20 to +70 deg C
Storage Range Temperature	-40 to +70 deg C
Ingress Protection (IP) Rating	Non-Rated

Compliance Certifications (see [product page](#) for current document)

Plotted and Other Data

Notes:

Fiber Optic Patch Cable, Dual LC UPC to SC UPC,
MM OM4, 2.0mm Riser, Aqua - 10 meter



PE3FCA068-10M

Typical Performance Data

How to Order

Part Number Configuration:

PE3FCA068

- **xx**

uu

Unit of Measure:

M = Meters

<blank> = Inches

Length

Base Number

Example: PE3FCA068-12 = 12 inches long cable
PE3FCA068-100cm = 100 cm long cable

Fiber Optic Patch Cable, Dual LC UPC to SC UPC, MM OM4, 2.0mm Riser, Aqua - 10 meter from Pasternack Enterprises has same day shipment for domestic and International orders. Our RF, microwave and millimeter wave products maintain a 99.4% availability and are part of the broadest selection in the industry.

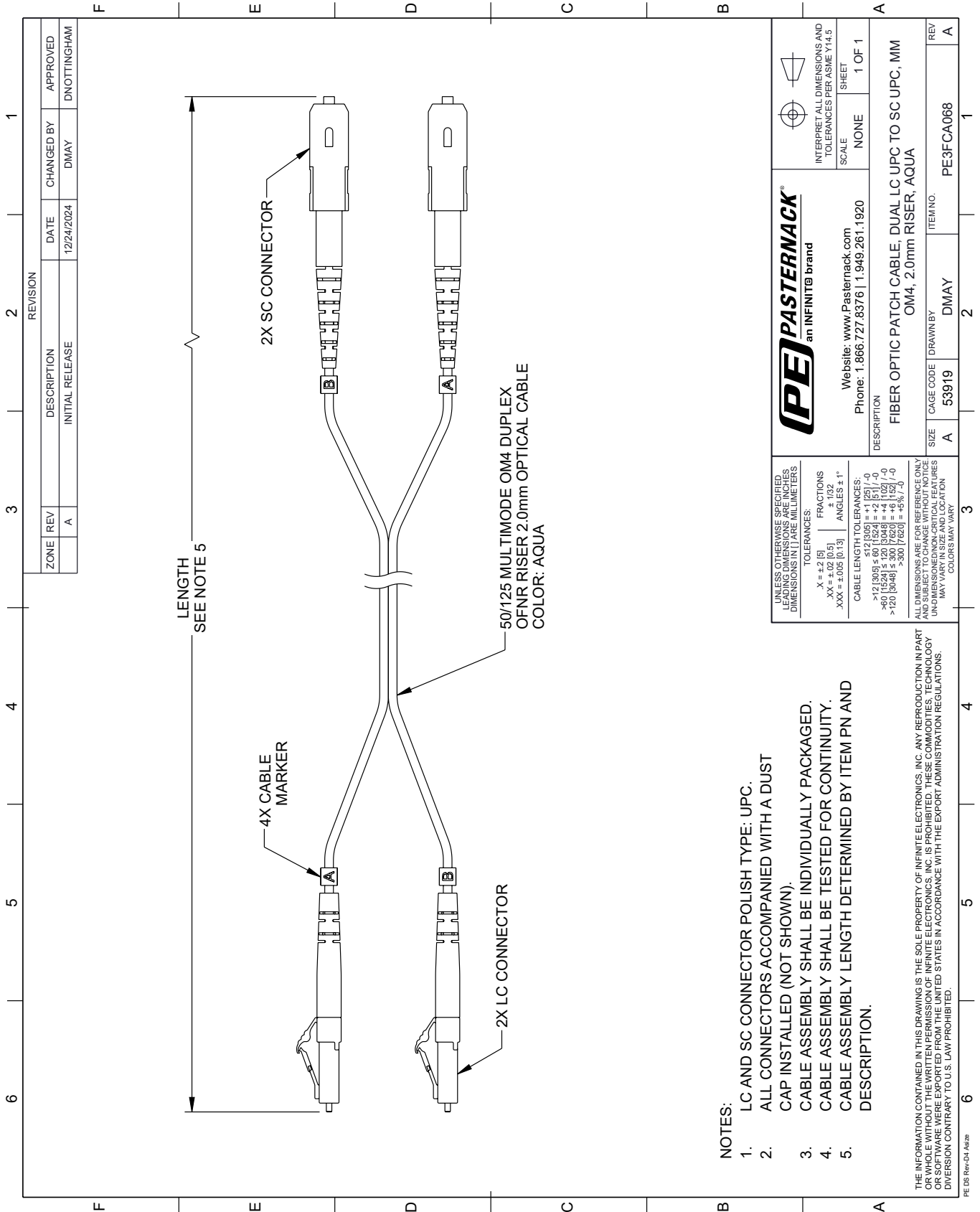
Click the following link (or enter part number in "SEARCH" on website) to obtain additional part information including price, inventory and certifications: [Fiber Optic Patch Cable, Dual LC UPC to SC UPC, MM OM4, 2.0mm Riser, Aqua - 10 meter PE3FCA068-10M](#)

URL: <https://www.pasternack.com/lc-sc-multimode-fiber-optic-cable-assembly-pe3fca068-10m-p.aspx>

The information contained within this document is accurate to the best of our knowledge and representative of the part described herein. It may be necessary to make modifications to the part and/or the documentation of the part in order to implement improvements. Pasternack Enterprises reserves the right to make such changes as required. Unless otherwise stated, all specifications are nominal. Pasternack Enterprises does not make any representation or warranty regarding the suitability of the part described herein for any particular purpose, and Pasternack Enterprises does not assume liability arising out of the use of any part or document.

PE3FCA068-10M CAD Drawing

Fiber Optic Patch Cable, Dual LC UPC to SC UPC, MM OM4, 2.0mm Riser, Aqua - 10 meter



REVISION		DATE	CHANGED BY	APPROVED	
ZONE	REV	DESCRIPTION	DATE	CHANGED BY	APPROVED
	A	INITIAL RELEASE	12/24/2024	DMAY	DNOTTINGHAM

PE PASTERNAK
an INFINITE brand

Website: www.Pasternack.com
Phone: 1.866.727.8376 | 1.949.261.1920

INTERPRET ALL DIMENSIONS AND TOLERANCES PER ASME Y14.5
SCALE: NONE
SHEET: 1 OF 1

DESCRIPTION: FIBER OPTIC PATCH CABLE, DUAL LC UPC TO SC UPC, MM OM4, 2.0mm RISER, AQUA

SIZE	CAGE CODE	DRAWN BY	ITEM NO.
A	53919	DMAY	PE3FCA068

REV: A

UNLESS OTHERWISE SPECIFIED, LEADING DIMENSIONS ARE IN INCHES. DIMENSIONS IN [] ARE MILLIMETERS.

TOLERANCES:
 .X = ±.2 [5]
 .XX = ±.02 [0.5]
 .XXX = ±.005 [0.13]

FRACTIONS:
 ± 1/32
 ANGLES ± 1°

CABLE LENGTH TOLERANCES:
 >12 [305] ≤ 60 [1524] = ±.1 [2.5] / -0
 >60 [1524] ≤ 120 [3048] = ±.4 [102] / -0
 >120 [3048] ≤ 300 [7620] = ±.6 [15.2] / -0
 >300 [7620] = ±.8 [20.3] / -0

ALL DIMENSIONS ARE FOR REFERENCE ONLY. UNDIMENSIONED NON-CRITICAL FEATURES MAY VARY IN SIZE AND LOCATION. COLORS MAY VARY.

- NOTES:
1. LC AND SC CONNECTOR POLISH TYPE: UPC.
 2. ALL CONNECTORS ACCOMPANIED WITH A DUST CAP INSTALLED (NOT SHOWN).
 3. CABLE ASSEMBLY SHALL BE INDIVIDUALLY PACKAGED.
 4. CABLE ASSEMBLY SHALL BE TESTED FOR CONTINUITY.
 5. CABLE ASSEMBLY LENGTH DETERMINED BY ITEM PN AND DESCRIPTION.

THE INFORMATION CONTAINED IN THIS DRAWING IS THE SOLE PROPERTY OF INFINITE ELECTRONICS, INC. ANY REPRODUCTION IN PART OR WHOLE WITHOUT THE WRITTEN PERMISSION OF INFINITE ELECTRONICS, INC. IS PROHIBITED. THESE COMMODITIES, TECHNOLOGY OR SERVICE ARE BEING EXPORTED FROM THE UNITED STATES IN ACCORDANCE WITH THE EXPORT ADMINISTRATION REGULATIONS. DIVISION CONTRARY TO U.S. LAW PROHIBITED.

PE DS Rev-D4 Add2