

Fiber Optic Patch Cable, Duplex LC UPC to LC UPC, SM OS2, 2.0mm Riser, Yellow - 1 meter



PE3FCA075-1M

Features

- OS2 Single Mode G657A1 fiber optic cable assembly
- Duplex LC/UPC to Duplex LC/UPC
- 2.0mm x 4.1mm Riser rated cable for indoor applications
- Custom lengths available with the same fast delivery.

Applications

- Telecom & Networking
- Data Centers
- Enterprise and Corporate Networks
- Broadcasting & Media Production
- Military & Defense
- Healthcare & Medical Imaging
- Transportation & Rail
- Oil & Gas

Description

The PE3FCA075-1M fiber optic patch cord from Pasternack is a robust and versatile fiber optic cable assembly designed for high-performance data transmission in various environments. Equipped with Duplex LC/UPC to Duplex LC/UPC connectors, this duplex OS2 Single Mode fiber optic patch cable is optimized for indoor use, featuring a Riser rating that ensures compliance with fire and safety standards. The 2.0mm x 4.1mm diameter construction, combined with its yellow color, makes it easy to identify in complex setups, while its operating temperature range of -20°C to 70°C and storage temperature of -40°C to 70°C provides reliable performance across diverse conditions.

Pasternack's PE3FCA075-1M fiber optic jumper is ideal for applications where reliable, long-range data connectivity is critical. The single mode design of the OS2 fiber offers stable, high-speed transmission over long distances, making it suitable for Telecom & Networking, Data Centers, and Corporate Networks. With the flexibility of custom lengths, the PE3FCA075-1M fiber optic assembly can be tailored to meet specific installation requirements, ensuring efficient network management in high-density setups without compromising on delivery time or quality.

Beyond networking, the Pasternack PE3FCA075-1M fiber patch cord supports an array of industry applications, from Broadcasting & Media Production and Military & Defense to Healthcare & Medical Imaging. This fiber assembly offers a reliable and durable solution for any setting requiring high-quality data transmission in a controlled, indoor environment. For further information on similar fiber optic products, our expert technical support and trained sales team can get you the ideal fiber optic duplex cable assembly as per your requirements.

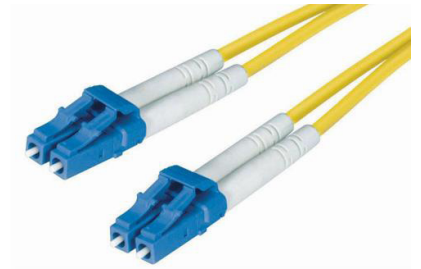
Configuration

| | |
|---------------------|--------------------|
| Function | Patch |
| Cable Type | Duplex Single Mode |
| Mode | Single Mode |
| Mode Class | OS2 |
| Fiber Diameter | 9/125 um |
| Connection 1 Type | LC |
| Connection 1 Polish | UPC |
| Connection 2 Type | LC |
| Connection 2 Polish | UPC |
| Cable Color | Yellow |

Optical Specifications

| Description | Minimum | Typical | Maximum | Units |
|-------------|---------|---------|---------|-------|
| Return Loss | 50 | | | dB |

Fiber Optic Patch Cable, Duplex LC UPC to LC UPC, SM OS2, 2.0mm Riser, Yellow - 1 meter



PE3FCA075-1M

Optical Specifications

| Description | Minimum | Typical | Maximum | Units |
|----------------|---------|---------|---------|-------|
| Insertion Loss | | | 0.3 | dB |

Mechanical Specifications

Cable Assembly

| | |
|----------------|---------------------|
| Length | 1 m [39.37 in] |
| Width/Diameter | 2 mm |
| Weight | 294.84 g [0.65 lbs] |

Cable

| | |
|--|-------|
| Cable Type | Patch |
| Static Bend Radius | 15 mm |
| Dynamic Bend Radius | 30 mm |
| Max Crush Resistance, Short Term (N/100mm) | 300 |
| Max Crush Resistance, Long Term (N/100mm) | 100 |

Connectors

| Description | Connector 1 | Connector 2 |
|------------------|-------------|-------------|
| Type | LC | LC |
| Connector Polish | UPC | UPC |

Environmental Specifications

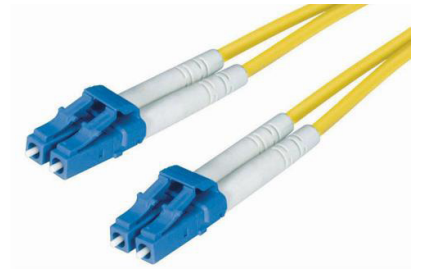
| | |
|--------------------------------|------------------|
| Operating Range Temperature | -20 to +70 deg C |
| Storage Range Temperature | -40 to +70 deg C |
| Ingress Protection (IP) Rating | Non-Rated |

Compliance Certifications (see [product page](#) for current document)

Plotted and Other Data

Notes:

Fiber Optic Patch Cable, Duplex LC UPC to LC UPC, SM OS2, 2.0mm Riser, Yellow - 1 meter



PE3FCA075-1M

Typical Performance Data

How to Order

Part Number Configuration:

PE3FCA075

- xx

uu

Unit of Measure:

M = Meters

<blank> = Inches

Length

Base Number

Example: PE3FCA075-12 = 12 inches long cable
PE3FCA075-100cm = 100 cm long cable

Fiber Optic Patch Cable, Duplex LC UPC to LC UPC, SM OS2, 2.0mm Riser, Yellow - 1 meter from Pasternack Enterprises has same day shipment for domestic and International orders. Our RF, microwave and millimeter wave products maintain a 99.4% availability and are part of the broadest selection in the industry.

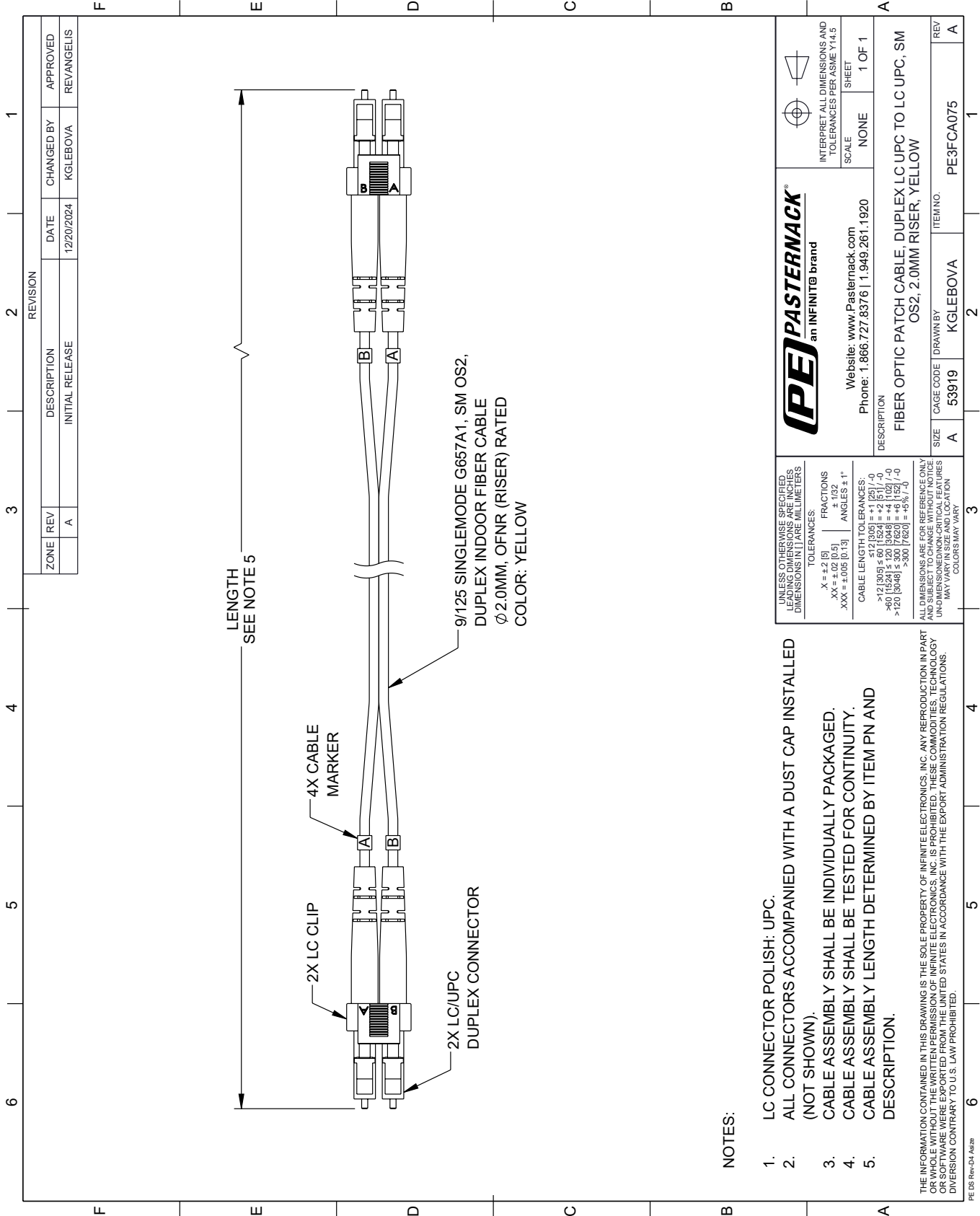
Click the following link (or enter part number in "SEARCH" on website) to obtain additional part information including price, inventory and certifications: [Fiber Optic Patch Cable, Duplex LC UPC to LC UPC, SM OS2, 2.0mm Riser, Yellow - 1 meter PE3FCA075-1M](#)

URL: <https://www.pasternack.com/lc-lc-single-mode-fiber-optic-cable-assembly-pe3fca075-1m-p.aspx>

The information contained within this document is accurate to the best of our knowledge and representative of the part described herein. It may be necessary to make modifications to the part and/or the documentation of the part in order to implement improvements. Pasternack Enterprises reserves the right to make such changes as required. Unless otherwise stated, all specifications are nominal. Pasternack Enterprises does not make any representation or warranty regarding the suitability of the part described herein for any particular purpose, and Pasternack Enterprises does not assume liability arising out of the use of any part or document.

PE3FCA075-1M CAD Drawing

Fiber Optic Patch Cable, Duplex LC UPC to LC UPC, SM OS2, 2.0mm Riser, Yellow - 1 meter



| REVISION | | DATE | CHANGED BY | APPROVED | |
|----------|-----|-----------------|------------|------------|------------|
| ZONE | REV | DESCRIPTION | DATE | CHANGED BY | APPROVED |
| | A | INITIAL RELEASE | 12/20/2024 | KGLEBOVA | REVANGELIS |

PE PASTERNAK
an INFINITE brand

Website: www.Pasternack.com
Phone: 1.866.727.8376 | 1.949.261.1920

INTERPRET ALL DIMENSIONS AND TOLERANCES PER ASME Y14.5

SCALE: NONE
SHEET: 1 OF 1

UNLESS OTHERWISE SPECIFIED, LEADING DIMENSIONS ARE IN INCHES, DIMENSIONS IN [] ARE MILLIMETERS.

TOLERANCES:
 .X = ±.2 [5]
 .XX = ±.02 [0.5]
 .XXX = ±.005 [0.13]
 FRACTIONS ± 1/32
 ANGLES ± 1°

CABLE LENGTH TOLERANCES:
 >12 [305] ≤ 60 [1524] = ±.1 [25] / -0
 >60 [1524] ≤ 120 [3048] = ±.4 [102] / -0
 >120 [3048] ≤ 300 [7620] = ±.8 [20] / -0

ALL DIMENSIONS ARE FOR REFERENCE ONLY. DIMENSIONS OF UNUSUAL FEATURES MAY VARY IN SIZE AND LOCATION. COLORS MAY VARY.

NOTES:

1. LC CONNECTOR POLISH: UPC.
2. ALL CONNECTORS ACCOMPANIED WITH A DUST CAP INSTALLED (NOT SHOWN).
3. CABLE ASSEMBLY SHALL BE INDIVIDUALLY PACKAGED.
4. CABLE ASSEMBLY SHALL BE TESTED FOR CONTINUITY.
5. CABLE ASSEMBLY LENGTH DETERMINED BY ITEM PN AND DESCRIPTION.

THE INFORMATION CONTAINED IN THIS DRAWING IS THE SOLE PROPERTY OF INFINITE ELECTRONICS, INC. ANY REPRODUCTION IN PART OR WHOLE WITHOUT THE WRITTEN PERMISSION OF INFINITE ELECTRONICS, INC. IS PROHIBITED. THESE COMMODITIES, TECHNOLOGY OR SOFTWARE ARE BEING EXPORTED FROM THE UNITED STATES IN ACCORDANCE WITH THE EXPORT ADMINISTRATION REGULATIONS. DIVERSION CONTRARY TO U.S. LAW PROHIBITED.

PE DS Rev-04 Add2