

Fiber Optic Patch Cable, Duplex LC APC to LC APC, SM OS2, 2.0mm Riser, Yellow - 1 meter



PE3FCA076-1M

Features

- OS2 Single Mode G657A1 fiber optic cable assembly
- Duplex LC/APC to Duplex LC/APC
- 2.0mm x 4.1mm Riser rated cable for indoor applications
- Custom lengths available with the same fast delivery.

Applications

- Telecom & Networking
- Data Centers
- Enterprise and Corporate Networks
- Broadcasting & Media Production
- Military & Defense
- Healthcare & Medical Imaging
- Transportation & Rail
- Oil & Gas

Description

The PE3FCA076-1M fiber optic patch cord from Pasternack is a robust and versatile fiber optic cable assembly designed for high-performance data transmission in various environments. Equipped with Duplex LC/APC to Duplex LC/APC connectors, this duplex OS2 Single Mode fiber optic patch cable is optimized for indoor use, featuring a Riser rating that ensures compliance with fire and safety standards. The 2.0mm x 4.1mm diameter construction, combined with its yellow color, makes it easy to identify in complex setups, while its operating temperature range of -20°C to 70°C and storage temperature of -40°C to 70°C provides reliable performance across diverse conditions.

Pasternack's PE3FCA076-1M fiber optic jumper is ideal for applications where reliable, long-range data connectivity is critical. The single mode design of the OS2 fiber offers stable, high-speed transmission over long distances, making it suitable for Telecom & Networking, Data Centers, and Corporate Networks. With the flexibility of custom lengths, the PE3FCA076-1M fiber optic assembly can be tailored to meet specific installation requirements, ensuring efficient network management in high-density setups without compromising on delivery time or quality.

Beyond networking, the Pasternack PE3FCA076-1M fiber patch cord supports an array of industry applications, from Broadcasting & Media Production and Military & Defense to Healthcare & Medical Imaging. This fiber assembly offers a reliable and durable solution for any setting requiring high-quality data transmission in a controlled, indoor environment. For further information on similar fiber optic products, our expert technical support and trained sales team can get you the ideal fiber optic duplex cable assembly as per your requirements.

Configuration

Function	Patch
Cable Type	Duplex Single Mode
Mode	Single Mode
Mode Class	OS2
Fiber Diameter	9/125 um
Connection 1 Type	LC
Connection 1 Polish	APC
Connection 2 Type	LC
Connection 2 Polish	APC
Cable Color	Yellow

Optical Specifications

Description	Minimum	Typical	Maximum	Units
Return Loss	60			dB

Fiber Optic Patch Cable, Duplex LC APC to LC APC, SM OS2, 2.0mm Riser, Yellow - 1 meter



PE3FCA076-1M

Optical Specifications

Description	Minimum	Typical	Maximum	Units
Insertion Loss			0.3	dB

Mechanical Specifications

Cable Assembly

Length	1 m [39.37 in]
Width/Diameter	2 mm
Weight	294.84 g [0.65 lbs]

Cable

Cable Type	Patch
Static Bend Radius	15 mm
Dynamic Bend Radius	30 mm
Max Crush Resistance, Short Term (N/100mm)	300
Max Crush Resistance, Long Term (N/100mm)	100

Connectors

Description	Connector 1	Connector 2
Type	LC	LC
Connector Polish	APC	APC

Environmental Specifications

Operating Range Temperature	-20 to +70 deg C
Storage Range Temperature	-40 to +70 deg C
Ingress Protection (IP) Rating	Non-Rated

Compliance Certifications (see [product page](#) for current document)

Plotted and Other Data

Notes:

Fiber Optic Patch Cable, Duplex LC APC to LC APC, SM OS2, 2.0mm Riser, Yellow - 1 meter



PE3FCA076-1M

Typical Performance Data

How to Order

Part Number Configuration:

PE3FCA076

- **xx**

uu

Unit of Measure:

M = Meters

<blank> = Inches

Length

Base Number

Example: PE3FCA076-12 = 12 inches long cable
PE3FCA076-100cm = 100 cm long cable

Fiber Optic Patch Cable, Duplex LC APC to LC APC, SM OS2, 2.0mm Riser, Yellow - 1 meter from Pasternack Enterprises has same day shipment for domestic and International orders. Our RF, microwave and millimeter wave products maintain a 99.4% availability and are part of the broadest selection in the industry.

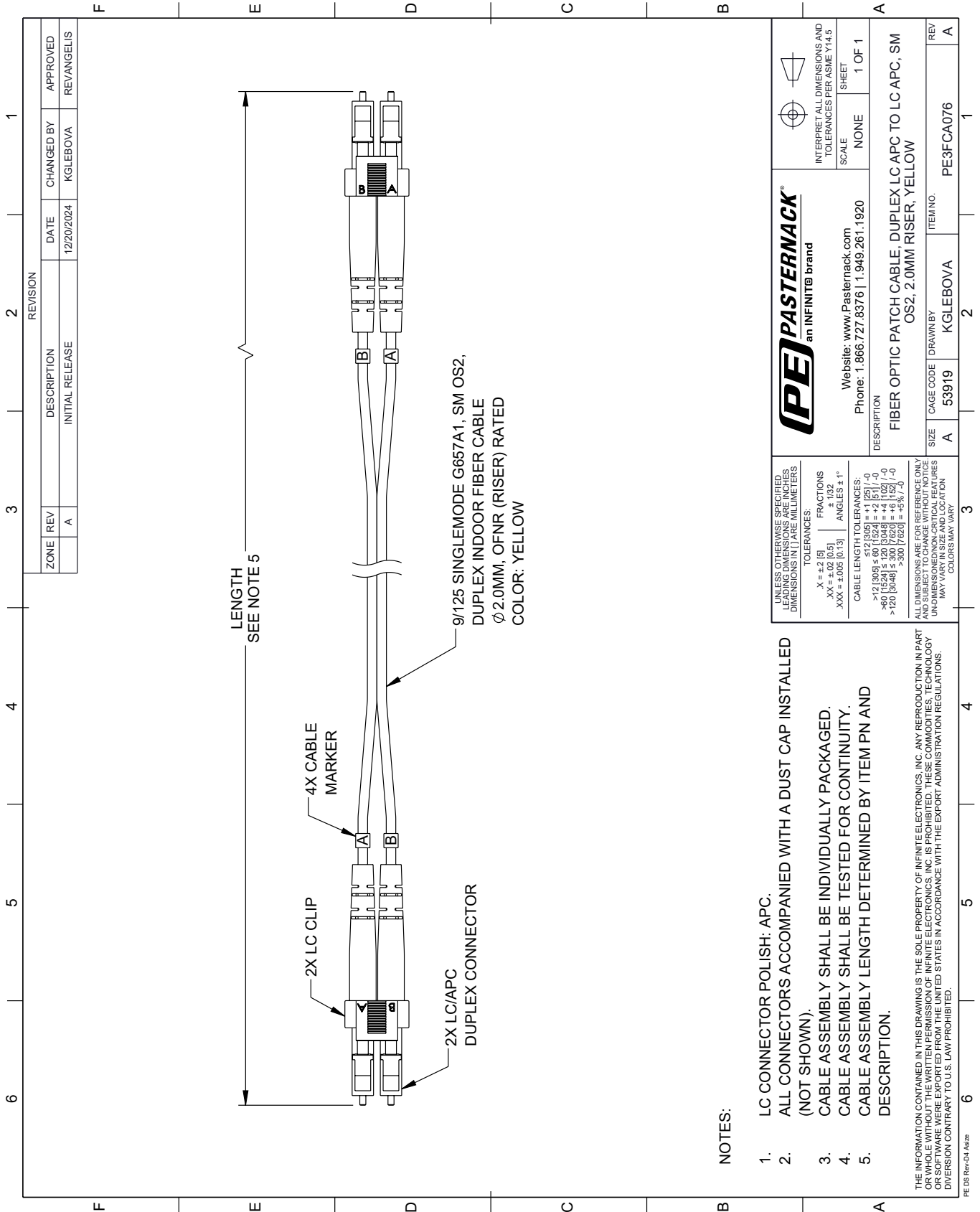
Click the following link (or enter part number in "SEARCH" on website) to obtain additional part information including price, inventory and certifications: [Fiber Optic Patch Cable, Duplex LC APC to LC APC, SM OS2, 2.0mm Riser, Yellow - 1 meter PE3FCA076-1M](#)

URL: <https://www.pasternack.com/lc-lc-single-mode-fiber-optic-cable-assembly-pe3fca076-1m-p.aspx>

The information contained within this document is accurate to the best of our knowledge and representative of the part described herein. It may be necessary to make modifications to the part and/or the documentation of the part in order to implement improvements. Pasternack Enterprises reserves the right to make such changes as required. Unless otherwise stated, all specifications are nominal. Pasternack Enterprises does not make any representation or warranty regarding the suitability of the part described herein for any particular purpose, and Pasternack Enterprises does not assume liability arising out of the use of any part or document.

PE3FCA076-1M CAD Drawing

Fiber Optic Patch Cable, Duplex LC APC to LC APC, SM OS2, 2.0mm Riser, Yellow - 1 meter



REVISION		DATE	CHANGED BY	APPROVED	
ZONE	REV	DESCRIPTION	DATE	CHANGED BY	APPROVED
	A	INITIAL RELEASE	12/20/2024	KGLEBOVA	REVANGELIS

LENGTH
SEE NOTE 5

4X CABLE
MARKER

2X LC CLIP

2X LC/APC
DUPLEX CONNECTOR

9/125 SINGLEMODE G657A1, SM OS2,
DUPLEX INDOOR FIBER CABLE
Ø2.0MM, OFNR (RISER) RATED
COLOR: YELLOW

NOTES:

- LC CONNECTOR POLISH: APC.
- ALL CONNECTORS ACCOMPANIED WITH A DUST CAP INSTALLED (NOT SHOWN).
- CABLE ASSEMBLY SHALL BE INDIVIDUALLY PACKAGED.
- CABLE ASSEMBLY SHALL BE TESTED FOR CONTINUITY.
- CABLE ASSEMBLY LENGTH DETERMINED BY ITEM PN AND DESCRIPTION.

THE INFORMATION CONTAINED IN THIS DRAWING IS THE SOLE PROPERTY OF INFINITE ELECTRONICS, INC. ANY REPRODUCTION IN PART OR WHOLE WITHOUT THE WRITTEN PERMISSION OF INFINITE ELECTRONICS, INC. IS PROHIBITED. THESE COMMODITIES, TECHNOLOGY OR SOFTWARE ARE EXPORTED FROM THE UNITED STATES IN ACCORDANCE WITH THE EXPORT ADMINISTRATION REGULATIONS. DIVERSION CONTRARY TO U.S. LAW PROHIBITED.

<p>PASTERNAK an INFINITE brand</p>		<p>Website: www.Pasternack.com</p> <p>Phone: 1.866.727.8376 1.949.261.1920</p>	<p>INTERPRET ALL DIMENSIONS AND TOLERANCES PER ASME Y14.5</p> <p>SCALE: NONE</p> <p>SHEET: 1 OF 1</p>
<p>UNLESS OTHERWISE SPECIFIED, LEADING DIMENSIONS ARE IN INCHES. DIMENSIONS IN [] ARE MILLIMETERS.</p> <p>TOLERANCES:</p> <p>.X = ±.2 [5] FRACTIONS ±.132</p> <p>.XX = ±.02 [0.5] ANGLES ± 1°</p> <p>.XXX = ±.005 [0.13]</p> <p>CABLE LENGTH TOLERANCES:</p> <p>>12 [305] ≤ 60 [1524] = ±.1 [25] / -0</p> <p>>60 [1524] ≤ 120 [3048] = ±.4 [102] / -0</p> <p>>120 [3048] ≤ 300 [7620] = ±.6 [15] / -0</p>		<p>ALL DIMENSIONS ARE FOR REFERENCE ONLY. UNDIMENSIONED NON-CRITICAL FEATURES MAY VARY IN SIZE AND LOCATION. COLORS MAY VARY.</p>	
<p>DESCRIPTION</p> <p>FIBER OPTIC PATCH CABLE, DUPLEX LC APC TO LC APC, SM OS2, 2.0MM RISER, YELLOW</p>		<p>SIZE: A</p> <p>CAGE CODE: 53919</p> <p>ITEM NO.: PE3FCA076</p>	<p>REV: A</p>