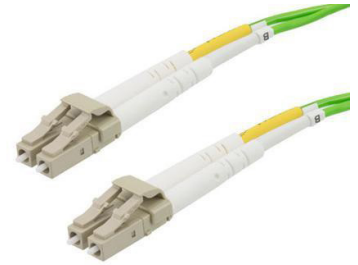


Fiber Optic Patch Cable, Duplex LC UPC to LC UPC, MM OM5, 2.0mm Riser, Lime Green



PE3FCA161

Features

- Multimode OM5 indoor fiber optic cable assembly
- Duplex LC UPC to Duplex LC UPC
- Indoor Riser (OFNR) cable
- Suitable for ceilings and riser areas
- 2.0mm x 4.1mm duplex zip-cord
- Custom lengths available with the same fast delivery

Applications

- Telecom & Networking
- Data Centers
- Enterprise and Corporate Networks
- Broadcasting & Media Production
- Military & Defense
- Healthcare & Medical Imaging
- Transportation & Rail
- Oil & Gas

Description

The PE3FCA161 fiber optic patch cord is a high-performance OM5 fiber optic cable assembly, tailored for superior data transmission in high-demand environments. Equipped with Duplex LC UPC to Duplex LC UPC connectors, this OM5 duplex fiber optic patch cable is optimized for indoor use and comes with a Riser (OFNR) cable that adheres to fire and safety requirements. With a 2.0mm x 4.1mm diameter and lime green color, this fiber optic jumper is easily identifiable in complex network setups. Its operating temperature range of -20°C to 70°C and storage temperature of -40°C to 70°C ensures reliable operation across a variety of environmental conditions.

As an OM5 fiber optic jumper, Pasternack's PE3FCA161 is designed for ultra-high-speed, high-bandwidth data transmission, supporting greater distances and faster speeds than OM3 & OM4 fiber. This makes it ideal for Telecom & Networking, Data Centers, and Enterprise and Corporate Networks, where extended reach and top-tier fiber performance is crucial. Custom lengths are available to meet specific installation needs, providing flexibility for various setups while maintaining quick delivery and consistent quality.

Beyond standard networking, the Pasternack PE3FCA161 OM5 fiber patch cord supports specialized applications in industries like Broadcasting & Media Production, Military & Defense, and Healthcare & Medical Imaging. This fiber assembly delivers a versatile and durable solution for any setup requiring robust, high-speed data transmission in controlled indoor environments. For further information on similar fiber optic products, our expert technical support and trained sales team can get you the ideal fiber optic duplex cable assembly as per your requirements.

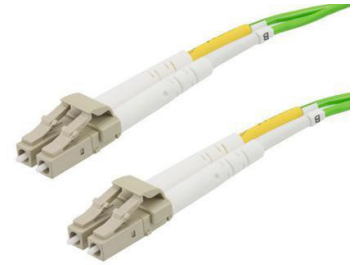
Configuration

| | |
|---------------------|------------------|
| Function | Patch |
| Cable Type | Duplex Multimode |
| Mode | Multimode |
| Mode Class | OM5 |
| Fiber Diameter | 50/125 um |
| Connection 1 Type | LC |
| Connection 1 Polish | UPC |
| Connection 2 Type | LC |
| Connection 2 Polish | UPC |
| Cable Color | Lime Green |

Optical Specifications

| Description | Minimum | Typical | Maximum | Units |
|-------------|---------|---------|---------|-------|
| Return Loss | 30 | | | dB |

Fiber Optic Patch Cable, Duplex LC UPC to LC
UPC, MM OM5, 2.0mm Riser, Lime Green



PE3FCA161

Optical Specifications

| Description | Minimum | Typical | Maximum | Units |
|----------------|---------|---------|---------|-------|
| Insertion Loss | | | 0.3 | dB |

Mechanical Specifications

Cable Assembly

| | |
|----------------|---------------------|
| Length | 0 mm [0.00 in] |
| Width/Diameter | 2 mm |
| Weight | 294.84 g [0.65 lbs] |

Cable

| | |
|--|-------|
| Cable Type | Patch |
| Static Bend Radius | 15 mm |
| Dynamic Bend Radius | 30 mm |
| Max Crush Resistance, Short Term (N/100mm) | 300 |
| Max Crush Resistance, Long Term (N/100mm) | 100 |

Connectors

| Description | Connector 1 | Connector 2 |
|------------------|-------------|-------------|
| Type | LC | LC |
| Connector Polish | UPC | UPC |

Environmental Specifications

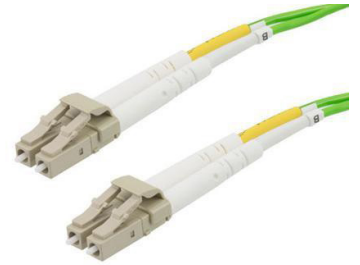
| | |
|--------------------------------|------------------|
| Operating Range Temperature | -20 to +70 deg C |
| Storage Range Temperature | -40 to +70 deg C |
| Ingress Protection (IP) Rating | Non-Rated |

Compliance Certifications (see [product page](#) for current document)

Plotted and Other Data

Notes:

Fiber Optic Patch Cable, Duplex LC UPC to LC
UPC, MM OM5, 2.0mm Riser, Lime Green



PE3FCA161

Typical Performance Data

How to Order

Part Number Configuration:

PE3FCA161

- xx

uu

Unit of Measure:

M = Meters

<blank> = Inches

Length

Base Number

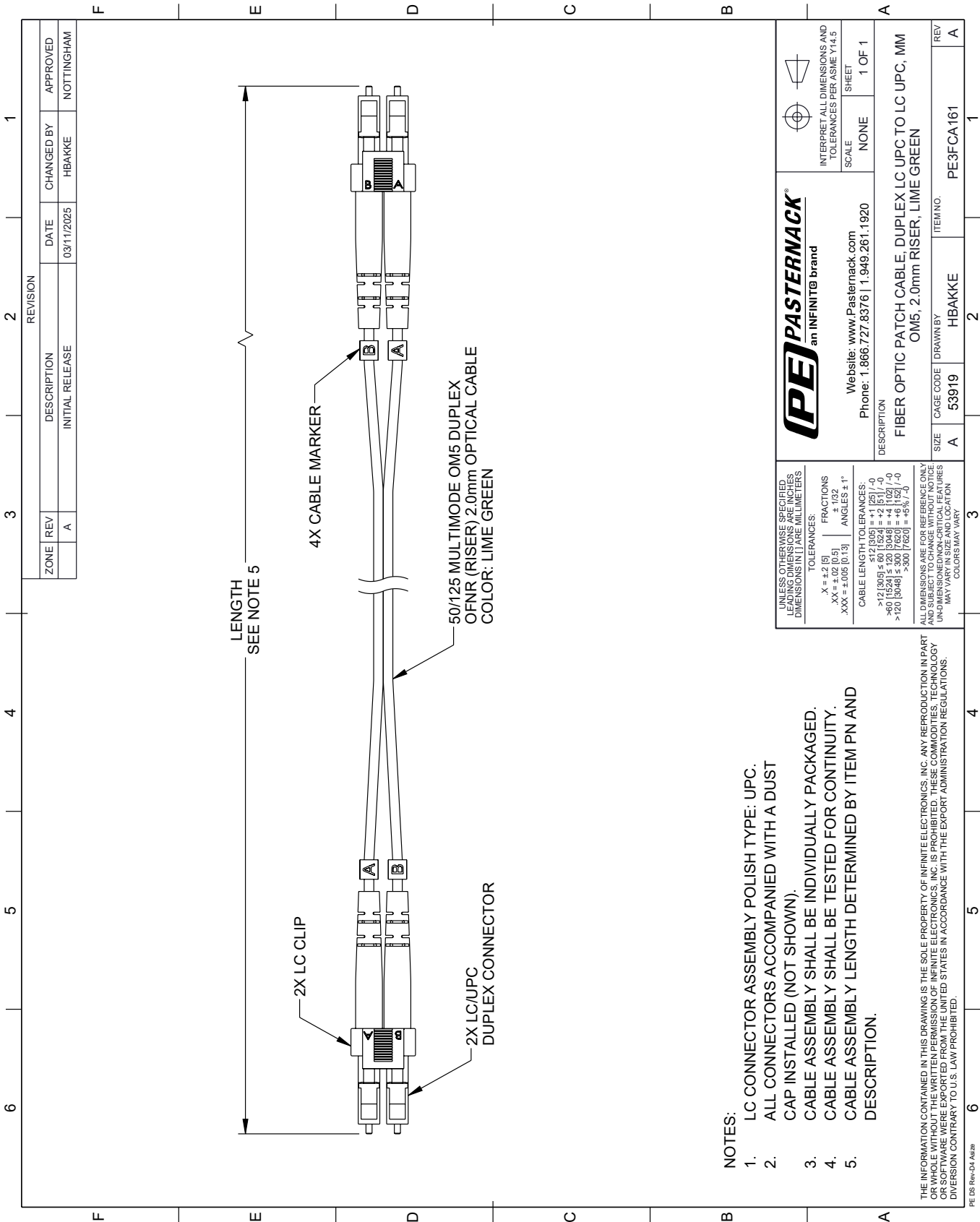
Example: PE3FCA161-12 = 12 inches long cable
PE3FCA161-100cm = 100 cm long cable

Fiber Optic Patch Cable, Duplex LC UPC to LC UPC, MM OM5, 2.0mm Riser, Lime Green from Pasternack Enterprises has same day shipment for domestic and International orders. Our RF, microwave and millimeter wave products maintain a 99.4% availability and are part of the broadest selection in the industry.

Click the following link (or enter part number in "SEARCH" on website) to obtain additional part information including price, inventory and certifications: [Fiber Optic Patch Cable, Duplex LC UPC to LC UPC, MM OM5, 2.0mm Riser, Lime Green PE3FCA161](#)

The information contained within this document is accurate to the best of our knowledge and representative of the part described herein. It may be necessary to make modifications to the part and/or the documentation of the part in order to implement improvements. Pasternack Enterprises reserves the right to make such changes as required. Unless otherwise stated, all specifications are nominal. Pasternack Enterprises does not make any representation or warranty regarding the suitability of the part described herein for any particular purpose, and Pasternack Enterprises does not assume liability arising out of the use of any part or document.

PE3FCA161 CAD Drawing
Fiber Optic Patch Cable, Duplex LC UPC to LC UPC, MM OM5, 2.0mm Riser, Lime Green



- NOTES:
- 1. LC CONNECTOR ASSEMBLY POLISH TYPE: UPC.
 - 2. ALL CONNECTORS ACCOMPANIED WITH A DUST CAP INSTALLED (NOT SHOWN).
 - 3. CABLE ASSEMBLY SHALL BE INDIVIDUALLY PACKAGED.
 - 4. CABLE ASSEMBLY SHALL BE TESTED FOR CONTINUITY.
 - 5. CABLE ASSEMBLY LENGTH DETERMINED BY ITEM PN AND DESCRIPTION.

THE INFORMATION CONTAINED IN THIS DRAWING IS THE SOLE PROPERTY OF INFINITE ELECTRONICS, INC. ANY REPRODUCTION IN PART OR WHOLE WITHOUT THE WRITTEN PERMISSION OF INFINITE ELECTRONICS, INC. IS PROHIBITED. THESE COMMODITIES, TECHNOLOGY OR SOFTWARE WERE EXPORTED FROM THE UNITED STATES IN ACCORDANCE WITH THE EXPORT ADMINISTRATION REGULATIONS. DIVISION CONTRARY TO U.S. LAW PROHIBITED.

| | | | | | |
|--|--|---|--|--|--|
| PE PASTERNAK an INFINITE brand | | Website: www.Pasternack.com Phone: 1.866.727.8376 1.949.261.1920 | | INTERPRET ALL DIMENSIONS AND TOLERANCES PER ASME Y14.5 | |
| UNLESS OTHERWISE SPECIFIED, LEADING DIMENSIONS ARE IN INCHES. DIMENSIONS IN [] ARE MILLIMETERS. | | TOLERANCES: | | SCALE: NONE | |
| .X = ±.2 [5] | | FRACTIONS | | SHEET 1 OF 1 | |
| .XX = ±.02 [0.5] | | ± 1/32 | | | |
| .XXX = ±.005 [0.13] | | ANGLES ± 1° | | | |
| CABLE LENGTH TOLERANCES: | | | | | |
| >12 [305] ≤ 60 [1524] = ±1 [25] / -0 | | | | | |
| >60 [1524] ≤ 120 [3048] = ±4 [102] / -0 | | | | | |
| >120 [3048] ≤ 300 [7620] = ±5% / -0 | | | | | |
| ALL DIMENSIONS ARE FOR REFERENCE ONLY. DIMENSIONS SHALL BE TO THE CENTER OF THE CABLE UNLESS OTHERWISE SPECIFIED. DIMENSIONS MAY VARY IN SIZE AND LOCATION. COLORS MAY VARY. | | | | | |
| DESCRIPTION | | FIBER OPTIC PATCH CABLE; DUPLEX LC UPC TO LC UPC, MM OM5, 2.0mm RISER, LIME GREEN | | | |
| SIZE | | CAGE CODE | | ITEM NO. | |
| A | | 53919 | | PE3FCA161 | |
| DRAWN BY | | HBAKKE | | REV | |
| | | | | A | |