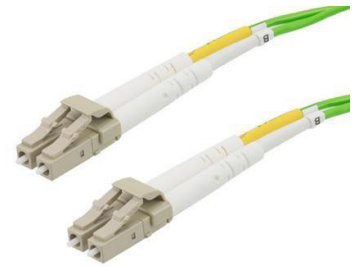


Fiber Optic Patch Cable, Duplex LC UPC to LC UPC, MM OM5, 2.0mm LSZH, Lime Green



PE3FCA162

Features

- Multimode OM5 indoor fiber optic cable assembly
- Duplex LC UPC to Duplex LC UPC
- Indoor Low Smoke Zero Halogen (LSZH) cable
- Suitable for confined installations where flame resistance is required
- 2.0mm x 4.1mm duplex zip-cord
- Custom lengths available with the same fast delivery

Applications

- Telecom & Networking
- Data Centers
- Enterprise and Corporate Networks
- Broadcasting & Media Production
- Military & Defense
- Healthcare & Medical Imaging
- Transportation & Rail
- Oil & Gas

Description

The PE3FCA162 fiber optic patch cord is a high-performance OM5 fiber optic cable assembly, tailored for superior data transmission in high-demand environments. Equipped with Duplex LC UPC to Duplex LC UPC connectors, this OM5 duplex fiber optic patch cable is optimized for indoor use and comes with a Low Smoke Zero Halogen (LSZH) cable that adheres to fire and safety requirements. With a 2.0mm x 4.1mm diameter and lime green color, this fiber optic jumper is easily identifiable in complex network setups. Its operating temperature range of -20°C to 70°C and storage temperature of -40°C to 70°C ensures reliable operation across a variety of environmental conditions.

As an OM5 fiber optic jumper, Pasternack's PE3FCA162 is designed for ultra-high-speed, high-bandwidth data transmission, supporting greater distances and faster speeds than OM3 & OM4 fiber. This makes it ideal for Telecom & Networking, Data Centers, and Enterprise and Corporate Networks, where extended reach and top-tier fiber performance is crucial. Custom lengths are available to meet specific installation needs, providing flexibility for various setups while maintaining quick delivery and consistent quality.

Beyond standard networking, the Pasternack PE3FCA162 OM5 fiber patch cord supports specialized applications in industries like Broadcasting & Media Production, Military & Defense, and Healthcare & Medical Imaging. This fiber assembly delivers a versatile and durable solution for any setup requiring robust, high-speed data transmission in controlled indoor environments. For further information on similar fiber optic products, our expert technical support and trained sales team can get you the ideal fiber optic duplex cable assembly as per your requirements.

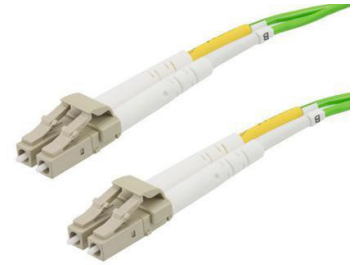
Configuration

Function	Patch
Cable Type	Duplex Multimode
Mode	Multimode
Mode Class	OM5
Fiber Diameter	50/125 um
Connection 1 Type	LC
Connection 1 Polish	UPC
Connection 2 Type	LC
Connection 2 Polish	UPC
Cable Color	Lime Green

Optical Specifications

Description	Minimum	Typical	Maximum	Units
Return Loss	30			dB

Fiber Optic Patch Cable, Duplex LC UPC to LC
UPC, MM OM5, 2.0mm LSZH, Lime Green



PE3FCA162

Optical Specifications

Description	Minimum	Typical	Maximum	Units
Insertion Loss			0.3	dB

Mechanical Specifications

Cable Assembly

Length	0 mm [0.00 in]
Width/Diameter	2 mm
Weight	294.84 g [0.65 lbs]

Cable

Cable Type	Patch
Static Bend Radius	15 mm
Dynamic Bend Radius	30 mm
Max Crush Resistance, Short Term (N/100mm)	300
Max Crush Resistance, Long Term (N/100mm)	100

Connectors

Description	Connector 1	Connector 2
Type	LC	LC
Connector Polish	UPC	UPC

Environmental Specifications

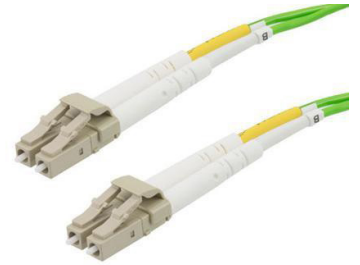
Operating Range Temperature	-20 to +70 deg C
Storage Range Temperature	-40 to +70 deg C
Ingress Protection (IP) Rating	Non-Rated

Compliance Certifications (see [product page](#) for current document)

Plotted and Other Data

Notes:

Fiber Optic Patch Cable, Duplex LC UPC to LC
UPC, MM OM5, 2.0mm LSZH, Lime Green



PE3FCA162

Typical Performance Data

How to Order

Part Number Configuration: **PE3FCA162** **- xx** **uu**

Unit of Measure:
M = Meters
<blank> = Inches

Length

Base Number

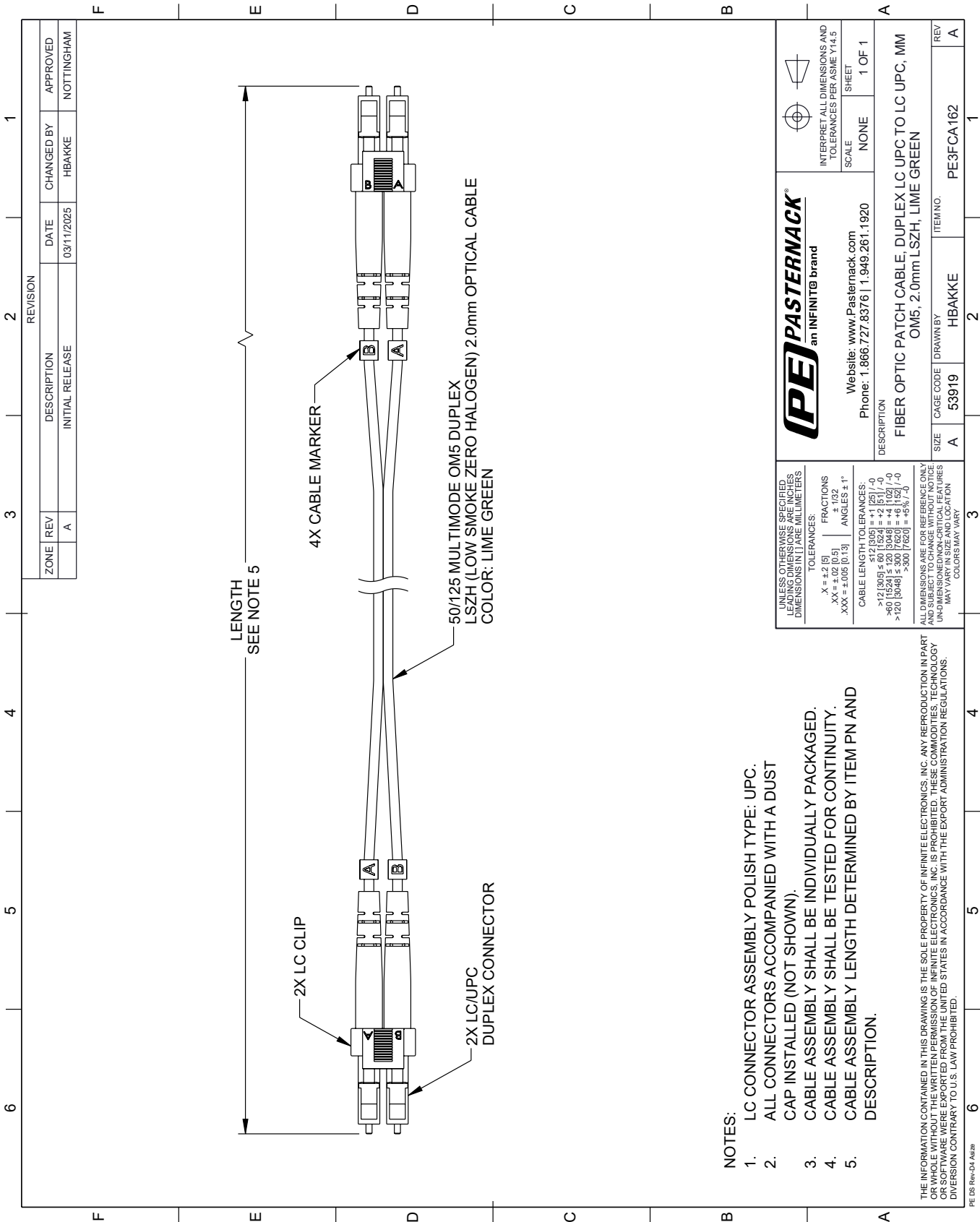
Example: PE3FCA162-12 = 12 inches long cable
PE3FCA162-100cm = 100 cm long cable

Fiber Optic Patch Cable, Duplex LC UPC to LC UPC, MM OM5, 2.0mm LSZH, Lime Green from Pasternack Enterprises has same day shipment for domestic and International orders. Our RF, microwave and millimeter wave products maintain a 99.4% availability and are part of the broadest selection in the industry.

Click the following link (or enter part number in "SEARCH" on website) to obtain additional part information including price, inventory and certifications: [Fiber Optic Patch Cable, Duplex LC UPC to LC UPC, MM OM5, 2.0mm LSZH, Lime Green PE3FCA162](#)

The information contained within this document is accurate to the best of our knowledge and representative of the part described herein. It may be necessary to make modifications to the part and/or the documentation of the part in order to implement improvements. Pasternack Enterprises reserves the right to make such changes as required. Unless otherwise stated, all specifications are nominal. Pasternack Enterprises does not make any representation or warranty regarding the suitability of the part described herein for any particular purpose, and Pasternack Enterprises does not assume liability arising out of the use of any part or document.

PE3FCA162 CAD Drawing
Fiber Optic Patch Cable, Duplex LC UPC to LC UPC, MM OM5, 2.0mm LSZH, Lime Green



- NOTES:
- 1. LC CONNECTOR ASSEMBLY POLISH TYPE: UPC.
 - 2. ALL CONNECTORS ACCOMPANIED WITH A DUST CAP INSTALLED (NOT SHOWN).
 - 3. CABLE ASSEMBLY SHALL BE INDIVIDUALLY PACKAGED.
 - 4. CABLE ASSEMBLY SHALL BE TESTED FOR CONTINUITY.
 - 5. CABLE ASSEMBLY LENGTH DETERMINED BY ITEM PN AND DESCRIPTION.

PE PASTERNAK an INFINITE® brand		Website: www.Pasternack.com Phone: 1.866.727.8376 1.949.261.1920		INTERPRET ALL DIMENSIONS AND TOLERANCES PER ASME Y14.5	
UNLESS OTHERWISE SPECIFIED, ALL DIMENSIONS ARE IN INCHES. DIMENSIONS IN [] ARE MILLIMETERS.		TOLERANCES:		SCALE: NONE	
X = ±.2 [5]		FRACTIONS ± 1/32		SHEET 1 OF 1	
.XX = ±.02 [0.5]		ANGLES ± 1°			
.XXX = ±.005 [0.13]		CABLE LENGTH TOLERANCES:			
		<12 [305] = ±1 [25] / -0			
		>12 [305] ≤ 60 [1524] = +2 [51] / -0			
		>60 [1524] ≤ 120 [3048] = +4 [102] / -0			
		>120 [3048] ≤ 300 [7620] = +6 [152] / -0			
		>300 [7620] = +8% / -0			
ALL DIMENSIONS ARE FOR REFERENCE ONLY. DIMENSIONS SHALL BE TO THE CENTER OF THE CABLE UNLESS OTHERWISE SPECIFIED. DIMENSIONS MAY VARY IN SIZE AND LOCATION. COLORS MAY VARY.		DESCRIPTION		REV	
		FIBER OPTIC PATCH CABLE; DUPLEX LC UPC TO LC UPC, MM OM5, 2.0mm LSZH, LIME GREEN		A	
		SIZE		ITEM NO.	
		A		PE3FCA162	
		CAGE CODE		DRAWN BY	
		53919		HBAKKE	
				1	

THE INFORMATION CONTAINED IN THIS DRAWING IS THE SOLE PROPERTY OF INFINITE ELECTRONICS, INC. ANY REPRODUCTION IN PART OR WHOLE WITHOUT THE WRITTEN PERMISSION OF INFINITE ELECTRONICS, INC. IS PROHIBITED. THESE COMMODITIES, TECHNOLOGY OR SOFTWARE WERE EXPORTED FROM THE UNITED STATES IN ACCORDANCE WITH THE EXPORT ADMINISTRATION REGULATIONS. DIVISION CONTRARY TO U.S. LAW PROHIBITED.

PE D8 Rev-D4 Adda