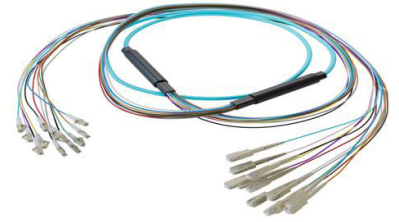


## 12-Fiber LC UPC to SC UPC, OM3 Multimode Distribution Cable, 6.2mm LSZH, 2.0mm breakout, Aqua-30M



### PE3FCA411-30M

#### Features

- 12X LC UPC to 12X SC UPC
- Indoor multimode OM3
- Low Smoke Zero Halogen (LSZH) rated cable
- 6.2mm with tight buffer and aramid yarn strength member
- 2mm TIA 598 color coded, .5M breakout
- Suitable for confined installations where flame resistance is required

#### Applications

- Data centers
- Passive Optical Networks (PON)
- Local Area Networks (LAN)
- Enterprise Networking
- Storage and cloud based services
- AI data storage and communications
- Headend termination to a fiber backbone
- Terminations of data center fiber rack system

#### Description

High-performance fiber optic cable assemblies, including the PE3FCA411-30M from Pasternack, are designed for modern, high-speed network infrastructures and part of a large selection of same day ship cable assemblies. Whether deploying fiber optic distribution assemblies for enterprise networks, fiber optic breakout assemblies for seamless interconnectivity, or fiber optic patch cord assemblies for structured cabling, our solutions ensure durability and precision. Built for data centers, telecommunications, and industrial applications, our fiber optic distribution breakout assemblies deliver superior performance, ensuring optimal signal integrity and minimal loss.

Pasternack's OM3 indoor fiber optic distribution breakout assembly (PE3FCA411-30M) is a 12-fiber multimode cable optimized for VCSEL laser sources, making it ideal for 10Gb Ethernet up to 300 meters and 40G/100G Ethernet up to 100 meters. The LC UPC to SC UPC connectors, aqua-colored Low Smoke Zero Halogen (LSZH) jacket, and tight buffered aramid yarn reinforcement provide exceptional durability and performance. With a 6.2mm overall cable diameter, 2.0mm breakout diameter, and 46.5mm (7.5D) minimum bend radius, this assembly is well-suited for data centers, structured cabling, and high-speed networking applications.

The Pasternack PE3FCA411-30M OM3 fiber optic cable assembly offers a bandwidth of 2000MHz·km, ensuring high-speed data transmission with minimal signal loss. Designed for indoor environments, it can withstand temperatures ranging from -20°C to 70°C and is suitable for confined installations where flame resistance is required. Whether for enterprise networks, storage area networks (SANs), or high-speed backbones, this OM3 fiber assembly guarantees outstanding network performance. For further information on similar products, our expert technical support and trained sales team can get you the ideal fiber optic multi-fiber cable assembly as per your requirements.

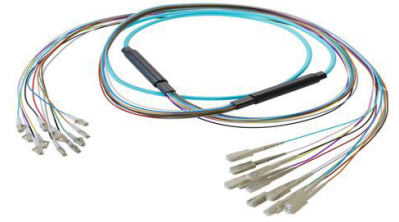
#### Configuration

|                     |                    |
|---------------------|--------------------|
| Function            | Breakout           |
| Cable Type          | 12-Fiber Multimode |
| Mode                | Multimode          |
| Mode Class          | OM3                |
| Fiber Diameter      | 50/125 um          |
| Connection 1 Type   | LC                 |
| Connection 1 Polish | UPC                |
| Connection 2 Type   | SC                 |
| Connection 2 Polish | UPC                |
| Cable Color         | Aqua Blue          |

#### Optical Specifications

| Description | Minimum | Typical | Maximum | Units |
|-------------|---------|---------|---------|-------|
| Return Loss | 30      |         |         | dB    |

12-Fiber LC UPC to SC UPC, OM3 Multimode Distribution Cable, 6.2mm LSZH, 2.0mm breakout, Aqua-30M



**PE3FCA411-30M**

**Optical Specifications**

| Description    | Minimum | Typical | Maximum | Units |
|----------------|---------|---------|---------|-------|
| Insertion Loss |         |         | 0.3     | dB    |

**Mechanical Specifications**

**Cable Assembly**

|                |                   |
|----------------|-------------------|
| Length         | 30 m [1181.10 in] |
| Width/Diameter | 6.2 mm            |
| Weight         | 303 g [0.668 lbs] |

**Cable**

|                                            |          |
|--------------------------------------------|----------|
| Cable Type                                 | Breakout |
| Static Bend Radius                         | 47 mm    |
| Dynamic Bend Radius                        | 93 mm    |
| Max Crush Resistance, Short Term (N/100mm) | 1,000    |
| Max Crush Resistance, Long Term (N/100mm)  | 300      |

**Connectors**

| Description      | Connector 1 | Connector 2 |
|------------------|-------------|-------------|
| Type             | LC          | SC          |
| Connector Polish | UPC         | UPC         |

**Environmental Specifications**

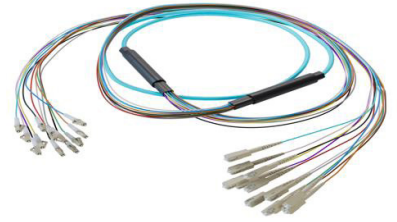
|                                |                  |
|--------------------------------|------------------|
| Operating Range Temperature    | -20 to +70 deg C |
| Storage Range Temperature      | -40 to +70 deg C |
| Ingress Protection (IP) Rating | Non-Rated        |

**Compliance Certifications** (see [product page](#) for current document)

**Plotted and Other Data**

Notes:

12-Fiber LC UPC to SC UPC, OM3 Multimode Distribution Cable, 6.2mm LSZH, 2.0mm breakout, Aqua-30M



**PE3FCA411-30M**

**Typical Performance Data**

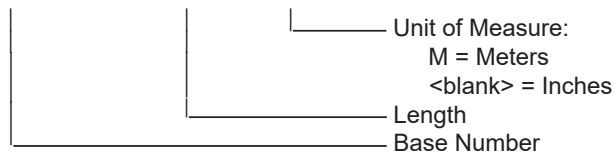
**How to Order**

Part Number Configuration:

**PE3FCA411**

**- xx**

**uu**



Example: PE3FCA411-12 = 12 inches long cable  
PE3FCA411-100cm = 100 cm long cable

12-Fiber LC UPC to SC UPC, OM3 Multimode Distribution Cable, 6.2mm LSZH, 2.0mm breakout, Aqua-30M from Pasternack Enterprises has same day shipment for domestic and International orders. Our RF, microwave and millimeter wave products maintain a 99.4% availability and are part of the broadest selection in the industry.

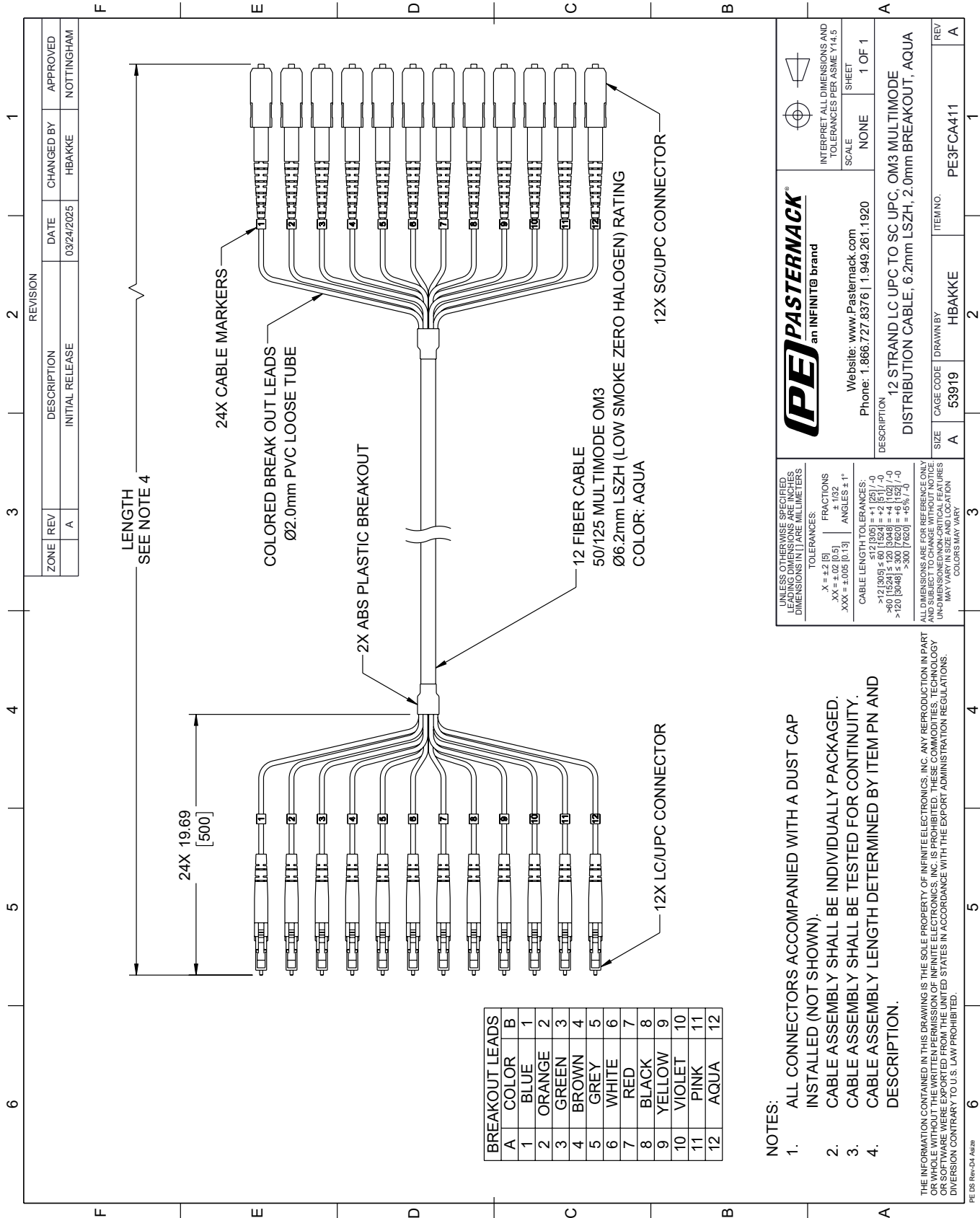
Click the following link (or enter part number in "SEARCH" on website) to obtain additional part information including price, inventory and certifications: [12-Fiber LC UPC to SC UPC, OM3 Multimode Distribution Cable, 6.2mm LSZH, 2.0mm breakout, Aqua-30M PE3FCA411-30M](#)

URL: <https://www.pasternack.com/lc-sc-multimode-upc-fiber-optic-cable-assembly-pe3fca411-30m-p.aspx>

The information contained within this document is accurate to the best of our knowledge and representative of the part described herein. It may be necessary to make modifications to the part and/or the documentation of the part in order to impliment improvements. Pasternack Enterprises reserves the right to make such changes as required. Unless otherwise stated, all specifications are nominal. Pasternack Enterprises does not make any representation or warranty regarding the suitability of the part described herein for any particular purpose, and Pasternack Enterprises does not assume liability arising out of the use of any part or document.

# PE3FCA411-30M CAD Drawing

12-Fiber LC UPC to SC UPC, OM3 Multimode Distribution Cable, 6.2mm LSZH, 2.0mm breakout, Aqua-30M



| ZONE | REV | DESCRIPTION     | DATE       | CHANGED BY | APPROVED   |
|------|-----|-----------------|------------|------------|------------|
|      | A   | INITIAL RELEASE | 03/24/2025 | HBAKKE     | NOTTINGHAM |

**PE PASTERNAK**  
an INFINITE brand

Website: [www.Pasternack.com](http://www.Pasternack.com)  
Phone: 1.866.727.8376 | 1.949.261.1920

UNLESS OTHERWISE SPECIFIED, LEADING DIMENSIONS ARE IN INCHES AND DIMENSIONS IN [ ] ARE MILLIMETERS.

TOLERANCES:  
 .X = ±.2 [5]  
 .XX = ±.02 [0.5]  
 .XXX = ±.005 [0.13]

FRACTIONS: ±.1/32  
 ANGLES: ±1°

CABLE LENGTH TOLERANCES:  
 >12 [305] ≤ 60 [1524] = ±.1 [2.5] / -0  
 >60 [1524] ≤ 120 [3048] = ±.4 [102] / -0  
 >120 [3048] ≤ 300 [7620] = ±.8 [20] / -0

ALL DIMENSIONS ARE FOR REFERENCE ONLY. UNLESS OTHERWISE SPECIFIED, DIMENSIONS ARE IN INCHES AND DIMENSIONS IN [ ] ARE MILLIMETERS. COLORS MAY VARY.

INTERPRET ALL DIMENSIONS AND TOLERANCES PER ASME Y14.5

SCALE: NONE  
SHEET: 1 OF 1

DESCRIPTION: 12 STRAND LC UPC TO SC UPC, OM3 MULTIMODE DISTRIBUTION CABLE, 6.2mm LSZH, 2.0mm BREAKOUT, AQUA

| SIZE | CAGE CODE | DRAWN BY | ITEM NO.  |
|------|-----------|----------|-----------|
| A    | 53919     | HBAKKE   | PE3FCA411 |

**NOTES:**

- ALL CONNECTORS ACCOMPANIED WITH A DUST CAP INSTALLED (NOT SHOWN).
- CABLE ASSEMBLY SHALL BE INDIVIDUALLY PACKAGED.
- CABLE ASSEMBLY SHALL BE TESTED FOR CONTINUITY.
- CABLE ASSEMBLY LENGTH DETERMINED BY ITEM PN AND DESCRIPTION.

THE INFORMATION CONTAINED IN THIS DRAWING IS THE SOLE PROPERTY OF INFINITE ELECTRONICS, INC. ANY REPRODUCTION IN PART OR WHOLE WITHOUT THE WRITTEN PERMISSION OF INFINITE ELECTRONICS, INC. IS PROHIBITED. THESE COMMODITIES, TECHNOLOGY OR SOFTWARE WERE EXPORTED FROM THE UNITED STATES IN ACCORDANCE WITH THE EXPORT ADMINISTRATION REGULATIONS. DIVISION CONTRARY TO U.S. LAW PROHIBITED.

PE DS Rev-04 Add2