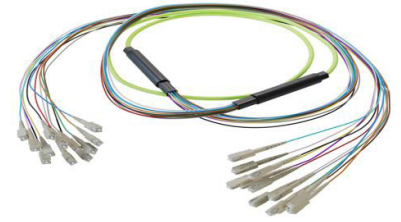


12-Fiber SC UPC to SC UPC, OM5 Multimode Distribution Cable, 6.2mm LSZH, 2.0mm breakout, Lime Green-10M



PE3FCA450-10M

Features

- 12X SC UPC to 12X SC UPC
- Indoor multimode OM5
- Low Smoke Zero Halogen (LSZH) rated cable
- 6.2mm with tight buffer and aramid yarn strength member
- 2mm TIA 598 color coded, .5M breakout
- Suitable for confined installations where flame resistance is required

Applications

- Data centers
- Passive Optical Networks (PON)
- Local Area Networks (LAN)
- Enterprise Networking
- Storage and cloud based services
- AI data storage and communications
- Headend termination to a fiber backbone
- Terminations of data center fiber rack system

Description

High-performance fiber optic cable assemblies, including the PE3FCA450-10M from Pasternack, are designed for modern, high-speed network infrastructures and part of a large selection of same day ship cable assemblies. Whether deploying fiber optic distribution assemblies for enterprise networks, fiber optic breakout assemblies for seamless interconnectivity, or fiber optic patch cord assemblies for structured cabling, our solutions ensure durability and precision. Built for data centers, telecommunications, and industrial applications, our fiber optic distribution breakout assemblies deliver superior performance, ensuring optimal signal integrity and minimal loss.

The Pasternack PE3FCA450-10M indoor OM5 fiber optic distribution cable offers cutting-edge Wideband Multimode Fiber (WBMMF) technology, making it an ideal choice for next-generation networking. Supporting at least four WDM channels at 28Gbps per channel over the 850-953nm wavelength range, this 12 fiber assembly is optimized for shortwave Wavelength Division Multiplexing (SWDM). It features SC UPC to SC UPC connectors, a lime green Low Smoke Zero Halogen (LSZH) jacket, and a tight buffered aramid yarn construction for enhanced durability.

With a bandwidth of 28000MHz·km, Pasternack's PE3FCA450-10M OM5 fiber optic cable assembly provides high-speed, high-density connectivity for cloud computing, data centers, and 400G Ethernet applications. The 6.2mm overall diameter, 2.0mm breakout diameter, and 46.5mm (7.5D) minimum bend radius offer flexible installation options, while the -20°C to 70°C operating temperature ensures consistent performance in demanding network environments. Engineered for indoor high-speed deployments, this fiber optic assembly guarantees reliability and superior signal integrity. For further information on similar products, our expert technical support and trained sales team can get you the ideal fiber optic multi-fiber cable assembly as per your requirements.

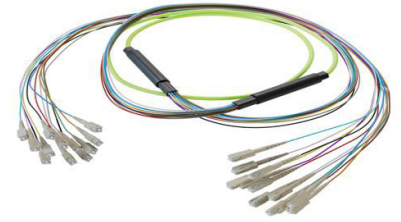
Configuration

Function	Breakout
Cable Type	12-Fiber Multimode
Mode	Multimode
Mode Class	OM5
Fiber Diameter	50/125 um
Connection 1 Type	SC
Connection 1 Polish	UPC
Connection 2 Type	SC
Connection 2 Polish	UPC
Cable Color	Lime Green

Optical Specifications

Description	Minimum	Typical	Maximum	Units
Return Loss	30			dB

12-Fiber SC UPC to SC UPC, OM5 Multimode Distribution Cable, 6.2mm LSZH, 2.0mm breakout, Lime Green-10M



PE3FCA450-10M

Optical Specifications

Description	Minimum	Typical	Maximum	Units
Insertion Loss			0.3	dB

Mechanical Specifications

Cable Assembly

Length	10 m [393.70 in]
Width/Diameter	6.2 mm
Weight	192.32 g [0.424 lbs]

Cable

Cable Type	Breakout
Static Bend Radius	47 mm
Dynamic Bend Radius	93 mm
Max Crush Resistance, Short Term (N/100mm)	1,000
Max Crush Resistance, Long Term (N/100mm)	300

Connectors

Description	Connector 1	Connector 2
Type	SC	SC
Connector Polish	UPC	UPC

Environmental Specifications

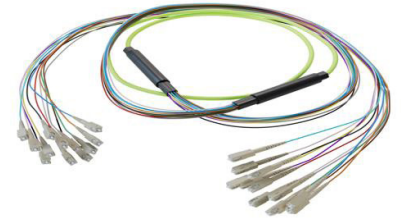
Operating Range Temperature	-20 to +70 deg C
Storage Range Temperature	-40 to +70 deg C
Ingress Protection (IP) Rating	Non-Rated

Compliance Certifications (see [product page](#) for current document)

Plotted and Other Data

Notes:

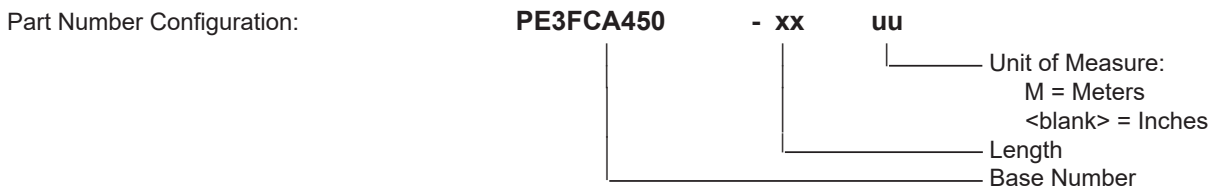
12-Fiber SC UPC to SC UPC, OM5 Multimode Distribution Cable, 6.2mm LSZH, 2.0mm breakout, Lime Green-10M



PE3FCA450-10M

Typical Performance Data

How to Order



Example: PE3FCA450-12 = 12 inches long cable
 PE3FCA450-100cm = 100 cm long cable

12-Fiber SC UPC to SC UPC, OM5 Multimode Distribution Cable, 6.2mm LSZH, 2.0mm breakout, Lime Green-10M from Pasternack Enterprises has same day shipment for domestic and International orders. Our RF, microwave and millimeter wave products maintain a 99.4% availability and are part of the broadest selection in the industry.

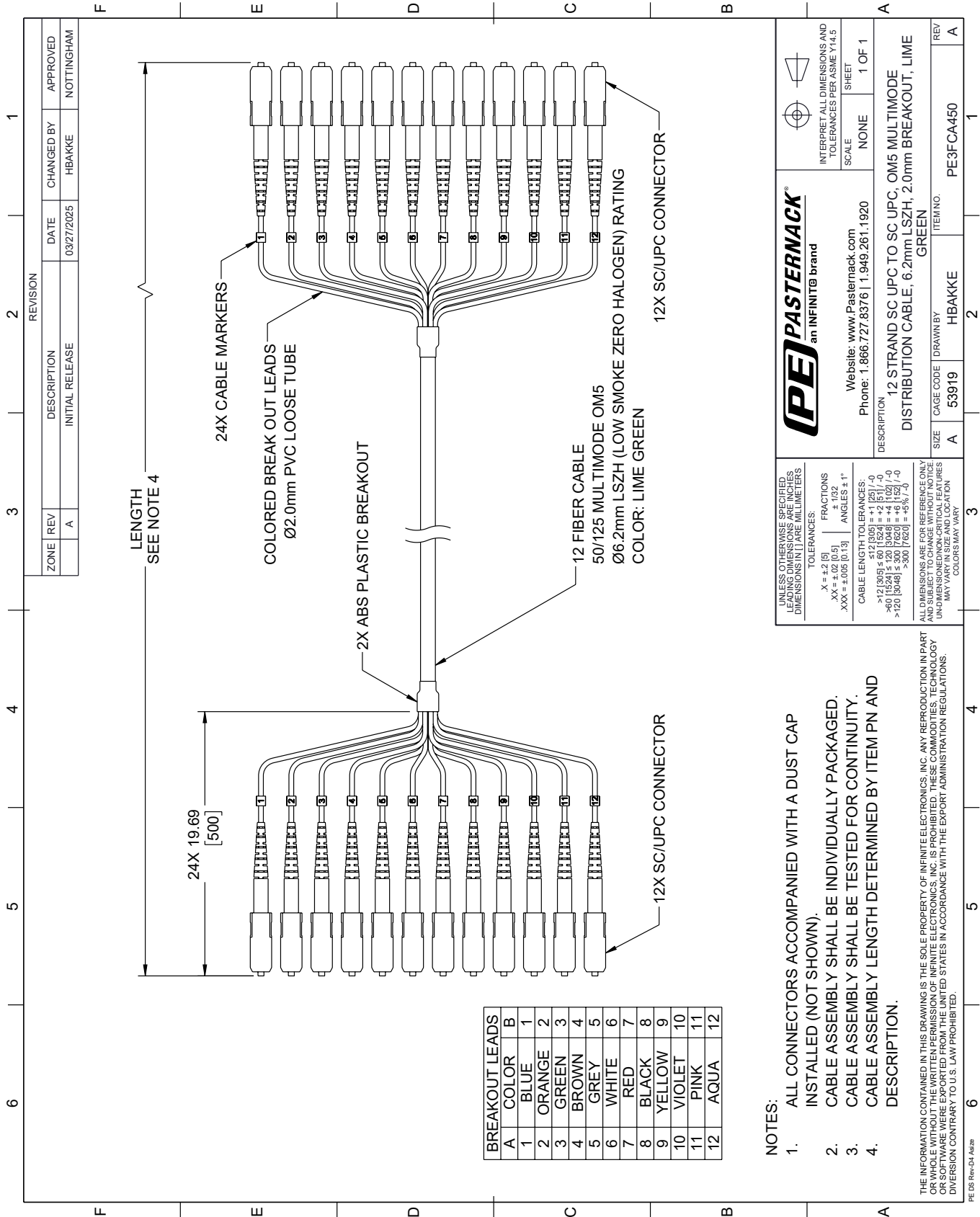
Click the following link (or enter part number in "SEARCH" on website) to obtain additional part information including price, inventory and certifications: [12-Fiber SC UPC to SC UPC, OM5 Multimode Distribution Cable, 6.2mm LSZH, 2.0mm breakout, Lime Green-10M PE3FCA450-10M](#)

URL: <https://www.pasternack.com/sc-sc-multimode-upc-fiber-optic-cable-assembly-pe3fca450-10m-p.aspx>

The information contained within this document is accurate to the best of our knowledge and representative of the part described herein. It may be necessary to make modifications to the part and/or the documentation of the part in order to impliment improvements. Pasternack Enterprises reserves the right to make such changes as required. Unless otherwise stated, all specifications are nominal. Pasternack Enterprises does not make any representation or warranty regarding the suitability of the part described herein for any particular purpose, and Pasternack Enterprises does not assume liability arising out of the use of any part or document.

PE3FCA450-10M CAD Drawing

12-Fiber SC UPC to SC UPC, OM5 Multimode Distribution Cable, 6.2mm LSZH, 2.0mm breakout, Lime Green-10M



ZONE	REV	DESCRIPTION	DATE	CHANGED BY	APPROVED
	A	INITIAL RELEASE	03/27/2025	HBAKKE	NOTTINGHAM

PE PASTERNAK
an INFINITE brand

Website: www.Pasternack.com
Phone: 1.866.727.8376 | 1.949.261.1920

DESCRIPTION: 12 STRAND SC UPC TO SC UPC, OM5 MULTIMODE DISTRIBUTION CABLE, 6.2mm LSZH, 2.0mm BREAKOUT, LIME GREEN

ITEM NO. PE3FCA450

INTERPRET ALL DIMENSIONS AND TOLERANCES PER ASME Y14.5

SCALE: NONE

SHEET: 1 OF 1

UNLESS OTHERWISE SPECIFIED, LEADING DIMENSIONS ARE IN INCHES AND DIMENSIONS IN [] ARE MILLIMETERS

TOLERANCES: X = ±.2 [5] FRACTIONS ± 1/32
 .XX = ±.02 [0.5] ANGLES ± 1°
 .XXX = ±.005 [0.13]

CABLE LENGTH TOLERANCES:
 >12 [305] ≤ 60 [1524] = ±.125 [-0
 >60 [1524] ≤ 120 [3048] = ±.1 [2.5] [-0
 >120 [3048] ≤ 300 [7620] = ±.5% [-0

ALL DIMENSIONS ARE FOR REFERENCE ONLY. UNLESS OTHERWISE SPECIFIED, DIMENSIONS ARE IN INCHES AND DIMENSIONS IN [] ARE MILLIMETERS. DIMENSIONS/LOCATIONS MAY VARY IN SIZE AND LOCATION. COLORS MAY VARY.

NOTES:

- ALL CONNECTORS ACCOMPANIED WITH A DUST CAP INSTALLED (NOT SHOWN).
- CABLE ASSEMBLY SHALL BE INDIVIDUALLY PACKAGED.
- CABLE ASSEMBLY SHALL BE TESTED FOR CONTINUITY.
- CABLE ASSEMBLY LENGTH DETERMINED BY ITEM PN AND DESCRIPTION.

THE INFORMATION CONTAINED IN THIS DRAWING IS THE SOLE PROPERTY OF INFINITE ELECTRONICS, INC. ANY REPRODUCTION IN PART OR WHOLE WITHOUT THE WRITTEN PERMISSION OF INFINITE ELECTRONICS, INC. IS PROHIBITED. THESE COMMODITIES, TECHNOLOGY OR SOFTWARE WERE EXPORTED FROM THE UNITED STATES IN ACCORDANCE WITH THE EXPORT ADMINISTRATION REGULATIONS. DIVISION CONTRARY TO U.S. LAW PROHIBITED.

PE DS Rev-04 Asst