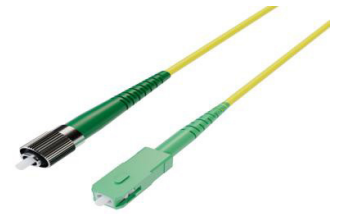


## Fiber Optic Patch Cable, Simplex FC APC, NK to SC APC, SM OS2, 2.0mm PVC, Yellow-5M



### PE3FCA497-5M

#### Features

- Single Mode OS2 fiber optic cable assembly
- Simplex FC APC to SC APC
- Indoor PVC cable
- Suitable for general purpose areas
- Custom lengths available with the same fast delivery

#### Applications

- Telecom & Networking
- Data Centers
- Enterprise and Corporate Networks
- Broadcasting & Media Production
- Military & Defense
- Healthcare & Medical Imaging
- Transportation & Rail
- Oil & Gas

#### Description

The PE3FCA497-5M fiber optic patch cord is a robust and versatile fiber optic cable assembly from Pasternack designed for high-performance data transmission in various environments. Equipped with Simplex FC APC to SC APC connectors, this simplex OS2 Single Mode fiber optic patch cable is optimized for indoor use, featuring a PVC cable material. The 2.0mm diameter construction, combined with its Yellow color, makes it easy to identify in complex setups, while its operating temperature range of -20°C to 70°C and storage temperature of -40°C to 70°C provides reliable performance across diverse conditions.

The Pasternack PE3FCA497-5M fiber optic jumper is ideal for applications where reliable, long-range data connectivity is critical. The Single Mode design of the OS2 fiber offers stable, high-speed transmission over long distances, making it suitable for Telecom & Networking, Data Centers, and Corporate Networks. With the flexibility of custom lengths, Pasternack's PE3FCA497-5M fiber optic assembly can be tailored to meet specific installation requirements, ensuring efficient network management in high-density, setups without compromising on delivery time or quality.

Beyond networking, the Pasternack PE3FCA497-5M fiber patch cord supports an array of industry applications, from Broadcasting & Media Production and Military & Defense to Healthcare & Medical Imaging. This assembly offers a reliable and durable solution for any setting requiring high-quality data transmission in a controlled, indoor environment. For further information on similar optic products, our expert technical support and trained sales team can get you the ideal fiber optic simplex cable assembly as per your requirements.

#### Configuration

|                     |                     |
|---------------------|---------------------|
| Function            | Patch               |
| Cable Type          | Simplex Single Mode |
| Mode                | Single Mode         |
| Mode Class          | OS2                 |
| Fiber Diameter      | 9/125 um            |
| Connection 1 Type   | FC                  |
| Connection 1 Polish | APC                 |
| Connection 2 Type   | SC                  |
| Connection 2 Polish | APC                 |
| Cable Color         | Yellow              |

#### Optical Specifications

| Description | Minimum | Typical | Maximum | Units |
|-------------|---------|---------|---------|-------|
| Return Loss | 60      |         |         | dB    |

Fiber Optic Patch Cable, Simplex FC APC, NK to SC APC, SM OS2, 2.0mm PVC, Yellow-5M



## PE3FCA497-5M

### Optical Specifications

| Description    | Minimum | Typical | Maximum | Units |
|----------------|---------|---------|---------|-------|
| Insertion Loss |         |         | 0.3     | dB    |

### Mechanical Specifications

#### Cable Assembly

|                |                     |
|----------------|---------------------|
| Length         | 5 m [196.85 in]     |
| Width/Diameter | 2 mm                |
| Weight         | 11.34 g [0.025 lbs] |

#### Cable

|  |       |
|--|-------|
| Cable Type                                 | Patch |
| Static Bend Radius                         | 15 mm |
| Dynamic Bend Radius                        | 30 mm |
| Max Crush Resistance, Short Term (N/100mm) | 200   |
| Max Crush Resistance, Long Term (N/100mm)  | 50    |

### Connectors

| Description      | Connector 1               | Connector 2 |
|------------------|---------------------------|-------------|
| Type             | FC                        | SC          |
| Specification    | Key with of 1.95mm-2.05mm |             |
| Connector Polish | APC                       | APC         |

### Environmental Specifications

|                                |                  |
|--------------------------------|------------------|
| Operating Range Temperature    | -20 to +70 deg C |
| Storage Range Temperature      | -40 to +70 deg C |
| Ingress Protection (IP) Rating | Non-Rated        |

**Compliance Certifications** (see [product page](#) for current document)

### Plotted and Other Data

Notes:

Fiber Optic Patch Cable, Simplex FC APC, NK to SC APC, SM OS2, 2.0mm PVC, Yellow-5M



## PE3FCA497-5M

### Typical Performance Data

### How to Order

Part Number Configuration:

**PE3FCA497**

**- xx**

**uu**

Unit of Measure:

M = Meters

<blank> = Inches

Length

Base Number

Example: PE3FCA497-12 = 12 inches long cable  
PE3FCA497-100cm = 100 cm long cable

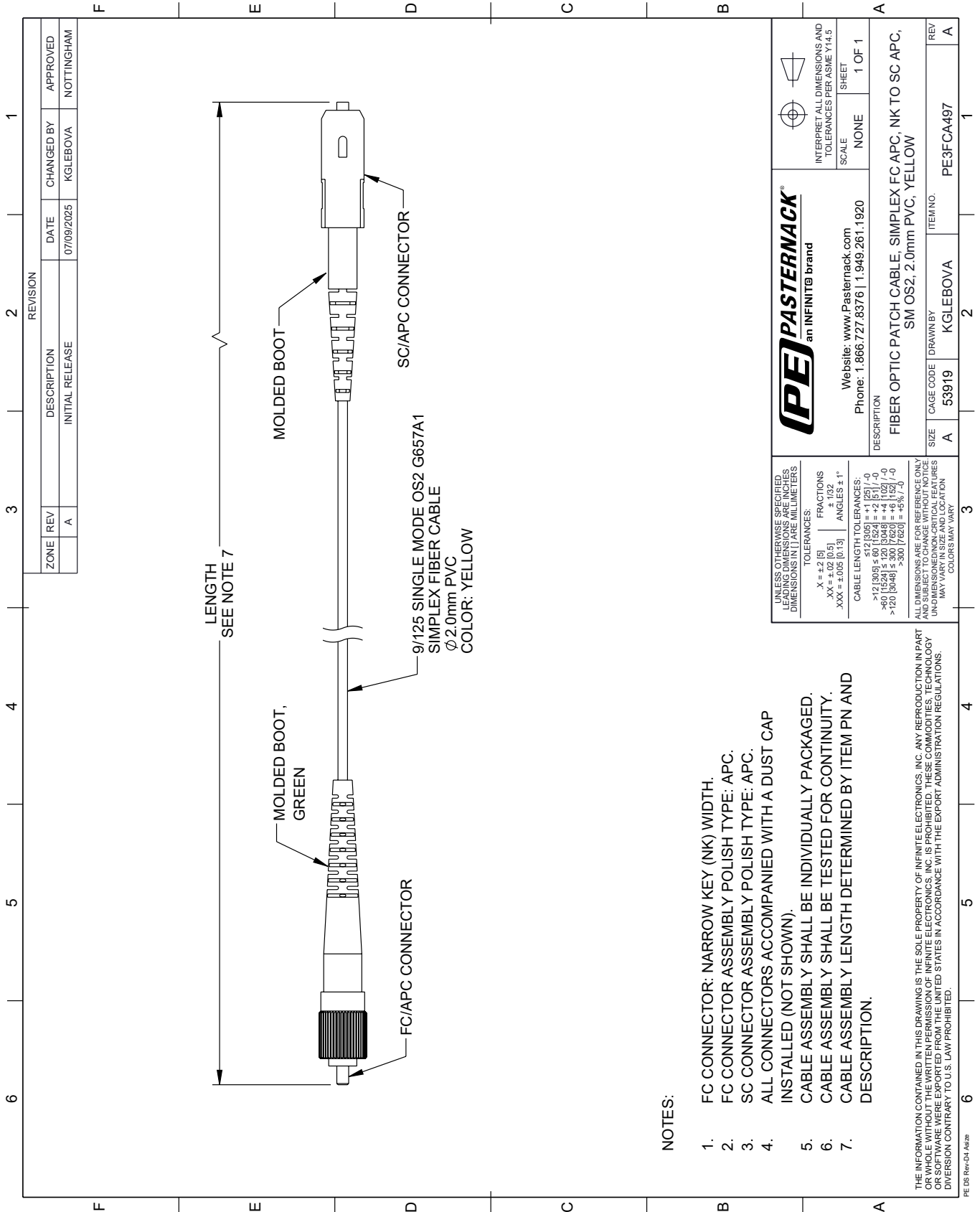
Fiber Optic Patch Cable, Simplex FC APC, NK to SC APC, SM OS2, 2.0mm PVC, Yellow-5M from Pasternack Enterprises has same day shipment for domestic and International orders. Our RF, microwave and millimeter wave products maintain a 99.4% availability and are part of the broadest selection in the industry.

Click the following link (or enter part number in "SEARCH" on website) to obtain additional part information including price, inventory and certifications: [Fiber Optic Patch Cable, Simplex FC APC, NK to SC APC, SM OS2, 2.0mm PVC, Yellow-5M PE3FCA497-5M](#)

The information contained within this document is accurate to the best of our knowledge and representative of the part described herein. It may be necessary to make modifications to the part and/or the documentation of the part in order to implement improvements. Pasternack Enterprises reserves the right to make such changes as required. Unless otherwise stated, all specifications are nominal. Pasternack Enterprises does not make any representation or warranty regarding the suitability of the part described herein for any particular purpose, and Pasternack Enterprises does not assume liability arising out of the use of any part or document.

# PE3FCA497-5M CAD Drawing

Fiber Optic Patch Cable, Simplex FC APC, NK to SC APC, SM OS2, 2.0mm PVC, Yellow-5M



**NOTES:**

1. FC CONNECTOR: NARROW KEY (NK) WIDTH.
2. FC CONNECTOR ASSEMBLY POLISH TYPE: APC.
3. SC CONNECTOR ASSEMBLY POLISH TYPE: APC.
4. ALL CONNECTORS ACCOMPANIED WITH A DUST CAP INSTALLED (NOT SHOWN).
5. CABLE ASSEMBLY SHALL BE INDIVIDUALLY PACKAGED.
6. CABLE ASSEMBLY SHALL BE TESTED FOR CONTINUITY.
7. CABLE ASSEMBLY LENGTH DETERMINED BY ITEM PN AND DESCRIPTION.

THE INFORMATION CONTAINED IN THIS DRAWING IS THE SOLE PROPERTY OF INFINITE ELECTRONICS, INC. ANY REPRODUCTION IN PART OR WHOLE WITHOUT THE WRITTEN PERMISSION OF INFINITE ELECTRONICS, INC. IS PROHIBITED. THESE COMMODITIES, TECHNOLOGY OR SERVICES ARE EXPORTED FROM THE UNITED STATES IN ACCORDANCE WITH THE EXPORT ADMINISTRATION REGULATIONS. DIVISION CONTRARY TO U.S. LAW PROHIBITED.

PE DS Rev-04 Add2

| REVISION        |     | DATE       | CHANGED BY | APPROVED   |
|-----------------|-----|------------|------------|------------|
| ZONE            | REV |            |            |            |
|                 | A   | 07/09/2025 | KGLEBOVA   | NOTTINGHAM |
| DESCRIPTION     |     |            |            |            |
| INITIAL RELEASE |     |            |            |            |

|  |           |   |           |
|--|-----------|---|-----------|
| <br>an INFINITE brand |           | Website: <a href="http://www.Pasternack.com">www.Pasternack.com</a><br>Phone: 1.866.727.8376   1.949.261.1920 |           |
|  |           | INTERPRET ALL DIMENSIONS AND TOLERANCES PER ASME Y14.5<br>SCALE: NONE<br>SHEET: 1 OF 1                        |           |
| DESCRIPTION  |           |   |           |
| FIBER OPTIC PATCH CABLE, SIMPLEX FC APC, NK TO SC APC, SM OS2, 2.0mm PVC, YELLOW                         |           |   |           |
| SIZE   | CAGE CODE | DRAWN BY  | ITEM NO.  |
| A  | 53919     | KGLEBOVA  | PE3FCA497 |
| REV  |           | A   |           |

UNLESS OTHERWISE SPECIFIED, LEADING DIMENSIONS ARE IN INCHES. DIMENSIONS IN [ ] ARE MILLIMETERS.

TOLERANCES:  
 .X = ±.2 [5]  
 .XX = ±.02 [0.5]  
 .XXX = ±.005 [0.13]

FRACTIONS  
 ± 1/32  
 ANGLES ± 1°

CABLE LENGTH TOLERANCES:  
 <12 [305] ≤ 60 [1524] = ±.1 [25] / -0  
 >60 [1524] ≤ 120 [3048] = ±.4 [102] / -0  
 >120 [3048] ≤ 300 [7620] = ±.6 [15] / -0

ALL DIMENSIONS ARE FOR REFERENCE ONLY. DIMENSIONS OF CRITICAL FEATURES MAY VARY IN SIZE AND LOCATION. COLORS MAY VARY.