

Fiber Optic Patch Cable, Simplex FC UPC, NK to SC UPC, SM OS2, 2.0mm LSZH, Yellow-5M



PE3FCA500-5M

Features

- Single Mode OS2 fiber optic cable assembly
- Simplex FC UPC to SC UPC
- Indoor Low Smoke Zero Halogen (LSZH) cable
- Suitable for confined installations where flame resistance is required
- Custom lengths available with the same fast delivery

Applications

- Telecom & Networking
- Data Centers
- Enterprise and Corporate Networks
- Broadcasting & Media Production
- Military & Defense
- Healthcare & Medical Imaging
- Transportation & Rail
- Oil & Gas

Description

The PE3FCA500-5M fiber optic patch cord is a robust and versatile fiber optic cable assembly from Pasternack designed for high-performance data transmission in various environments. Equipped with Simplex FC UPC to SC UPC connectors, this simplex OS2 Single Mode fiber optic patch cable is optimized for indoor use, featuring a Low Smoke Zero Halogen (LSZH) cable that ensures compliance with fire and safety standards. The 2.0mm diameter construction, combined with its Yellow color, makes it easy to identify in complex setups, while its operating temperature range of -20°C to 70°C and storage temperature of -40°C to 70°C provides reliable performance across diverse conditions.

The Pasternack PE3FCA500-5M fiber optic jumper is ideal for applications where reliable, long-range data connectivity is critical. The Single Mode design of the OS2 fiber offers stable, high-speed transmission over long distances, making it suitable for Telecom & Networking, Data Centers, and Corporate Networks. With the flexibility of custom lengths, Pasternack's PE3FCA500-5M fiber optic assembly can be tailored to meet specific installation requirements, ensuring efficient network management in high-density, setups without compromising on delivery time or quality.

Beyond networking, the Pasternack PE3FCA500-5M fiber patch cord supports an array of industry applications, from Broadcasting & Media Production and Military & Defense to Healthcare & Medical Imaging. This assembly offers a reliable and durable solution for any setting requiring high-quality data transmission in a controlled, indoor environment. For further information on similar optic products, our expert technical support and trained sales team can get you the ideal fiber optic simplex cable assembly as per your requirements.

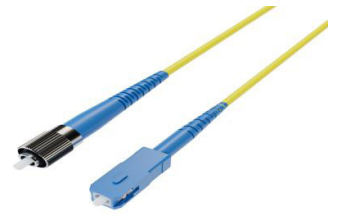
Configuration

Function	Patch
Cable Type	Simplex Single Mode
Mode	Single Mode
Mode Class	OS2
Fiber Diameter	9/125 um
Connection 1 Type	FC
Connection 1 Polish	UPC
Connection 2 Type	SC
Connection 2 Polish	UPC
Cable Color	Yellow

Optical Specifications

Description	Minimum	Typical	Maximum	Units
Return Loss	50			dB

Fiber Optic Patch Cable, Simplex FC UPC, NK to SC UPC, SM OS2, 2.0mm LSZH, Yellow-5M



PE3FCA500-5M

Optical Specifications

Description	Minimum	Typical	Maximum	Units
Insertion Loss			0.3	dB

Mechanical Specifications

Cable Assembly

Length	5 m [196.85 in]
Width/Diameter	2 mm
Weight	11.34 g [0.025 lbs]

Cable

Cable Type	Patch
Static Bend Radius	15 mm
Dynamic Bend Radius	30 mm
Max Crush Resistance, Short Term (N/100mm)	200
Max Crush Resistance, Long Term (N/100mm)	50

Connectors

Description	Connector 1	Connector 2
Type	FC	SC
Specification	Key with of 1.95mm-2.05mm	
Connector Polish	UPC	UPC

Environmental Specifications

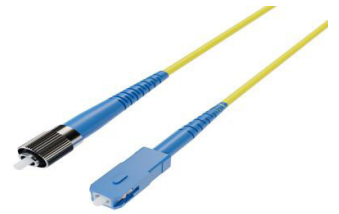
Operating Range Temperature	-20 to +70 deg C
Storage Range Temperature	-40 to +70 deg C
Ingress Protection (IP) Rating	Non-Rated

Compliance Certifications (see [product page](#) for current document)

Plotted and Other Data

Notes:

Fiber Optic Patch Cable, Simplex FC UPC, NK to SC UPC, SM OS2, 2.0mm LSZH, Yellow-5M



PE3FCA500-5M

Typical Performance Data

How to Order

Part Number Configuration:

PE3FCA500

- **xx**

uu

Unit of Measure:

M = Meters

<blank> = Inches

Length

Base Number

Example: PE3FCA500-12 = 12 inches long cable
PE3FCA500-100cm = 100 cm long cable

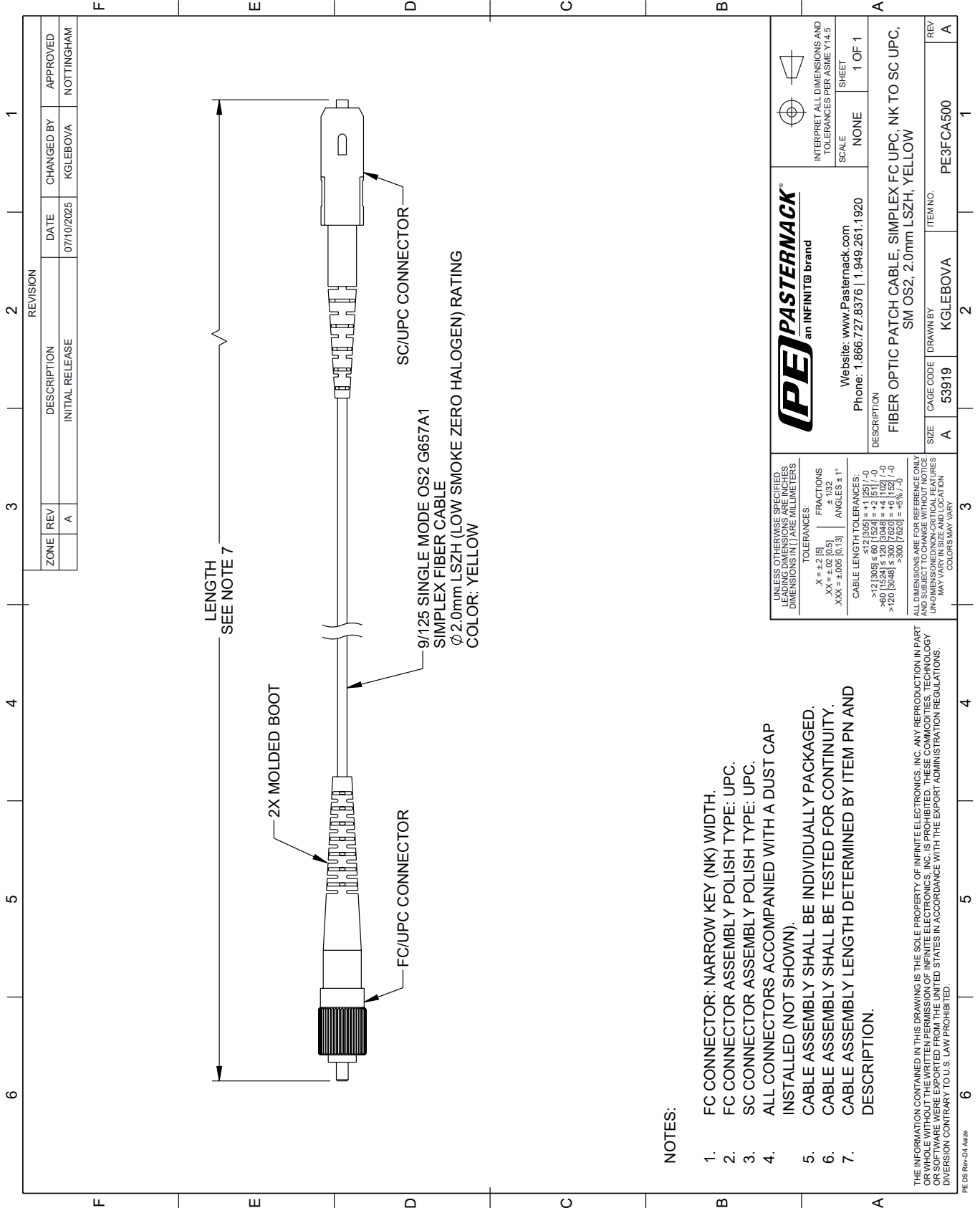
Fiber Optic Patch Cable, Simplex FC UPC, NK to SC UPC, SM OS2, 2.0mm LSZH, Yellow-5M from Pasternack Enterprises has same day shipment for domestic and International orders. Our RF, microwave and millimeter wave products maintain a 99.4% availability and are part of the broadest selection in the industry.

Click the following link (or enter part number in "SEARCH" on website) to obtain additional part information including price, inventory and certifications: [Fiber Optic Patch Cable, Simplex FC UPC, NK to SC UPC, SM OS2, 2.0mm LSZH, Yellow-5M PE3FCA500-5M](#)

The information contained within this document is accurate to the best of our knowledge and representative of the part described herein. It may be necessary to make modifications to the part and/or the documentation of the part in order to implement improvements. Pasternack Enterprises reserves the right to make such changes as required. Unless otherwise stated, all specifications are nominal. Pasternack Enterprises does not make any representation or warranty regarding the suitability of the part described herein for any particular purpose, and Pasternack Enterprises does not assume liability arising out of the use of any part or document.

PE3FCA500-5M CAD Drawing

Fiber Optic Patch Cable, Simplex FC UPC, NK to SC UPC, SM OS2, 2.0mm LSZH, Yellow-5M



NOTES:

1. FC CONNECTOR: NARROW KEY (NK) WIDTH.
2. FC CONNECTOR ASSEMBLY POLISH TYPE: UPC.
3. SC CONNECTOR ASSEMBLY POLISH TYPE: UPC.
4. ALL CONNECTORS ACCOMPANIED WITH A DUST CAP INSTALLED (NOT SHOWN).
5. CABLE ASSEMBLY SHALL BE INDIVIDUALLY PACKAGED.
6. CABLE ASSEMBLY SHALL BE TESTED FOR CONTINUITY.
7. CABLE ASSEMBLY LENGTH DETERMINED BY ITEM PN AND DESCRIPTION.

THE INFORMATION CONTAINED IN THIS DRAWING IS THE SOLE PROPERTY OF INFINITE ELECTRONICS, INC. ANY REPRODUCTION IN PART OR WHOLE WITHOUT THE WRITTEN PERMISSION OF INFINITE ELECTRONICS, INC. IS PROHIBITED. THESE COMMODITIES, TECHNOLOGY OR SERVICES ARE EXPORTED FROM THE UNITED STATES IN ACCORDANCE WITH THE EXPORT ADMINISTRATION REGULATIONS. DIVERSION CONTRARY TO U.S. LAW PROHIBITED.

PE DS Rev-D4 Add2

REVISION		DATE	CHANGED BY	APPROVED
ZONE	REV			
	A	07/10/2025	KGLEBOVA	NOTTINGHAM
DESCRIPTION				
INITIAL RELEASE				

PE PASTERNAK
an INFINITI® brand

Website: www.Pasternack.com
Phone: 1.866.727.8376 | 1.949.261.1920

INTERPRET ALL DIMENSIONS AND TOLERANCES PER ASME Y14.5

SCALE: NONE
SHEET: 1 OF 1

UNLESS OTHERWISE SPECIFIED, LEADING DIMENSIONS ARE IN INCHES. DIMENSIONS IN [] ARE IN MILLIMETERS.

TOLERANCES:
 .X = ±.2 [5]
 .XX = ±.02 [0.5]
 .XXX = ±.005 [0.13]
 FRACTIONS: ± 1/32
 ANGLES: ± 1°

CABLE LENGTH TOLERANCES:
 <12 [305] ≤ 60 [1524] = ±.1 [25] / -0
 >60 [1524] ≤ 120 [3048] = ±.4 [102] / -0
 >120 [3048] ≤ 300 [7620] = ±.6 [152] / -0
 >300 [7620] = ±.8 [203] / -0

ALL DIMENSIONS ARE FOR REFERENCE ONLY. UNLESS OTHERWISE SPECIFIED, DIMENSIONS ARE UNDIMENSIONED/NON-CRITICAL FEATURES. COLORS MAY VARY.

DESCRIPTION: FIBER OPTIC PATCH CABLE, SIMPLEX FC UPC, NK TO SC UPC, SM OS2, 2.0mm LSZH, YELLOW

SIZE	A	CAGE CODE	53919	DRAWN BY	KGLEBOVA	ITEM NO.	PE3FCA500
REV	A						