

Fiber Optic Patch Cable, Duplex FC UPC, NK to SC UPC, SM OS2, 2.0mm Plenum, Yellow-3M



PE3FCA517-3M

DATASHEETS SENT FOR REVIEW Fiber Optic Patch Cable, Duplex FC UPC, NK to SC UPC, SM OS2, 2.0mm Plenum, Yellow-3M from Pasternack Enterprises has same day shipment for domestic and International orders. Our RF, microwave and millimeter wave products maintain a 99.4% availability and are part of the broadest selection in the industry.

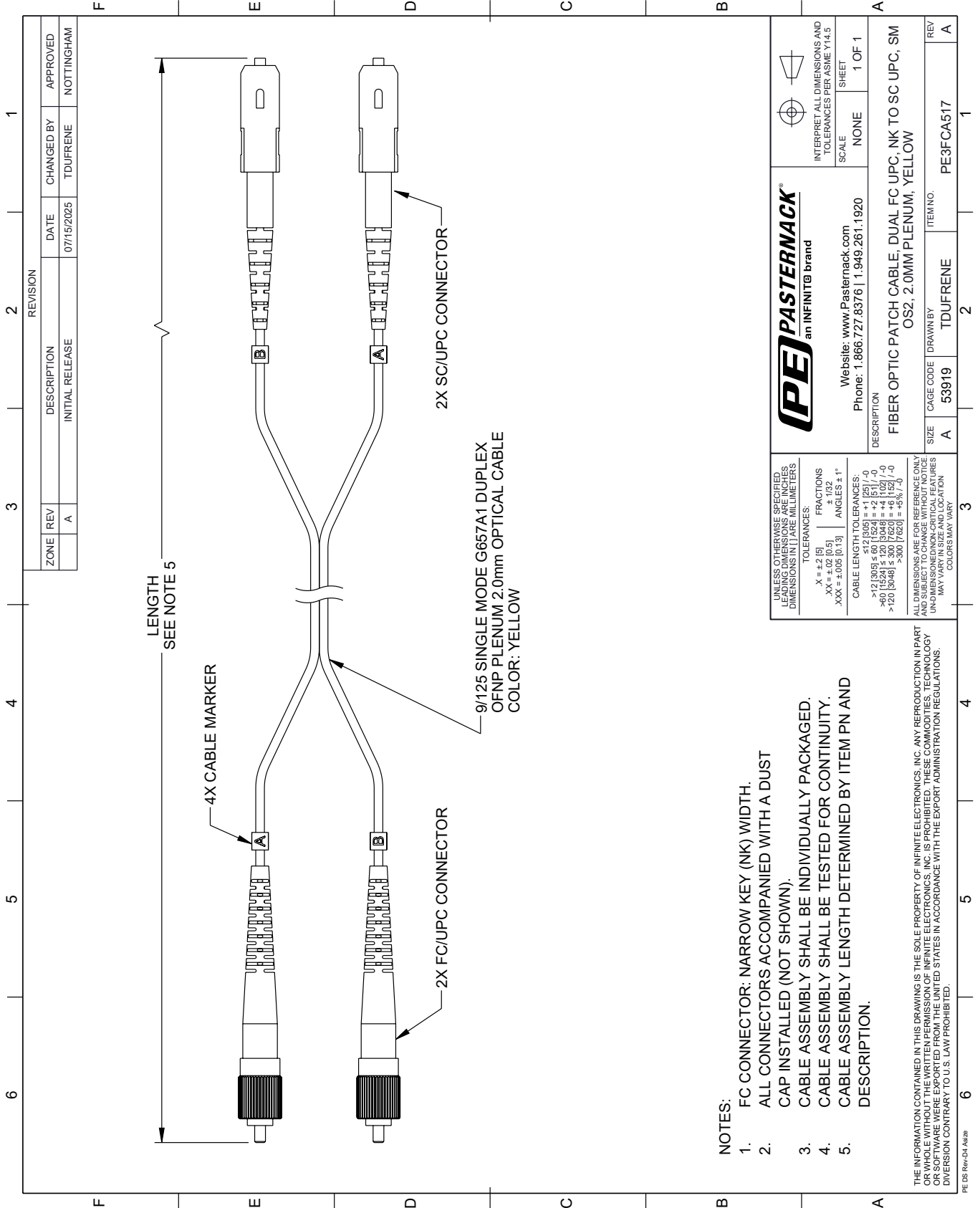
Click the following link (or enter part number in "SEARCH" on website) to obtain additional part information including price, inventory and certifications: [Fiber Optic Patch Cable, Duplex FC UPC, NK to SC UPC, SM OS2, 2.0mm Plenum, Yellow-3M PE3FCA517-3M](https://www.pasternack.com/fc-sc-single-mode-9-125-sm-duplex-plenum-fiber-patch-cable-fiber-optic-cable-assembly-pe3fca517-3m-p.aspx)

URL: <https://www.pasternack.com/fc-sc-single-mode-9-125-sm-duplex-plenum-fiber-patch-cable-fiber-optic-cable-assembly-pe3fca517-3m-p.aspx>

The information contained within this document is accurate to the best of our knowledge and representative of the part described herein. It may be necessary to make modifications to the part and/or the documentation of the part in order to implement improvements. Pasternack Enterprises reserves the right to make such changes as required. Unless otherwise stated, all specifications are nominal. Pasternack Enterprises does not make any representation or warranty regarding the suitability of the part described herein for any particular purpose, and Pasternack Enterprises does not assume liability arising out of the use of any part or document.

PE3FCA517-3M CAD Drawing

Fiber Optic Patch Cable, Duplex FC UPC, NK to SC UPC, SM OS2, 2.0mm Plenum, Yellow-3M



REVISION		DATE	CHANGED BY	APPROVED
ZONE	REV	DESCRIPTION	TDUFRENE	NOTTINGHAM
	A	INITIAL RELEASE		

PE PASTERNAK
an INFINITE brand

Website: www.Pasternack.com
Phone: 1.866.727.8376 | 1.949.261.1920

INTERPRET ALL DIMENSIONS AND TOLERANCES PER ASME Y14.5

SCALE: NONE
SHEET: 1 OF 1

UNLESS OTHERWISE SPECIFIED, ALL DIMENSIONS ARE IN INCHES. DIMENSIONS IN [] ARE MILLIMETERS.

TOLERANCES:
 .X = ±.2 (5)
 .XX = ±.02 (0.5)
 .XXX = ±.005 (0.13)
 FRACTIONS: ± 1/32
 ANGLES: ± 1°

CABLE LENGTH TOLERANCES:
 >12 (305) ≤ 60 (1524) = ±.125 (1/8) / -0
 >60 (1524) ≤ 120 (3048) = ±.125 (1/8) / -0
 >120 (3048) ≤ 300 (7620) = ±.25 (1/4) / -0

ALL DIMENSIONS ARE FOR REFERENCE ONLY. UNLESS OTHERWISE SPECIFIED, ALL DIMENSIONS ARE NON-CRITICAL FEATURES. DIMENSIONS MAY VARY.

DESCRIPTION: FIBER OPTIC PATCH CABLE, DUAL FC UPC, NK TO SC UPC, SM OS2, 2.0MM PLENUM, YELLOW

SIZE	A	CAGE CODE	53919	DRAWN BY	TDUFRENE	ITEM NO.	PE3FCA517
REV	A						

- NOTES:
1. FC CONNECTOR: NARROW KEY (NK) WIDTH.
 2. ALL CONNECTORS ACCOMPANIED WITH A DUST CAP INSTALLED (NOT SHOWN).
 3. CABLE ASSEMBLY SHALL BE INDIVIDUALLY PACKAGED.
 4. CABLE ASSEMBLY SHALL BE TESTED FOR CONTINUITY.
 5. CABLE ASSEMBLY LENGTH DETERMINED BY ITEM PN AND DESCRIPTION.

THE INFORMATION CONTAINED IN THIS DRAWING IS THE SOLE PROPERTY OF INFINITE ELECTRONICS, INC. ANY REPRODUCTION IN PART OR WHOLE WITHOUT THE WRITTEN PERMISSION OF INFINITE ELECTRONICS, INC. IS PROHIBITED. THESE COMMODITIES, TECHNOLOGY OR SERVICES WERE EXPORTED FROM THE UNITED STATES IN ACCORDANCE WITH THE EXPORT ADMINISTRATION REGULATIONS. DIVERSION CONTRARY TO U.S. LAW PROHIBITED.

PE DS Rev-D4 Add2