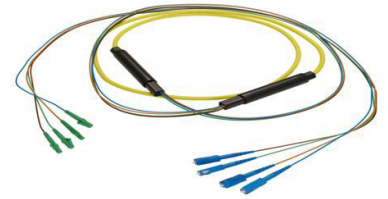


## 4-Fiber LC APC to SC UPC, OS2 Single Mode Indoor Distribution Cable, 4.5mm Riser, 2.0mm breakout, Yellow-30M



### PE3FCA545-30M

#### Features

- 4X LC APC to 4X SC UPC
- Indoor single mode OS2
- Riser (OFNR) rated cable
- 4.5mm with tight-buffer and aramid yarn strength member
- 2mm TIA 598 color coded, .5M breakout
- Suitable for ceilings and riser areas

#### Applications

- Data centers
- Passive Optical Networks (PON)
- Local Area Networks (LAN)
- Enterprise Networking
- Storage and cloud based services
- AI data storage and communications
- Headend termination to a fiber backbone
- Terminations of data center fiber rack system

#### Description

High-performance fiber optic cable assemblies, including the PE3FCA545-30M from Pasternack, are designed for modern, high-speed network infrastructures and part of a large selection of same day ship cable assemblies. Whether deploying fiber optic distribution assemblies for enterprise networks, fiber optic breakout assemblies for seamless interconnectivity, or fiber optic patch cord assemblies for structured cabling, our solutions ensure durability and precision. Built for data centers, telecommunications, and industrial applications, our fiber optic distribution breakout assemblies deliver superior performance, ensuring optimal signal integrity and minimal loss.

For long-distance and high-speed transmission, the Pasternack PE3FCA545-30M indoor Single Mode G.657.A1 OS2 fiber optic cable assembly offers ultra-low attenuation over distances up to 10km for 10G Ethernet and beyond. Built with a 9/125µm core size, this LC APC to SC UPC fiber optic distribution assembly ensures minimal signal loss for campus networks, metro Ethernet, and telecom infrastructure. The yellow Riser (OFNR) rated jacket, tight-buffered aramid yarn construction, and 45mm (10D) minimum bend radius provide maximum durability and performance.

With an operating temperature range of -20°C to 70°C, Pasternack's PE3FCA545-30M OS2 fiber optic cable is designed for indoor environments, supporting ceilings and riser areas. The 4.5mm overall cable diameter and 2.0mm breakout diameter allow for flexible routing while maintaining low insertion loss and superior signal integrity. Whether for enterprise backbones, long-haul networking, or high-speed data transmission, this OS2 fiber optic assembly delivers exceptional reliability for critical infrastructure deployments. For further information on similar products, our expert technical support and trained sales team can get you the ideal fiber optic multi-fiber cable assembly as per your requirements.

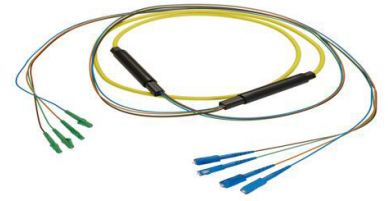
#### Configuration

Function	Breakout
Cable Type	4-Fiber Single Mode
Mode	Single Mode
Mode Class	OS2
Fiber Diameter	9/125 um
Connection 1 Type	LC
Connection 1 Polish	APC
Connection 2 Type	SC
Connection 2 Polish	UPC
Cable Color	Yellow

#### Optical Specifications

Description	Minimum	Typical	Maximum	Units
Return Loss	50			dB

4-Fiber LC APC to SC UPC, OS2 Single Mode Indoor  
Distribution Cable, 4.5mm Riser, 2.0mm breakout, Yellow-30M



**PE3FCA545-30M**

**Optical Specifications**

Description	Minimum	Typical	Maximum	Units
Insertion Loss			0.3	dB

**Mechanical Specifications**

**Cable Assembly**

Length	30 m [1181.10 in]
Width/Diameter	4.5 mm
Weight	161.48 g [0.356 lbs]

**Cable**

Cable Type	Breakout
Static Bend Radius	34 mm
Dynamic Bend Radius	67 mm
Max Crush Resistance, Short Term (N/100mm)	1,000
Max Crush Resistance, Long Term (N/100mm)	300

**Connectors**

Description	Connector 1	Connector 2
Type	LC	SC
Connector Polish	APC	UPC

**Environmental Specifications**

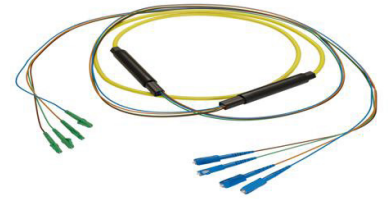
Operating Range Temperature	-20 to +70 deg C
Storage Range Temperature	-40 to +70 deg C
Ingress Protection (IP) Rating	Non-Rated

**Compliance Certifications** (see [product page](#) for current document)

**Plotted and Other Data**

Notes:

4-Fiber LC APC to SC UPC, OS2 Single Mode Indoor Distribution Cable, 4.5mm Riser, 2.0mm breakout, Yellow-30M



**PE3FCA545-30M**

**Typical Performance Data**

**How to Order**

Part Number Configuration:

**PE3FCA545**

**- xx**

**uu**

Unit of Measure:

M = Meters

<blank> = Inches

Length

Base Number

Example: PE3FCA545-12 = 12 inches long cable  
PE3FCA545-100cm = 100 cm long cable

4-Fiber LC APC to SC UPC, OS2 Single Mode Indoor Distribution Cable, 4.5mm Riser, 2.0mm breakout, Yellow-30M from Pasternack Enterprises has same day shipment for domestic and International orders. Our RF, microwave and millimeter wave products maintain a 99.4% availability and are part of the broadest selection in the industry.

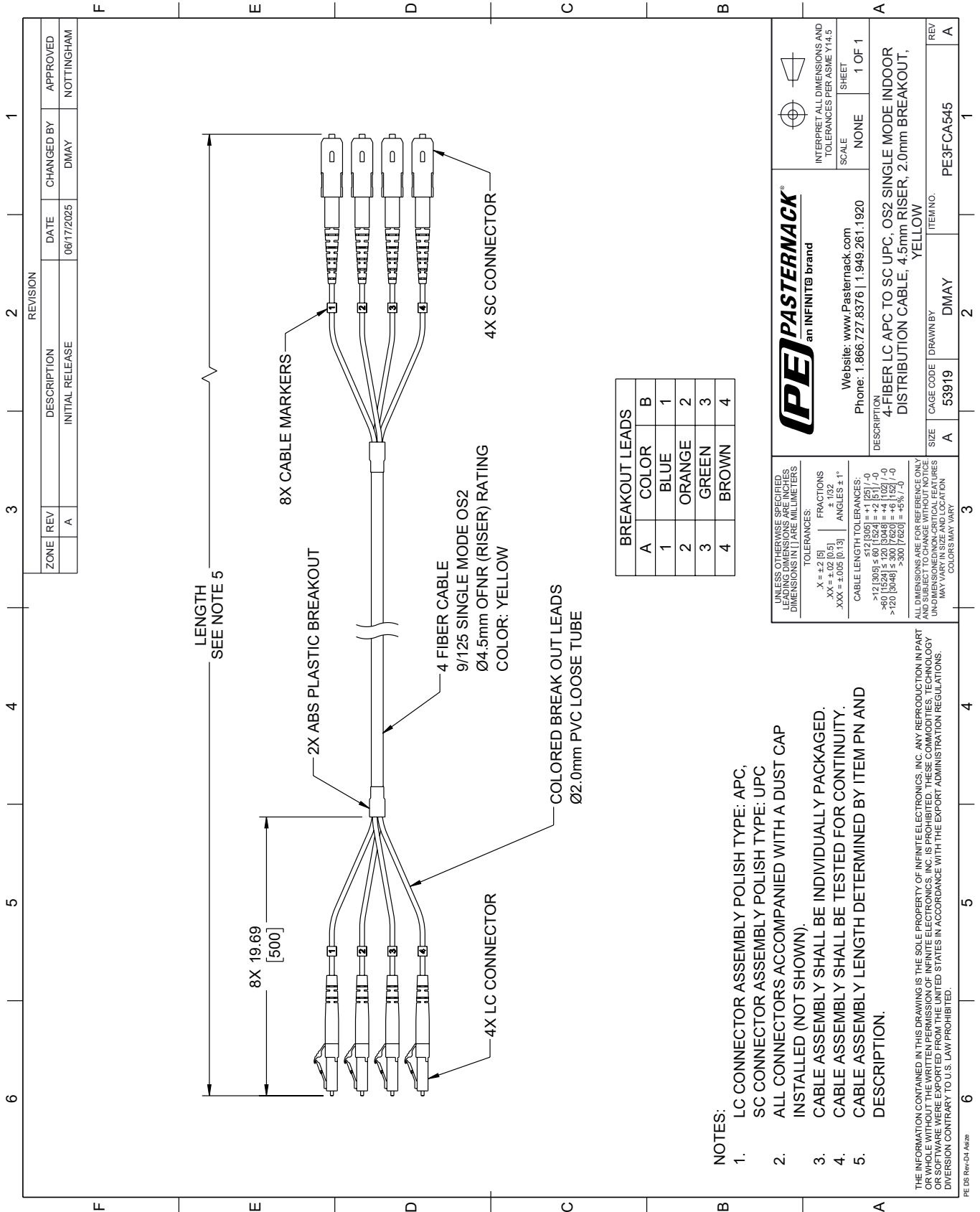
Click the following link (or enter part number in "SEARCH" on website) to obtain additional part information including price, inventory and certifications: [4-Fiber LC APC to SC UPC, OS2 Single Mode Indoor Distribution Cable, 4.5mm Riser, 2.0mm breakout, Yellow-30M PE3FCA545-30M](#)

URL: <https://www.pasternack.com/lc-sc-single-mode-9-125-sm-4.5mm-db-cable-2.0mm-bo-0.5m-riser-fiber-optic-cable-assembly-pe3fca545-30m-p.aspx>

The information contained within this document is accurate to the best of our knowledge and representative of the part described herein. It may be necessary to make modifications to the part and/or the documentation of the part in order to impliment improvements. Pasternack Enterprises reserves the right to make such changes as required. Unless otherwise stated, all specifications are nominal. Pasternack Enterprises does not make any representation or warranty regarding the suitability of the part described herein for any particular purpose, and Pasternack Enterprises does not assume liability arising out of the use of any part or document.

# PE3FCA545-30M CAD Drawing

4-Fiber LC APC to SC UPC, OS2 Single Mode Indoor Distribution Cable, 4.5mm Riser, 2.0mm breakout, Yellow-30M



BREAKOUT LEADS	
A	B
1	BLUE
2	ORANGE
3	GREEN
4	BROWN

- NOTES:**
- LC CONNECTOR ASSEMBLY POLISH TYPE: APC, SC CONNECTOR ASSEMBLY POLISH TYPE: UPC
  - ALL CONNECTORS ACCOMPANIED WITH A DUST CAP INSTALLED (NOT SHOWN).
  - CABLE ASSEMBLY SHALL BE INDIVIDUALLY PACKAGED.
  - CABLE ASSEMBLY SHALL BE TESTED FOR CONTINUITY.
  - CABLE ASSEMBLY LENGTH DETERMINED BY ITEM PN AND DESCRIPTION.

**PE PASTERNAK®**  
an INFINITE® brand

Website: [www.Pasternack.com](http://www.Pasternack.com)  
Phone: 1.866.727.8376 | 1.949.261.1920

INTERPRET ALL DIMENSIONS AND TOLERANCES PER ASME Y14.5  
SCALE: NONE  
SHEET: 1 OF 1

UNLESS OTHERWISE SPECIFIED, LEADING DIMENSIONS ARE IN INCHES. DIMENSIONS IN [ ] ARE MILLIMETERS.  
TOLERANCES:  
X = ±.2 [5] FRACTIONS ±.132  
XX = ±.02 [0.5] ±.132  
XXX = ±.005 [0.13] ANGLES ± 1°  
CABLE LENGTH TOLERANCES:  
≤ 12 [305] ±.60 [1524] = ±.2 [51] / -0  
> 12 [305] ≤ 60 [1524] = ±.4 [102] / -0  
> 60 [1524] ≤ 120 [3048] = ±.4 [102] / -0  
> 120 [3048] ≤ 300 [7620] = ±.6 [152] / -0  
ALL DIMENSIONS ARE FOR REFERENCE ONLY. DIMENSIONS OF CRITICAL FEATURES MAY VARY IN SIZE AND LOCATION. COLORS MAY VARY.

DESCRIPTION	SIZE	CAGE CODE	DRAWN BY	ITEM NO.	REV
4-FIBER LC APC TO SC UPC, OS2 SINGLE MODE INDOOR DISTRIBUTION CABLE, 4.5mm RISER, 2.0mm BREAKOUT, YELLOW	A	53919	DMAY	PE3FCA545	A

THE INFORMATION CONTAINED IN THIS DRAWING IS THE SOLE PROPERTY OF INFINITE ELECTRONICS, INC. ANY REPRODUCTION IN PART OR WHOLE WITHOUT THE WRITTEN PERMISSION OF INFINITE ELECTRONICS, INC. IS PROHIBITED. THESE COMMODITIES, TECHNOLOGY OR SOFTWARE ARE EXPORTED FROM THE UNITED STATES IN ACCORDANCE WITH THE EXPORT ADMINISTRATION REGULATIONS. DIVERSION CONTRARY TO U.S. LAW PROHIBITED.

PE DS Rev-04 Add