



SMA Male to SMA Male Cable Using Tinned RG402 Coax

TECHNICAL DATA SHEET

PE3W00136

Configuration

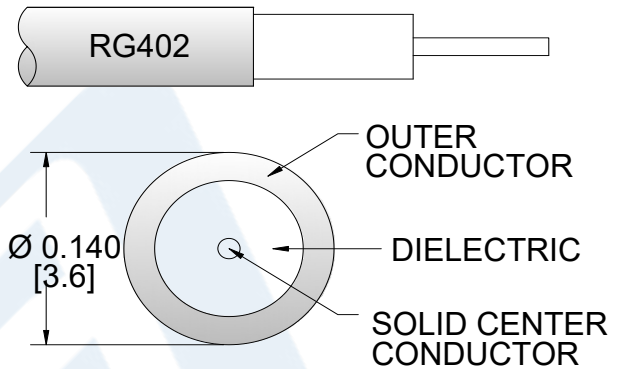
- Connector 1: SMA Male
- Connector 2: SMA Male
- Cable Type: RG402 Tinned
- Coax Flex Type: Semi-Rigid

Features

- Max Frequency 18 GHz

Applications

- General Purpose
- Laboratory Use



Description

Pasternack's PE3W00136 SMA male to SMA male cable using tinned RG402 coax is part of our full line of RF components available for same-day shipping. Pasternack's semi-rigid RF cable assemblies are ideal for high performance applications and can be formed, using proper tooling, to the routing pattern required. This Pasternack SMA to SMA cable assembly has a male to male gender configuration with 50 ohm semi-rigid RG402 tinned coax. The PE3W00136 SMA male to SMA male cable assembly operates to 18 GHz.

Custom versions of most RF cable assemblies can be built and shipped same day. Custom cable assembly lengths can be obtained by specifying the desired length on the web site at time of order or by contacting a sales representative. Other available RF cable assembly value added services include connector orientation or clocking, heat shrink booting and custom labeling. RF testing can also be performed to document the electrical performance of your cable assembly.

Click the following link (or enter part number in "SEARCH" on website) to obtain additional part information including price, inventory and certifications: [SMA Male to SMA Male Cable Using Tinned RG402 Coax PE3W00136](#)



SMA Male to SMA Male Cable Using Tinned RG402 Coax

TECHNICAL DATA SHEET

PE3W00136

Electrical Specifications

Description	Minimum	Typical	Maximum	Units
Frequency Range	DC		18	GHz

Specifications by Frequency

Part Number	Length	Description	F1	F2	F3	F4	F5	Units	Weight (lbs)
		Frequency	1000	2000	4500	9000	#####	MHz	
PE3W00136	Custom Lengths Available	Insertion Loss (Typ.)	0.12	0.15	0.24	0.41	0.65	dB/ft	
			0.4	0.5	0.79	1.35	2.14	dB/m	
PE3W00136-6	6 inch	Insertion Loss (Typ.)	0.26	0.28	0.32	0.41	0.53	dB	0.026
PE3W00136-12	12 inch	Insertion Loss (Typ.)	0.32	0.35	0.44	0.61	0.85	dB	0.041
PE3W00136-18	18 inch	Insertion Loss (Typ.)	0.38	0.43	0.56	0.82	1.18	dB	0.057
PE3W00136-24	24 inch	Insertion Loss (Typ.)	0.44	0.5	0.68	1.02	1.5	dB	0.073
PE3W00136-36	36 inch	Insertion Loss (Typ.)	0.56	0.65	0.92	1.43	2.15	dB	0.104

The insertion loss data for the base model does not include loss due to the connectors. Each length includes insertion loss due to the connectors.

Loss due to Connector 1:	0.1 dB
Loss due to Connector 2:	0.1 dB
Base Weight:	0.041 pounds
Additional Weight per Inch:	0.00259 pounds

Electrical Specification Notes:

Insertion Loss does not include the loss of the connectors. Insertion Loss is estimated as 0.1 dB per connector.

Mechanical Specifications

Cable Assembly

Weight 0.041 lbs [18.6 g]

Cable

Cable Type	RG402 Tinned
Impedance	50 Ohms
Inner Conductor Type	Solid
Inner Conductor Material and Plating	Copper Clad Steel, Silver
Dielectric Type	PTFE
Number of Shields	1
Shield Layer 1	Tinned Copper

One Time Minimum Bend Radius 1 in [25.4 mm]

Click the following link (or enter part number in "SEARCH" on website) to obtain additional part information including price, inventory and certifications: [SMA Male to SMA Male Cable Using Tinned RG402 Coax PE3W00136](#)



SMA Male to SMA Male Cable Using Tinned RG402 Coax

TECHNICAL DATA SHEET

PE3W00136

Connectors

Description	Connector 1	Connector 2
Type	SMA Male Threaded	SMA Male Threaded
Impedance	50 Ohms	50 Ohms
Body Material and Plating	Brass, Gold	Brass, Gold
Coupling Nut Material and Plating	Passivated Stainless Steel	Passivated Stainless Steel
Hex Size	5/16 in.	5/16 in.
Torque	8 in-lbs [0.9 Nm]	8 in-lbs [0.9 Nm]

Compliance Certifications (see [product page](#) for current document)

Plotted and Other Data

Notes:

How to Order

Part Number Configuration:

PE3W00136

- **xx**

uu

Unit of Measure:
cm = Centimeters
<blank> = Inches
Length
Base Number

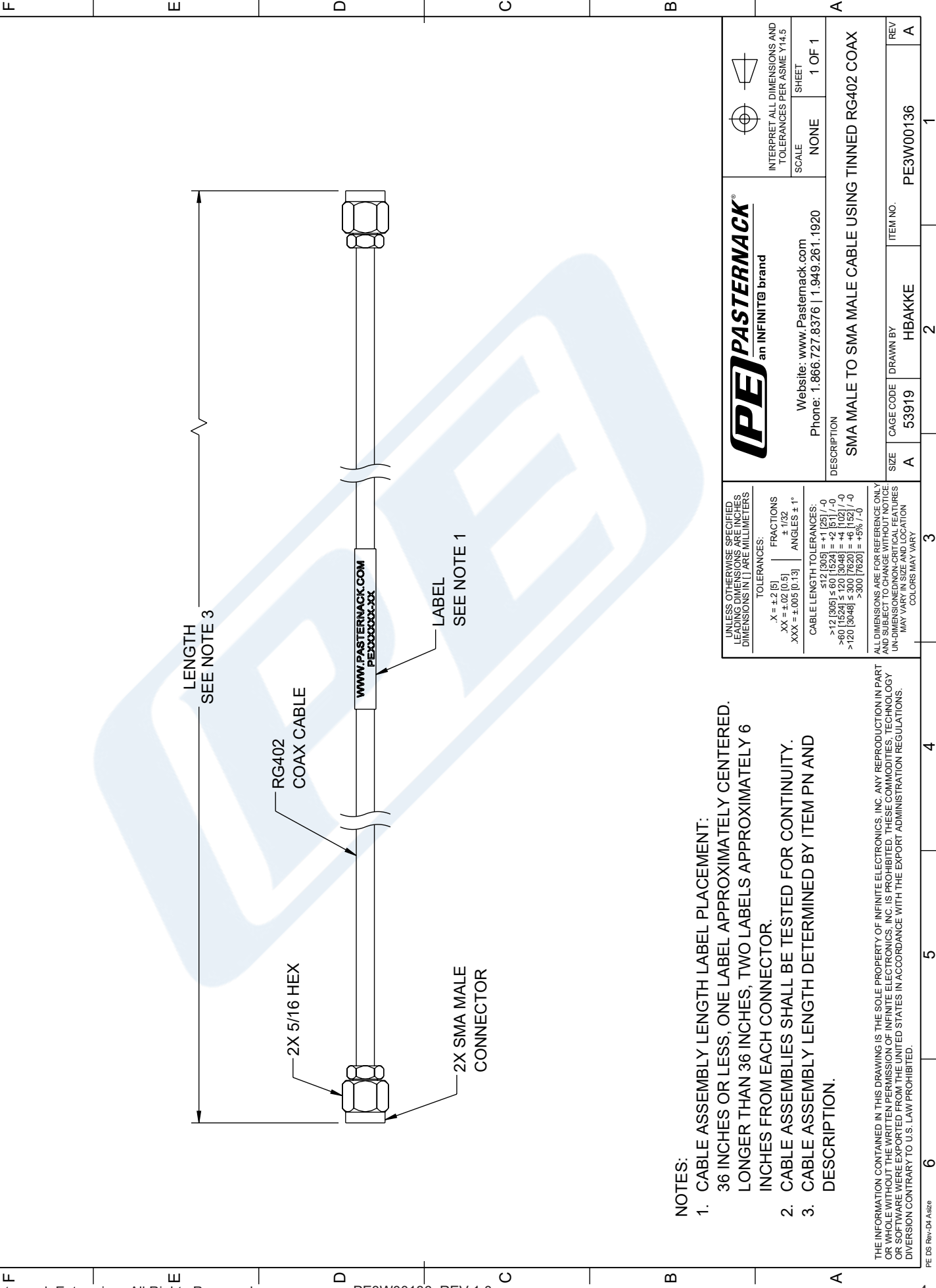
Example: PE3W00136-12 = 12 inches long cable
PE3W00136-100cm = 100 cm long cable

SMA Male to SMA Male Cable Using Tinned RG402 Coax from Pasternack Enterprises has same day shipment for domestic and International orders. Our RF, microwave and millimeter wave products maintain a 99.4% availability and are part of the broadest selection in the industry.

Click the following link (or enter part number in "SEARCH" on website) to obtain additional part information including price, inventory and certifications: [SMA Male to SMA Male Cable Using Tinned RG402 Coax PE3W00136](#)

URL: <https://www.pasternack.com/sma-male-to-sma-male-cable-using-tinned-rg402-pe3w00136-p.aspx>

The information contained in this document is accurate to the best of our knowledge and representative of the part described herein. It may be necessary to make modifications to the part and/or the documentation of the part, in order to implement improvements. Pasternack reserves the right to make such changes as required. Unless otherwise stated, all specifications are nominal. Pasternack does not make any representation or warranty regarding the suitability of the part described herein for any particular purpose, and Pasternack does not assume any liability arising out of the use of any part or documentation.



NOTES:

1. CABLE ASSEMBLY LENGTH LABEL PLACEMENT:
36 INCHES OR LESS, ONE LABEL APPROXIMATELY CENTERED.
LONGER THAN 36 INCHES, TWO LABELS APPROXIMATELY 6 INCHES FROM EACH CONNECTOR.
2. CABLE ASSEMBLIES SHALL BE TESTED FOR CONTINUITY.
3. CABLE ASSEMBLY LENGTH DETERMINED BY ITEM PN AND DESCRIPTION.

THE INFORMATION CONTAINED IN THIS DRAWING IS THE SOLE PROPERTY OF INFINITE ELECTRONICS, INC. ANY REPRODUCTION IN PART OR WHOLE WITHOUT THE WRITTEN PERMISSION OF INFINITE ELECTRONICS, INC. IS PROHIBITED. THESE COMMODITIES, TECHNOLOGY OR SOFTWARE WERE EXPORTED FROM THE UNITED STATES IN ACCORDANCE WITH THE EXPORT ADMINISTRATION REGULATIONS. DIVERSION CONTRARY TO U.S. LAW PROHIBITED.

ZONE	REV	DESCRIPTION	DATE	CHANGED BY	APPROVED
	A	INITIAL RELEASE	10/17/2023	HBAKKE	AGANWANI



PASTERNAK
an INFINITI® brand

Website: www.Pasternack.com
Phone: 1.866.727.8376 | 1.949.261.1920

INTERPRET ALL DIMENSIONS AND TOLERANCES PER ASME Y14.5

SCALE: NONE
SHEET: 1 OF 1

UNLESS OTHERWISE SPECIFIED, LEADING DIMENSIONS ARE IN INCHES, DIMENSIONS IN [] ARE MILLIMETERS.	TOLERANCES: X = ±.2 [5] XX = ±.02 [0.5] XXX = ±.005 [0.13]	FRACTIONS ± 1/32 ANGLES ± 1°
CABLE LENGTH TOLERANCES: ≤ 12 [305] = ±.125 [3.175] >12 [305] ≤ 30 [762] = ±.25 [6.35] >30 [762] ≤ 120 [3048] = ±.5 [12.7] >120 [3048] ≤ 300 [7620] = ±1 [25.4] >300 [7620] = ±5% [-0]		

DESCRIPTION SMA MALE TO SMA MALE CABLE USING TINNED RG402 COAX	SIZE A	CAGE CODE 53919	DRAWN BY HBAKKE	ITEM NO. PE3W00136	REV A
---	-----------	--------------------	--------------------	-----------------------	----------