

## N Male to N Male Cable Using RG223 Coax, LF Solder



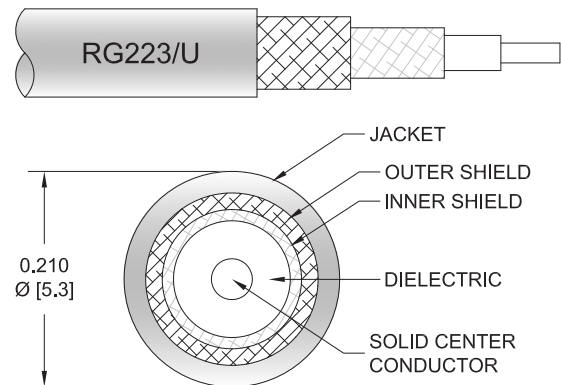
### PE3W00417LF

#### Configuration

- Connector 1: N Male
- Connector 2: N Male
- Cable Type: RG223
- Coax Flex Type: Flexible

#### Features

- Max Frequency 11 GHz
- 66% Phase Velocity
- Double Shielded
- PVC Jacket



#### Applications

- General Purpose
- Laboratory Use

#### Description

Pasternack's PE3W00417LF type N male to type N male cable using RG223 coax is part of our full line of RF components available for same-day shipping. Pasternack's flexible RF cable assemblies are ideal for applications where tight bends and flexure are required. This Pasternack type N to type N cable assembly has a male to male gender configuration with 50 ohm flexible RG223 coax. The PE3W00417LF type N male to type N male cable assembly operates to 11 GHz. The double shielding of this Pasternack cable assembly provides excellent shielding effectiveness.

Custom versions of most RF cable assemblies can be built and shipped same day. Custom cable assembly lengths can be obtained by specifying the desired length on the web site at time of order or by contacting a sales representative. Other available RF cable assembly value added services include connector orientation or clocking, heat shrink booting and custom labeling. RF testing can also be performed to document the electrical performance of your cable assembly.

#### Electrical Specifications

Description	Minimum	Typical	Maximum	Units
Frequency Range	DC		11	GHz
VSWR			1.4:1	
Velocity of Propagation		66		%
Capacitance		30.8 [101.05]		pF/ft [pF/m]
Operating Voltage (AC)			1,500	Vrms

#### Specifications by Frequency

## N Male to N Male Cable Using RG223 Coax, LF Solder



### PE3W00417LF

Part Number	Length	Description	F1	F2	F3	F4	F5	Units	Weight (lbs)
		Frequency	500	1000	2500	5000	11000	MHz	
PE3W00417LF	Custom Lengths Available	Insertion Loss (Typ.)	0.09	0.13	0.21	0.33	0.54	dB/ft	
			0.3	0.43	0.69	1.09	1.78	dB/m	
PE3W00417LF-12	12 inch	Insertion Loss (Typ.)	0.29	0.33	0.41	0.53	0.74	dB	0.167
PE3W00417LF-24	24 inch	Insertion Loss (Typ.)	0.38	0.46	0.62	0.86	1.28	dB	0.199
PE3W00417LF-36	36 inch	Insertion Loss (Typ.)	0.47	0.59	0.83	1.19	1.82	dB	0.23
PE3W00417LF-60	60 inch	Insertion Loss (Typ.)	0.65	0.85	1.25	1.85	2.9	dB	0.292
PE3W00417LF-72	72 inch	Insertion Loss (Typ.)	0.74	0.98	1.46	2.18	3.44	dB	0.323

The insertion loss data for the base model does not include loss due to the connectors. Each length includes insertion loss due to the connectors.

Loss due to Connector 1: 0.1 dB  
 Loss due to Connector 2: 0.1 dB  
 Base Weight: 0.167 pounds  
 Additional Weight per Inch: 0.00259 pounds

## Mechanical Specifications

### Cable Assembly

Weight 0.167 lbs [75.75 g]

### Cable

Cable Type RG223  
 Impedance 50 Ohms  
 Inner Conductor Type Solid  
 Inner Conductor Material and Plating Copper, Silver  
 Dielectric Type PE  
 Number of Shields 2  
 Shield Layer 1 Silver Plated Copper Braid  
 Shield Layer 2 Silver Plated Copper Braid  
 Jacket Material PVC, Black  
 Jacket Diameter 0.21 in [5.33 mm]  
 One Time Minimum Bend Radius 0.21 in [5.33 mm]  
 Repeated Minimum Bend Radius 1 in [25.4 mm]

## N Male to N Male Cable Using RG223 Coax, LF Solder



**PE3W00417LF**

### Connectors

Description	Connector 1	Connector 2
Type	N Male	N Male
Specification	MIL-STD-348A	MIL-STD-348A
Impedance	50 Ohms	50 Ohms
Configuration	Straight	Straight
Contact Material and Plating	Brass, Gold	Brass, Gold
Contact Plating Specification	30 µin	30 µin
Dielectric Type	PTFE	PTFE
Body Material and Plating	Brass, Tri-Metal	Brass, Tri-Metal
Coupling Nut Material and Plating	Brass, Tri-Metal	Brass, Tri-Metal
Hex Size	18 mm	18 mm
Torque	9 in-lbs 1.02 Nm	9 in-lbs 1.02 Nm

### Environmental Specifications

Operating Range Temperature -40 to +80 deg C

**Compliance Certifications** (see [product page](#) for current document)

### Plotted and Other Data

Notes:

## N Male to N Male Cable Using RG223 Coax, LF Solder



### PE3W00417LF

#### Typical Performance Data

#### How to Order

Part Number Configuration: **PE3W00417LF** - **xx** **uu**

Unit of Measure:  
cm = Centimeters  
<blank> = Inches

Length

Base Number

Example: PE3W00417LF-12 = 12 inches long cable  
PE3W00417LF-100cm = 100 cm long cable

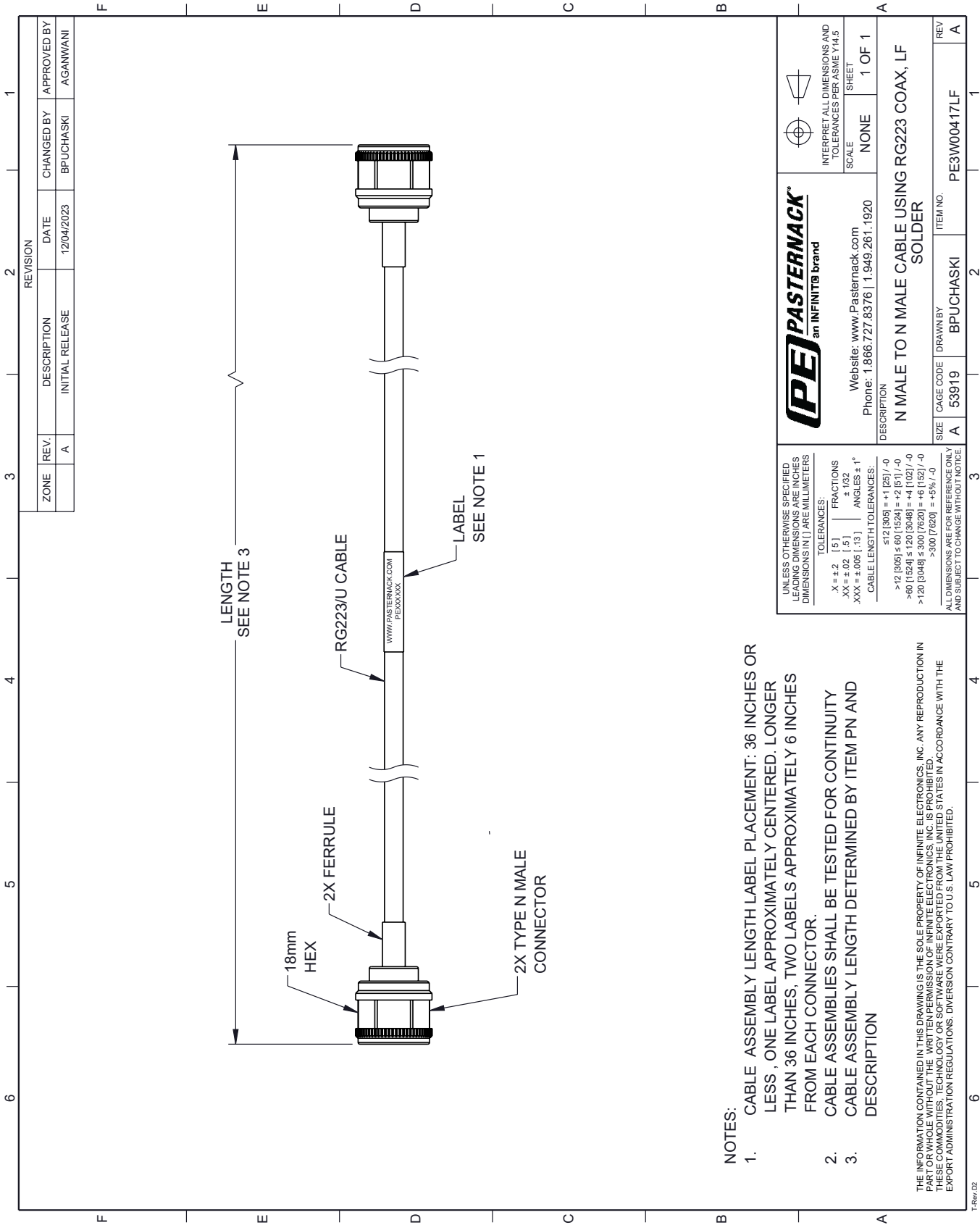
N Male to N Male Cable Using RG223 Coax, LF Solder from Pasternack Enterprises has same day shipment for domestic and International orders. Our RF, microwave and millimeter wave products maintain a 99.4% availability and are part of the broadest selection in the industry.

Click the following link (or enter part number in "SEARCH" on website) to obtain additional part information including price, inventory and certifications: [N Male to N Male Cable Using RG223 Coax, LF Solder PE3W00417LF](https://www.pasternack.com/n-male-to-n-male-cable-using-rg223-lf-solder-pe3w00417lf-p.aspx)

URL: <https://www.pasternack.com/n-male-to-n-male-cable-using-rg223-lf-solder-pe3w00417lf-p.aspx>

The information contained within this document is accurate to the best of our knowledge and representative of the part described herein. It may be necessary to make modifications to the part and/or the documentation of the part in order to implement improvements. Pasternack Enterprises reserves the right to make such changes as required. Unless otherwise stated, all specifications are nominal. Pasternack Enterprises does not make any representation or warranty regarding the suitability of the part described herein for any particular purpose, and Pasternack Enterprises does not assume liability arising out of the use of any part or document.

PE3W00417LF CAD Drawing
N Male to N Male Cable Using RG223 Coax, LF Solder



- NOTES:
- 1. CABLE ASSEMBLY LENGTH LABEL PLACEMENT: 36 INCHES OR LESS , ONE LABEL APPROXIMATELY CENTERED. LONGER THAN 36 INCHES, TWO LABELS APPROXIMATELY 6 INCHES FROM EACH CONNECTOR.
  - 2. CABLE ASSEMBLIES SHALL BE TESTED FOR CONTINUITY
  - 3. CABLE ASSEMBLY LENGTH DETERMINED BY ITEM PN AND DESCRIPTION

THE INFORMATION CONTAINED IN THIS DRAWING IS THE SOLE PROPERTY OF INFINITE ELECTRONICS, INC. ANY REPRODUCTION IN PART OR WHOLE WITHOUT THE WRITTEN PERMISSION OF INFINITE ELECTRONICS, INC. IS PROHIBITED. THESE COMMODITIES, TECHNOLOGY OR SOFTWARE WERE EXPORTED FROM THE UNITED STATES IN ACCORDANCE WITH THE EXPORT ADMINISTRATION REGULATIONS. DIVERSION CONTRARY TO U.S. LAW PROHIBITED.

UNLESS OTHERWISE SPECIFIED LEADING DIMENSIONS ARE INCHES DIMENSIONS IN [ ] ARE MILLIMETERS		<b>PE PASTERNAK</b> an INFINITE brand		INTERPRET ALL DIMENSIONS AND TOLERANCES PER ASME Y14.5	
TOLERANCES:		Website: <a href="http://www.Pasternack.com">www.Pasternack.com</a>		SCALE NONE	
X = ±.2 [ 5 ] FRACTIONS ±.132		Phone: 1.866.727.8376   1.949.261.1920		SHEET 1 OF 1	
XX = ±.02 [ .5 ] ANGLES ± 1°		DESCRIPTION		N MALE TO N MALE CABLE USING RG223 COAX, LF SOLDER	
XXX = ±.005 [ .13 ] CABLE LENGTH TOLERANCES:		SIZE A		CAGE CODE 53919	
<12 [305] = ±.1 [25] / -0		DRAWN BY BPUCHASKI		ITEM NO. PE3W00417LF	
>12 [305] < 60 [1524] = ±.2 [51] / -0		REV A		REV A	
>60 [1524] < 120 [3048] = ±.4 [102] / -0		ALL DIMENSIONS ARE FOR REFERENCE ONLY AND SUBJECT TO CHANGE WITHOUT NOTICE			
>120 [3048] < 300 [7620] = ±.6 [152] / -0					
>300 [7620] = ±.9% / -0					